

Figure S1

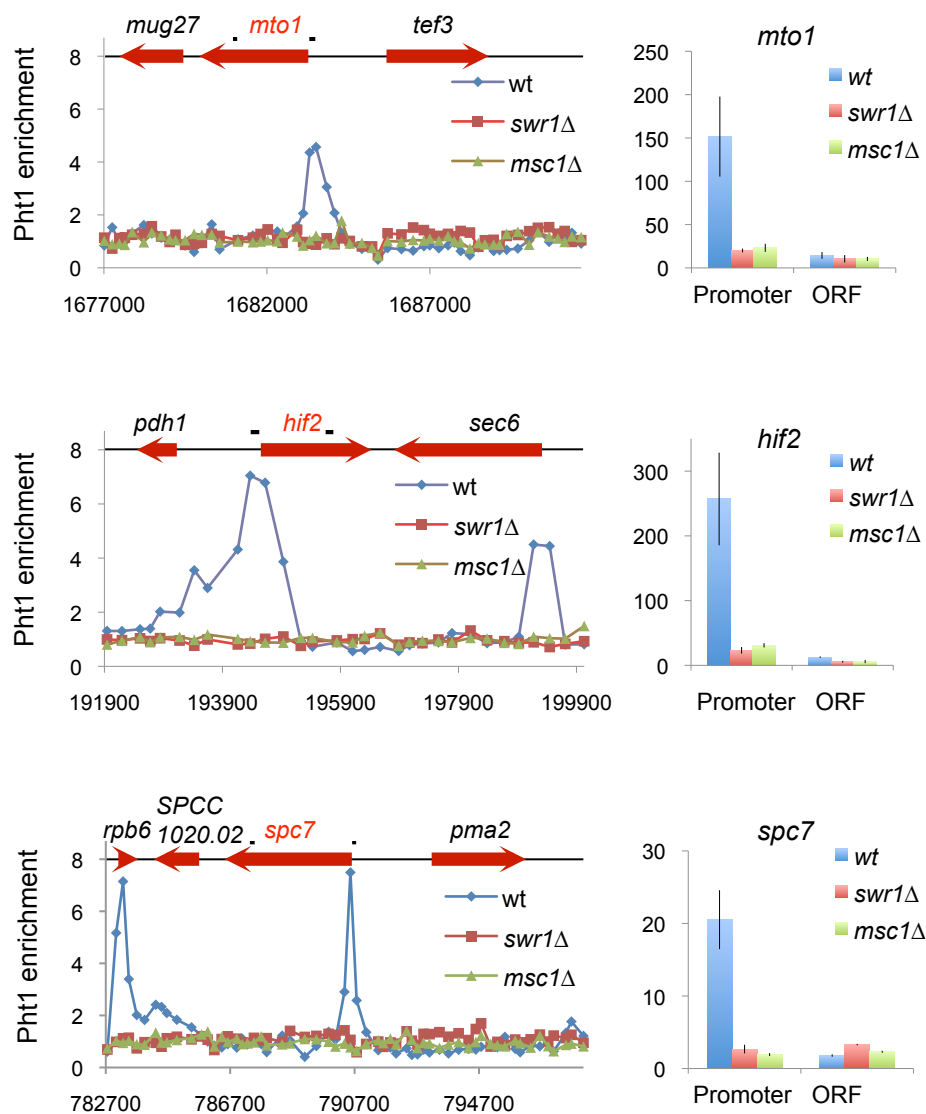


Fig. S1. H2A.Z^{Pht1} is enriched at gene promoters. Left, example of H2A.Z^{Pht1} ChIP-chip analysis across genomic regions that showed high levels of enrichment. Gene coding regions are indicated on top and the positions of PCR fragments used in qPCR based calculation are shown as short bars. Right, quantification of H2A.Z^{Pht1} enrichment at promoter and coding regions by real time PCR.

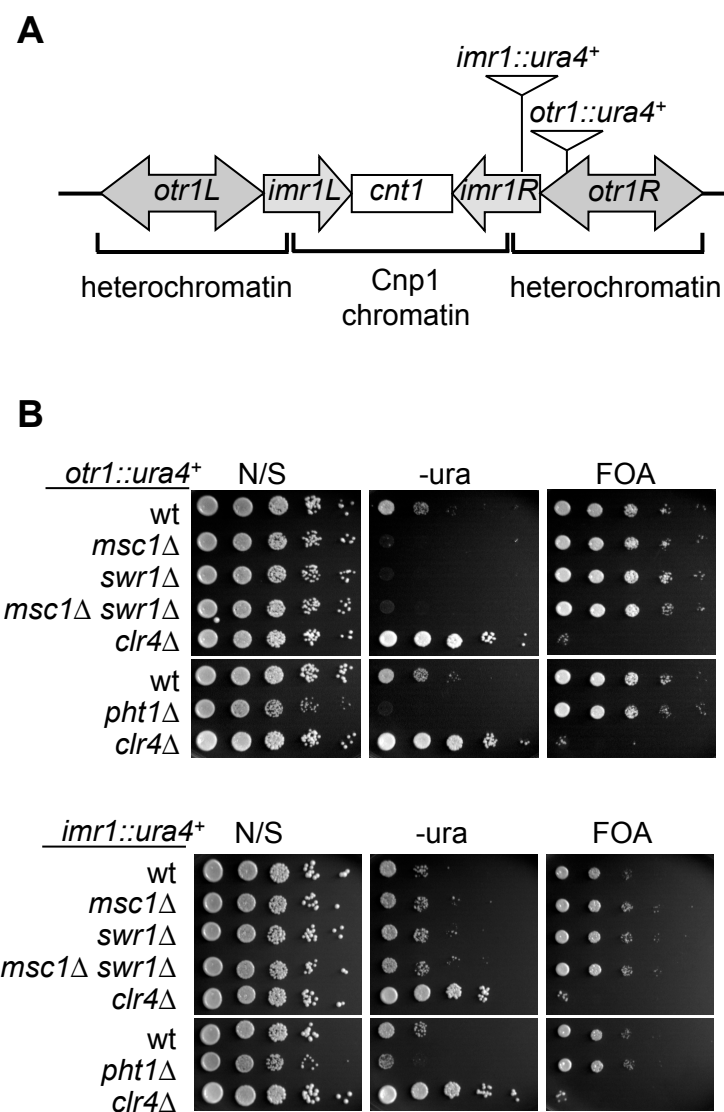


Fig. S2. H2A.Z^{Pht1} is not required for heterochromatin integrity. (A) Diagram of the fission yeast centromere 1. The insertion site of *otr1::ura4+* and *imr1::ura4+* reporter genes are indicated. (B) Serial dilution plating analysis of indicated strains were performed to measure the expression of *ura4+*.