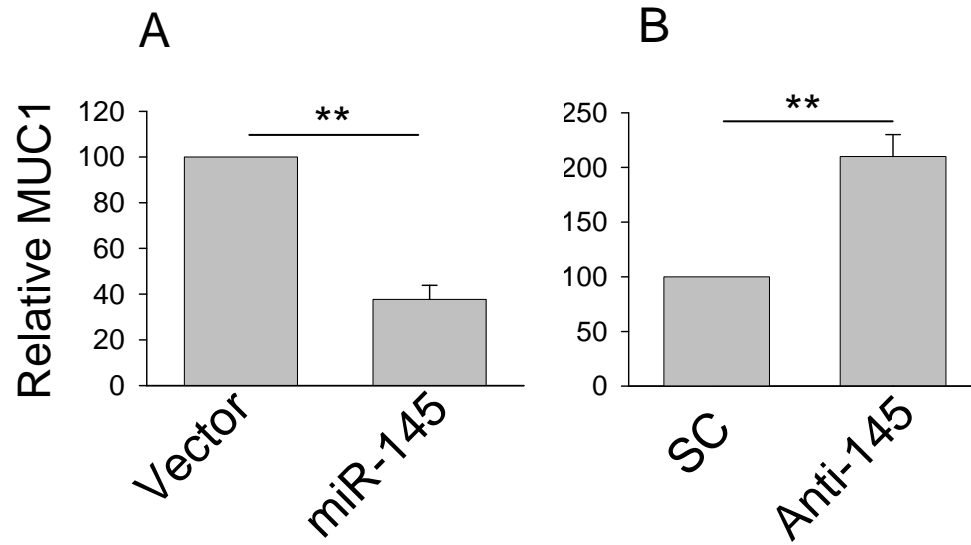
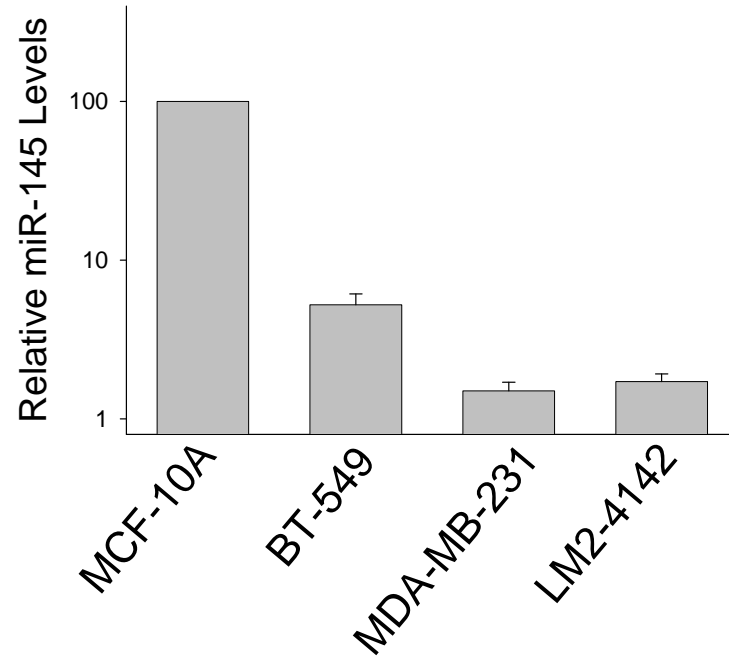


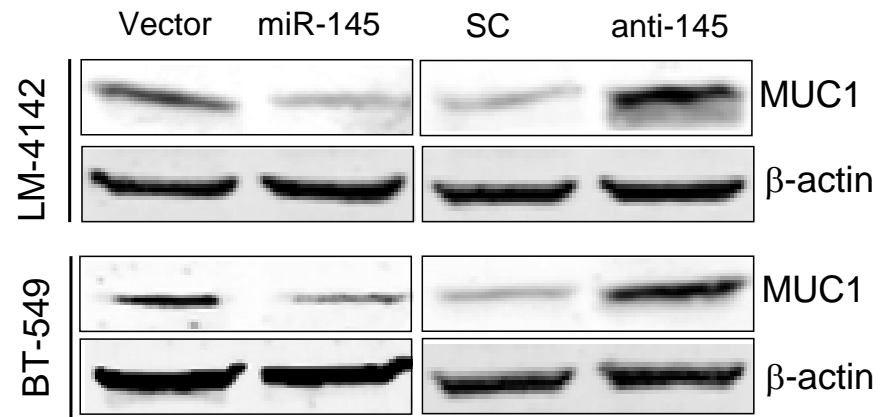
S-Fig. 1



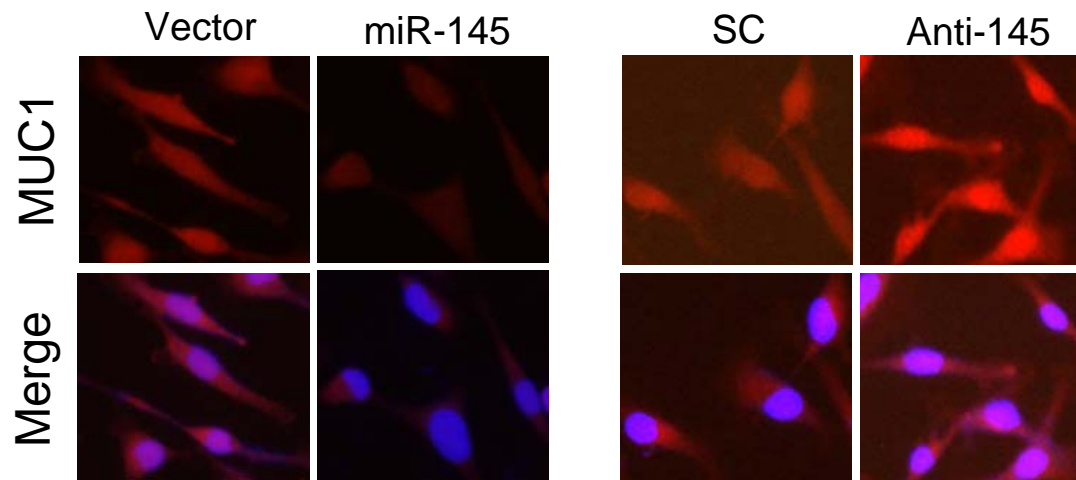
S-Fig. 2



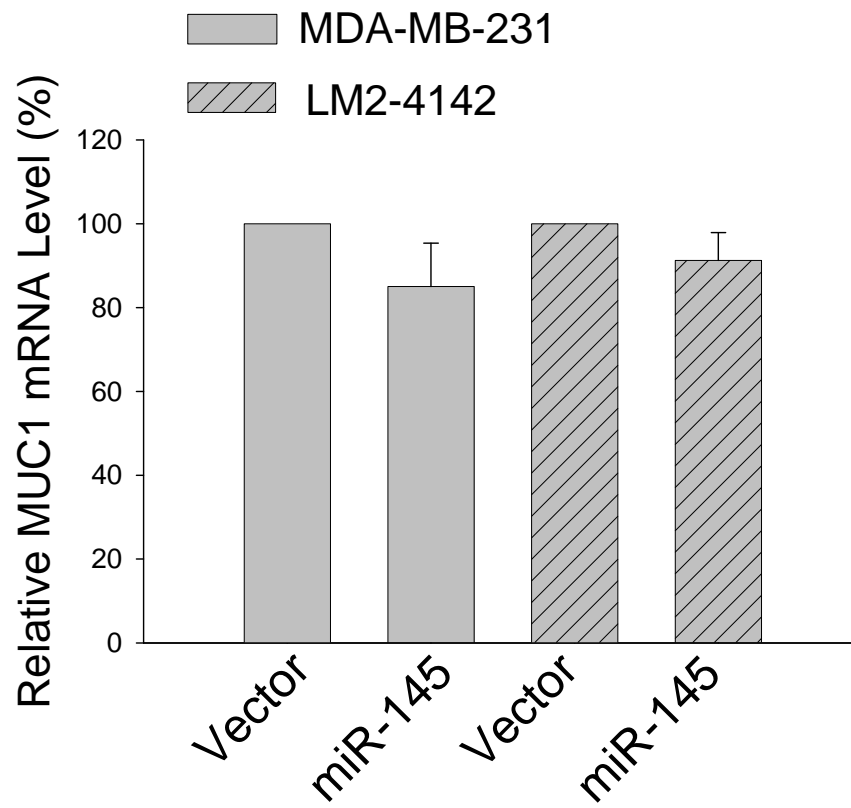
S-Fig. 3



S-Fig. 4



S-Fig. 5



S-Fig. 6

**S-Table 1 Expression of MUC1 in breast tumors**

<b>Metastatic status</b>	<b>Samples (N)</b>	<b>Level*</b>	<b>%+++**</b>
Non-metastatic (M0)	45	12 +++ 22 ++ 11 +	27%
Metastatic (M1)	4	3 +++ 1 +	75%

\*+++ , high expression; ++ medium expression; and + low expression, as determined by IHC.

\*\* Although the difference of MUC1 expression appeared to be evident between non-metastatic vs metastatic tumors, p value was not significant for those samples at the +++ level (p=0.06) by Fisher's Exact Test presumably due to a small number of metastatic tumor samples.