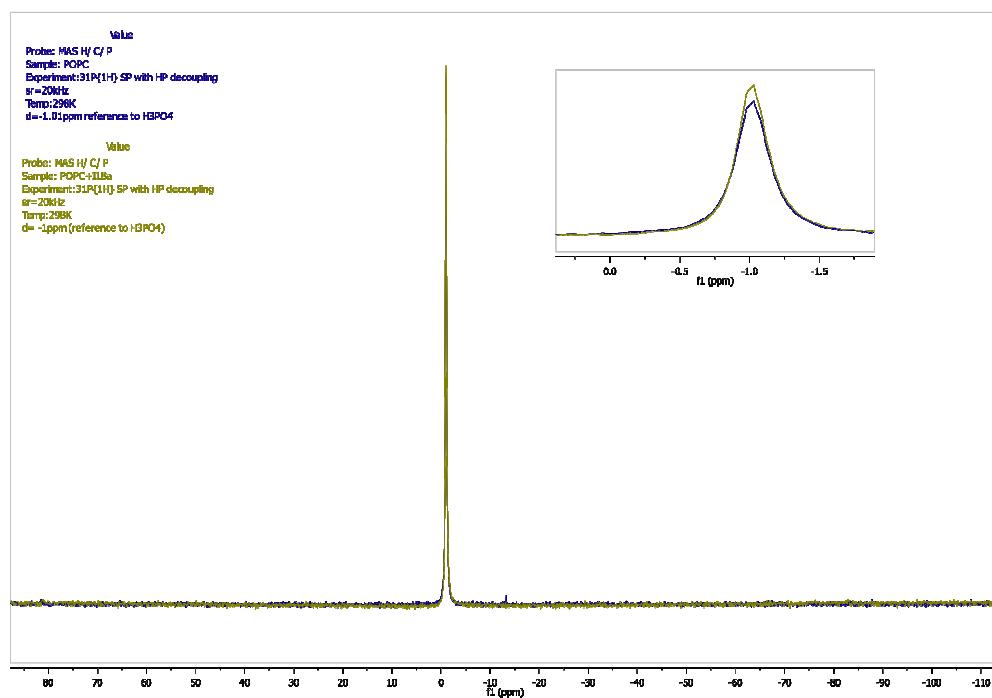


Supplementary Figure 1: Curve fitting for DOSY experiments.

Deleted: f



### Supplementary Figure 2.

<sup>31</sup>P MAS spectra of POPC in the absence and presence of 3 mol% IL-8 $\alpha$ . Spectra were recorded on a BRUKER Avance II 600 spectrometer equipped with 3.2 mm inverse probe. The proton decoupled spectra were acquired at 243.01MHz using a 7.5  $\mu$ s 90pulse followed by a Spinal64 1H decoupling at 56.8 kHz. The total number of scans was 128 and the recycle delay was set at 5s. The samples were spun at 20kHz and the temperature was fixed at 298K

Formatted: Superscript