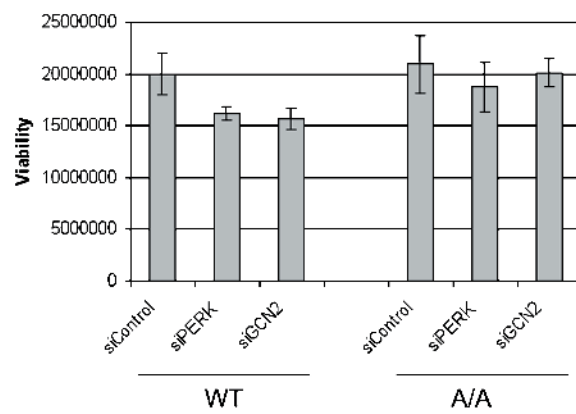


A: Cell viability at 24 h under hypoxia



B: Transfection efficiency

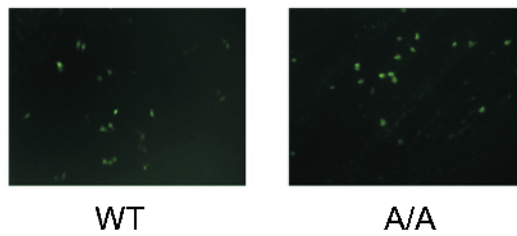


Figure W1. (A) siRNAs were transfected into MEF^{WT} and MEF^{A/A} cells to knock down PERK or GCN2. The transfected cells were exposed to hypoxia for 24 hours and viability was measured. (B) GFP vector was transfected into MEF^{WT} and MEF^{A/A} cells to show the transfection efficiency.