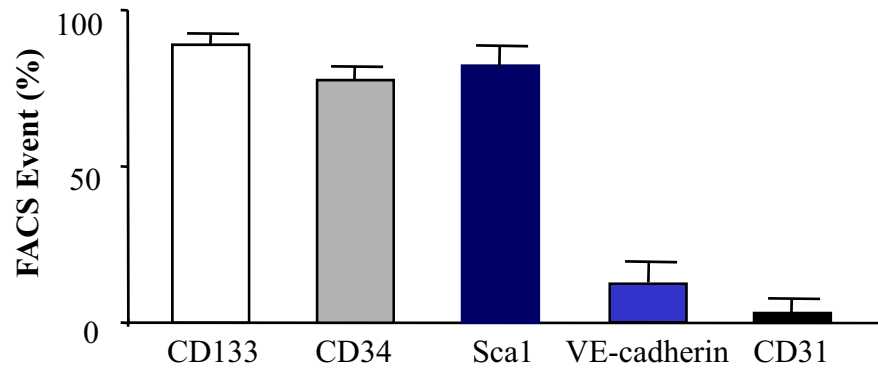


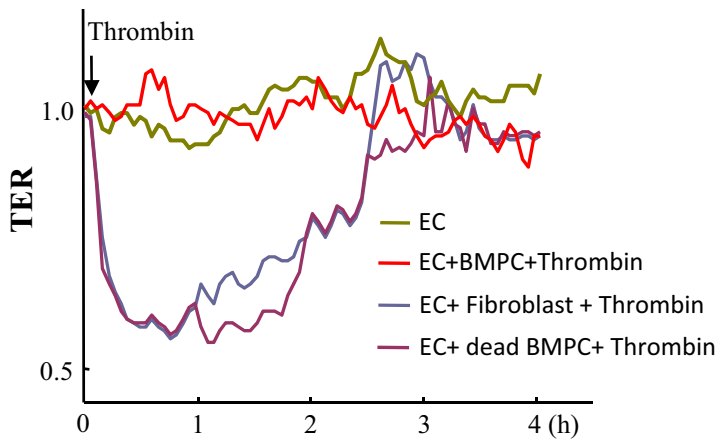
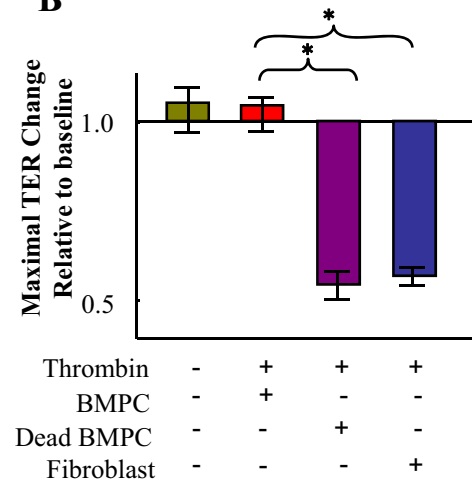
Supplemental Figure Legends

Supplemental Figure 1. FACS analysis of BMPCs demonstrating that greater than 90% of BMPCs express the progenitor cell markers. FACS analysis was made using cultured BMPCs on day21 to assess surface expression of the hematopoietic progenitor/stem cell markers (CD133, CD34, Sca1) and mature endothelial cell markers (VE-cadherin and CD31). Three independent BMPC preparations were characterized by FACS analysis. Data are expressed as mean \pm SD.

Supplemental Figure 2. The effects of fibroblasts and fixed BMPCs on thrombin-induced endothelial barrier dysfunction. BMPCs, fibroblasts and non-viable BMPC (fixed in paraformaldehyde) were co-cultured with ECs (at ratio of 1:3) for 3d prior to thrombin stimulation, and changes in TER were measured up to 4h. Representative TER measurements of three experiments are shown (A). Data of maximal TER changes are expressed as mean \pm SD (n=3) (B). *, $P < 0.01$. In contrast to BMPCs, mouse lung fibroblasts or non-viable BMPCs failed to preserve the endothelial barrier function in response to thrombin challenge (4U/mL).



Supplemental Figure 1

A**B****Supplemental Figure 2**