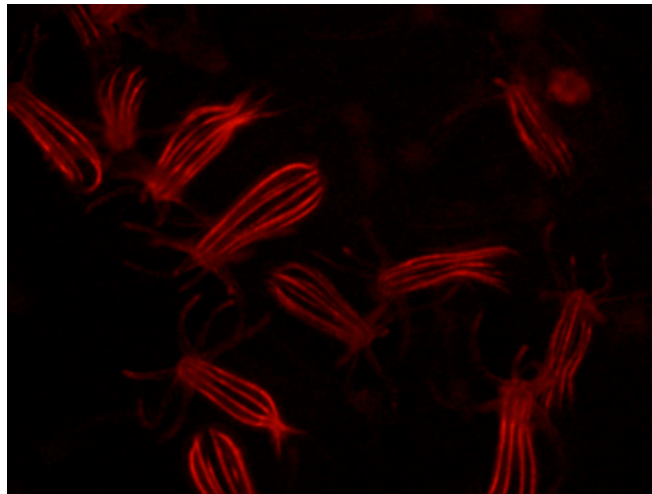


Supporting Information

Renfer et al. 10.1073/pnas.0909148107

Other Supporting Information Files



Movie S1. G₁ *MyHC::mCherry* transgenic primary polyps expressing mCherry in the retractor muscles of all eight mesenteries. Polyps continuously undergo peristaltic movements from oral to aboral, which are probably part of the digestion and distribution of enzymes and nutrients in the gastric cavity. Movie taken under the Nikon Stereomicroscope SZM645 equipped with epifluorescence and mCherry filters. Movies were taken with a Nikon Camera set at 5 frames/sec using the NIS-BR software and shown at real time.

[Movie S1 \(MOV\)](#)