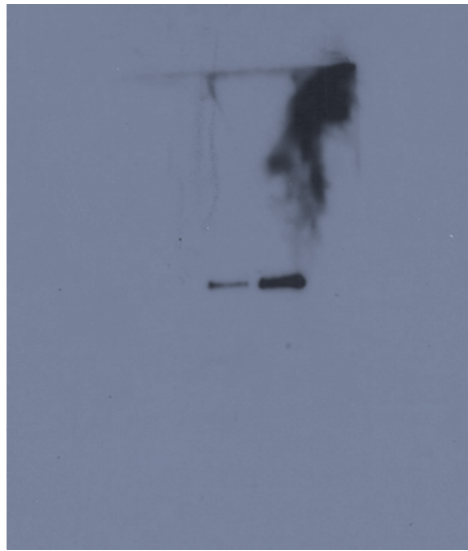
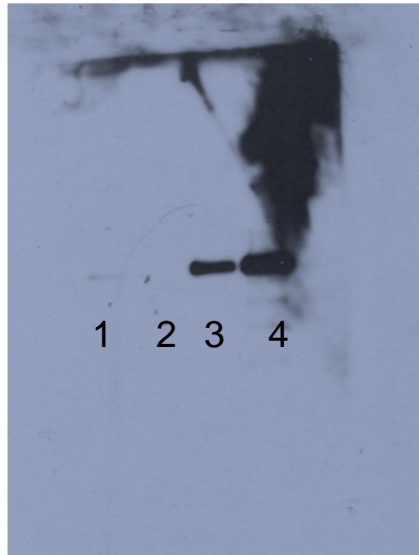


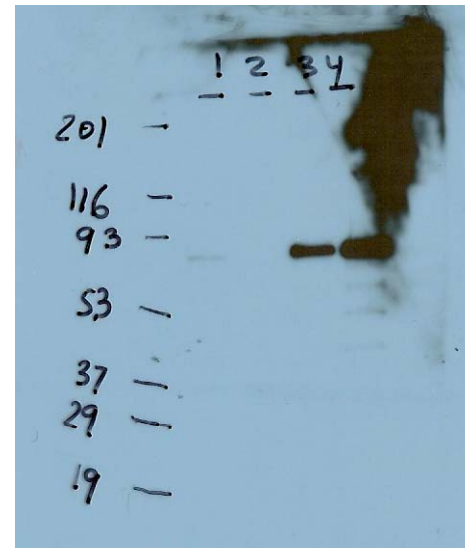
Fig. 1B (Top panel)



Shorter exposure



Longer exposure-1



Longer exposure-2

anti-NO66

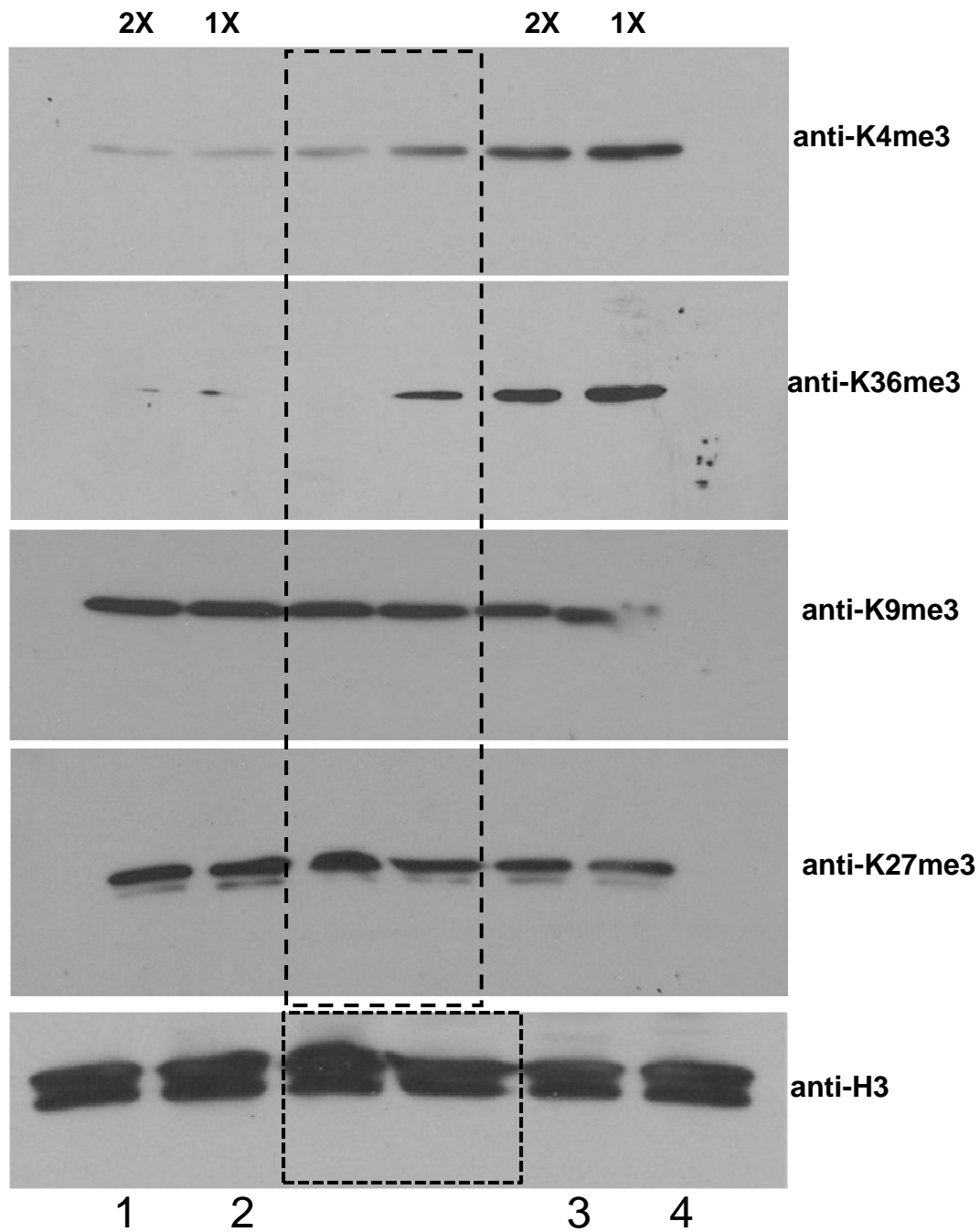
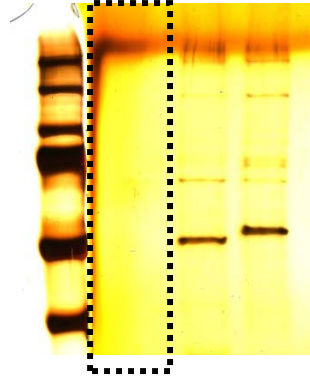


Fig. 4C

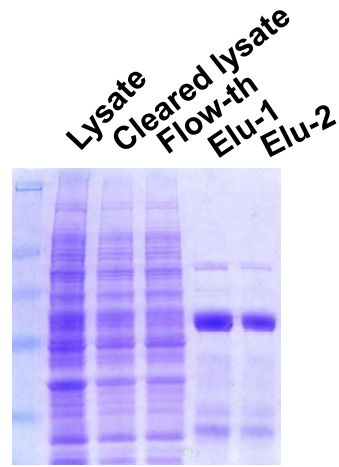
Western blot with specific antibodies

Middle two lanes indicated by dotted lines were cropped out in the manuscript (Fig 4C), though all lanes came from a same gel. The cropped lanes contained the samples from reactions to test demethylase activity of another NO66 mutant, however, these lanes were not relevant to this study

Fig.5B (Left panel)

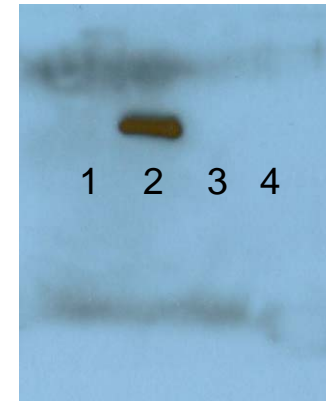


Empty lane with dotted line was cropped out



Preparation of GST-Osx (1-270) – last lane (Elution-2) was indicated in the Fig 5B (Left panel)

Fig. 5B (Right panel)



Western blot with anti-myc antibody