

Supporting Information

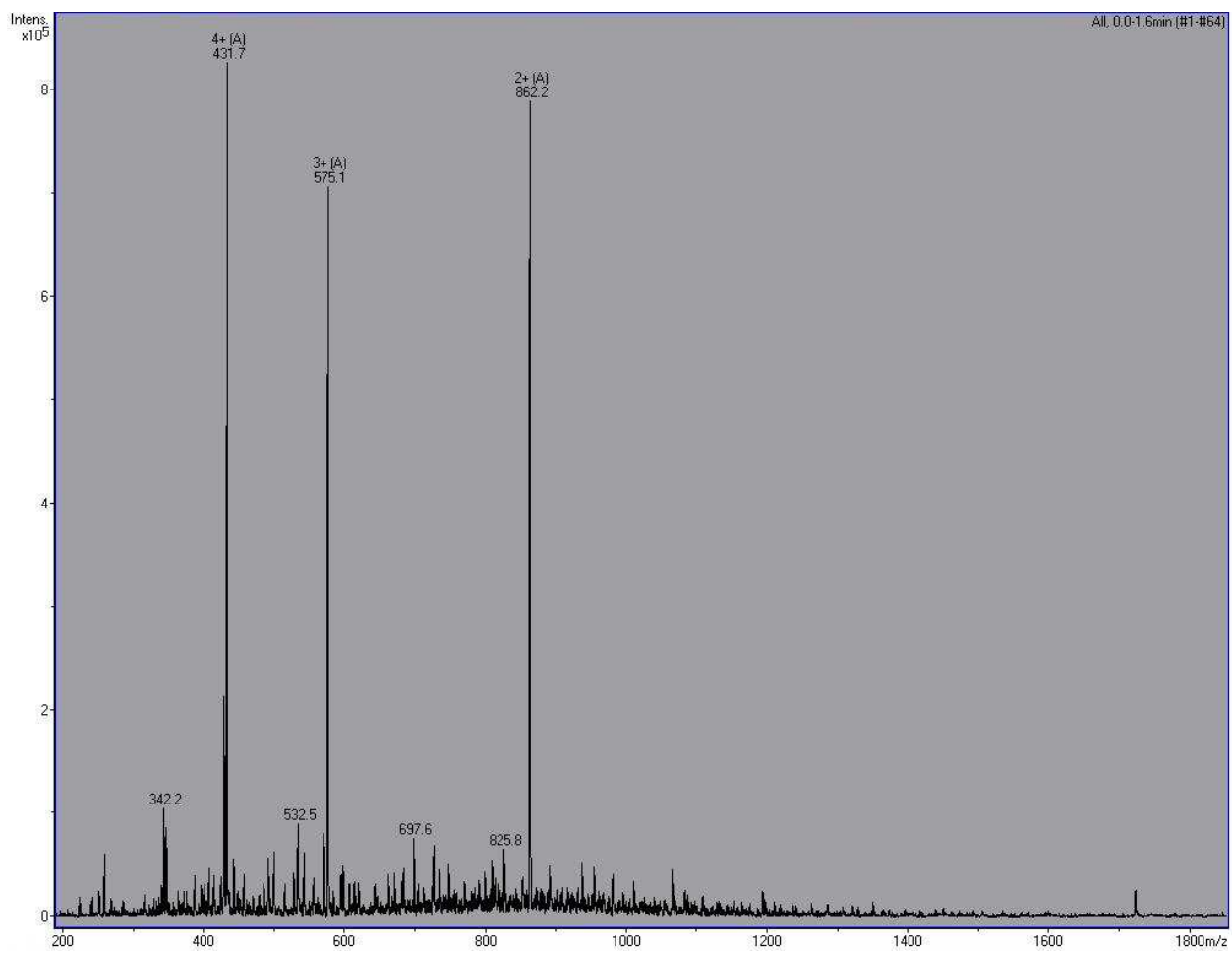


Figure S1. Mass spectrum obtained from the K₁₁ peptide. Species A has the confirmed mass of K₁₁.

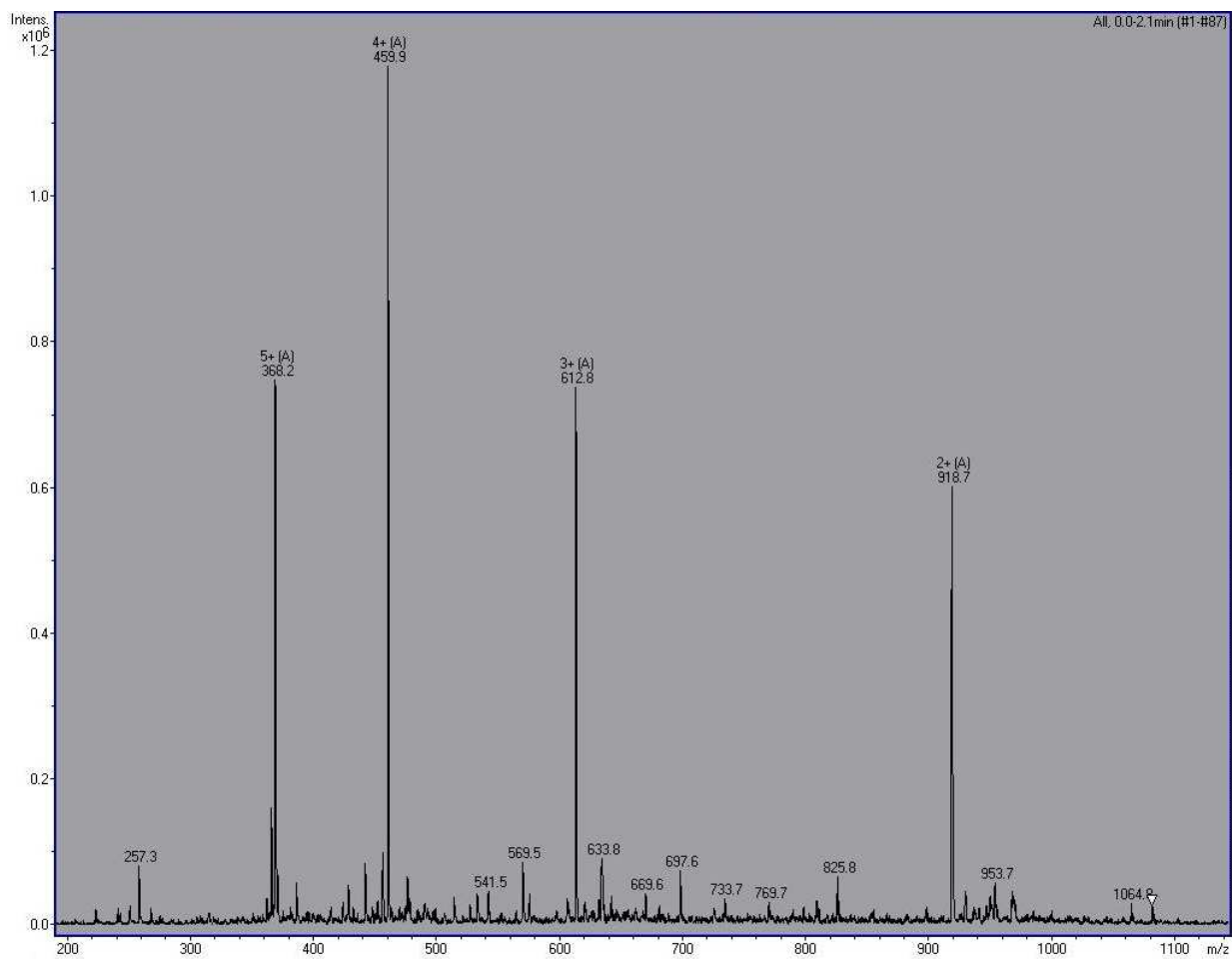


Figure S2. Mass spectrum obtained from the K_{11} -Ahx peptide. Species A has the confirmed mass of K_{11} -Ahx.

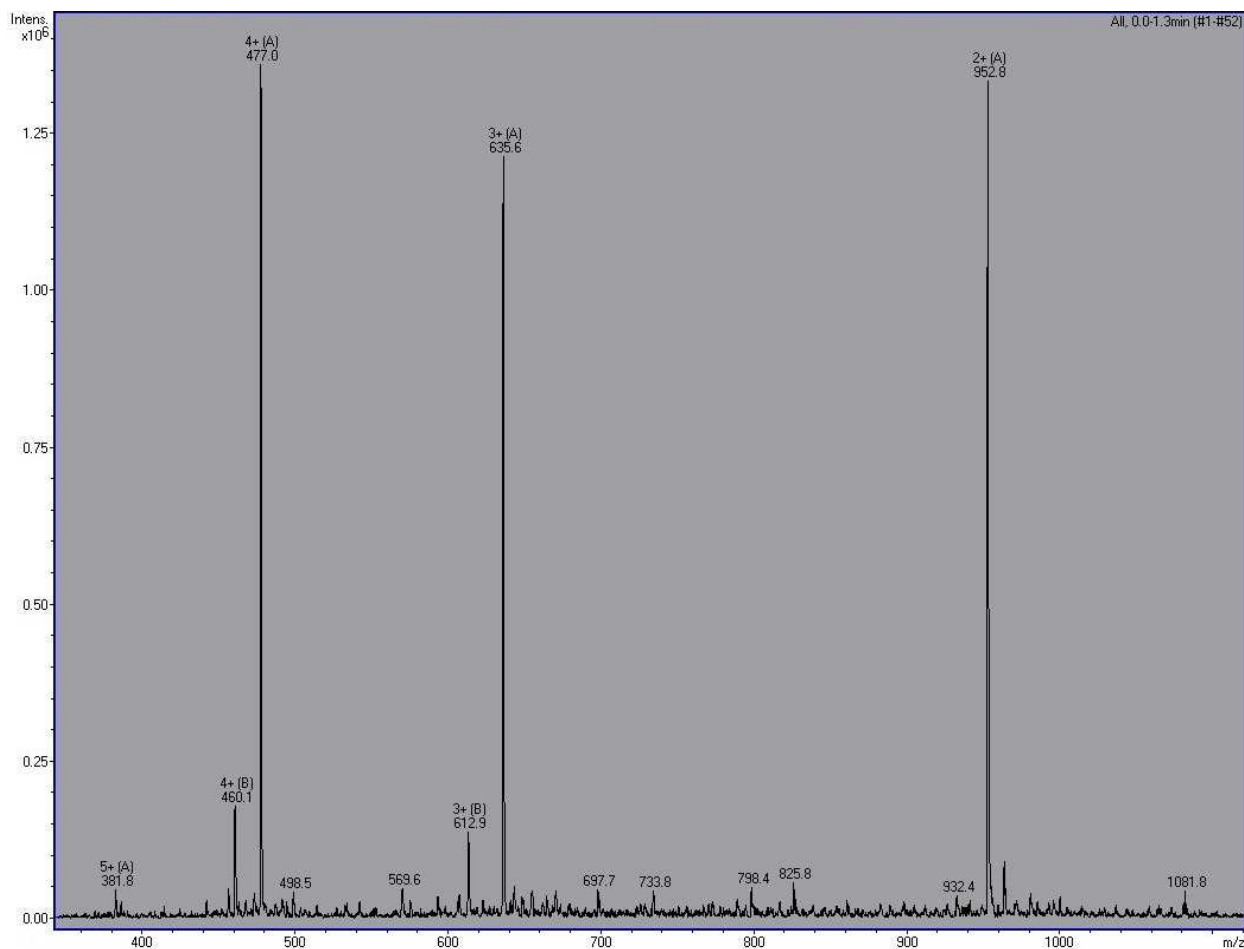


Figure S3. Mass spectrum obtained from K₁₁-Ahx-MC peptide. Species A has the confirmed mass of K₁₁-Ahx-MC while species B has the confirmed mass of K₁₁-Ahx, indicating that a small percentage of the K₁₁-Ahx is not modified with MC.

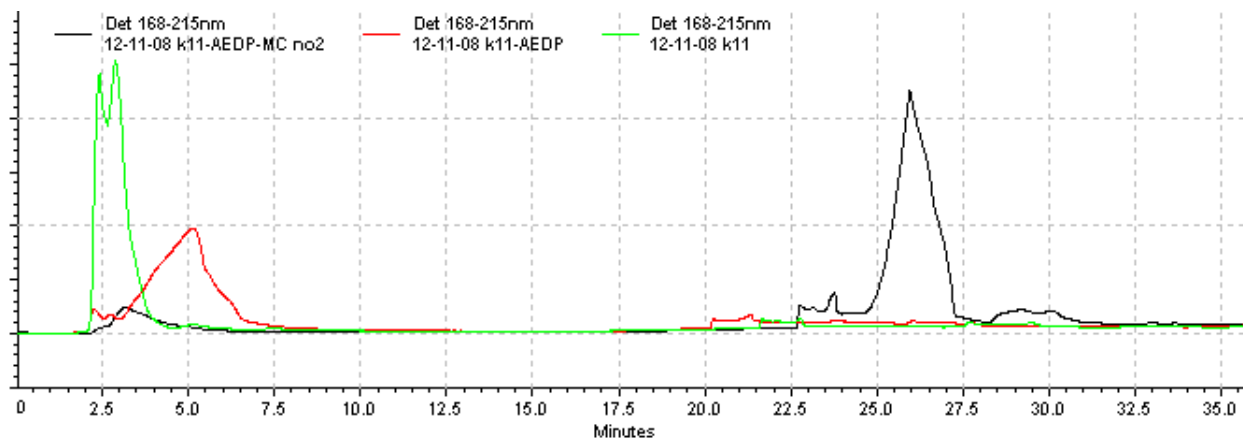


Figure S4. Assessment of peptide purity by HPLC. HPLC was performed using a Jupiter 4 μm Proteo 90 \AA (250 x 4.6 mm) reversed phase analytical column (Phenomenex) and a gradient from 98% Buffer A (H_2O + 0.01% TFA) to 10% Buffer B (Acetonitrile + 0.01% TFA) developed over 30 minutes. K_{11} (green) elutes around 2.5 min, K_{11} -AEDP (red) elutes around 5 min, and K_{11} -AEDP-MC (black) elutes around 26 min. As can be seen from the black trace, some unmodified K_{11} -AEDP remains after reaction with MC, but this is only a small fraction (<10%) of the total peptide.