

Supporting Information

Investigation of the Relative Cellular Permeability of DNA-binding Pyrrole- Imidazole Polyamides

Bo Liu and Thomas Kodadek

Contents of Supporting Information:

Figure S1. Relative GRLBD binding affinities of Py-Im polyamide dexamethasone conjugates determined by fluorescence polarization assay.	S2-S4
Figure S2. Dose dependent luciferase activities induced by Py-Im polyamide – Sdex conjugates in breast cancer MCF7 cells.	S5
Figure S3. ^1H NMR spectrum of Sdex-isothiocyanate (3).	S6
Figure S4. ^{13}C NMR spectrum of Sdex-isothiocyanate (3).	S7

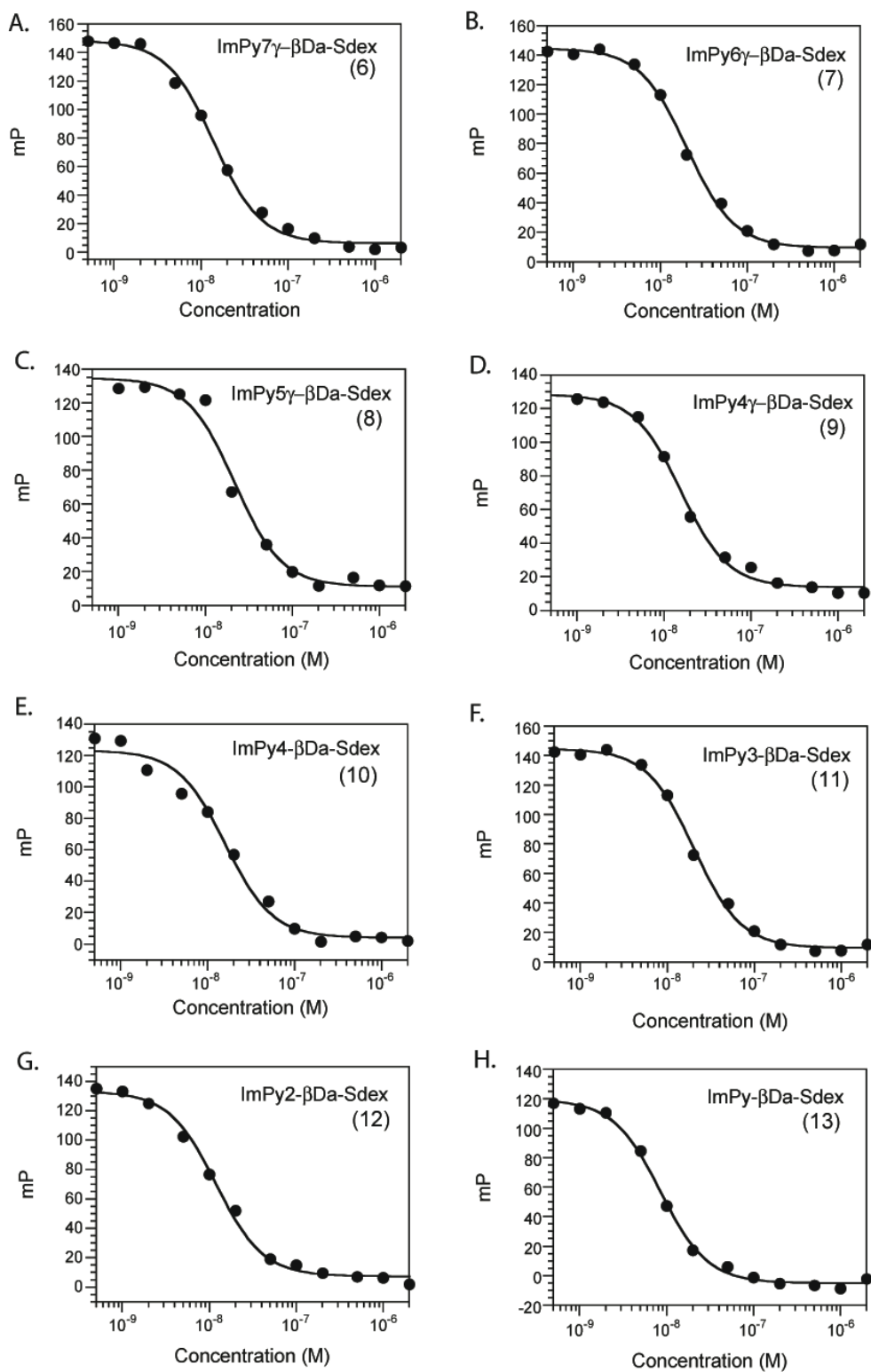


Figure S1. Relative GRLBD binding affinities of Py-Im polyamide dexamethasone conjugates determined by fluorescence polarization assay.

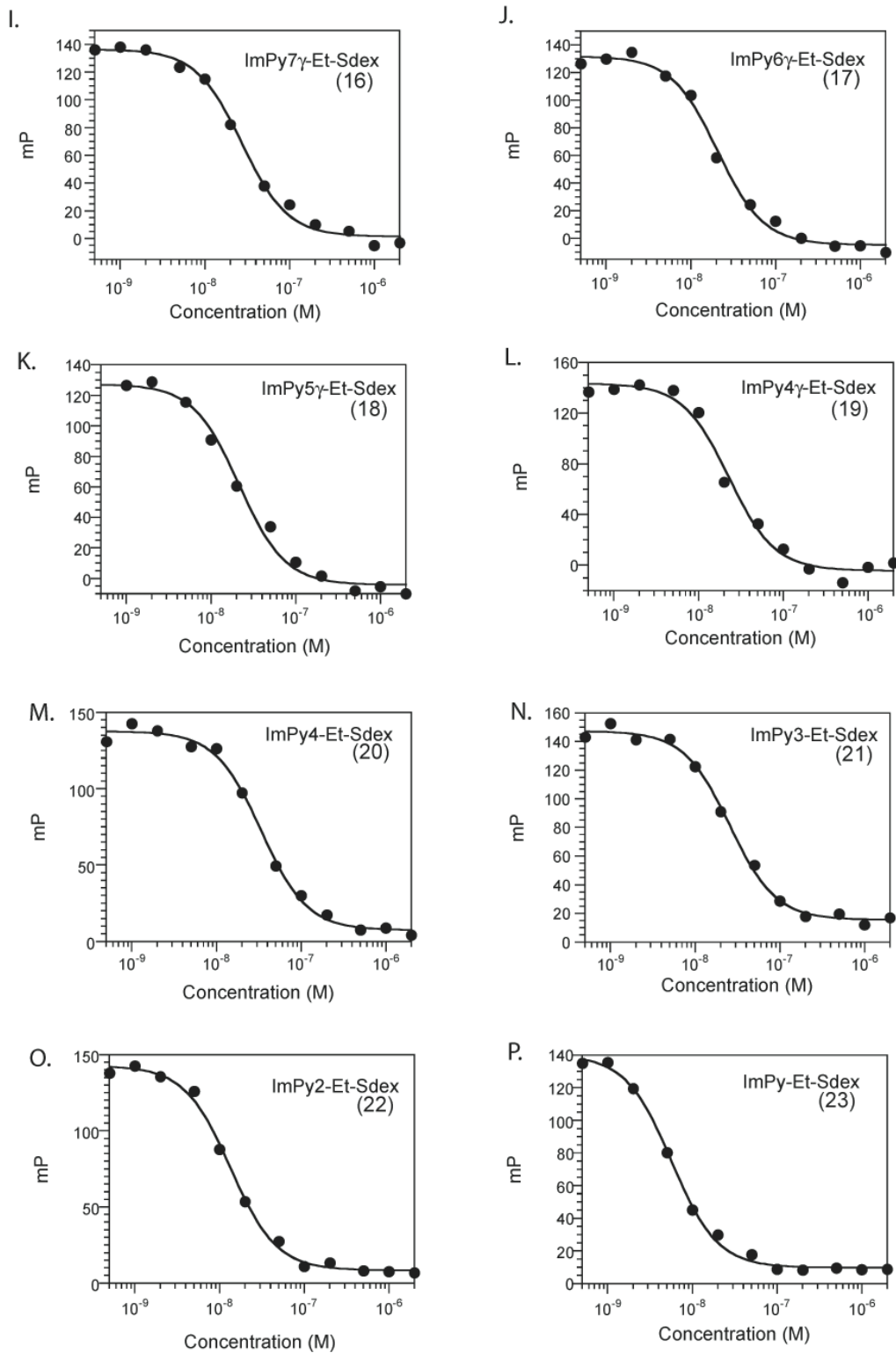


Figure S1 (continue)

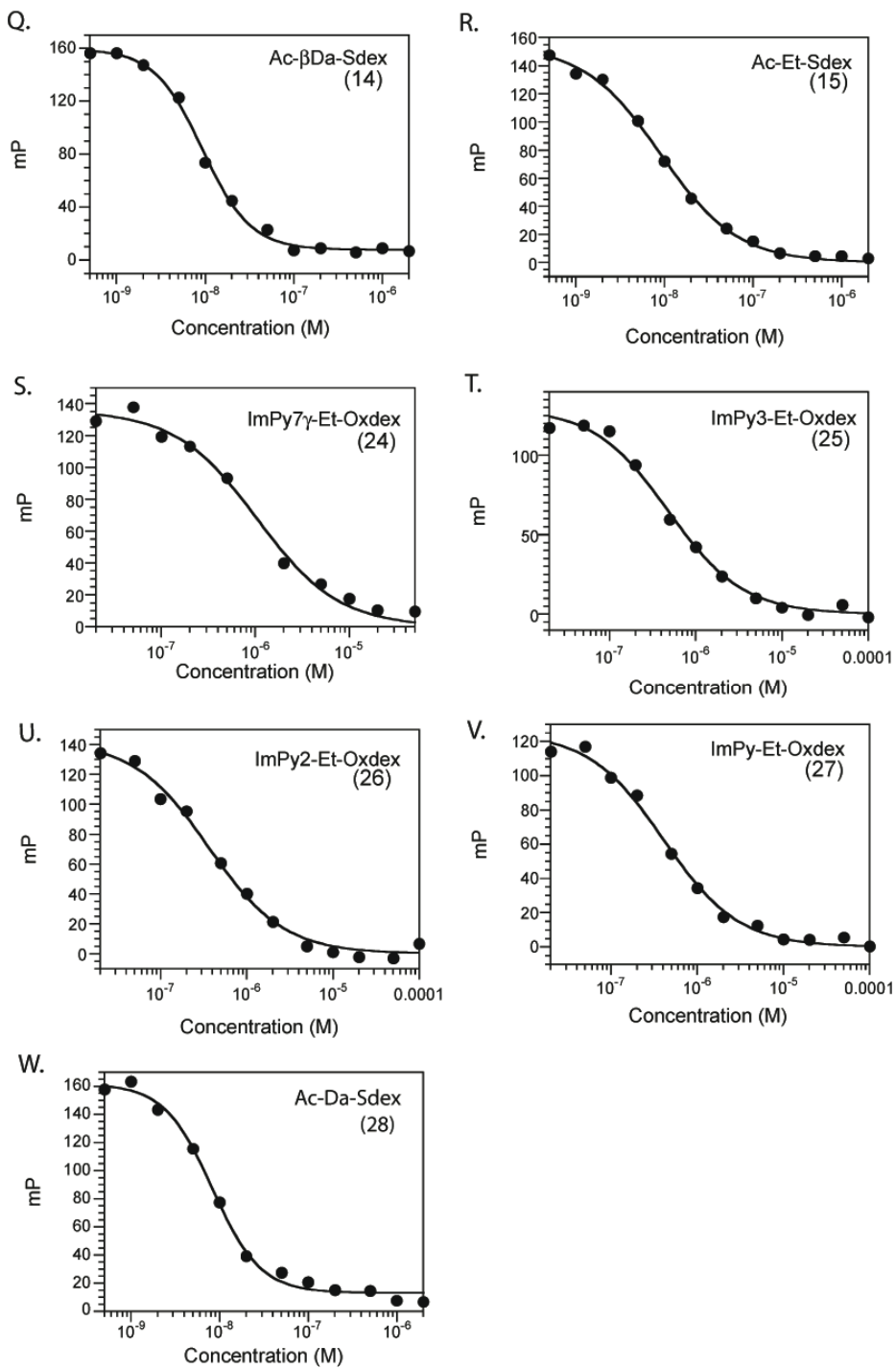


Figure S1 (continue)

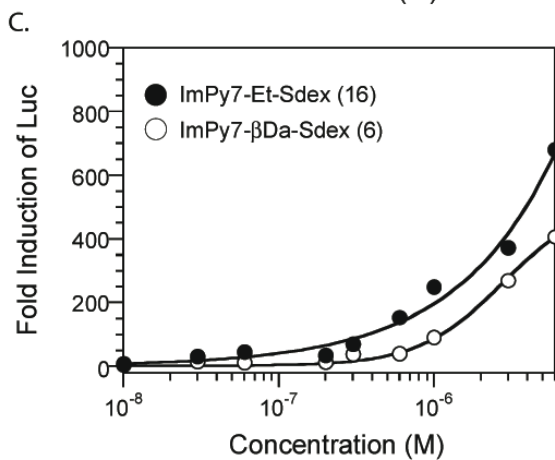
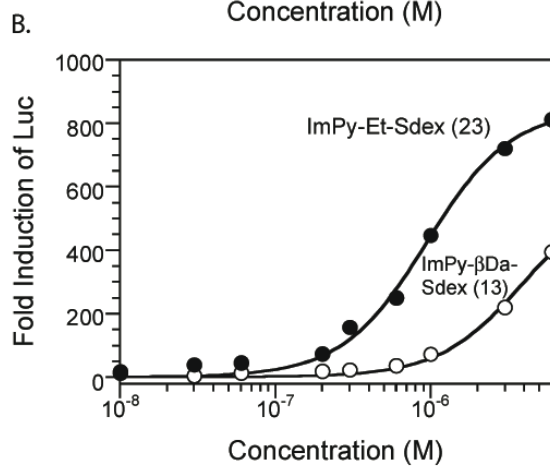
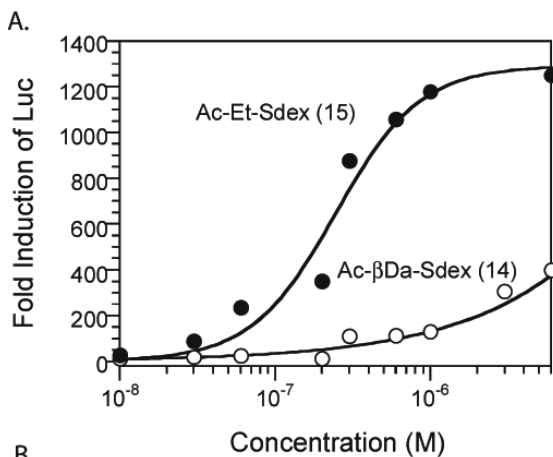


Figure S2. Dose dependent luciferase activities induced by Py-Im polyamide – Sdex conjugates in breast cancer MCF7 cells. A. Comparison between **15** (●) and **14** (○). B. Comparison between **23** (●) and **13** (○). C. Comparison between **16** (●) and **6** (○).

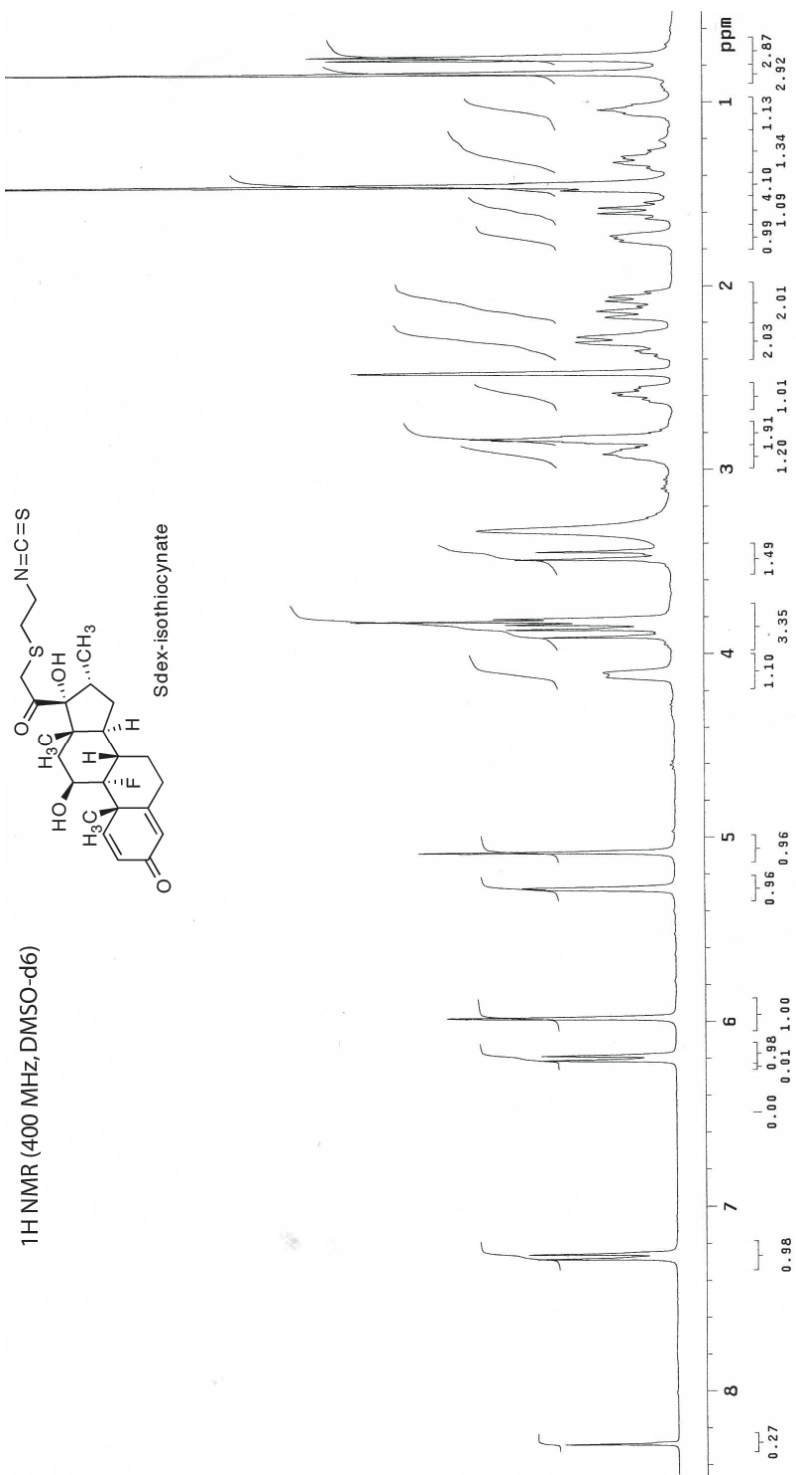


Figure S3. ¹H NMR spectrum of Sdex-isothiocyanate (**3**).

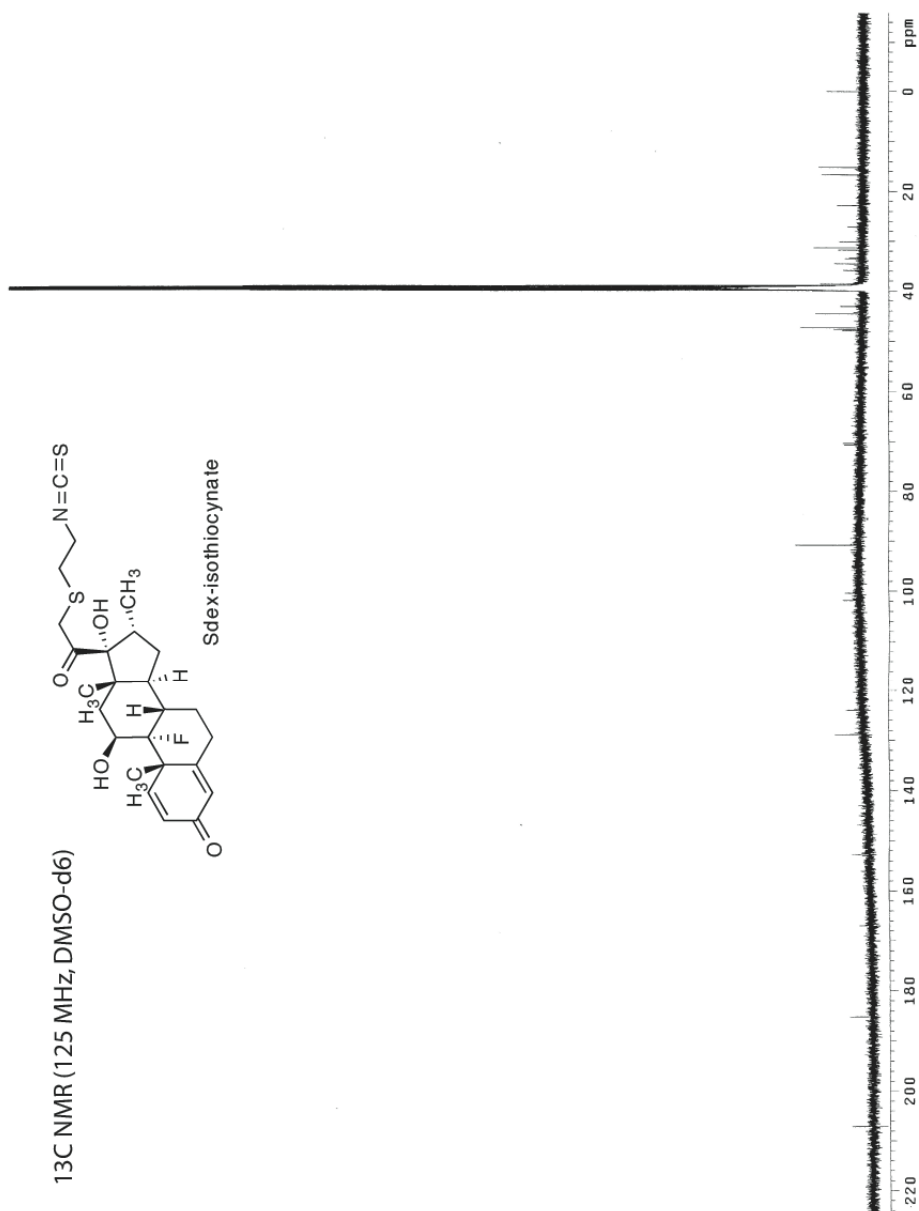
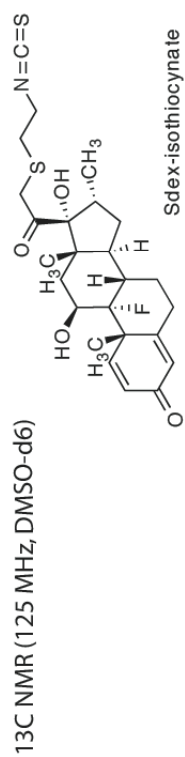


Figure S4. ^{13}C NMR spectrum of Sdex-isothiocyanate (**3**)