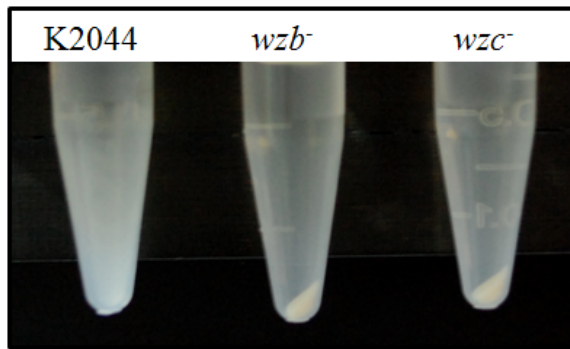
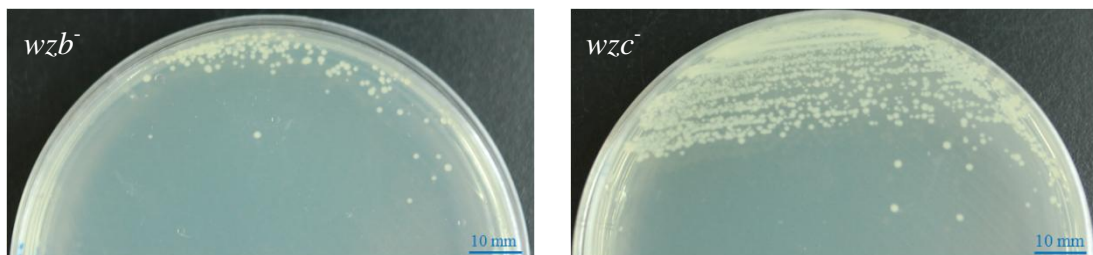


(A)



(B)



Supplemental Data 4. Characterization of tyrosine phosphatase (*wzb*⁻) and kinase (*wzc*⁻) knockout strains.

(A) These strains tested were cultured overnight in LB broth at 37°C and subjected to centrifugation at 10,000 xg for 5 min. In contrast to highly encapsulated strains, K2044, *wzb*⁻ and *wzc*⁻ mutants showed compact pellet after centrifugation. (B) These strains were cultured overnight on LB agar plates at 37°C. The diameters of *wzb*⁻ and *wzc*⁻ were less than 1.5 mm like *magA*⁻ strain.