

Figure S1. Pathology following germline deletion of *Npc1*. Immunohistochemical staining for markers of microglia (Iba1, top row) and astrocytes (GFAP, middle row) demonstrate gliosis in *Npc1*^{-/-} and *Npc1*^{Δ/-}, but not control cerebella. (Bottom row) H&E staining of liver tissue demonstrates foamy macrophages in *Npc1*^{-/-} and *Npc1*^{Δ/-} mice, but not controls.

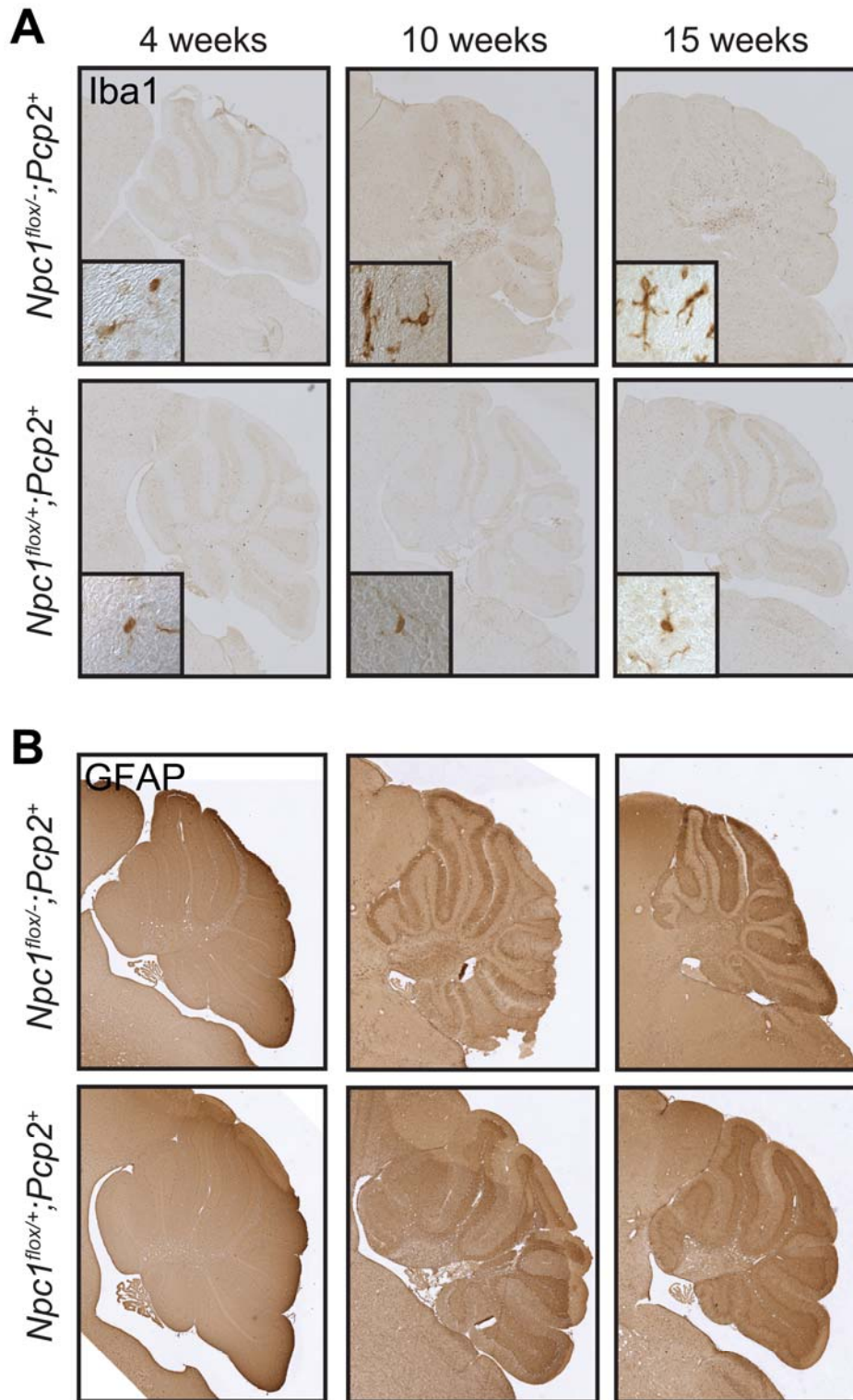


Figure S2. Reactive gliosis in Purkinje cell specific *Npc1* null mutants. **(A)** Staining for Iba1 reveals proliferation of microglia with activated morphology in *Npc1^{flox/-};Pcp2-Cre⁺* mice, but not controls. **(B)** Staining for GFAP reveals proliferation of astrocytes in the molecular layer of *Npc1^{flox/-};Pcp2-Cre⁺* mice, but not controls.