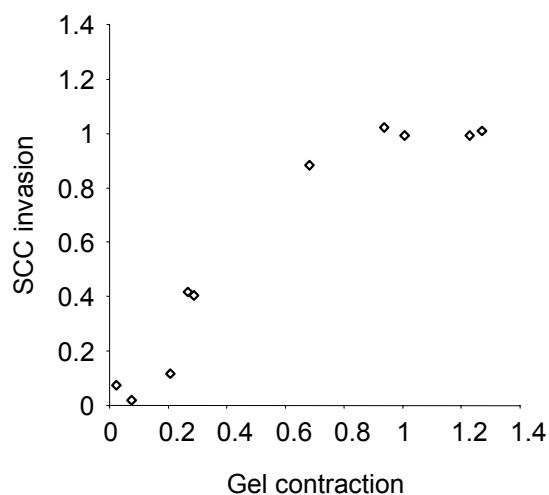


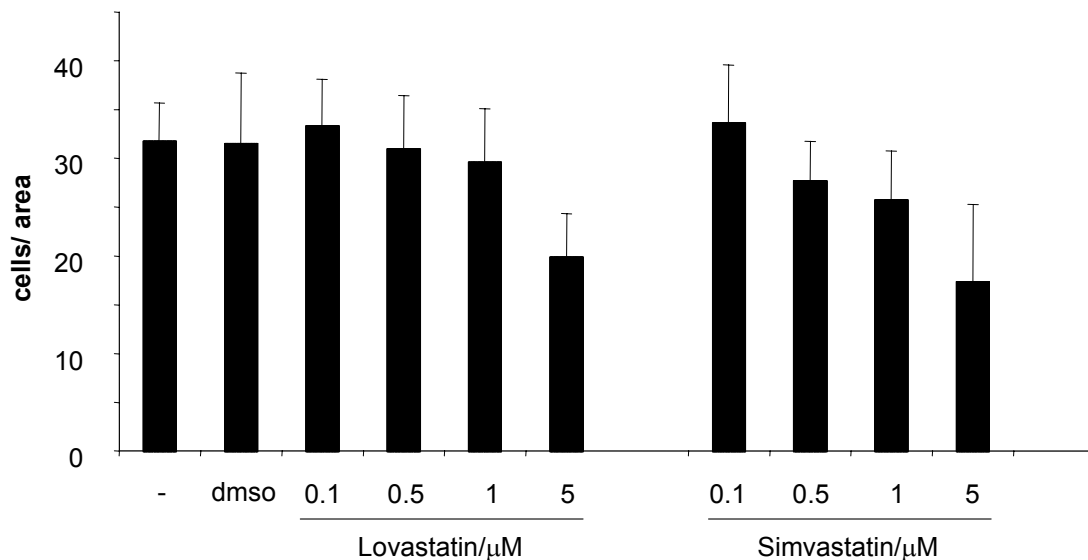
Supplementary Figure 1 Hooper et al.,



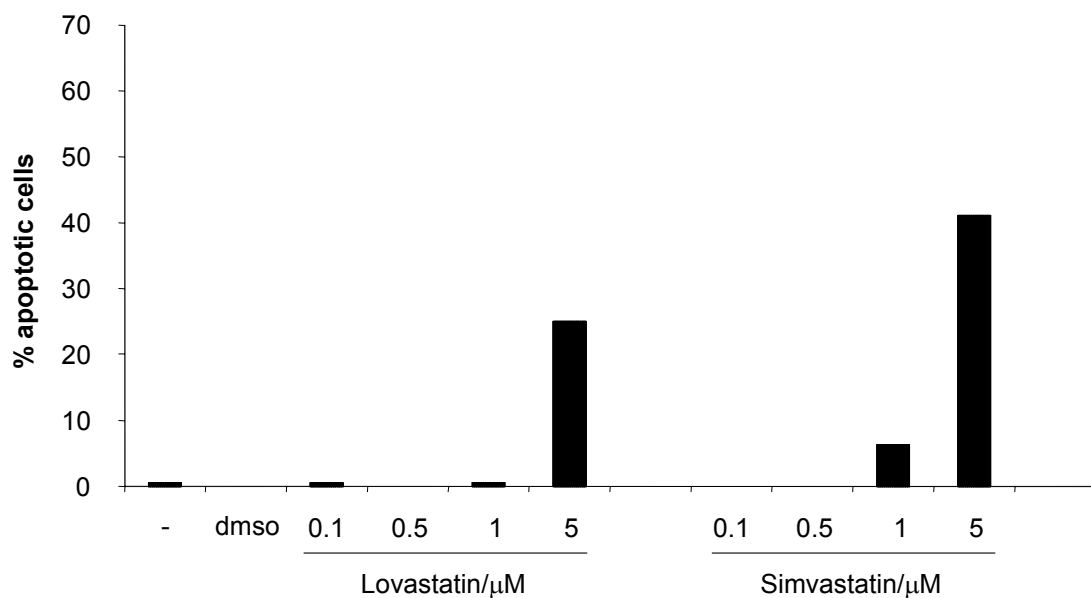
Supplementary Figure 1: Correlation between macroscopic matrix contraction by carcinoma associated fibroblasts and their ability to promote SCC invasion. Each point corresponds to a different siRNA treatment or inhibitor treatment (data for siRNA against integrins $\alpha 1$, $\alpha 2$, $\alpha 3$, $\alpha 4$, $\alpha 5$, αV and the following inhibitors 10 μ M Y27632, 10 μ M H1152, Tat-C3). Values for both gel contraction and SCC invasion are normalized to 1. Original data from Gaggioli et al., (1).

Supplementary Figure 2 Hooper et al.,

A

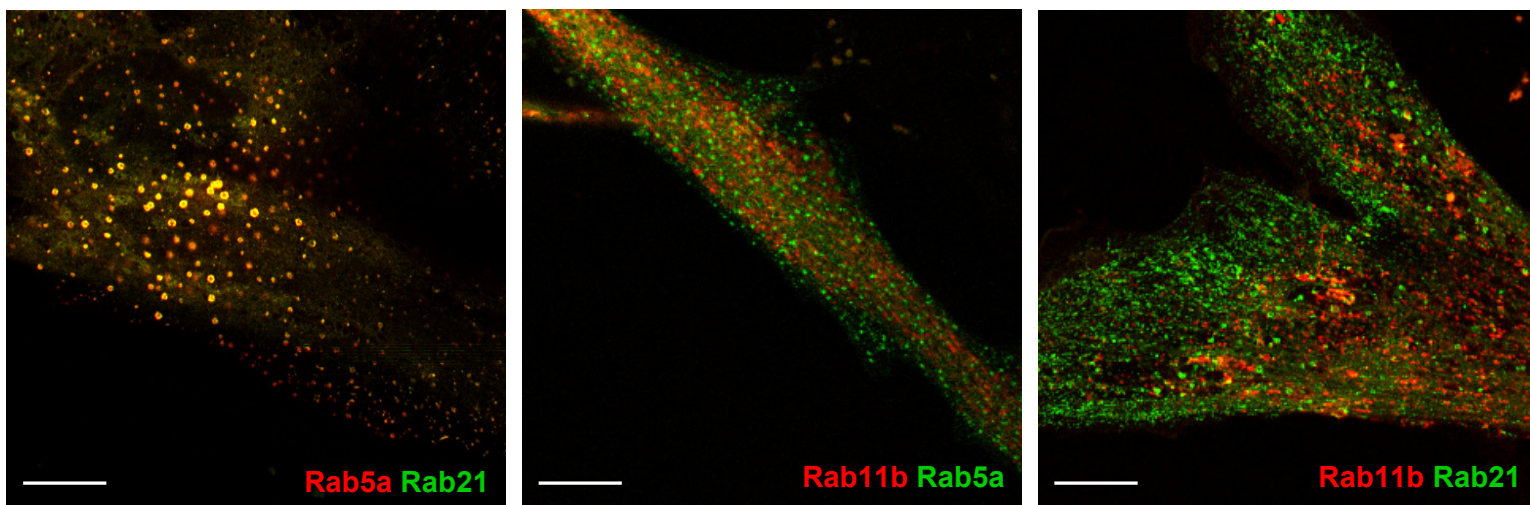


B



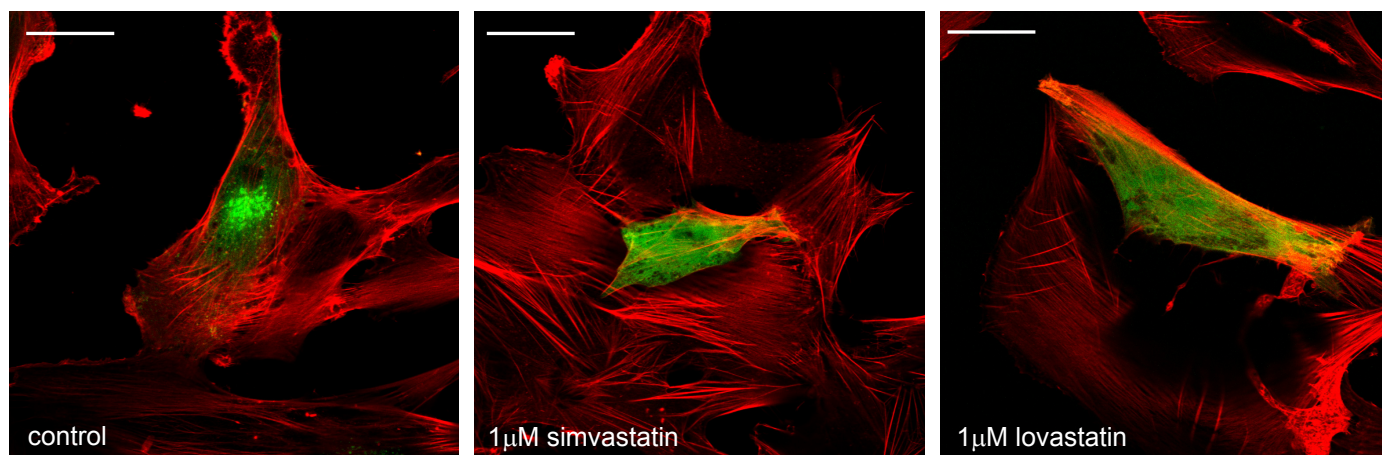
Supplementary Figure 2: A) Fibroblasts were plated on top of collagen I/matrigel matrices and treated with the indicated dose of statin for 4 days. The number of cells present per 20x microscope field was then determined - the average of three fields is shown. B) Fibroblasts were plated on top of collagen I/matrigel matrices and treated with the indicated dose of statin for 4 days. The number of apoptotic cells present per 20x microscope field was then determined based on nuclear morphology following DAPI staining - the average of three fields is shown.

Supplementary Figure 3 Hooper et al.,

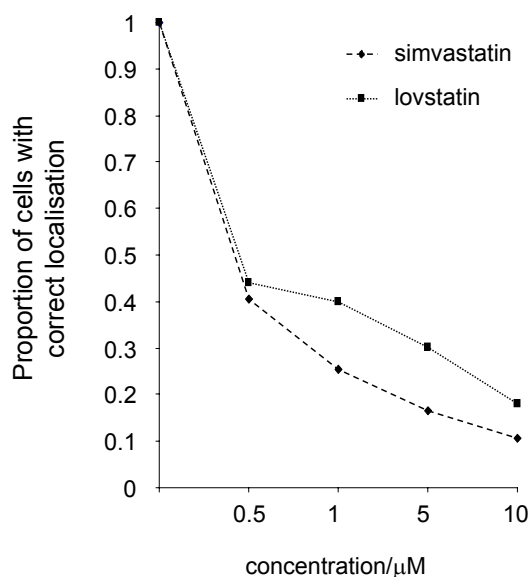


Supplementary Figure 3: The relative localisation of Rab5a, 11b and 21 in CAF's is shown: left panel shows Rab5a (red) and Rab21 (green), middle panel shows Rab11b (red) and Rab21 (green) and right panel shows Rab11b (red) and Rab5a (green). Scale bar is 10 μ m.

A

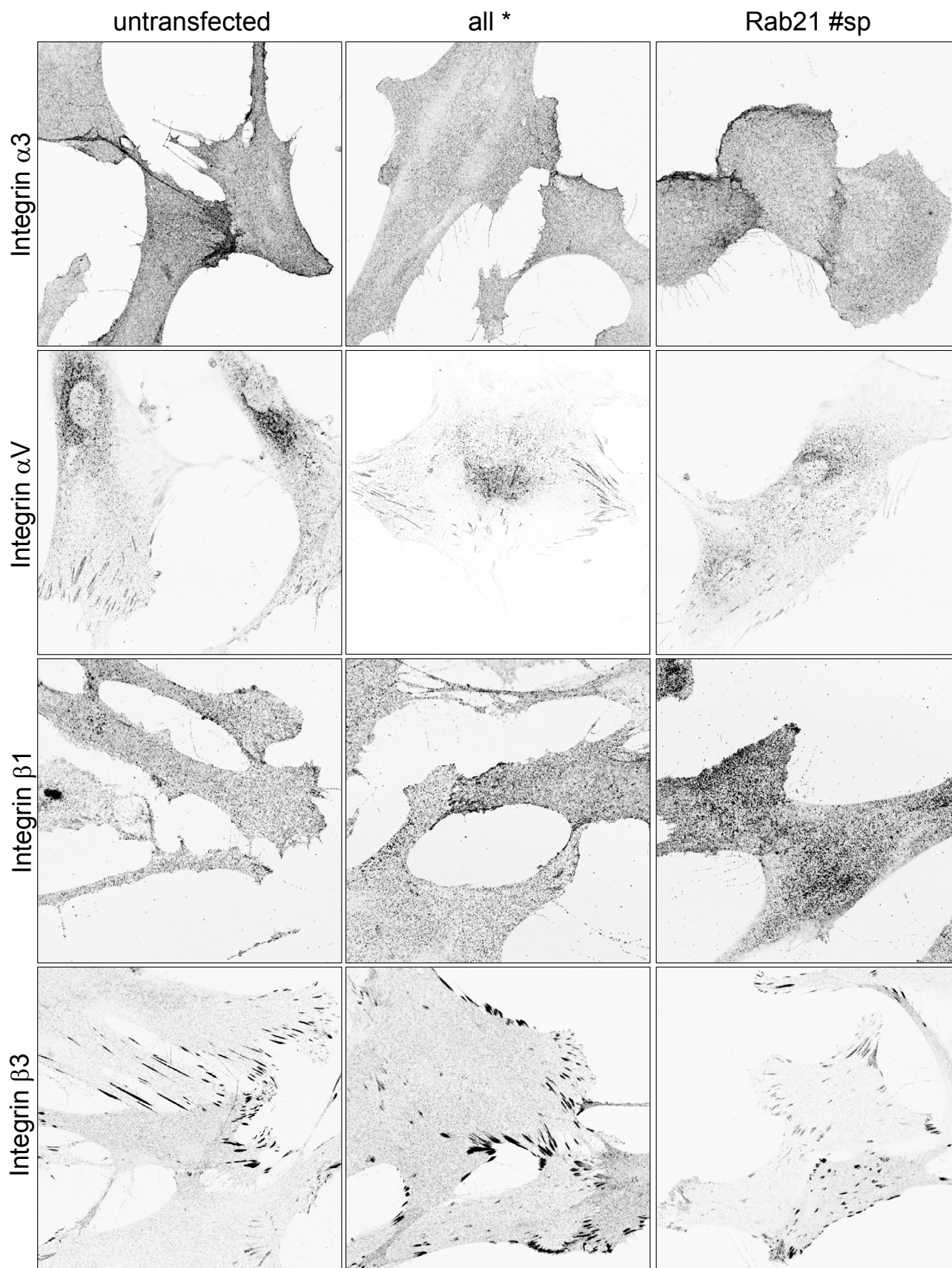


B



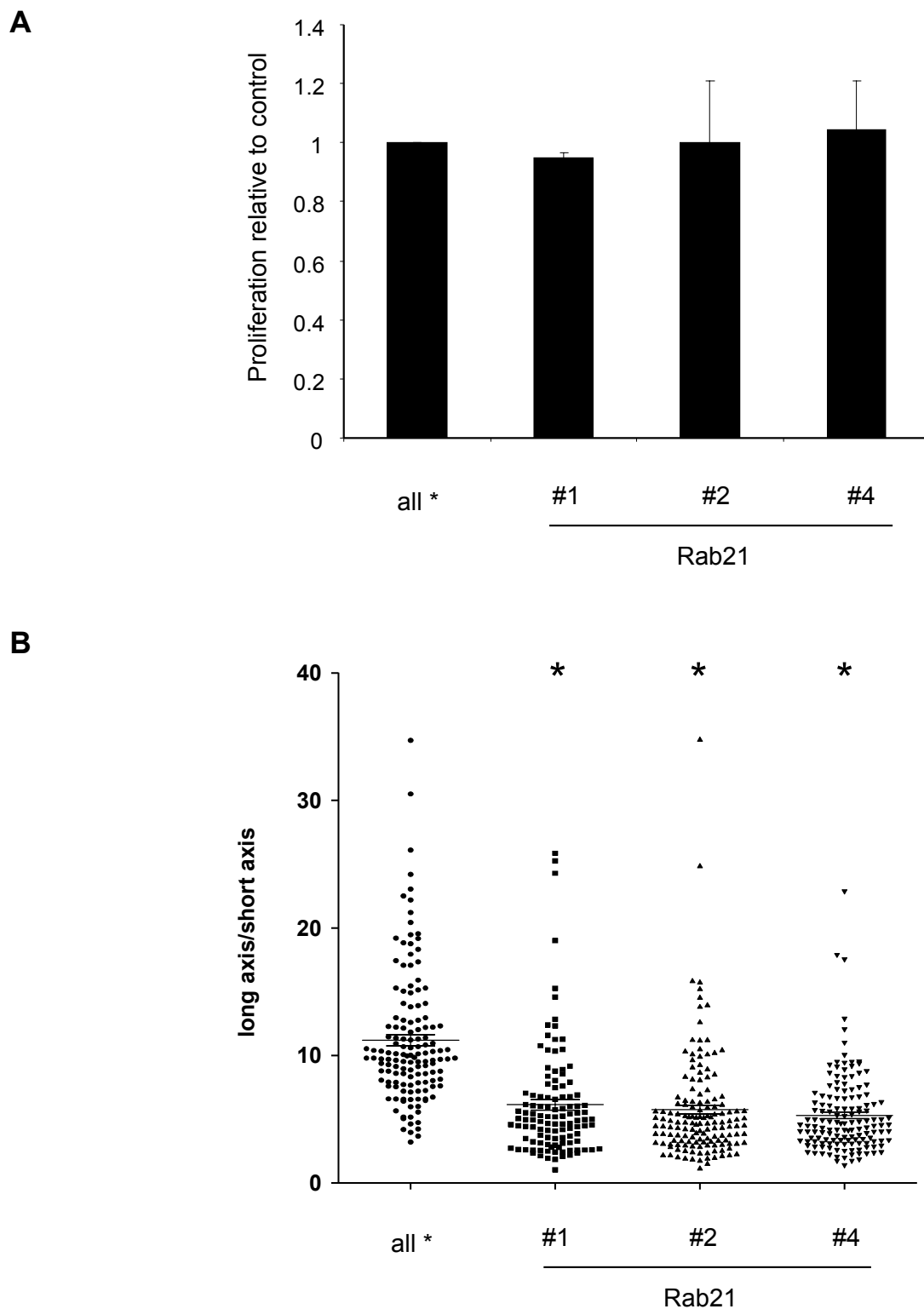
Supplementary Figure 4: A) The localisation of CFP-Rab21 is shown (in green) in control or 1 μ M simvastatin- or 1 μ M lovastatin-treated fibroblasts. F-actin is shown in red – scale bar is 40 μ m. B) Quantification of the proportion of CAF's with correct sub-cellular targeting of CFP-Rab21 at the indicated doses of lovastatin or simvastatin. Average of two experiments.

Supplementary Figure 5 Hooper et al.,



Supplementary Figure 5: The localization of integrins $\alpha 3$, αV , $\beta 1$ and $\beta 3$ is shown in untransfected, 'all *' and Rab21 smart pool siRNA transfected cells. Area 145x145 μm is shown.

Supplementary Figure 6 Hooper et al.,



Supplementary Figure 6: A) The effect of Rab21 siRNA (oligos 1, 2, & 4) on CAF proliferation relative to allstars control siRNA is shown. B) The effect of Rab21 siRNA (oligos 1, 2, & 4) on CAF morphology compared to allstars control siRNA is shown. The long and short axis of >100 cells was measured for each condition (data pooled from two independent experiments, * indicates $p < 0.001$ Student's t-test). The long axis/short axis value is shown for each cell.