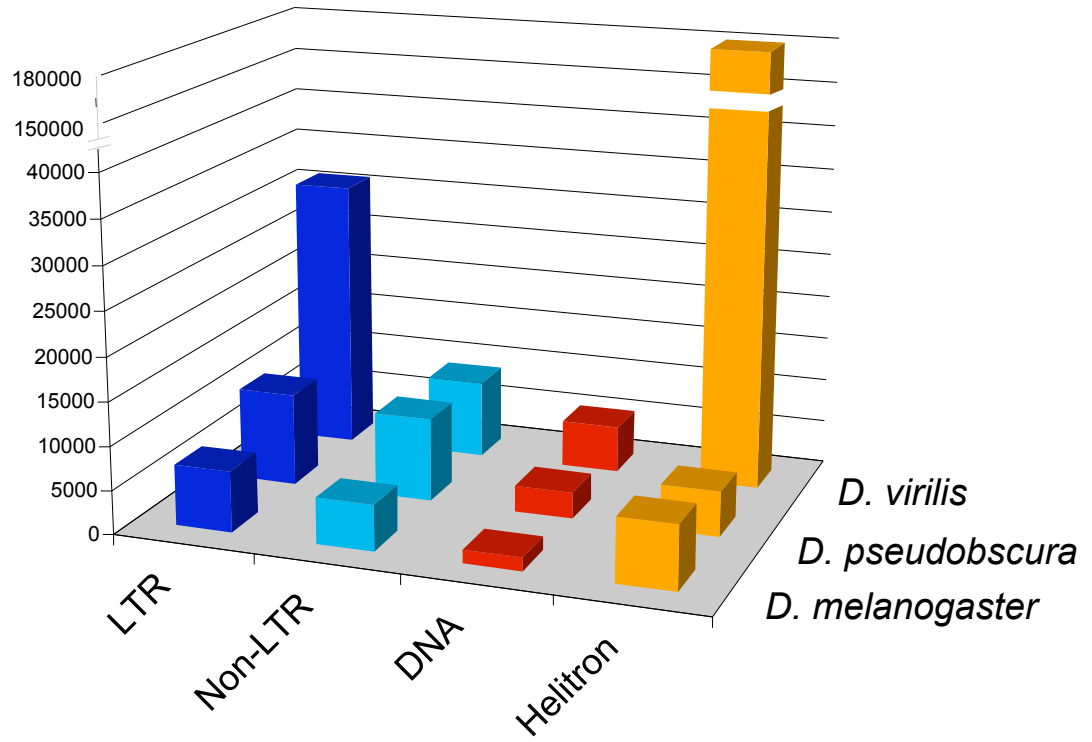
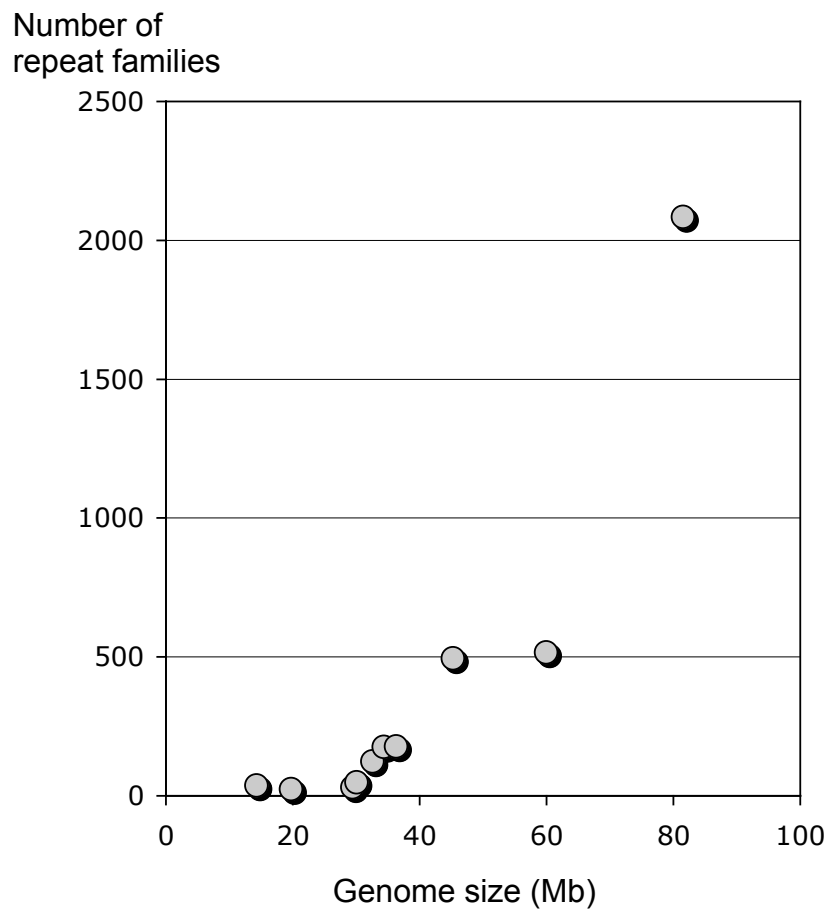


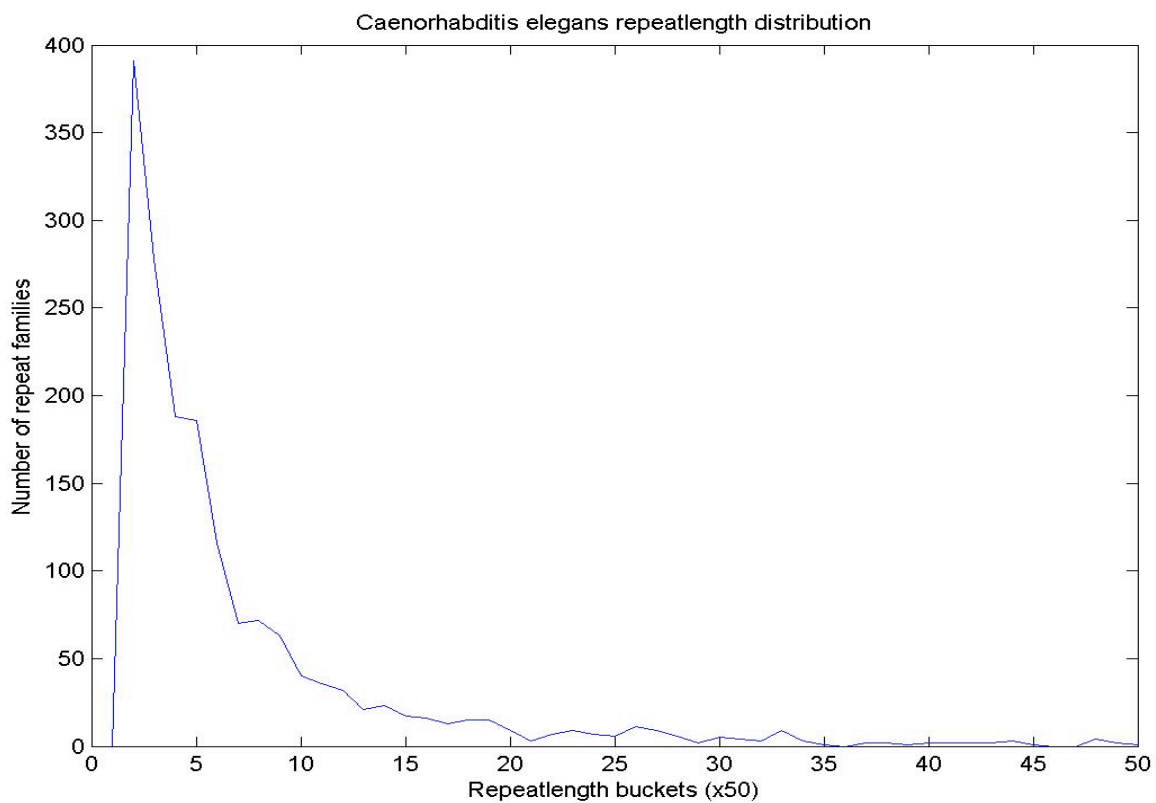
Supplemental Fig. 1: Copy number of TEs classified by RC for each subclass in the three *Caenorhabditis* species.



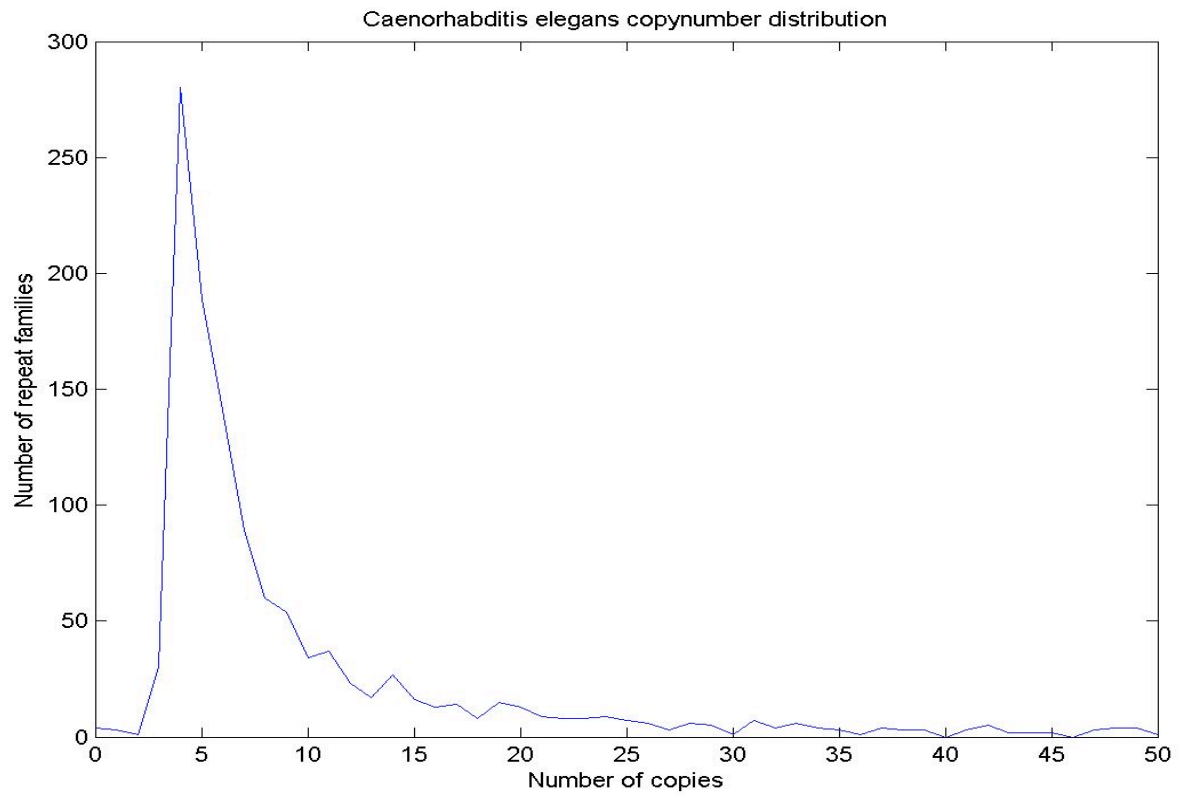
Supplemental Fig. 2: Copy number of TEs classified by RC for each subclass in the three *Drosophila* species.



Supplemental Fig. 3: Relationship between the number of repeat families identified by RepeatScout and genome size in fungi



Supplemental Fig. 4: Distribution of repeat length in the *C. elegans* unfiltered RS library.



Supplemental Fig. 5: Distribution of repeat copy number in the *C. elegans* unfiltered RS library.