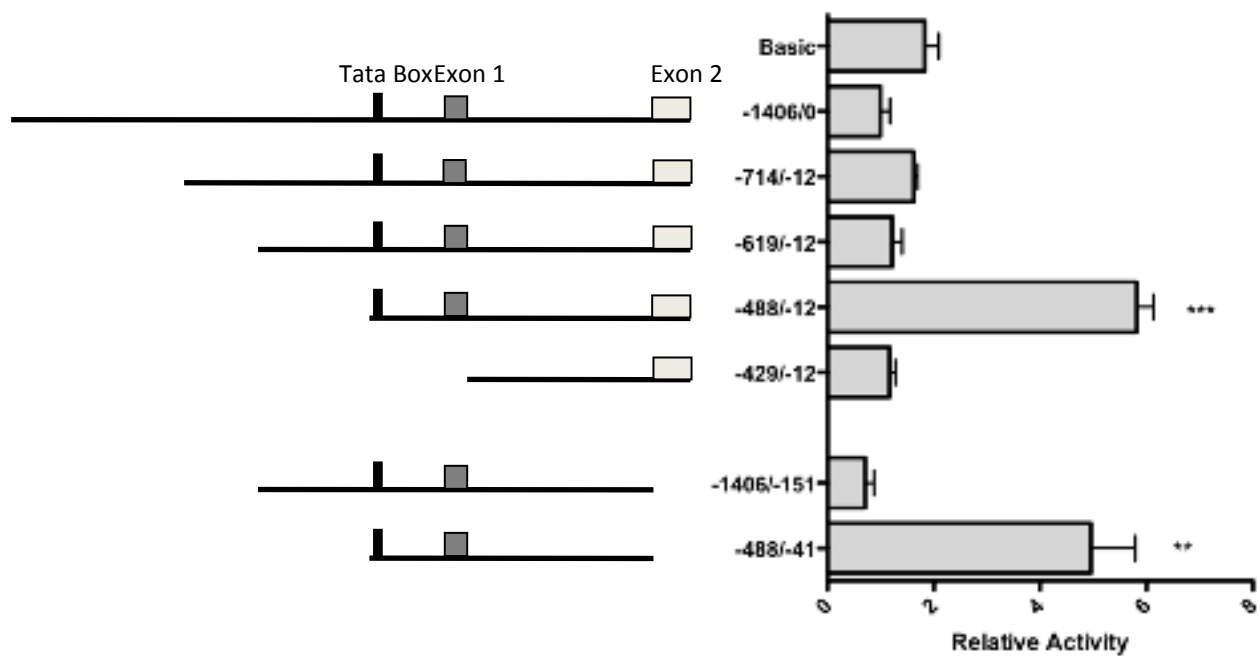


Supplemental Figure 1: Relative expression of mouse ghrelin promoter deletion constructs in  $\beta$ TC6 cells confirms de-repression pattern seen in  $\alpha$ TC1 cells. Constructs were cloned into the PGL3 luciferase reporter vector (Promega) and electroporated into  $\beta$ TC6 cells. The graph on the right shows the relative luciferase activity of each construct. Significance was determined by the unpaired student t-test (\*\*= $p < .01$ , \*\*\*= $p < .001$ ).

# Supplemental Figure 1



Supplemental Table 1: *In vivo* Analysis of Mouse Ghrelin Promoter

Transgene	Number of lines / total screened	Number of lines germline / number of lines	Number of lines express dsRed mRNA / total lines	Line number	e17.5* RT-PCR dsRed	P0* RT-PCR dsRed
pTimer1:[-1406/0]	4/37	4/4	2/4	2555 2574	S, I, P S, I, P	S, I, P S, I, P
pTimer1: pGhr[-714/-12]	4/22	2/4	1/2	9433	S, I, P	S, I, P
pTimer1: pGhr[-488/-12]	2/10	2/2	2/2	8646 8650	S, I, P S, I, P	S, I, P S, I, P
pTimer1: pGhr[-429/-12]	5/31	3/5	0/3	8993 8997 8975	None None None	None None None
pTimer1: pGhr[-488/-41]	3/14	1/2	0/1	9520	None	None

\*Detection dsRed-E5 mRNA by RT-PCR as described in materials and methods  
S = stomach, I = intestine, P = pancreas, and None = undetectable mRNA in all tissues.