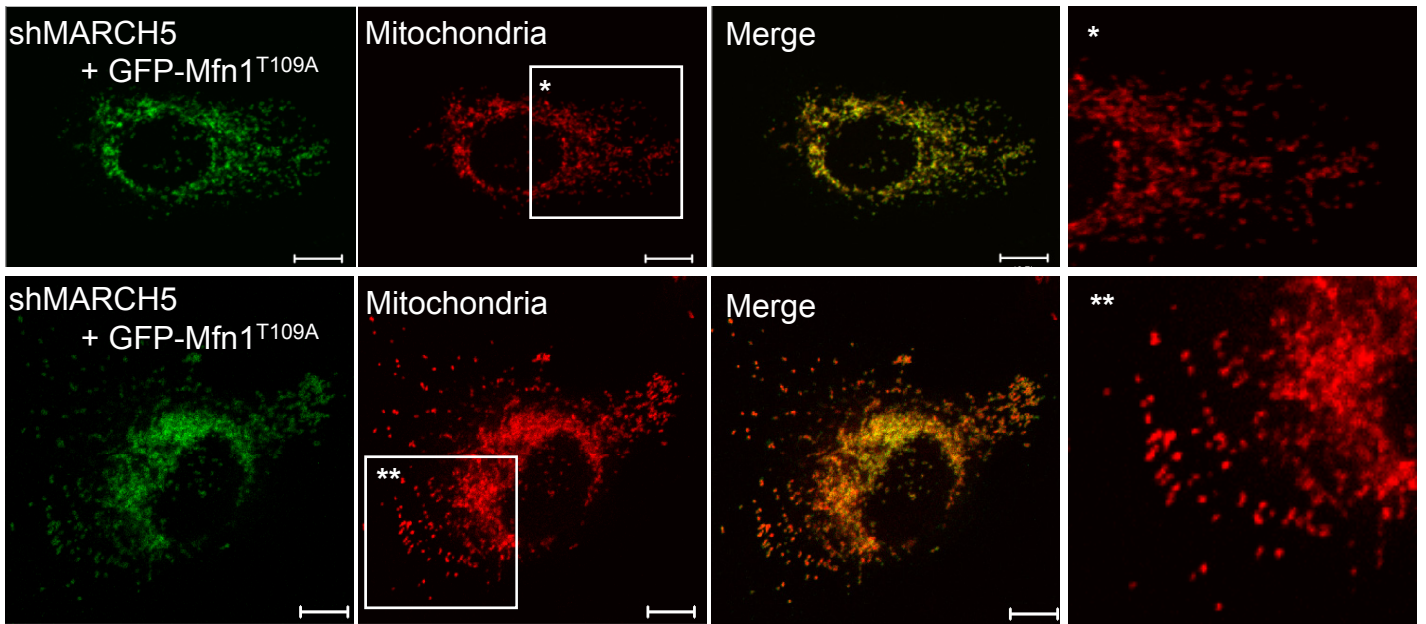


Supplementary Fig. 3



Ectopic expressions of Mfn1^{T109A} induces mitochondrial fragmentation in MARCH5 depleted cells.

The GFP-Mfn1^{T109A} expression vector was introduced into the MARCH5 depleted cells on day 2. After two days, cells were analyzed for the mitochondrial morphology after staining with MitoTracker Red under confocal microscopy. Scale bars represent 10 μ m.