

Supporting Information

Ramachandran et al. 10.1073/pnas.0913790107

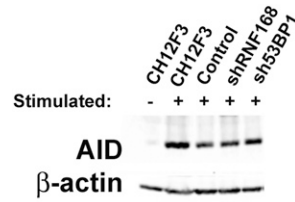


Fig. S1. AID expression is not affected by RNAi of CH12F3-2 cells. Control, shRNF168, and sh53BP1 CH12F3-2 cells were stimulated (+) and analyzed for AID expression by Western blot analysis using the mouse anti-AID antibody (Cell Signaling), with β -actin as the loading control. Unstimulated (-) and stimulated (+) parental CH12F3-2 cells (CH12F3) were the negative and positive controls, respectively.

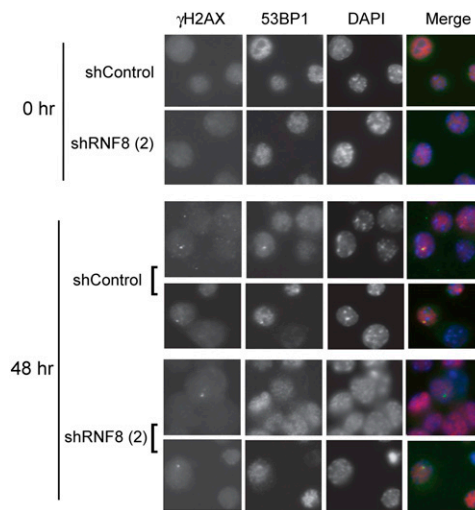


Fig. S2. 53BP1 foci formation is reduced in RNF8-knockdown clones. Control and shRNF8 CH12F3-2 cells were fixed and stained with the denoted antibodies and DAPI and then visualized by confocal microscopy. Stimulated control and shRNF8 CH12F3-2 cells were collected at 0 h (*Top*) and 48 h (*Bottom*). A representative sample of cells is shown in each panel. Apparent DAPI foci are most likely due to the high levels of heterochromatin in B cells.