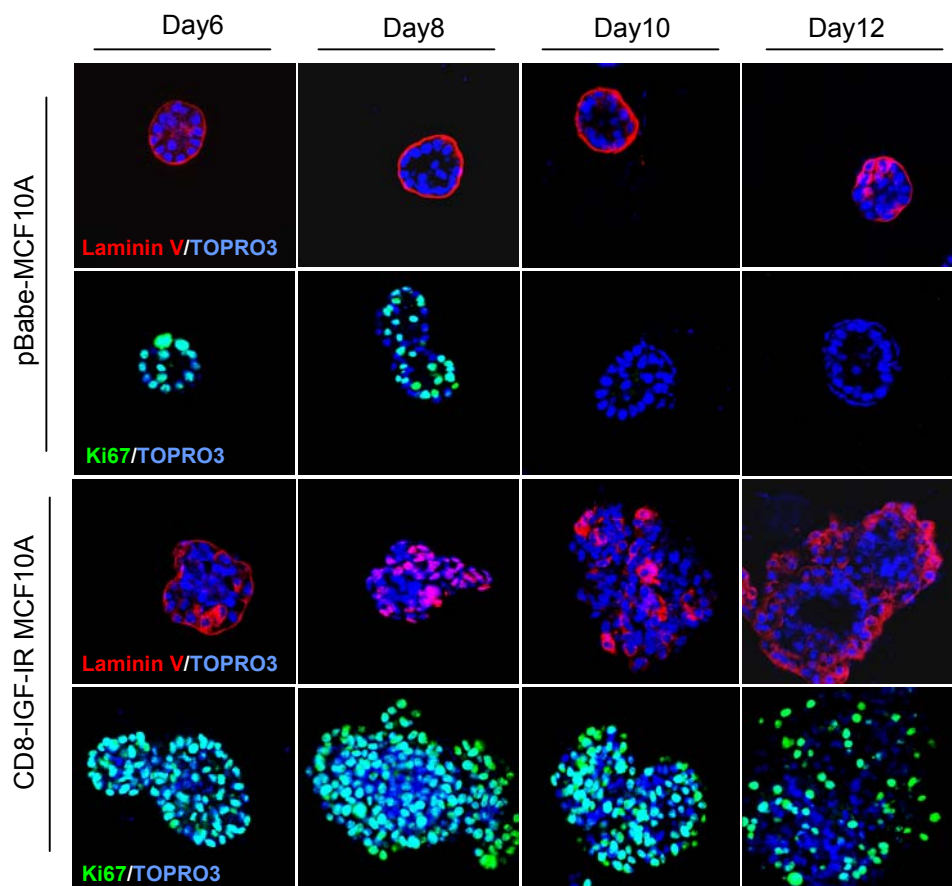


A.



Supplementary Figure 1

**Supplementary Figure 1. Constitutively activated IGF-IR disrupts acinar morphogenesis of MCF10A cells in 3D Matrigel™ culture.** pBabe-MCF10A and CD8-IGF-IR-MCF10A cells were plated in Matrigel™ and cultured for the indicated number of days, and immunostained with antibodies against Ki67 (green) or laminin V (red). Nuclei were counterstained with To-Pro3. Confocal microscopy visualized cross-sections through the middle of the acini with 40x magnification. Pictures show representative acini.