

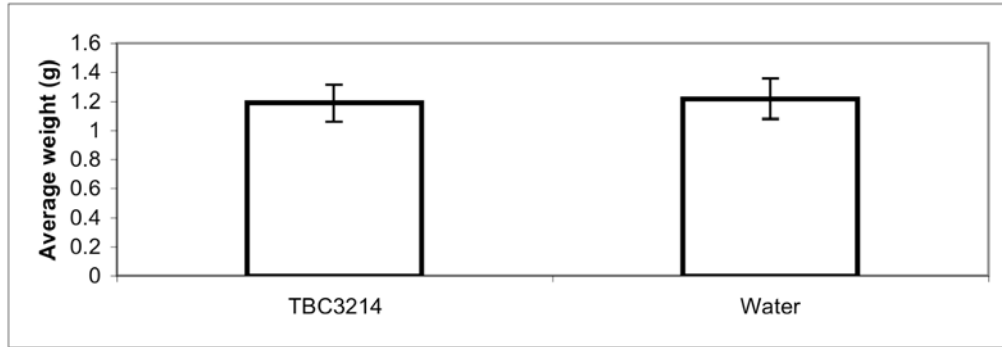
Supplemental Table 1. Incidence of jaw defects following antagonist treatment

Structure	E8.0	E8.0/E8.5	E8.5	E8.5/9.0	E9.0
<i>Arch 1</i>					
mandible	0.0 +/- 0.0	44.3 +/- 21.2	14.0 +/- 6.1	91.4 +/- 5.7	91.9 +/- 7.8
Meckel's	0.0 +/- 0.0	28.1 +/- 24.1	7.0 +/- 5.2	100.0 +/- 0.0	89.2 +/- 5.1
Malleus	0.0 +/- 0.0	55.8 +/- 12.7	11.3 +/- 4.5	88.6 +/- 11.4	86.5 +/- 15.6
Tympanic	0.0 +/- 0.0	41.2 +/- 19.9	17.8 +/- 5.1	94.3 +/- 3.5	89.2 +/- 3.7
Gonial	4.8 +/- 4.8	83.3 +/- 11.8	48.4 +/- 8.1	94.3 +/- 3.5	97.3 +/- 4.0
Incus	0.0 +/- 0.0	49.6 +/- 14.9	14.1 +/- 5.6	100.0 +/- 0.0	97.3 +/- 2.5
Pterygoid	4.8 +/- 4.8	83.3 +/- 11.8	44.3 +/- 10.9	100.0 +/- 0.0	100.0 +/- 0.0
Alisphenoid	0.0 +/- 0.0	62.5 +/- 23.9	27.3 +/- 9.8	100.0 +/- 0.0	97.3 +/- 2.5
Squamosal	0.0 +/- 0.0	46.0 +/- 15.9	6.2 +/- 2.2	94.6 +/- 3.3	75.7 +/- 10.6
Palatine	4.8 +/- 4.8	69.8 +/- 20.7	28.0 +/- 9.5	97.8 +/- 2.2	83.8 +/- 6.7
Strut	9.5 +/- 9.5	83.3 +/- 11.8	53.3 +/- 9.5	100.0 +/- 0.0	100.0 +/- 0.0
<i>Arch 2, 3, 4</i>					
hyoid, l. horns	0.0 +/- 0.0	28.1 +/- 24.1	3.6 +/- 3.6	88.6 +/- 8.3	81.1 +/- 14.6
stapes	0.0 +/- 0.0	0.0 +/- 0.0	0.0 +/- 0.0	29.2 +/- 15.1	13.5 +/- 4.0
styloid	0.0 +/- 0.0	14.3 +/- 14.3	1.8 +/- 1.8	97.1 +/- 2.9	75.7 +/- 9.7
hyoid g. horns	0.0 +/- 0.0	0.0 +/- 0.0	5.4 +/- 3.7	85.7 +/- 11.1	73.0 +/- 16.6
thyroid cartilage	0.0 +/- 0.0	0.0 +/- 0.0	1.8 +/- 1.8	41.3 +/- 19.9	24.3 +/- 7.4
Structure	E9.0/9.5	E9.5	E9.5/E10.0	E10.0	
<i>Arch 1</i>					
mandible	89.2 +/- 4.5	0.0 +/- 0.0	0.0 +/- 0.0	0.0 +/- 0.0	
Meckel's	79.4 +/- 10.8	0.0 +/- 0.0	0.0 +/- 0.0	0.0 +/- 0.0	
Malleus	88.9 +/- 11.1	0.0 +/- 0.0	0.0 +/- 0.0	0.0 +/- 0.0	
Tympanic	91.9 +/- 2.7	1.4 +/- 1.4	0.0 +/- 0.0	0.0 +/- 0.0	
Gonial	91.7 +/- 5.3	0.0 +/- 0.0	20.0 +/- 20.0	0.0 +/- 0.0	
Incus	83.3 +/- 13.2	0.0 +/- 0.0	0.0 +/- 0.0	0.0 +/- 0.0	
Pterygoid	97.2 +/- 2.8	3.8 +/- 2.6	13.3 +/- 13.3	3.7 +/- 3.7	
Alisphenoid	97.2 +/- 2.8	0.0 +/- 0.0	0.0 +/- 0.0	0.0 +/- 0.0	
Squamosal	79.7 +/- 9.2	0.0 +/- 0.0	0.0 +/- 0.0	0.0 +/- 0.0	
Palatine	80.8 +/- 8.4	0.0 +/- 0.0	0.0 +/- 0.0	0.0 +/- 0.0	
Strut	97.2 +/- 2.8	9.0 +/- 4.6	37.0 +/- 31.6	3.7 +/- 3.7	
<i>Arch 2, 3, 4</i>					
hyoid, l. horns	94.4 +/- 5.6	0.0 +/- 0.0	0.0 +/- 0.0	0.0 +/- 0.0	
stapes	36.4 +/- 5.8	0.0 +/- 0.0	0.0 +/- 0.0	0.0 +/- 0.0	
styloid	91.9 +/- 5.3	0.0 +/- 0.0	0.0 +/- 0.0	0.0 +/- 0.0	
hyoid g. horns	80.6 +/- 19.4	2.9 +/- 2.9	0.0 +/- 0.0	0.0 +/- 0.0	
thyroid cartilage	47.5 +/- 19.6	7.9 +/- 2.9	0.0 +/- 0.0	0.0 +/- 0.0	

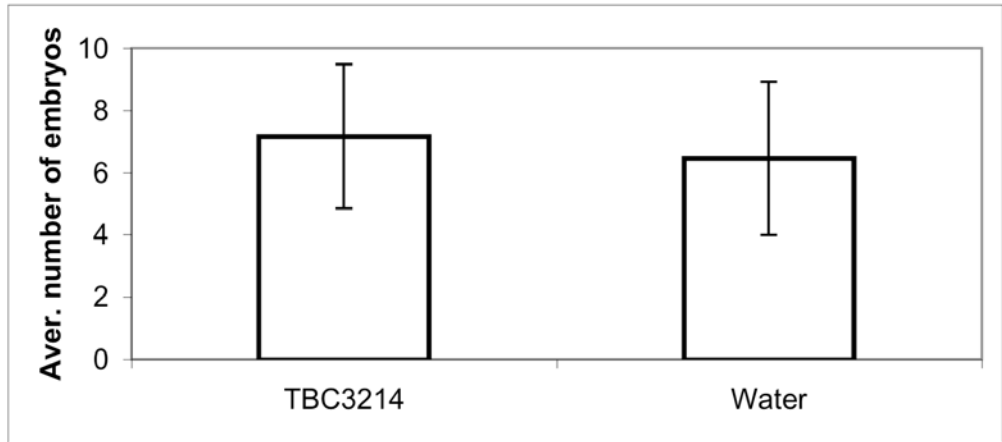
The numbers represent the average ratio (in %) of embryos having a specific structural defect within a litter. The error represents the standard deviation from the average of these ratios for each analyzed structure.

Supplemental Figure 1

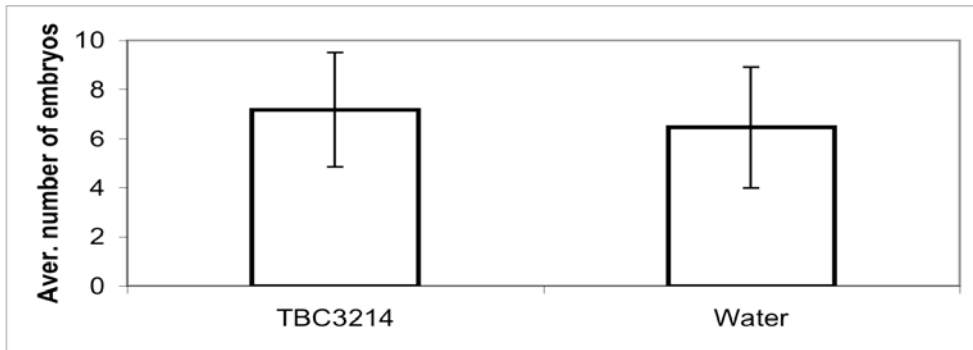
A



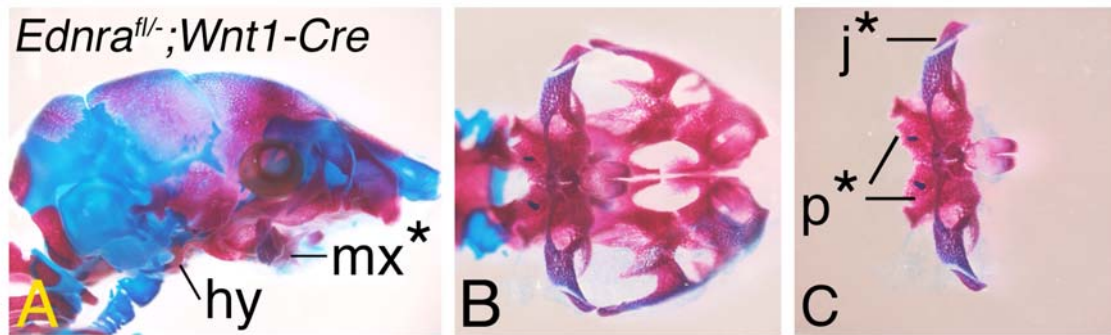
B



C



Supplemental Figure 2



Supplemental Figure 3

