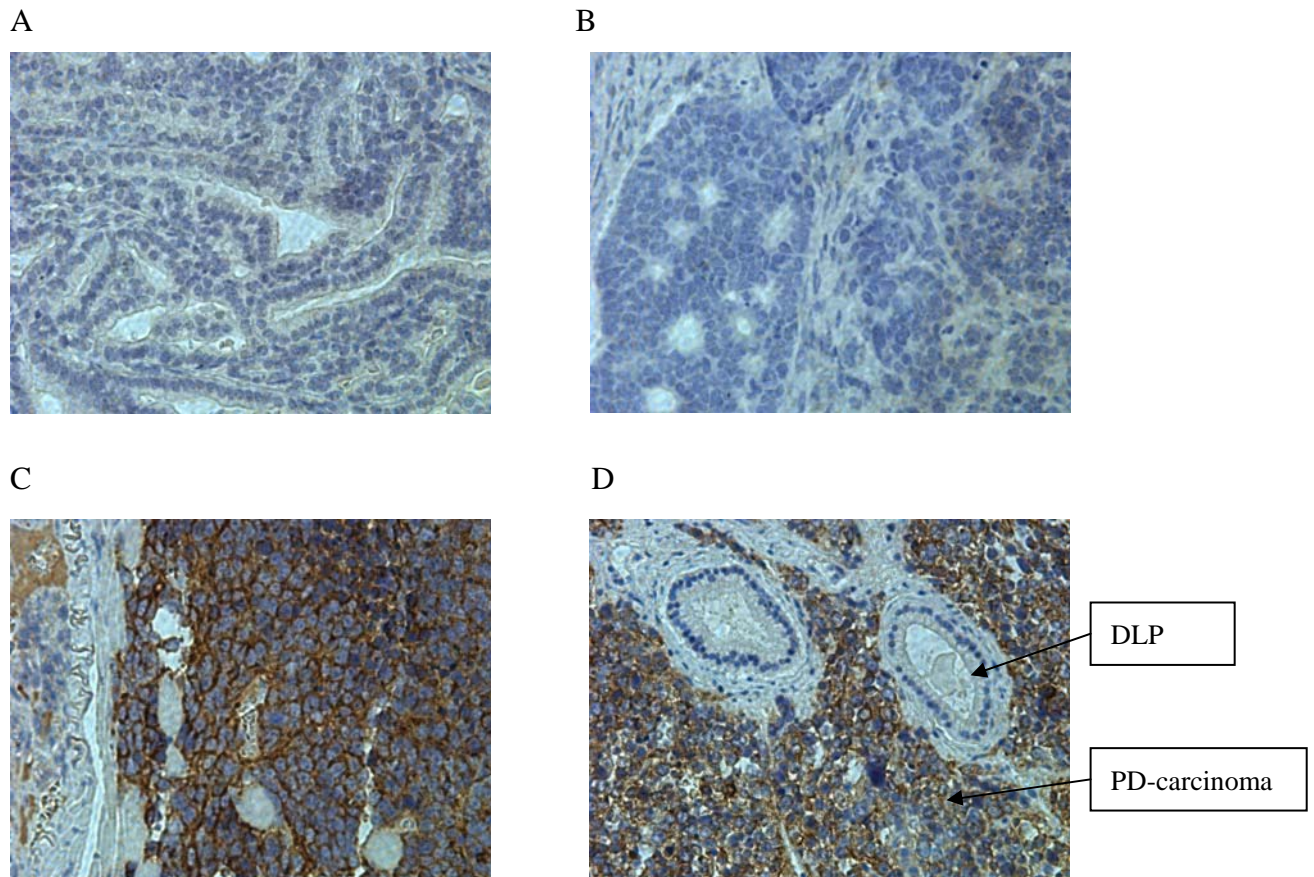


Figure S1 Wang et al

Synaptophysin staining patterns (dark brown) in dorsolateral prostate lesions and carcinomas (Hematoxylin counterstain, nuclear, blue)



A. DL-prostate tissue from mouse No. 546 in 10_wk MSeA group. Euthanized at 50 weeks of age. $\times 400$. Classified as synaptophysin (-).

B. DL-prostate tissue in mouse No. 425 in 16_wk MSeA group. Euthanized at 50 weeks of age. $\times 400$. Classified as synaptophysin (-).

C. Prostate carcinoma from mouse No. 483 in control group. Euthanized at 26 weeks of age. $\times 400$. Classified as synaptophysin (+++).

D. Prostate carcinoma from mouse No. 499 in control group. Euthanized at 28 weeks of age. $\times 200$. Classification: Carcinoma area, synaptophysin (+++); trapped DLP, synaptophysin (-).