

Figure P1. Representative gene expression patterns and annotations for *I8w*. (A) Stage 10A: $A+U$. (B) Stage 10B, dorsal view: $A \cup D \setminus R$. (C) Stage 10B, lateral view: $A \cup D \setminus R$. (D) Stage 11, dorsal view: $A \cup D \setminus R$. (E) Stage 11, lateral view: $A \cup D \setminus R$. (F) Stage 12: $A \cup M$.

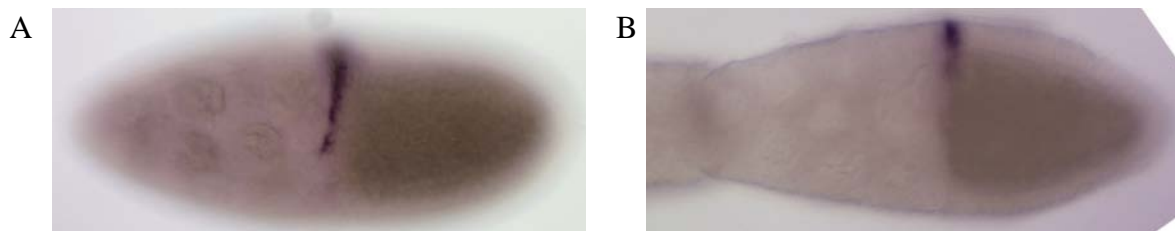


Figure P2. Representative gene expression patterns and annotations for *ana*. (A) Stage 10A: $A \cap D$. (B) Stage 10B: $A \cap D$.

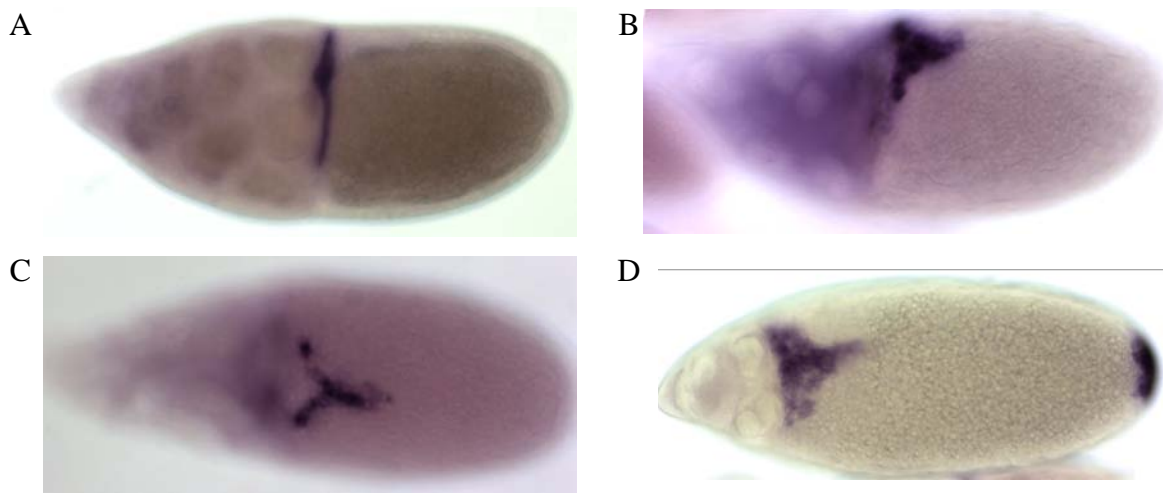


Figure P3. Representative gene expression patterns and annotations for *argos*. (A) Stage 10B: A∩D. (B) Stage 11, lateral view: M. (C) Stage 11, dorsal view: M (D) Stage 12: M.

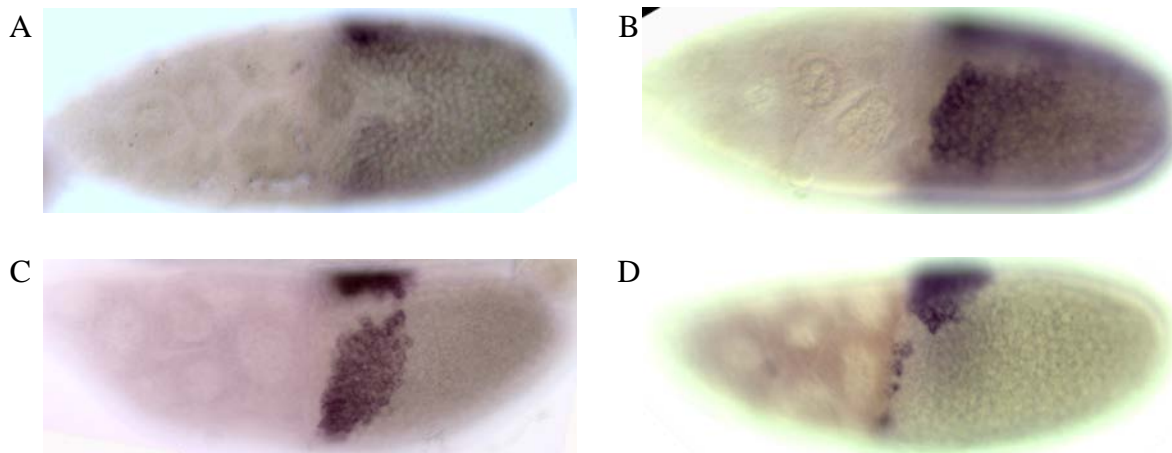


Figure P4. Representative gene expression patterns and annotations for *br*. (A) Stage 10A, dorsal view: U\M. (B) Stage 10A, lateral view: U\M. (C) Stage 10B, dorsal view: A∩D∪R. (D) Stage 10B, lateral view: A∩D∪R.

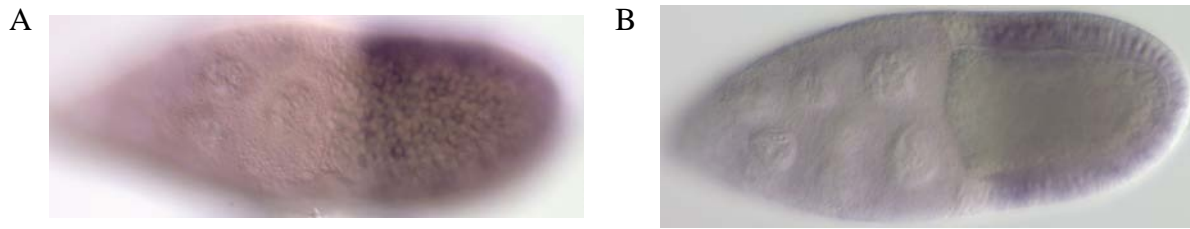


Figure P5. Representative gene expression patterns and annotations for *brk*. (A) Stage 10A: U\A. (B) Stage 10B: U\A.

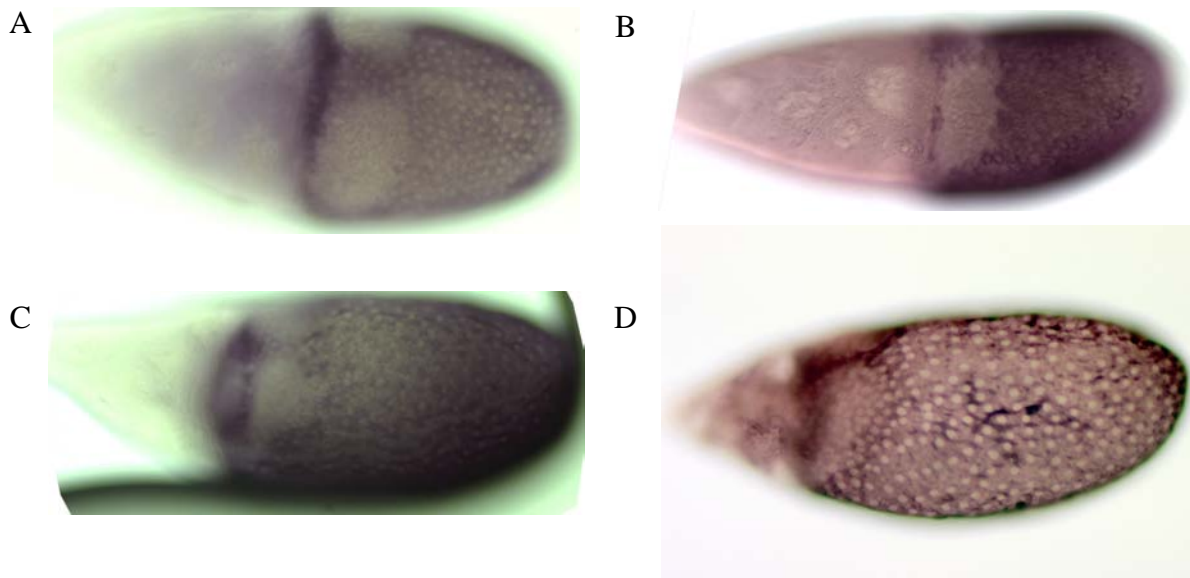


Figure P6. Representative gene expression patterns and annotations for *Cad74A*. (A) Stage 10B, dorsal view: U\R. (B) Stage 10B, lateral view: U\R. (C) Stage 11: U\R. (D) Stage 12: U\R.

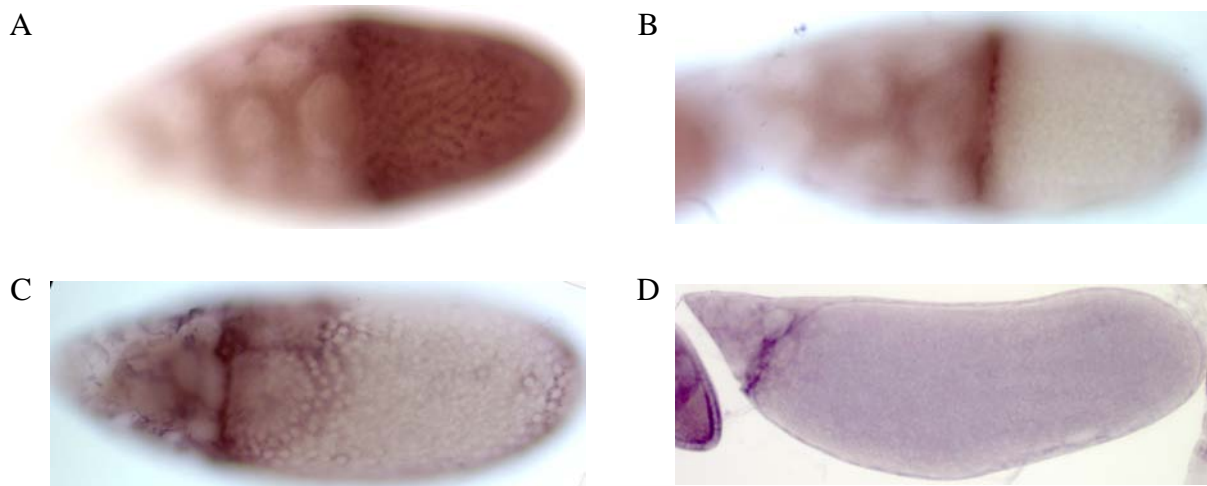


Figure P7. Representative gene expression patterns and annotations for *Cad99C*. (A) Stage 10A: U. (B) Stage 10B: A. (C) Stage 11: $A \cup D \setminus R$. (D) Stage 12: $A \setminus D$.

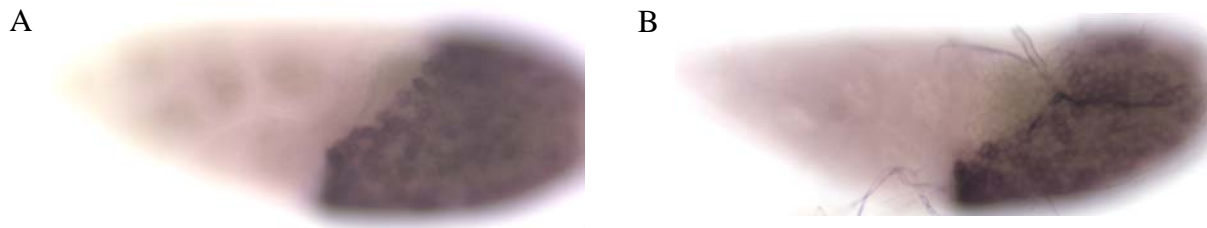


Figure P8. Representative gene expression patterns and annotations for *CG2052*. (A) Stage 10A: $U \setminus D$. (B) Stage 10B: $U \setminus D$.

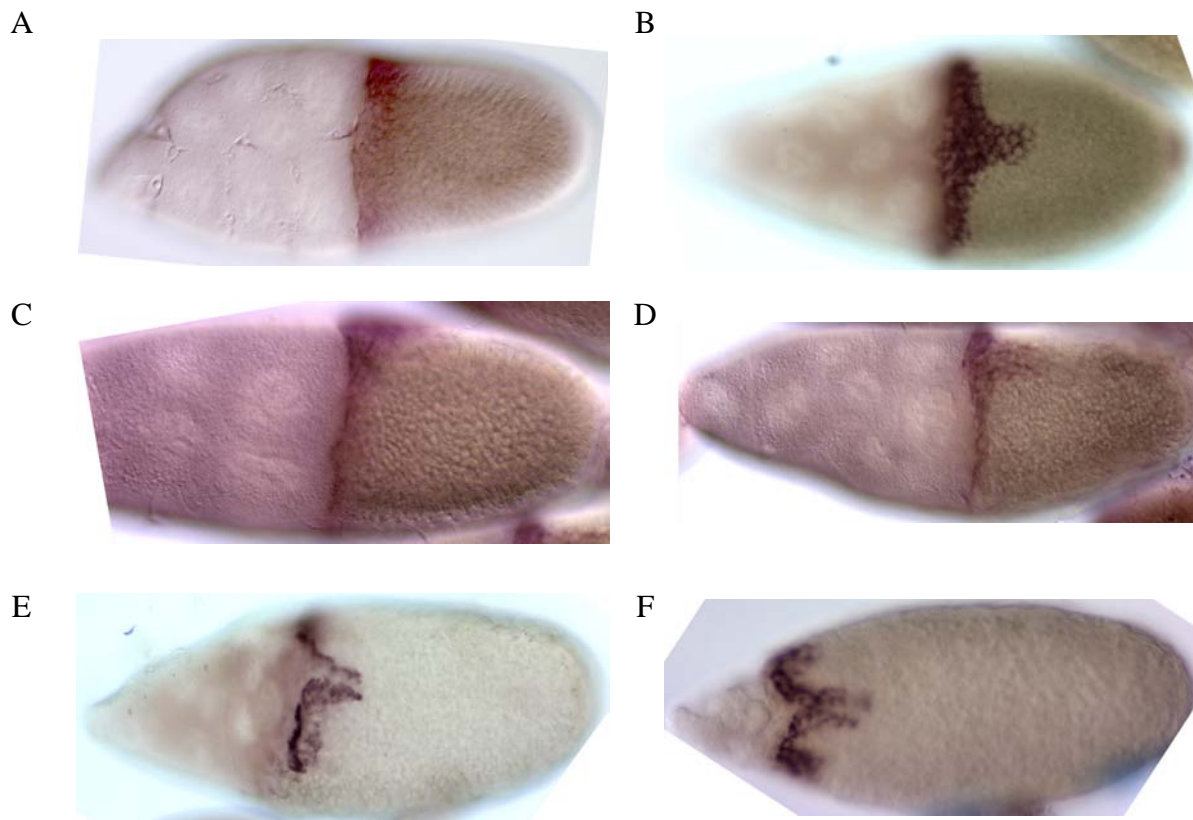


Figure P9. Representative gene expression patterns and annotations for *CG3074*. (A) Stage 10A: A. (B) Stage 10B, dorsal view: A∪M. (C) Stage 10B, lateral view: A∪M. (D) Stage 10B, lateral view: A∪M. (E) Stage 11: F. (F) Stage 12: F.

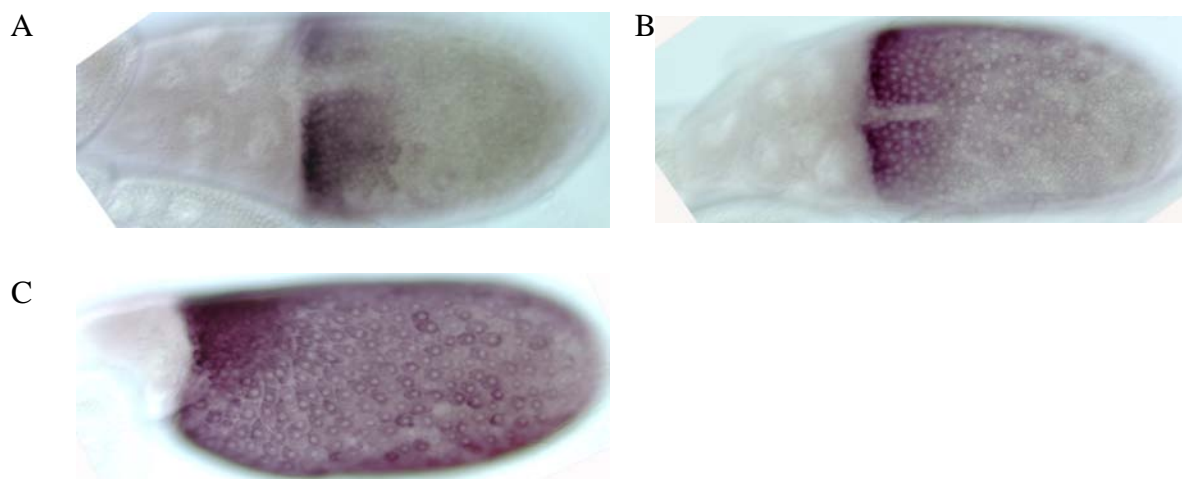


Figure P10. Representative gene expression patterns and annotations for *CG4009*. (A) Stage 10B: D\M. (B) Stage 11: D\M. (C) Stage 12: D+U.

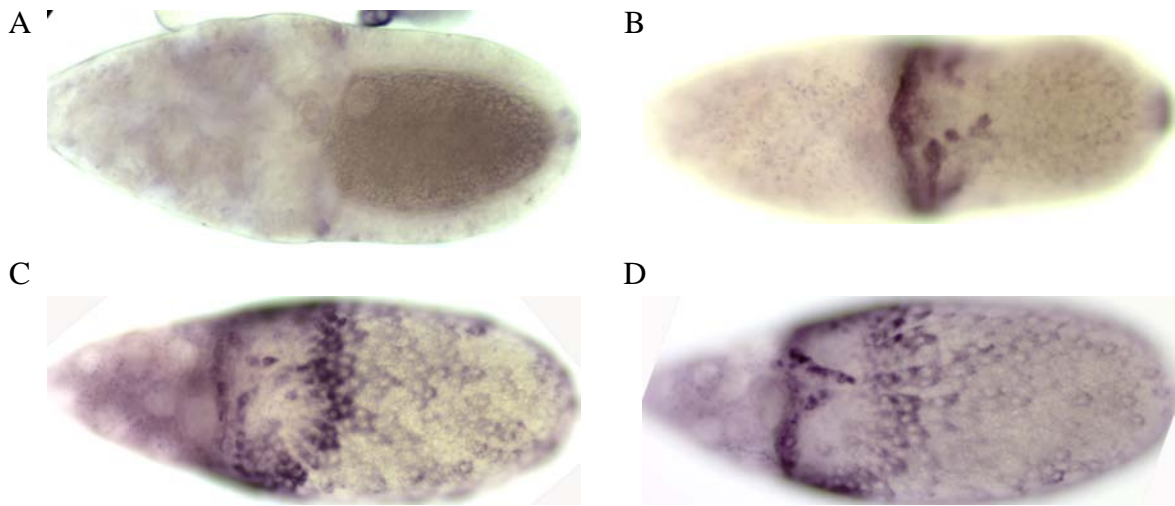


Figure P11. Representative gene expression patterns and annotations for *CG4998*. (A) Stage 10A: A. (B) Stage 10B: $A \cup D \setminus (M \cup R)$. (C) Stage 11: $A \cup D \setminus (M \cup R)$. (D) Stage 12: $A \cup D \setminus (M \cup R)$.

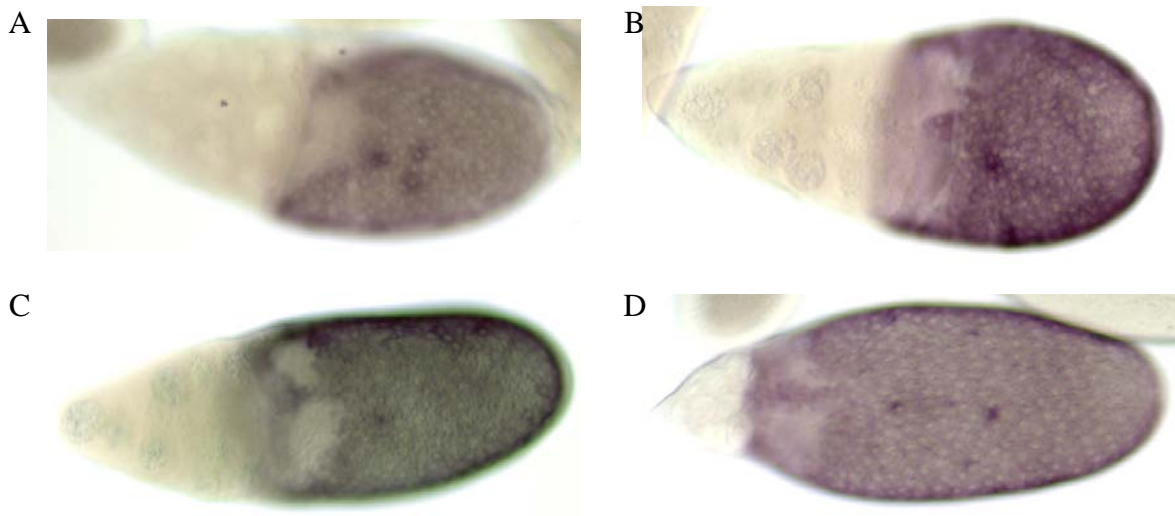


Figure P12. Representative gene expression patterns and annotations for *CG11381*. (A) Stage 10A: $M \cup U \setminus D$. (B) Stage 10B: $M \cup U \setminus D$. (C) Stage 11: $M \cup U \setminus D$. (D) Stage 12: $M \cup U \setminus D$.

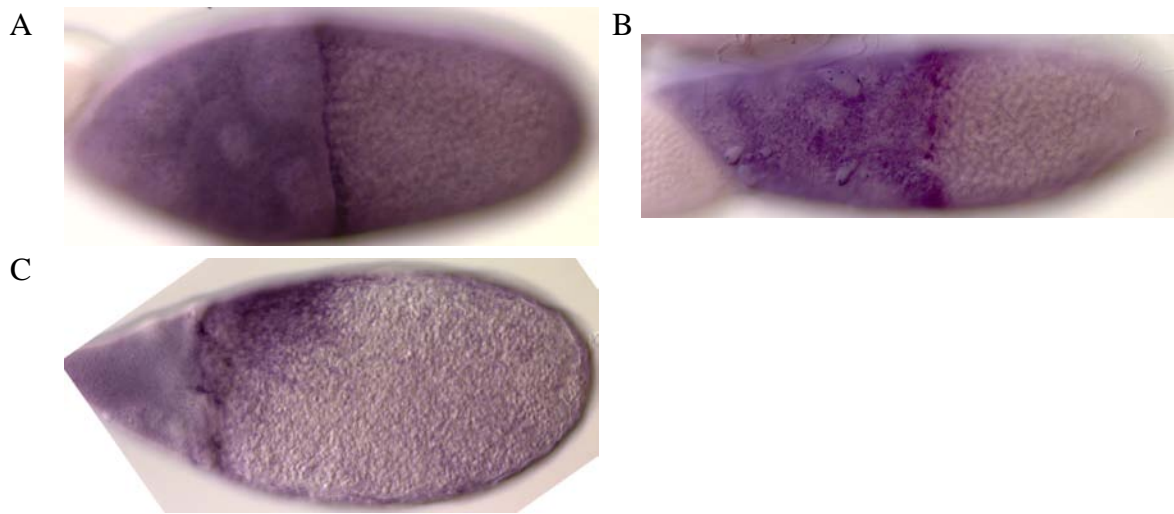


Figure P13. Representative gene expression patterns and annotations for *CG11880*. (A) Stage 10A: A. (B) Stage 10B: A. (C) Stage 12: $A \cup D$.

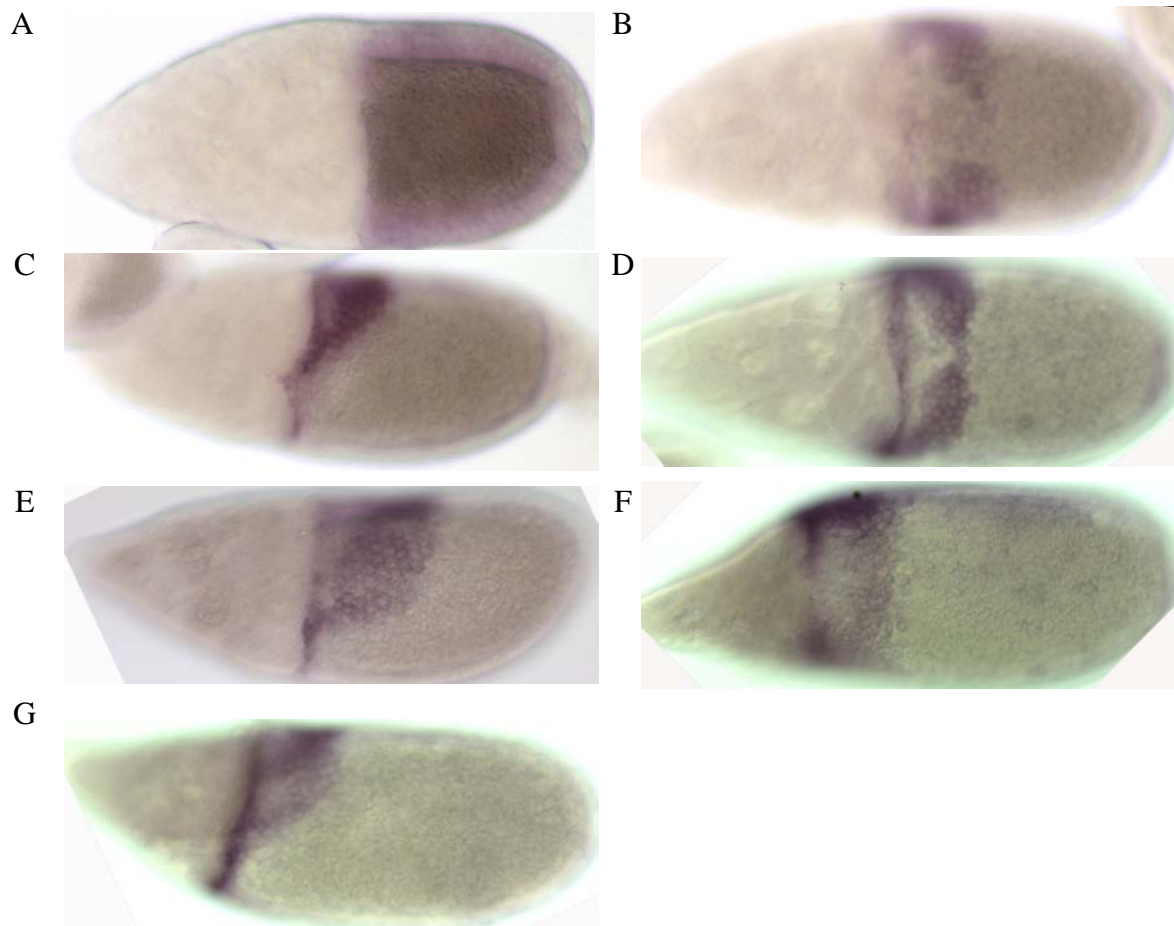


Figure P14. Representative gene expression patterns and annotations for *CG12068*. (A) Stage 10A: U. (B) Stage 10B, dorsal view: $(A \cup D) \setminus M$. (C) Stage 10B, lateral view: $(A \cup D) \setminus M$. (D) Stage 11, dorsal view: $A \cup D \setminus F$. (E) Stage 11, lateral view: $A \cup D \setminus F$. (F) Stage 12, dorsal view: $(A \cup D) \setminus M$. (G) Stage 12, lateral view: $(A \cup D) \setminus M$.

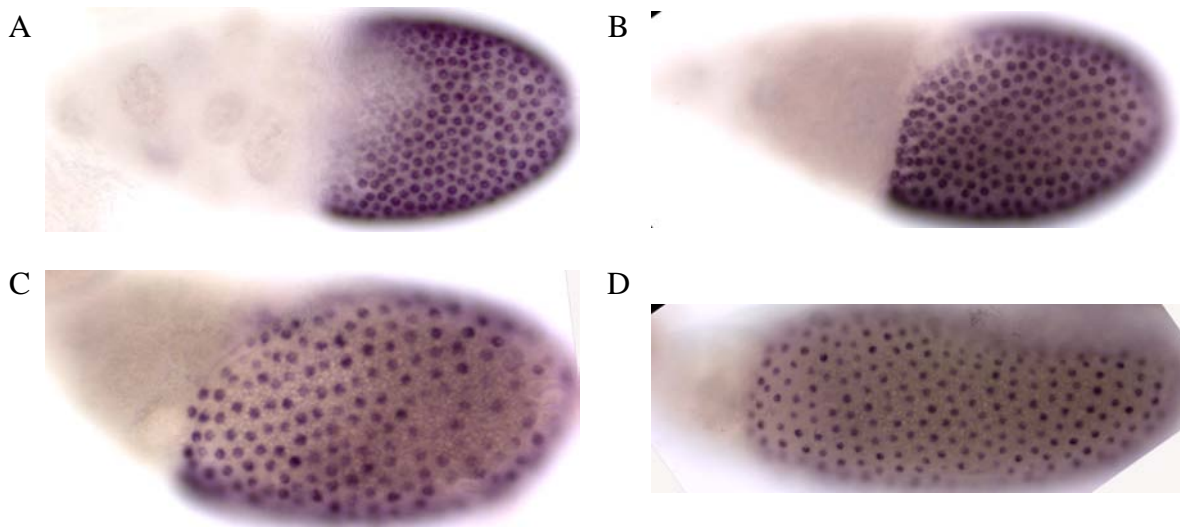


Figure P15. Representative gene expression patterns and annotations for *CG15324*. (A) Stage 10B, dorsal view: U\M. (B) Stage 10B, lateral view: U\M. (C) Stage 11: U. (D) Stage 12: U.

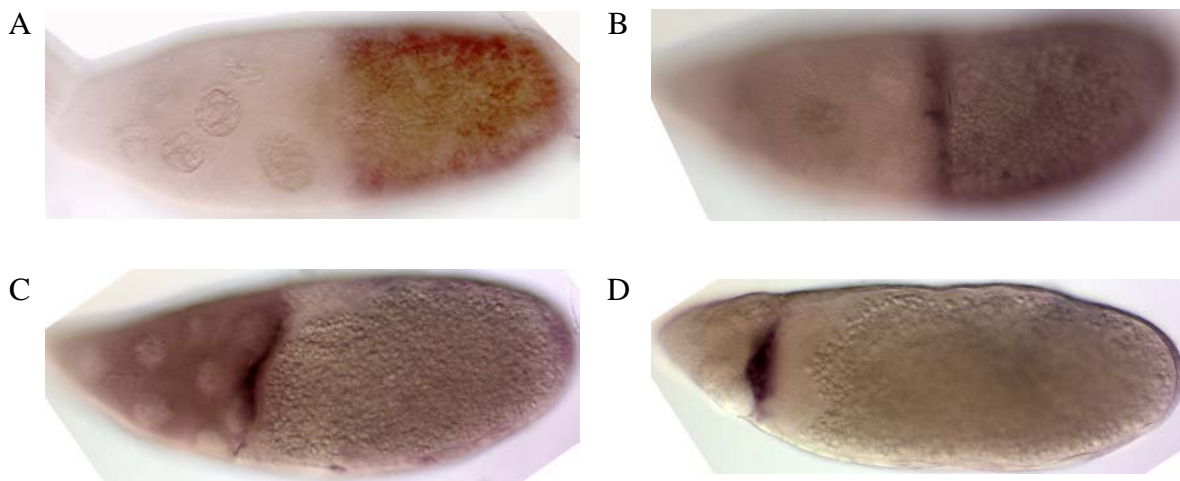


Figure P16. Representative gene expression patterns and annotations for *CG31522*. (A) Stage 10A: U. (B) Stage 10B: A+U. (C) Stage 11: A. (D) Stage 12: A.

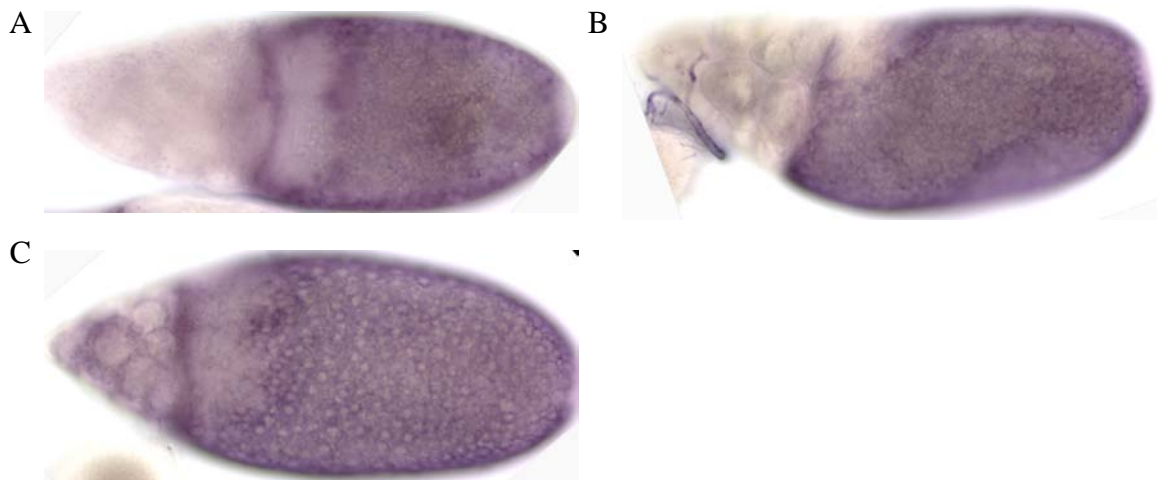


Figure P17. Representative gene expression patterns and annotations for *CG31900*. (A) Stage 11, dorsal view: A∪U\D. (B) Stage 11, lateral view: A∪U\D (C) Stage 12: A∪U\D.

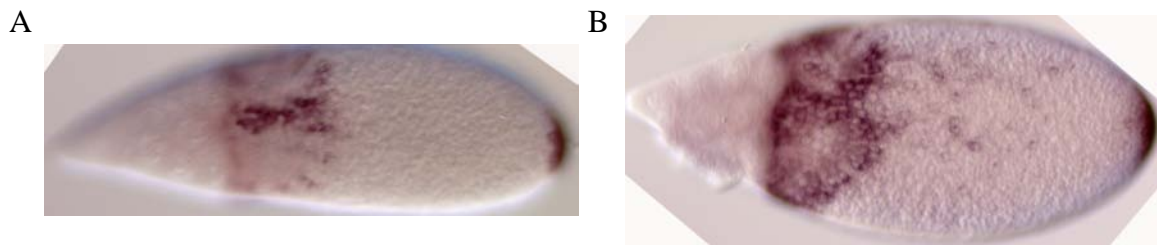


Figure P18. Representative gene expression patterns and annotations for *CG32774*. (A) Stage 11: D\R. (B) Stage 12: D\R.

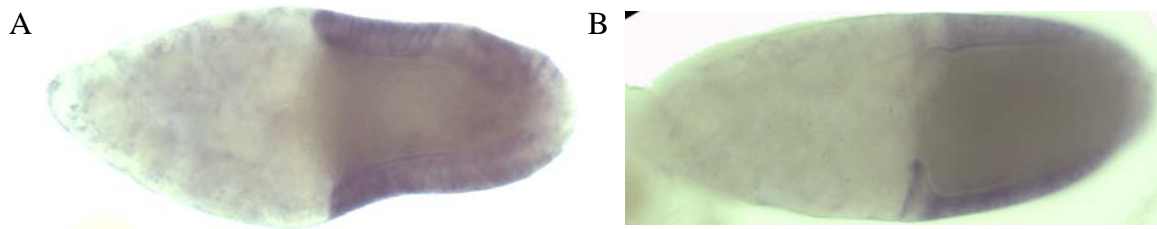


Figure P19. Representative gene expression patterns and annotations for *CG33099*. (A) Stage 10A: U. (B) Stage 10B: A\D∪U\A.

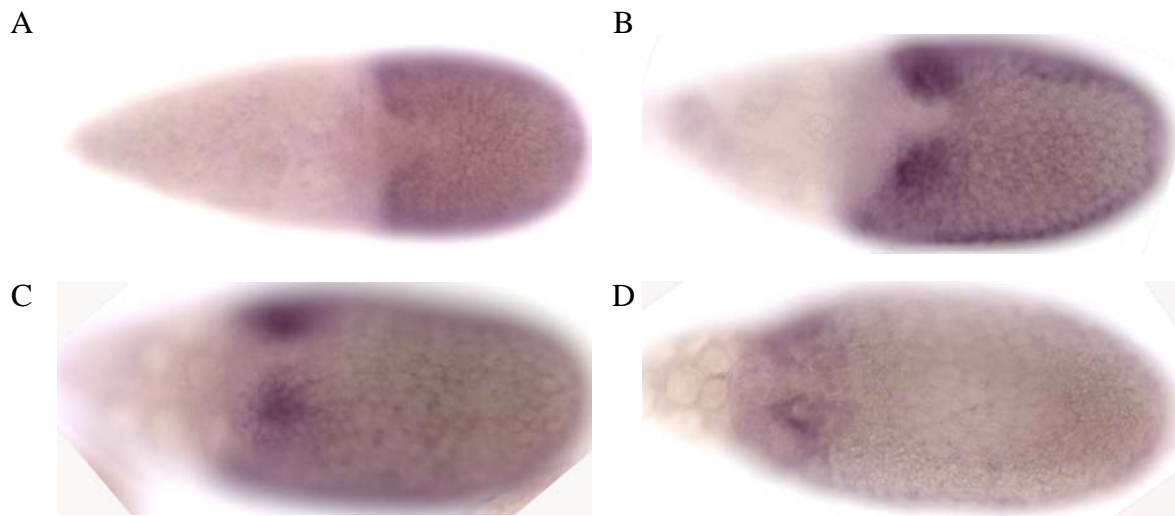


Figure P20. Representative gene expression patterns and annotations for *CG34417*. (A) Stage 10A: U\M. (B) Stage 10B: U\M+R. (C) Stage 11: U\M+R. (D) Stage 12: R.

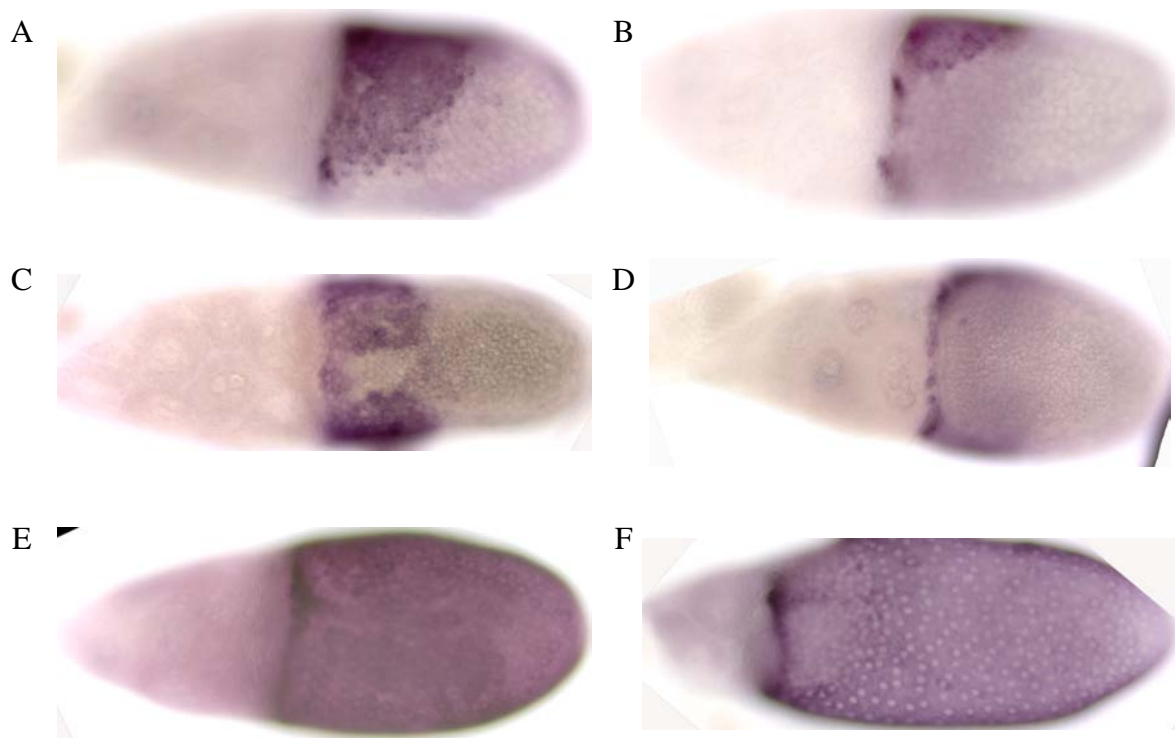


Figure P21. Representative gene expression patterns and annotations for *Cp7Fb*. (A) Stage 10A, lateral view: A\cup D. (B) Stage 10A, lateral view: A\cup D. (C) Stage 10B, dorsal view: A\cup R. (D) Stage 10B, ventral view: A\cup R. (E) Stage 11: U\F. (F) Stage 12: U\R.

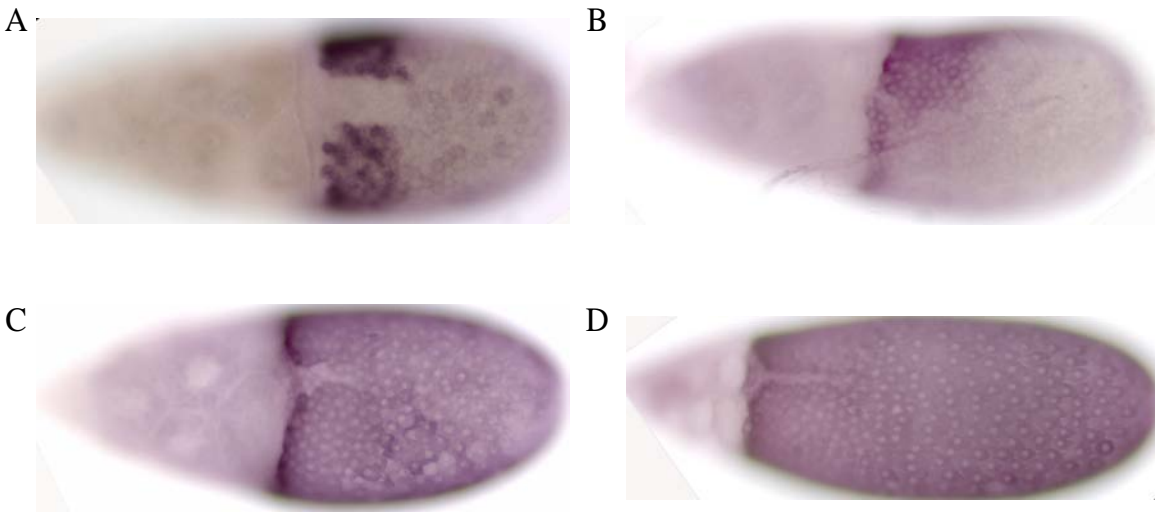


Figure P22. Representative gene expression patterns and annotations for *Cp7Fc*. (A) Stage 10B, dorsal view, $(A \cup D) \setminus M$ (B) Stage 10B, lateral view, $(A \cup D) \setminus M$ (C) Stage 12, $(A+U) \setminus M$. (D) Stage 12, $(A+U) \setminus M$.

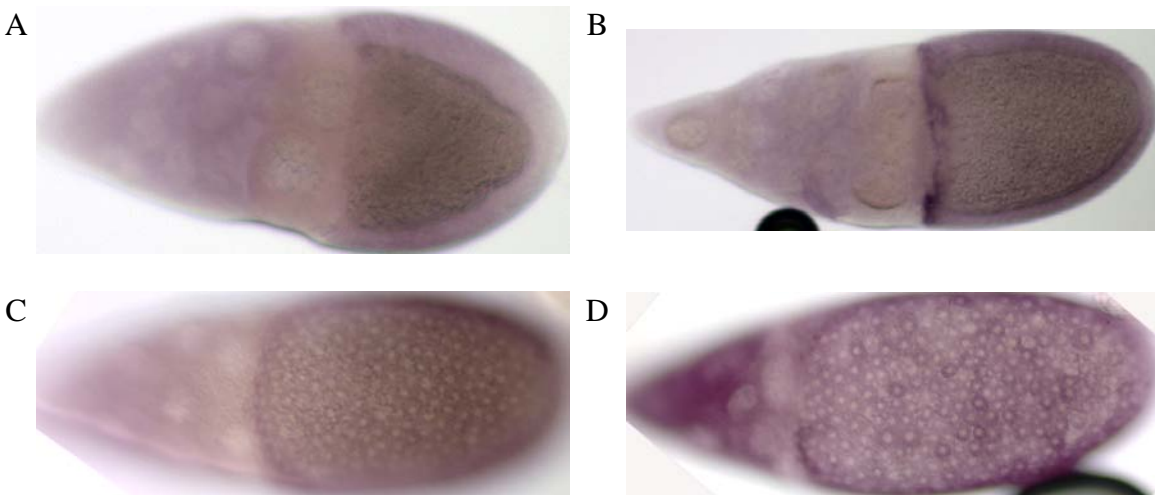


Figure P23. Representative gene expression patterns and annotations for *Cp15*. (A) Stage 10A: U. (B) Stage 10B: A+U. (C) Stage 11: U. (D) Stage 12: U.

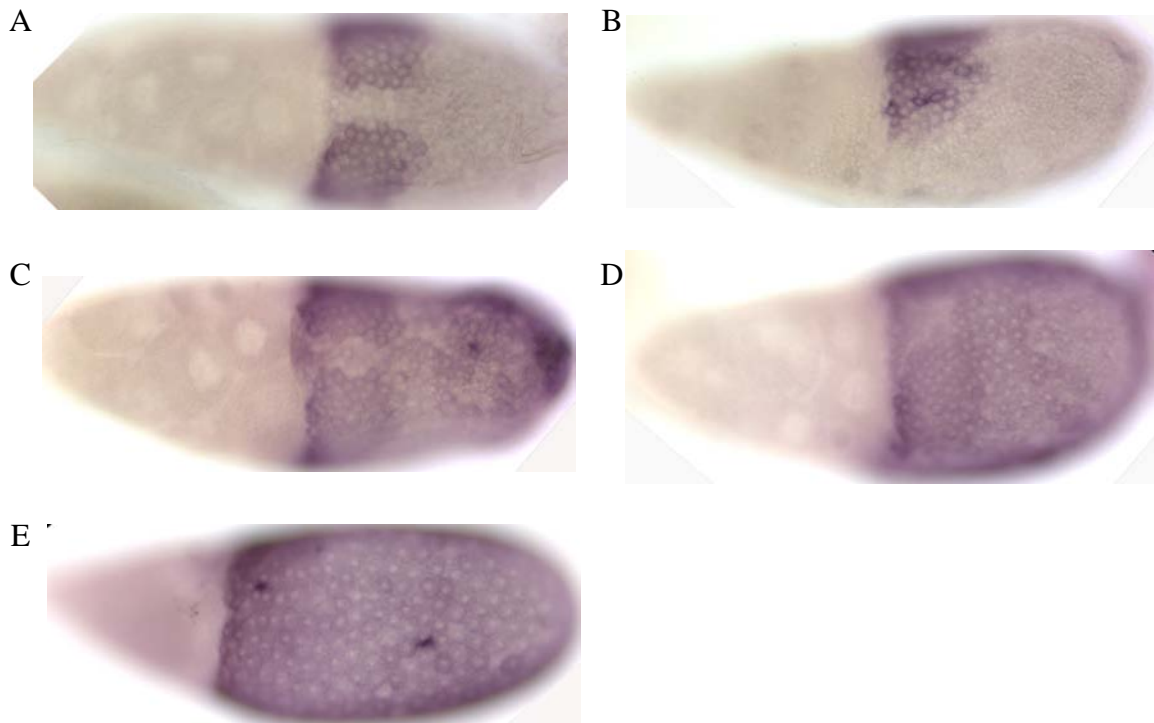


Figure P24. Representative gene expression patterns and annotations for *Cp38*. (A) Stage 10B, dorsal view: D\M. (B) Stage 10B, lateral view: D\M. (C) Stage 11: (A+U)\M. (D) Stage 11: (A+U)\M. (E) Stage 12: U.

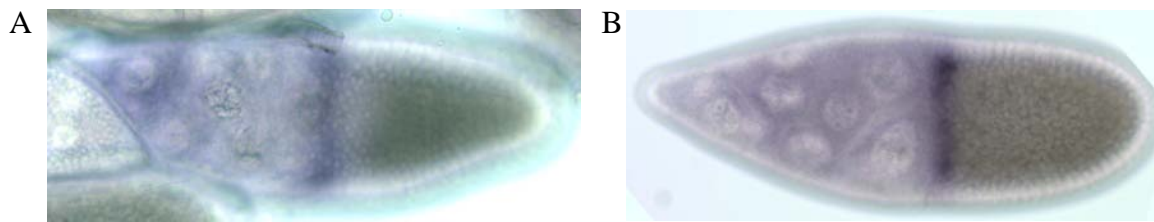


Figure P25. Representative gene expression patterns and annotations for *Dad*. (A) Stage 10A: A. (B) Stage 10B: A.

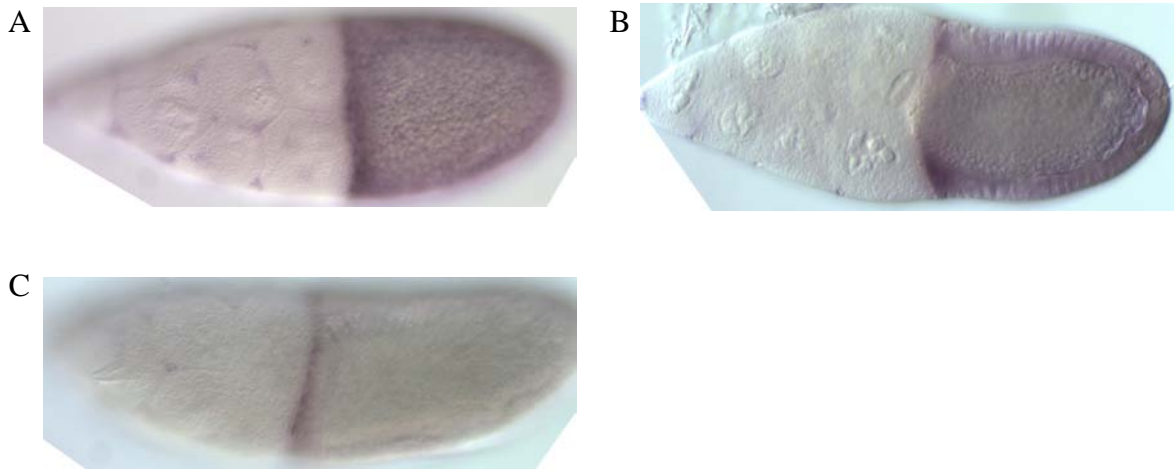


Figure P26. Representative gene expression patterns and annotations for *dally*. (A) Stage 10A: A+U. (B) Stage 10B: A+U. (C) Stage 11: A\D.

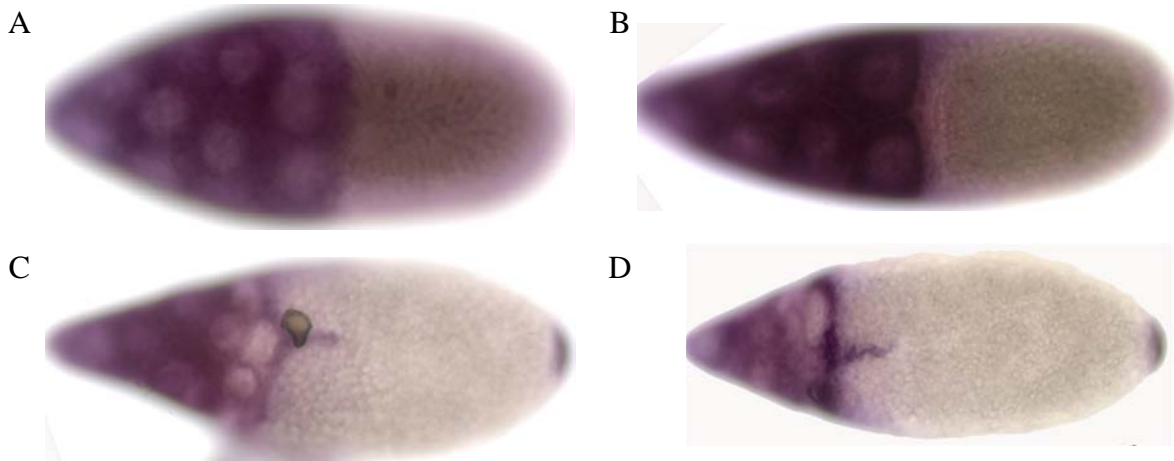


Figure P27. Representative gene expression patterns and annotations for *drk/Grb2*. (A) Stage 10A: U. (B) Stage 10B: U. (C) Stage 11: M. (D) Stage 12: M.

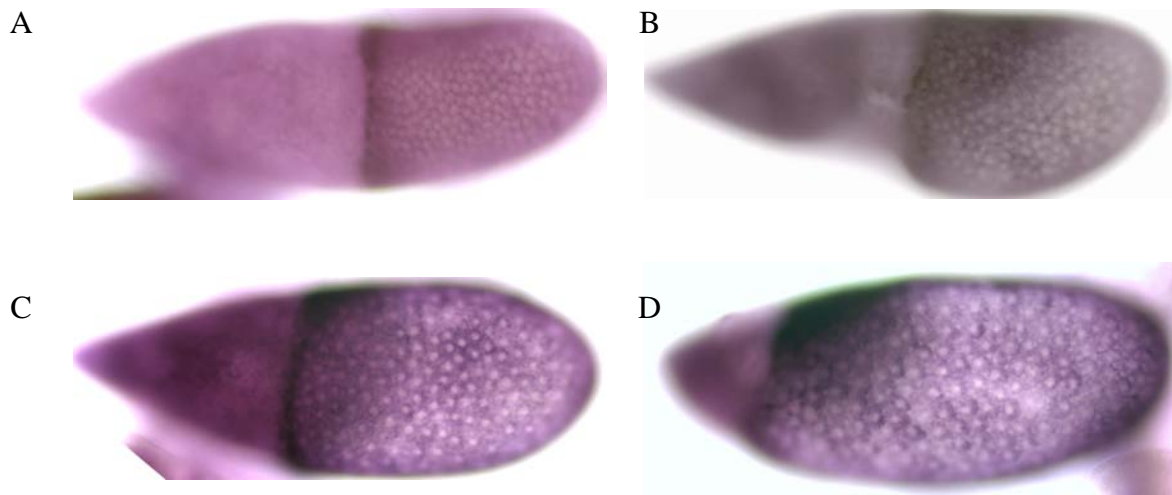


Figure P28. Representative gene expression patterns and annotations for *Fkbp13*. (A) Stage 10A: A+U. (B) Stage 10B: A∪D+U. (C) Stage 11: A∪D+U. (D) Stage 12: A∪D+U.

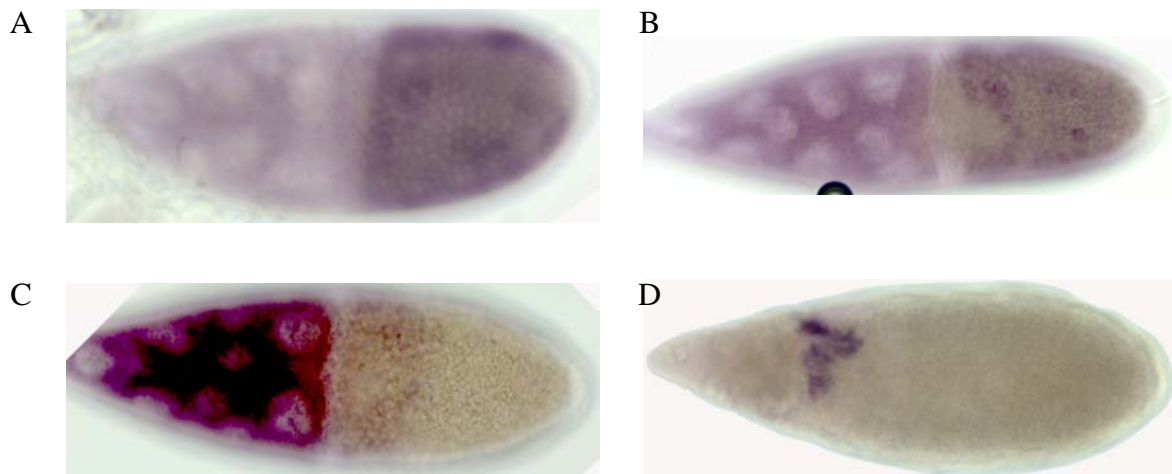


Figure P29. Representative gene expression patterns and annotations for *GstE1*. (A) Stage 10A: U∖A. (B) Stage 10B: U∖M. (C) Stage 11: R. (D) Stage 12: F.

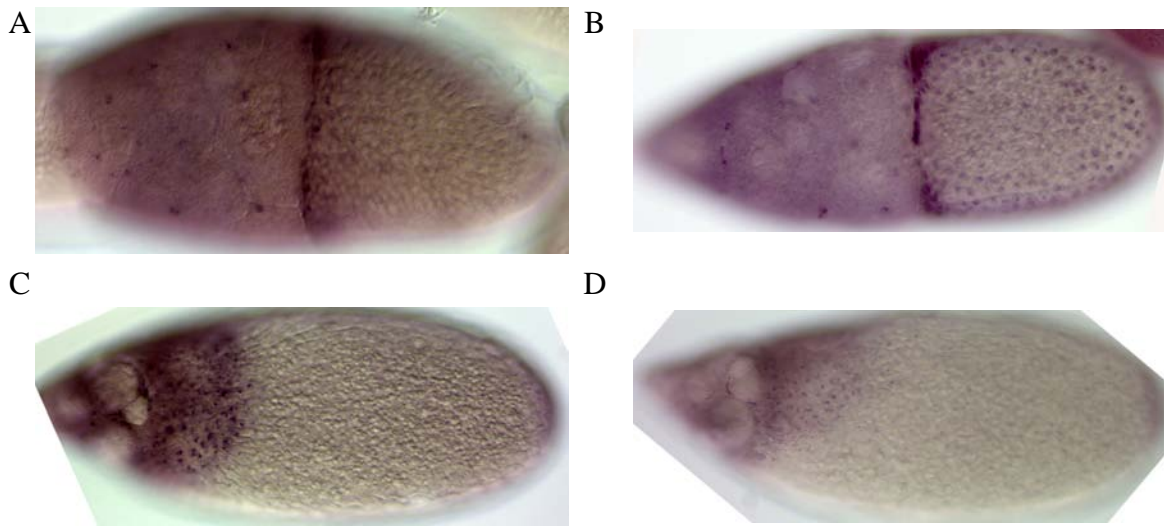


Figure P30. Representative gene expression patterns and annotations for *Hsp68*. (A) Stage 10A: A. (B) Stage 10B: A+U. (C) Stage 12, dorsal view: D\R. (D) Stage 12, lateral view: D\R.

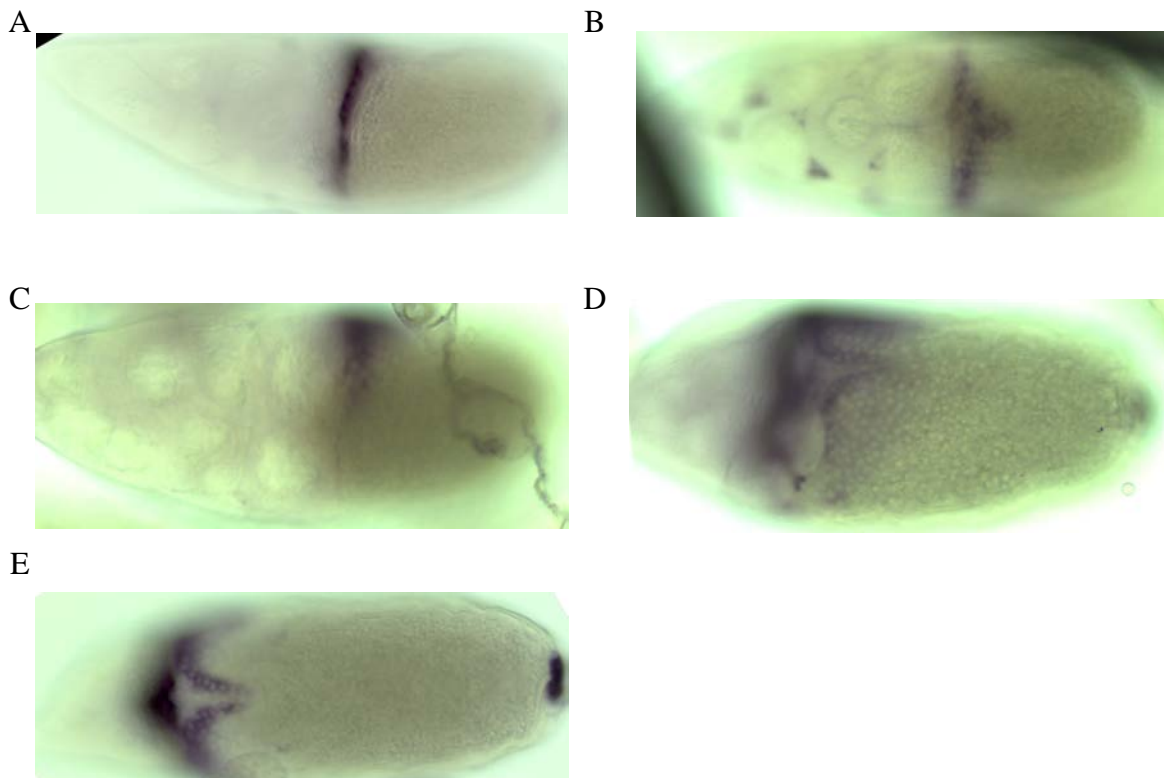


Figure P31. Representative gene expression patterns and annotations for *ImpL2*. (A) Stage 10A: A. (B) Stage 10B, dorsal view: M. (C) Stage 10B, lateral view: M. (D) Stage 11: F \cup R. (E) Stage 12: F.

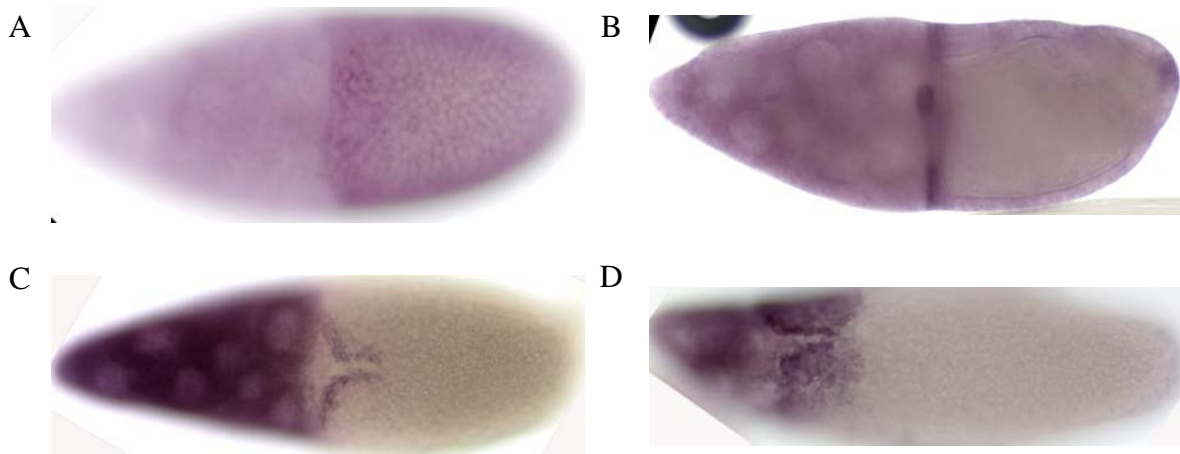


Figure P32. Representative gene expression patterns and annotations for *jar*. (A) Stage 10A: U. (B) Stage 10B: A+U. (C) Stage 11: F. (D) Stage 12: F∪R.

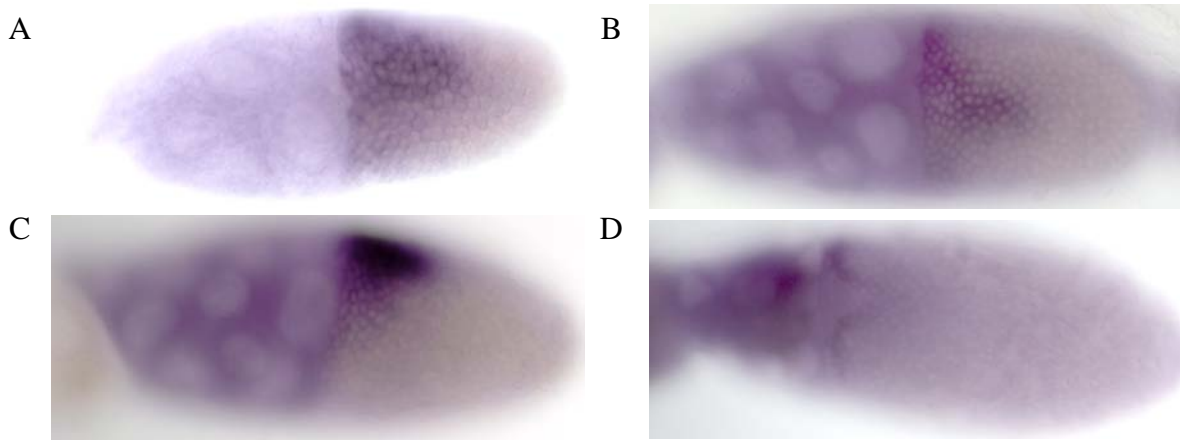


Figure P33. Representative gene expression patterns and annotations for *kekl*. (A) Stage 10A, dorsal view: M. (B) Stage 10B, dorsal view: M. (C) Stage 10B, lateral view: M. (D) Stage 11: F.

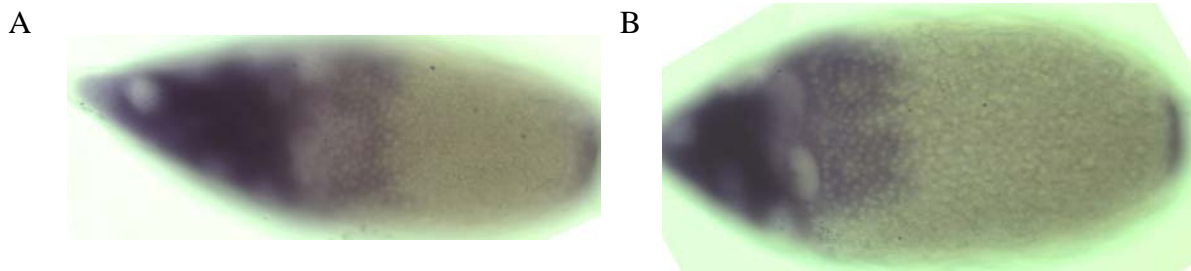


Figure P34. Representative gene expression patterns and annotations for *melt*. (A) Stage 11: D. (B) Stage 12: D\M.

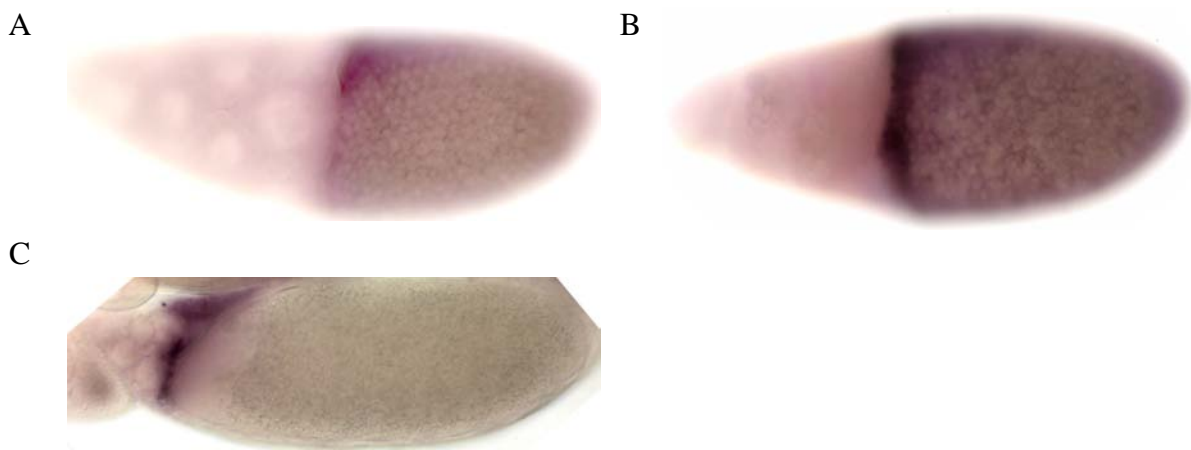


Figure P35. Representative gene expression patterns and annotations for *mia*. (A) Stage 10B: $A \cap D$. (B) Stage 11: $A + U$. (C) Stage 12: A.

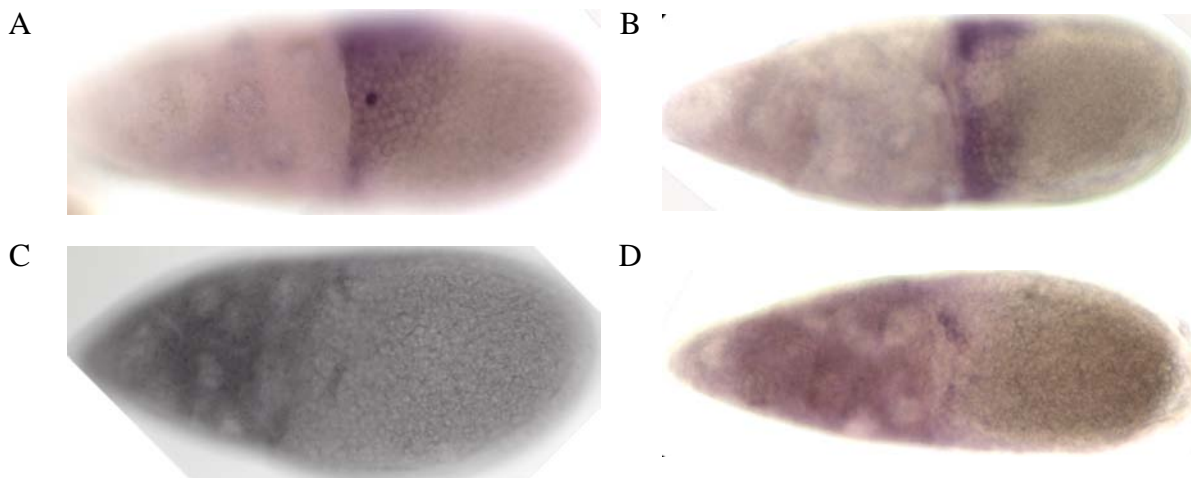


Figure P36. Representative gene expression patterns and annotations for *mirr*. (A) Stage 10A: $A \cup D$. (B) Stage 10B: $A \cup R$. (C) Stage 11: F. (D) Stage 11: F.

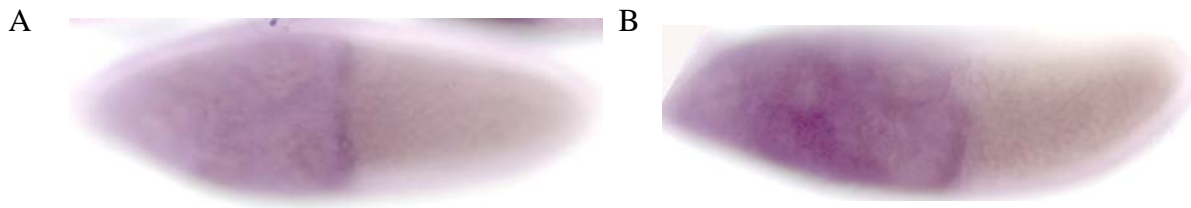


Figure P37. Representative gene expression patterns and annotations for *Phky*. (A) Stage 10A: A. (B) Stage 10B: A\D.

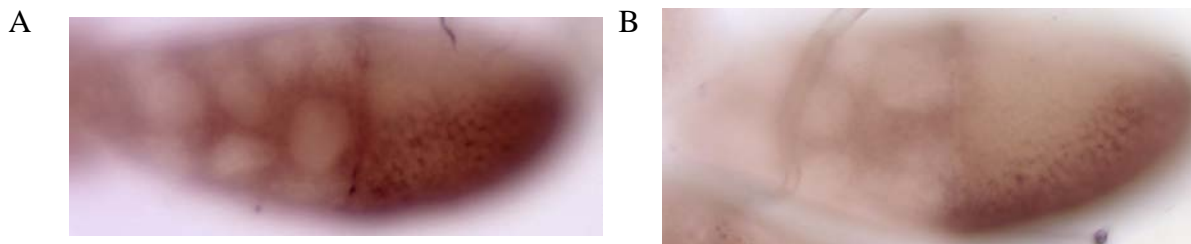


Figure P38. Representative gene expression patterns and annotations for *pip-RA*. (A) Stage 10A: A∪U\D. The anterior band is more pronounced in Peri *et al*, 2002. (B) Stage 10B: U\D.

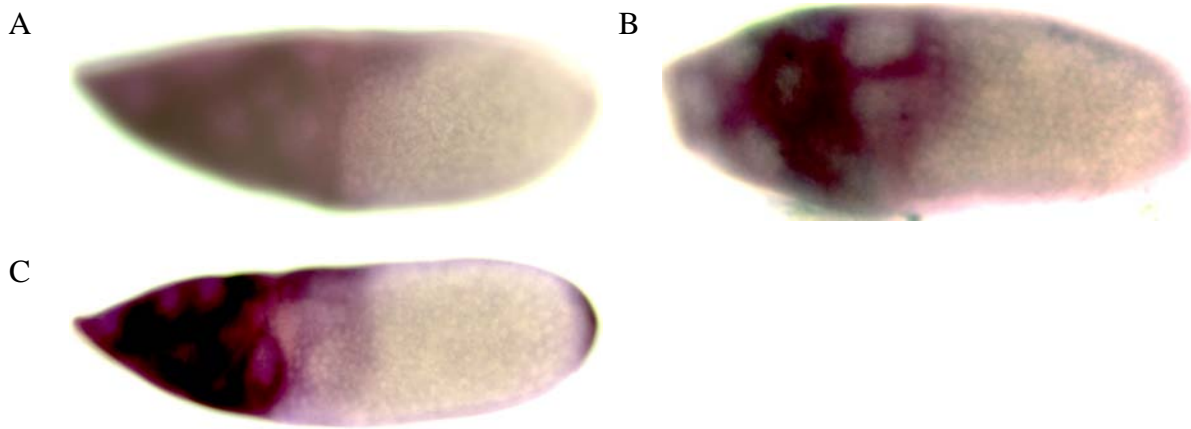


Figure P39. Representative gene expression patterns and annotations for *pnt-P1*. (A) Stage 10A: A∪M. (B) Stage 10B: A∪M. (C) Stage 11: F

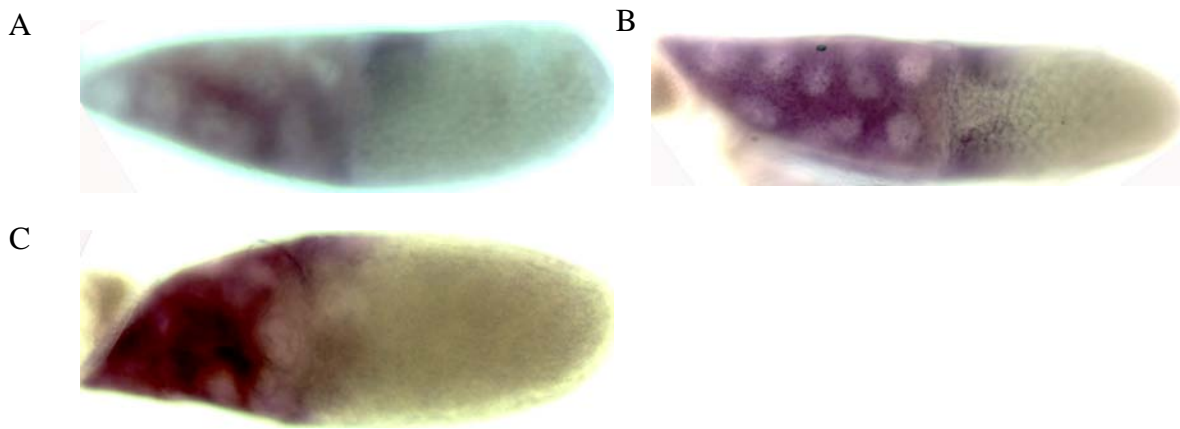


Figure P40. Representative gene expression patterns and annotations for *pnt-P2*. (A) Stage 10A: M. (B) Stage 10B: R. (C) Stage 11: R.

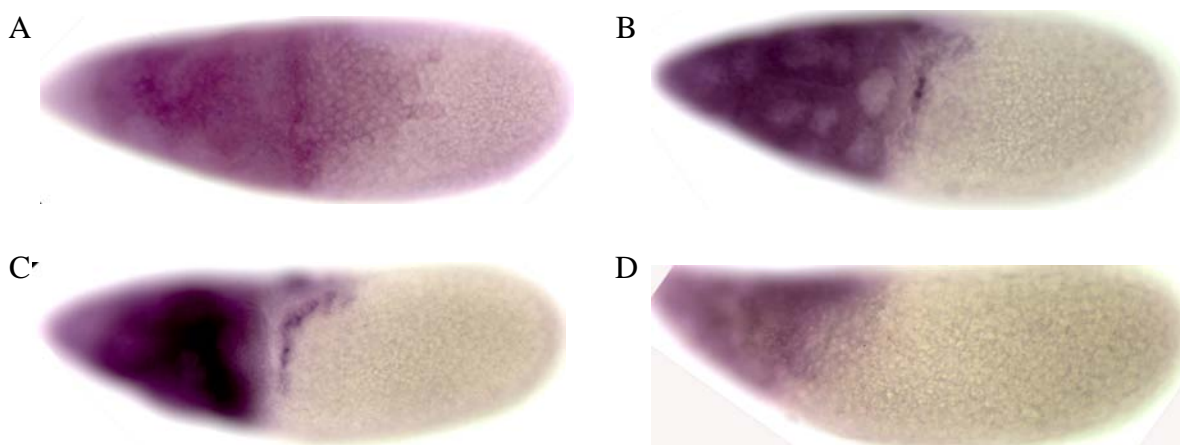


Figure P41. Representative gene expression patterns and annotations for *Ras85D*. (A) Stage 10A: D. (B) Stage 10B: F. (C) Stage 11: F. (D) Stage 12: F.

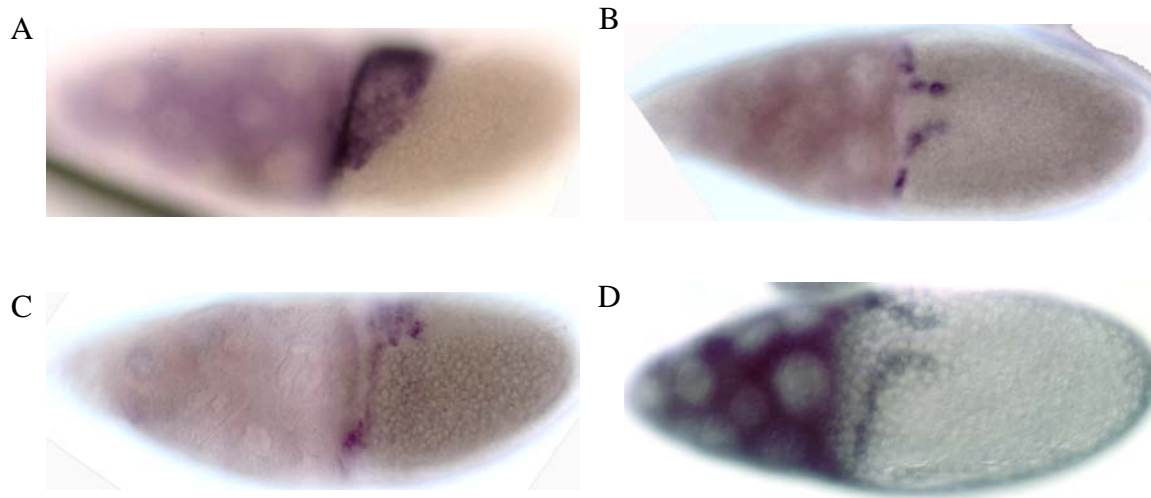


Figure P42. Representative gene expression patterns and annotations for *rho*. (A) Stage 10A: D\M. (B) Stage 10B, dorsal view: F. (C) Stage 10B, lateral view: F. (D) Stage 11: F.

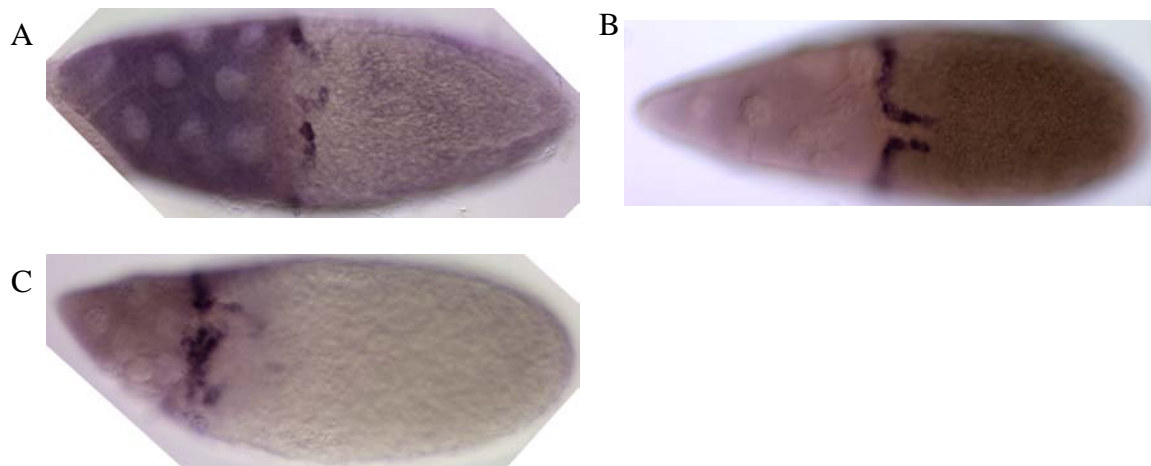


Figure P43. Representative gene expression patterns and annotations for *scarface*. (A) Stage 10B: F. (B) Stage 11: F. (C) Stage 12: F.

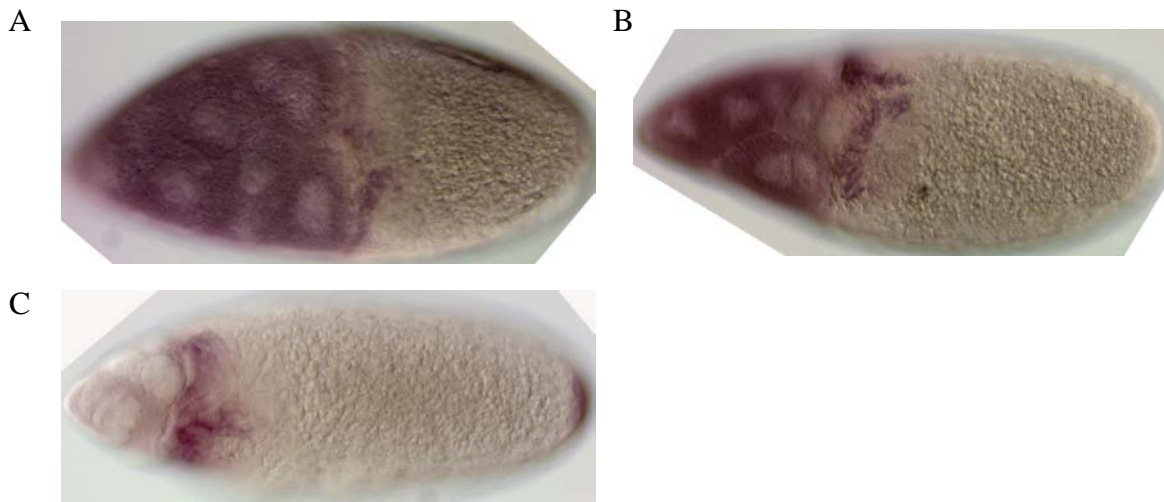


Figure P44. Representative gene expression patterns and annotations for *sgl*. (A) Stage 10B: F. (B) Stage 11: F. (C) Stage 12: M.

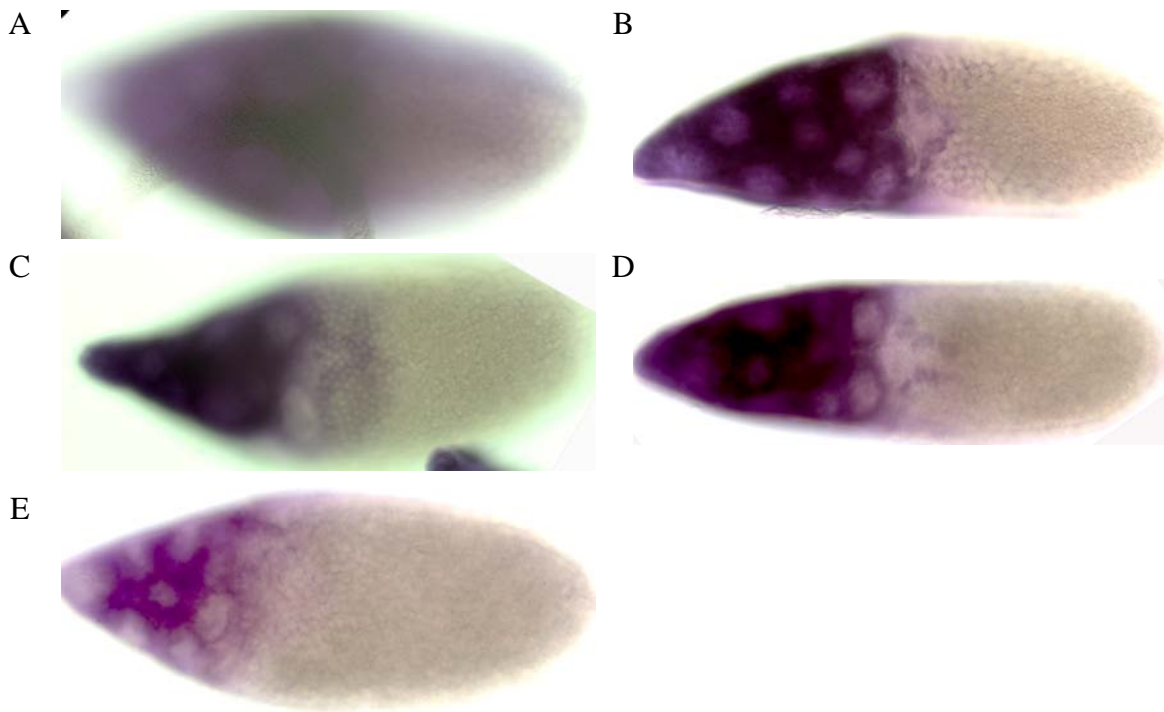


Figure P45. Representative gene expression patterns and annotations for *Shc*. (A) Stage 10A: U. (B) Stage 10B: F. (C) Stage 11: F. (D) Stage 11: F. (E) Stage 12: F.

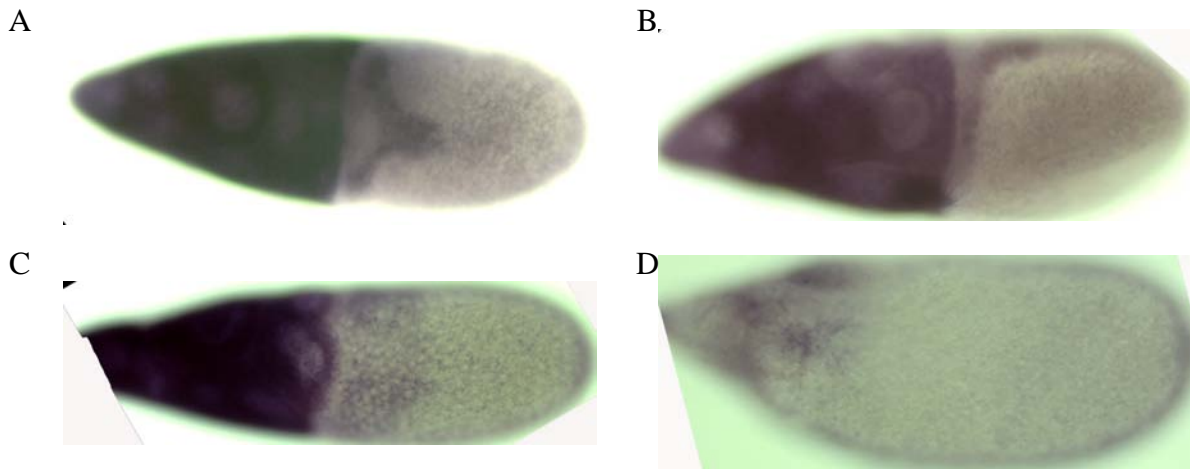


Figure P46. Representative gene expression patterns and annotations for *slbm*. (A) Stage 10B, dorsal view: F. (B) Stage 10B, lateral view: F. (C) Stage 11: R. (D) Stage 12: R.

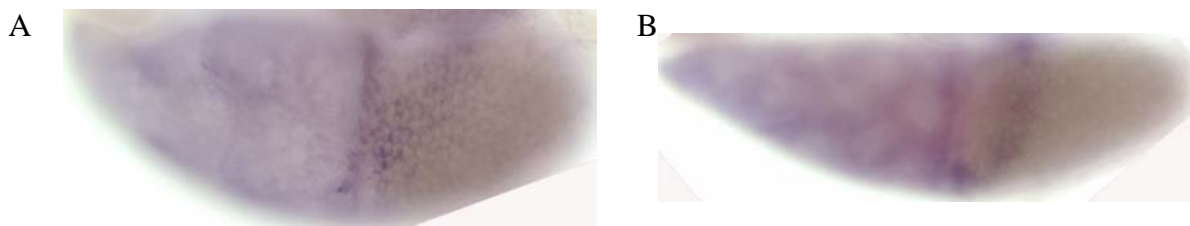


Figure P47. Representative gene expression patterns and annotations for *Snoo*. (A) Stage 10A: $A \cap D \cup D \setminus D$. (B) Stage 10B: $D \setminus D$.

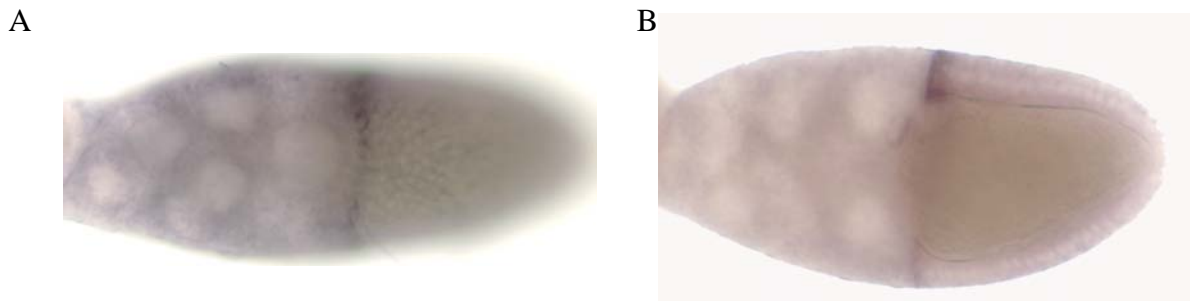


Figure P48. Representative gene expression patterns and annotations for *sog*. (A) Stage 10A: $A \cap D$. (B) Stage 10B: $A \cap D$.

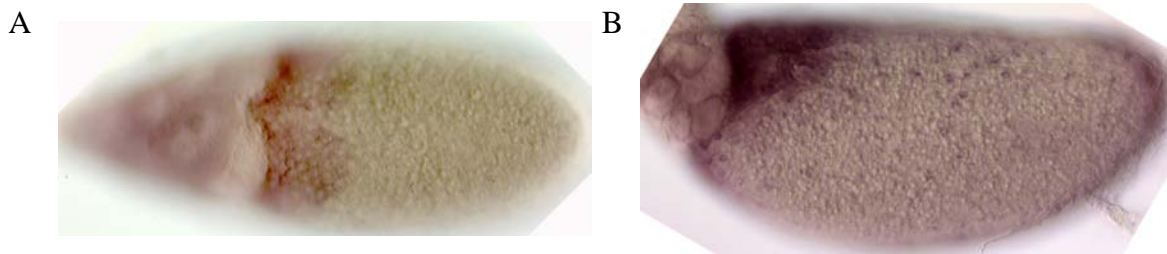


Figure P49. Representative gene expression patterns and annotations for *srp*. (A) Stage 11: D\M. (B) Stage 12: D.

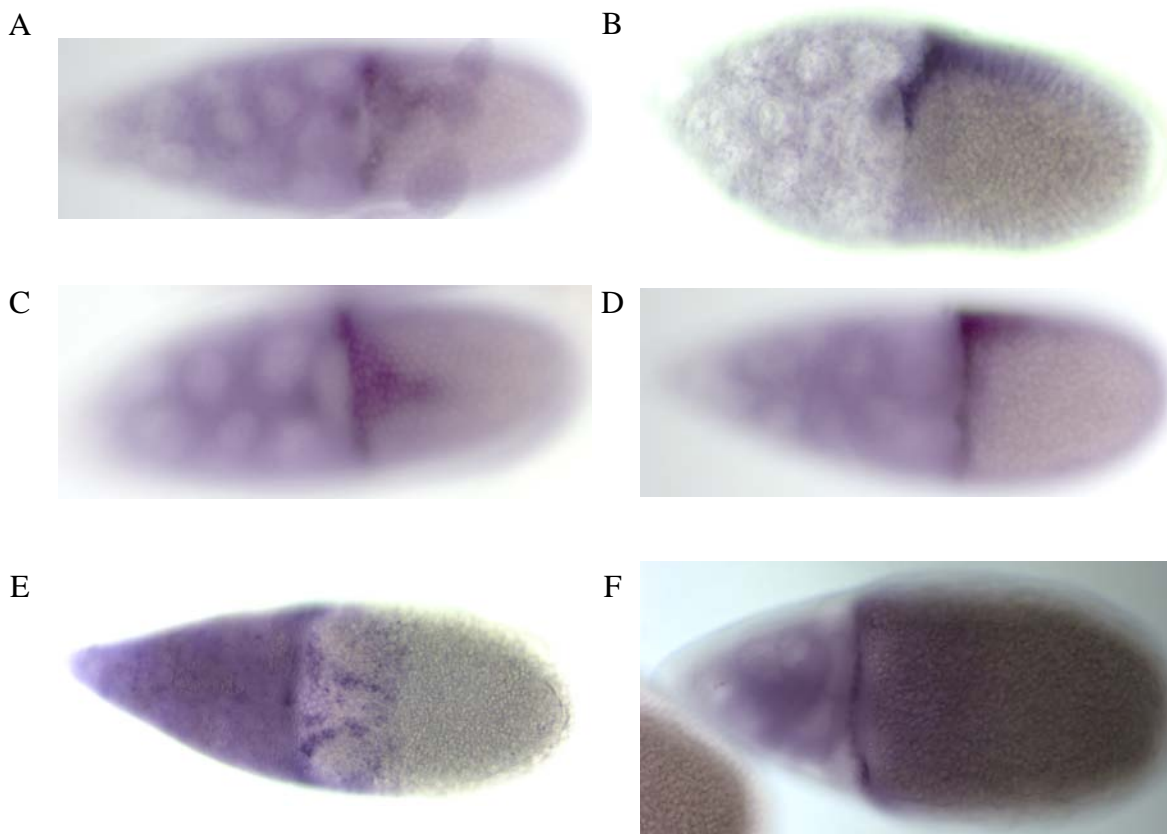


Figure P50. Representative gene expression patterns and annotations for *sty*. (A) Stage 10A, dorsal view, M. (B) Stage 10A, lateral view, M. (C) Stage 10B, dorsal view, A∪M. (D) Stage 10B, lateral view: A∪M. (E) Stage 11, dorsal view: A\D∪F. (F) Stage 11, ventral view: A\D∪F.

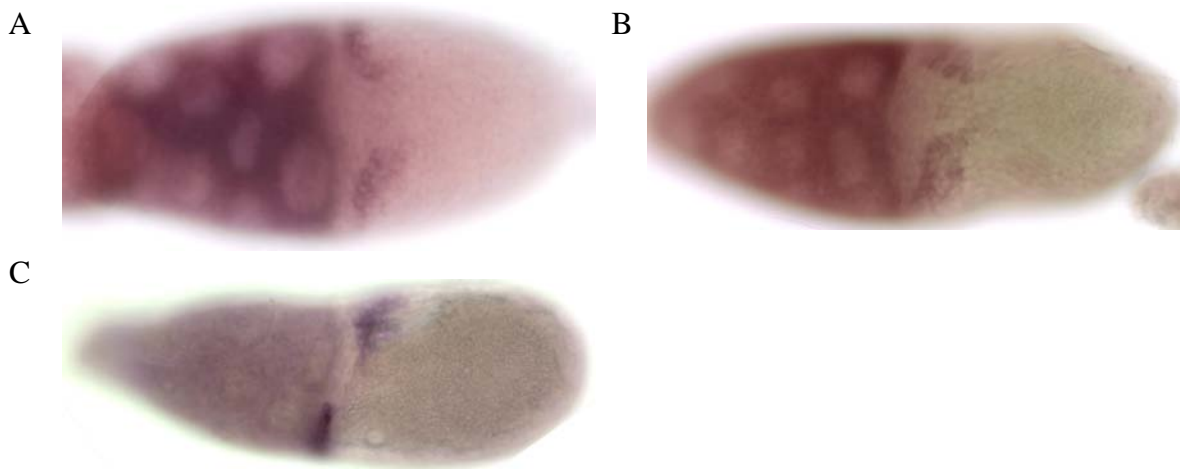


Figure P51. Representative gene expression patterns and annotations for *tkv*. (A) Stage 10A: A\D∪R. (B) Stage 10B, dorsal view: A\D∪R. (C) Stage 10B, lateral view: A\D∪R.



Figure P52. Representative gene expression patterns and annotations for *tsq*. (A) Stage 10B: A∩D.

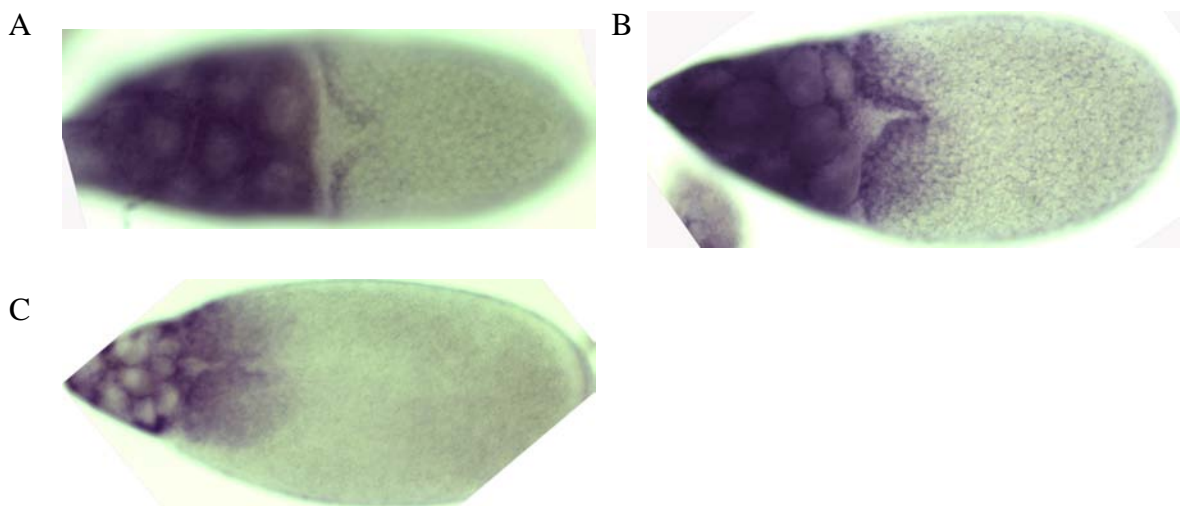


Figure P53. Representative gene expression patterns and annotations for *Vinc*. (A) Stage 10B: F. (B) Stage 11: F∪R. (C) Stage 12: F∪R.

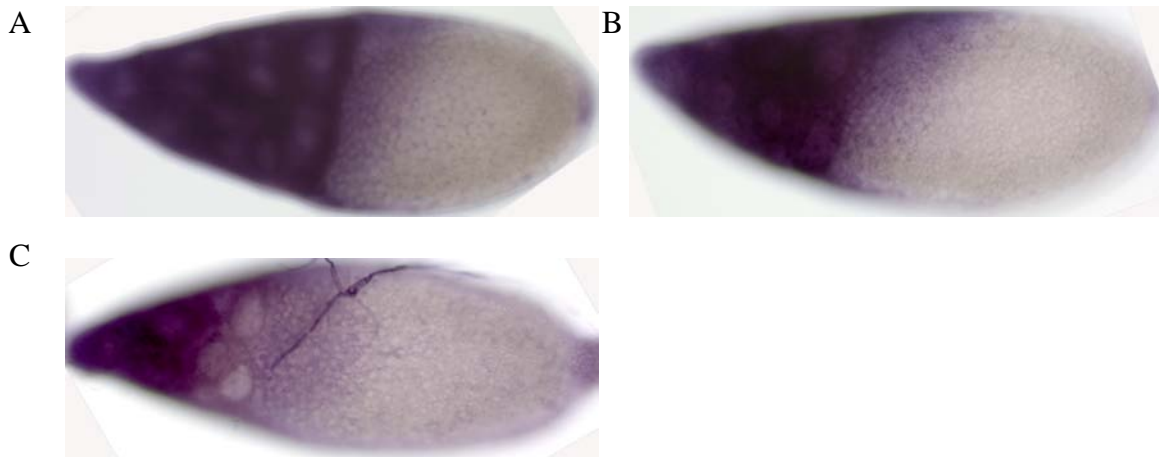


Figure P54. Representative gene expression patterns and annotations for *vkg*. (A) Stage 10B: A. (B) Stage 11: A. (C) Stage 12: D.

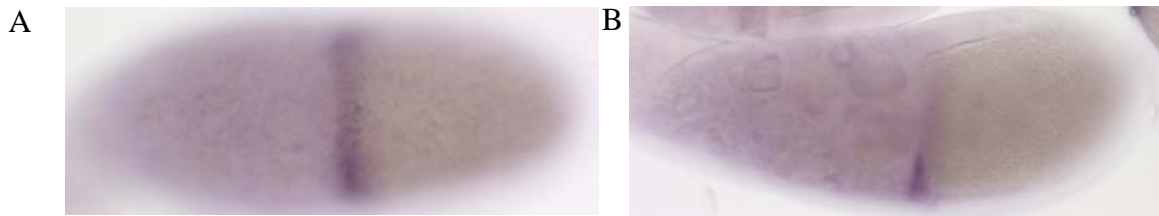


Figure P55. Representative gene expression patterns and annotations for *wit*. (A) Stage 10A: A. (B) Stage 10B: A\D.

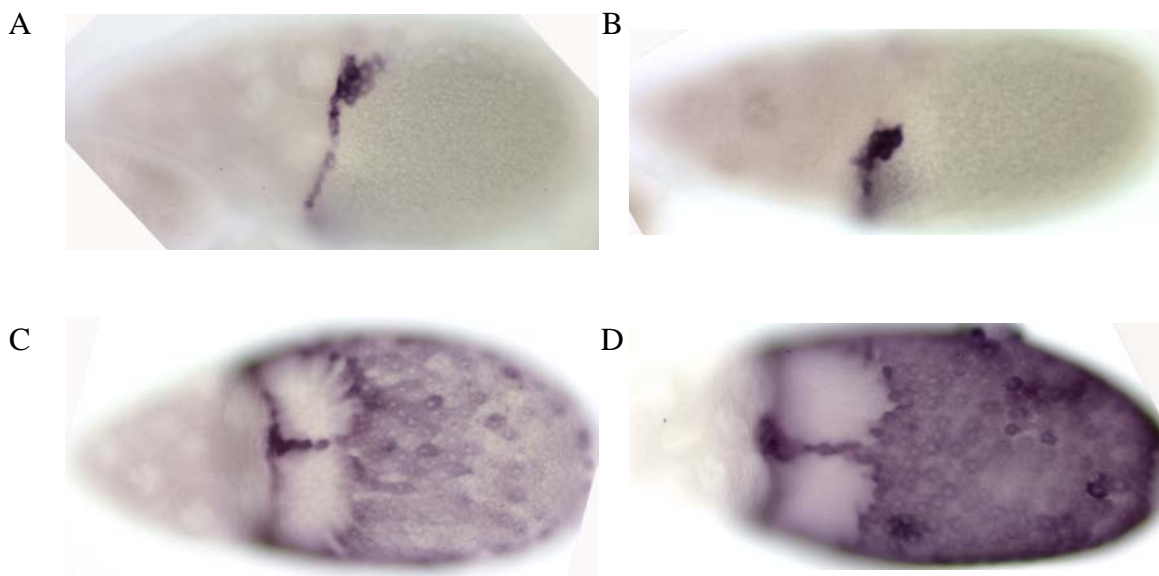


Figure P56. Representative gene expression patterns and annotations for *yellow-g2*. (A) Stage 10B, ventral view: A\D. (B) Stage 10B, lateral view: A\D. (C) Stage 11: M∪U\D. (D) Stage 12: M∪U\D.