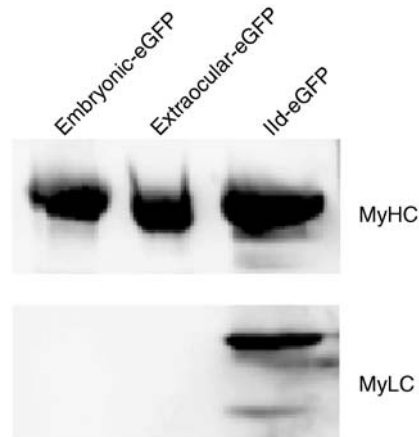


# Supporting Information

Resnicow et al. 10.1073/pnas.0913527107



**Fig. S1.** Western blot showing the lack of associated light chains in purified Embryonic-eGFP and Extraocular-eGFP samples. Recombinant proteins were run on a 4–20% SDS-PAGE gel and transferred to PVDF membrane. The membrane was cut in half, and western blotted using either a pan-anti-fast myosin heavy chain antibody (*Upper*) (F59, Developmental Studies Hybridoma Bank (DHSB), University of Iowa) or an anti-myosin light chain 1f/3f antibody (*Lower*) (F310, DHSB), and imaged using an alkaline phosphatase conjugated goat anti-mouse secondary antibody (Jackson Labs) and ECF reagent on a Storm imager (GE Healthcare).

**Table S1. Murine myosin light chain isoforms identified in purified samples of Perinatal-eGFP and Ild-eGFP. LC-MSMS mass spectrometry data was acquired using a Thermo LTQ XL (UCHSC Proteomics Core), and peptides were identified by searching SwissProt v51.6 using Mascot.**

| Sample         | Accession No. | Protein                                                                                                                    | Score | Mass  | Matches | %Coverage |
|----------------|---------------|----------------------------------------------------------------------------------------------------------------------------|-------|-------|---------|-----------|
| Perinatal-eGFP | P97457        | Myosin regulatory light chain 2, skeletal muscle isoform (MLC2F)                                                           | 1636  | 19057 | 69      | 95.3      |
|                | P05977        | Myosin light chain 1, skeletal muscle isoform (MLC1F) (A1 catalytic) (Alkali myosin light chain 1)                         | 1362  | 20695 | 83      | 97.3      |
|                | P05978        | Myosin light chain 3, skeletal muscle isoform (A2 catalytic) (Alkali myosin light chain 3) (MLC3F)                         | 1113  | 16703 | 61      | 99.3      |
|                | P09541        | Myosin light polypeptide 4 (Myosin light chain atrial/fetal isoform) (MLC1A) (MLC1EMB)                                     | 888   | 21260 | 41      | 81.3      |
|                | Q8C143        | Myosin light polypeptide 6B (Smooth muscle and nonmuscle myosin light chain alkali 6B)                                     | 707   | 22849 | 46      | 91.8      |
| Ild-eGFP       | P97457        | Myosin regulatory light chain 2, skeletal muscle isoform (MLC2F)                                                           | 862   | 19057 | 54      | 91.1      |
|                | P05977        | Myosin light chain 1, skeletal muscle isoform (MLC1F) (A1 catalytic) (Alkali myosin light chain 1)                         | 621   | 20695 | 48      | 87.2      |
|                | P09541        | Myosin light polypeptide 4 (Myosin light chain atrial/fetal isoform) (MLC1A) (MLC1EMB)                                     | 575   | 21260 | 31      | 77.7      |
|                | Q8C143        | Myosin light polypeptide 6B (Smooth muscle and nonmuscle myosin light chain alkali 6B)                                     | 529   | 22849 | 39      | 80.2      |
|                | P05978        | Myosin light chain 3, skeletal muscle isoform (A2 catalytic) (Alkali myosin light chain 3) (MLC3F)                         | 513   | 16703 | 34      | 88.7      |
|                | Q60605        | Myosin light polypeptide 6 (Smooth muscle and nonmuscle myosin light chain alkali 6) (Myosin light chain alkali 3) (MLC-3) | 194   | 17090 | 17      | 50.3      |