

Supplementary Figures and Tables for:

‘How baculovirus polyhedra fit square pegs into round holes to robustly package viruses’,

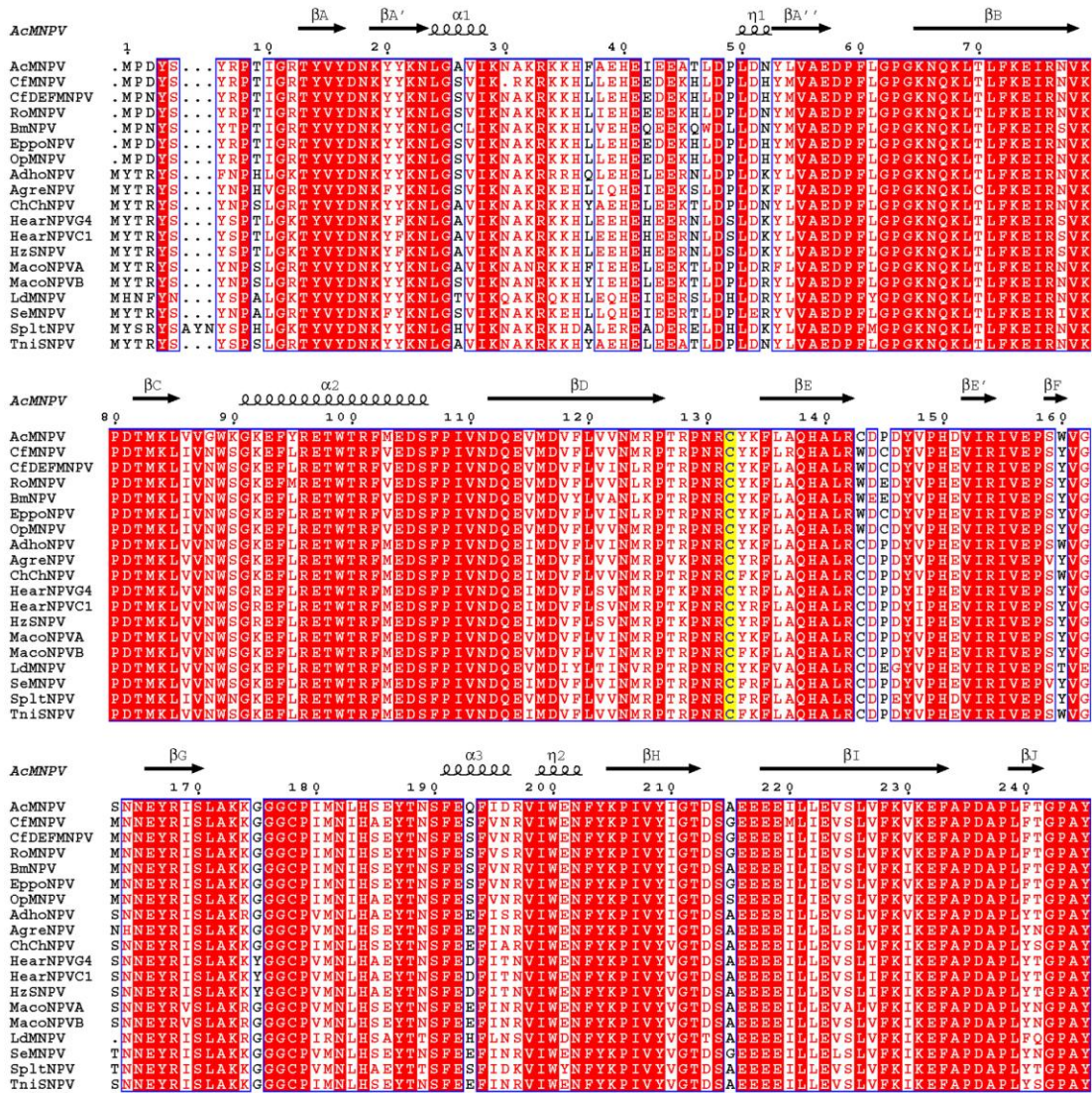
Xiaoyun Ji, Geoff Sutton, Gwyndaf Evans, Danny Axford, Robin Owen, David

I. Stuart

Supplementary Figure 1 Amino acid sequence conservation

Amino acid sequence conservation for the **(A)** alphaBVs and **(B)** betaBVs. Conserved residues drawn in red boxes, similar residues in red type. The secondary structure assignment for AcMNPV is drawn above the alphaBV alignment. Conserved cysteine is highlighted in yellow. The sequences were aligned with ClustalW (Chenna *et al*, 2003) and visualized using ESPript (Gouet *et al*, 1999). A full list of the accession numbers for the virus genomes and virus abbreviations can be found in (Jehle *et al*, 2006).

A Alpha Baculoviruses



B Beta Baculoviruses

