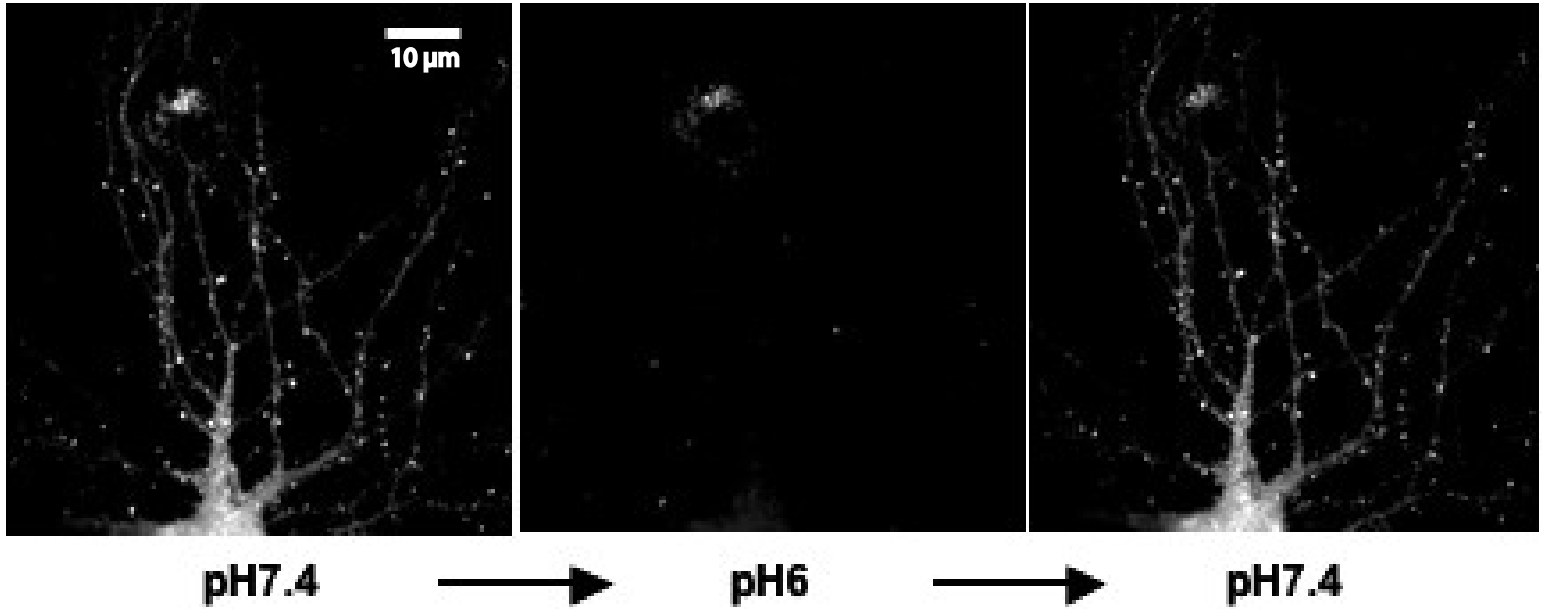


Supplemental Figure 2



Supplemental Figure 2. SEP-GluR1 signals originate from surface exposed. GluR1. Primary hippocampal cultures were transfected with SEP-GluR1 at 5-7 DIV and images captured at 21 DIV. Nearly all fluorescence signals were quenched when the pH of the culture medium was acutely lowered from 7.4 to 6.0. This effect was reversible upon raising the pH back to 7.4; (n = 3).