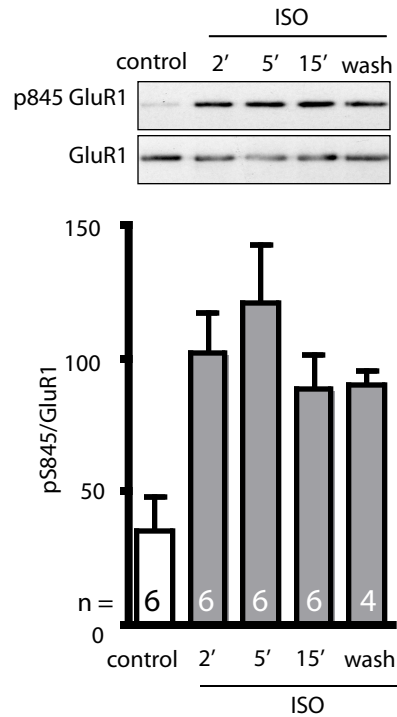


Supplemental Figure 8



Supplemental Figure 8. Time course of ISO-stimulated GluR1 S845 phosphorylation in PFC slices. Acute mouse PFC slices were treated with 10 μ M ISO for 2-15 min, followed by a 15 min wash out period if indicated (“wash”) or left unstimulated (“control”). Slices were extracted with Triton X-100 and non-soluble material removed by ultracentrifugation. GluR1 was immunoprecipitated before immunoblotting with antibodies against phosphorylated S845 (top) and total GluR1 (bottom). Immunosignals were quantified by densitometry. Phospho-S845 (pS845) signals were corrected with respect to total GluR1 signals. Results are averages from the number of experiments (n) indicated within bars + SEM. ISO increased the phosphorylation within 2 min to near maximum. 15 min wash out did not reduce phosphorylation.