

**Appendix Table A1.** Baseline characteristics of participants in the Care Coordination (CC) and Active Care Management (ACM+HT) treatment groups.

Characteristics	CC (N=73)		ACM+HT (N=64)		P-value
	n	%	n	%	
<b>Age group</b>					0.98
<45 years	4	5.5	3	4.7	
45-65 years	43	58.9	38	59.4	
>=65 years	26	35.6	23	35.9	
<b>Division/CBOC</b>					
University Drive	35	48.0	30	46.2	
Highland Drive	9	12.3	10	15.6	
Aspinwall	14	19.2	14	21.9	
AQ (CBOC)	2	2.7	2	3.1	
GB (CBOC)	3	4.1	2	3.1	
UN (CBOC)	3	4.1	0	0.0	
WA (CBOC)	2	2.7	1	1.6	
SC (CBOC)	5	6.9	5	7.8	
<b>Gender</b>					0.18
Male	71	97.3	64	100.0	
Female	2	2.7	0	0.0	
<b>Race</b>					0.24
White, not of Hispanic origin	59	80.8	46	71.9	
African-American or black, not of Hispanic origin	12	16.4	18	28.1	
Asian or Pacific Islander	1	1.4	0	0.0	
American Indian or Alaskan Native	1	1.4	0	0.0	
<b>Employment status</b>					0.09
Employed full-time ( $\geq 35$ hours/week)	18	24.7	5	7.8	
Employed part-time (<35 hours/week)	8	11.0	8	12.5	
Homemaker, not working outside the home	1	1.4	2	3.1	
Retired	38	52.0	37	57.8	
Unemployed	8	11.0	12	18.8	
<b>Marital status</b>					0.48
Single, never married	12	16.4	7	10.9	
Married, or living as married	40	54.8	32	50.0	
Widowed	4	5.5	7	10.9	
Separated or divorced	17	23.3	18	28.1	
<b>Living arrangement</b>					0.21
Private residence (house or apartment), living alone	19	26.0	23	35.9	
Private residence, living with others	54	74.0	41	64.1	
<b>Education</b>					0.59
Grade school (year 1 through 8) or less	2	2.7	2	3.1	
Some high school	6	8.2	5	7.8	
Completed high school or GED	30	41.1	23	35.9	
Some college or association school	12	16.4	19	29.7	
Completed technical or vocational school	13	17.8	8	12.5	
Completed college or more	10	13.7	7	10.9	
<b>Comorbidities</b>					
Coronary artery disease	24	32.9	25	39.1	0.45
Congestive heart failure	9	12.3	13	20.3	0.20
Chronic obstructive pulmonary disease	6	8.2	4	6.3	0.66

**Appendix Table A2.** Number of participants on each type of medication at baseline, 3 and 6 months, by treatment group.

	CC N=73		ACM+HT N=64		<i>P-value</i>
	n	%	n	%	
<b>Baseline</b>					
Oral hypoglycemic agent	57	78.1	47	73.4	0.53
Insulin	40	54.8	39	60.9	0.47
Antihypertensive medication	66	90.4	56	87.5	0.59
Lipid lowering medication	62	84.9	48	75.0	0.15
<b>3-months</b>					
Oral hypoglycemic agent	56	76.7	45	70.3	0.40
Insulin	40	54.8	39	60.9	0.47
Antihypertensive medication	67	91.8	58	90.6	0.81
Lipid lowering medication	63	86.3	52	81.3	0.42
<b>6-months</b>					
Oral hypoglycemic agent	56	76.7	44	68.8	0.37
Insulin	42	57.5	43	67.2	0.25
Antihypertensive medication	68	93.2	58	90.6	0.59
Lipid lowering medication	63	86.3	50	78.1	0.38

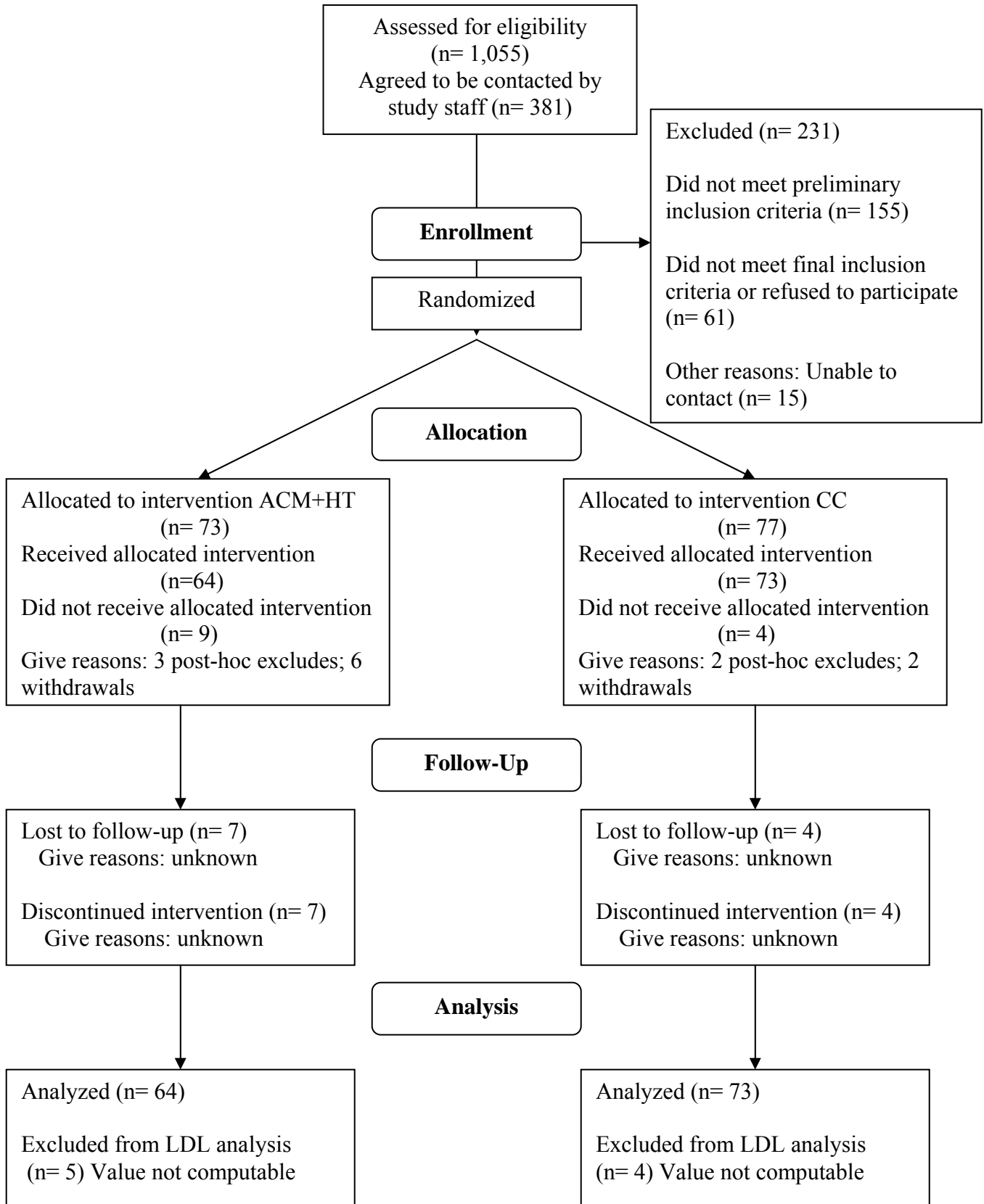
**Appendix Table A3.** Mean change scores over time within each treatment group ( $\text{Diff}_{\text{CC}}$  and  $\text{Diff}_{\text{ACM+HT}}$ ), between-group differences in time-specific change scores ( $\text{Diff}_{\text{ACM}} - \text{Diff}_{\text{CC}}$ ); 95% confidence intervals (95% CIs) for these between-group differences and corresponding P-values are shown for each pair of timepoints. A positive  $\text{Diff}_{\text{CC}}$  or  $\text{Diff}_{\text{ACM}}$  indicates that an outcome decreased over time within the group, while a negative difference indicates an increase. Statistically significant within-group differences over time are indicated by an asterisk (\*). A positive  $\text{Diff}_{\text{ACM}} - \text{Diff}_{\text{CC}}$  indicates that the decrease over time is larger in the ACM+HT group than in the CC group, while a negative value indicates either a smaller decrease or a larger increase over time in the ACM+HT group than in the CC group.

Primary outcome	Timepoints	CC (N=73)		ACM+HT (N=64)		$\text{Diff}_{\text{ACM}} - \text{Diff}_{\text{CC}}$			
		$\text{Diff}_{\text{CC}}$	SD	$\text{Diff}_{\text{ACM}}$	SD	Mean†	95% CI	P-value	
<b>HbA1c (%)</b>	Base-3m	0.7*	1.3	1.7*	1.4	0.9	0.5	1.4	<0.001
	Base-6m	0.8*	1.4	1.7*	1.5	0.9	0.4	1.4	<0.001
	3m-6m	0.1	0.9	0.1	0.9	0.0	-0.3	0.3	0.98
<b>Weight (lbs)</b>	Base-3m	1.5	14.2	1.1	10.8	-0.4	-4.6	3.8	0.86
	Base-6m	-0.3	11.0	-2.9	14.7	-2.5	-6.8	1.7	0.24
	3m-6m	-1.9	10.1	-4.0*	12.4	-2.2	-5.9	1.6	0.26
<b>Systolic BP (mmHg)</b>	Base-3m	5.1*	20.1	8.9*	20.8	3.8	-3.0	10.6	0.27
	Base-6m	9.3*	19.9	12.8*	26.2	3.6	-4.1	11.3	0.36
	3m-6m	4.1	21.3	3.9	27.2	-0.3	-8.5	8.0	0.95
<b>Diastolic BP (mmHg)</b>	Base-3m	3.9*	11.4	4.6*	12.5	0.7	-3.3	4.7	0.73
	Base-6m	4.6*	12.5	7.6*	13.8	3.0	-1.4	7.3	0.18
	3m-6m	0.7	12.0	3.0	14.1	2.3	-2.2	6.7	0.30
<b>Cholesterol (mg/dl)</b>	Base-3m	14.8*	39.6	27.5*	42.4	12.7	-1.2	26.6	0.07
	Base-6m	16.5*	43.9	29.1*	44.4	12.7	-2.2	27.5	0.09
	3m-6m	1.6	27.9	1.6	28.5	0.0	-9.9	9.8	1.00
<b>HDL (mg/dl)</b>	Base-3m	2.1*	6.7	3.4*	12.4	1.3	-2.0	4.6	0.45
	Base-6m	2.0*	6.5	3.3*	9.9	1.3	-1.5	4.1	0.36
	3m-6m	-0.1	5.9	-0.1	8.2	0.0	-2.5	2.5	0.99
<b>LDL†† (mg/dl)</b>	Base-3m	9.5*	29.9	12.5*	33.4	3.0	-8.1	14.1	0.60
	Base-6m	10.6*	32.0	16.5*	34.8	5.9	-5.9	17.7	0.33
	3m-6m	1.1	27.8	4.0	22.6	2.9	-6.0	11.7	0.52
<b>Triglycerides (mg/dl)</b>	Base-3m	24.1	126.8	41.4*	114.5	17.3	-23.9	58.6	0.41
	Base-6m	23.3	111.7	38.9*	113.6	15.6	-22.0	53.1	0.41
	3m-6m	-0.8	80.2	-2.5	87.5	-1.8	-30.4	26.8	0.90

† Because measurements are rounded to one decimal place for reporting purposes, the rounded difference scores may differ slightly from the differences of the rounded means.

†† CC: N=69; ACM+HT: N=59

**Appendix Table A4.** The CONSORT Flowchart



**Appendix Figure A1:** Dotplots of HbA1c at baseline, 3 and 6 months by treatment group for two subgroups: (a) participants who required insulin at baseline, and (b) participants who were taking only oral hypoglycemic agents at baseline. Black circles denote the ACM+HT group and open circles denote the CC group. Time-specific mean values are connected by solid black lines for the ACM+HT group and dotted lines for the CC group.

