

Supporting Information B

One Step Glycolate Aldol Formation: Three Component Coupling Reactions of Silylglyoxylates, Alkynes, and Aldehydes

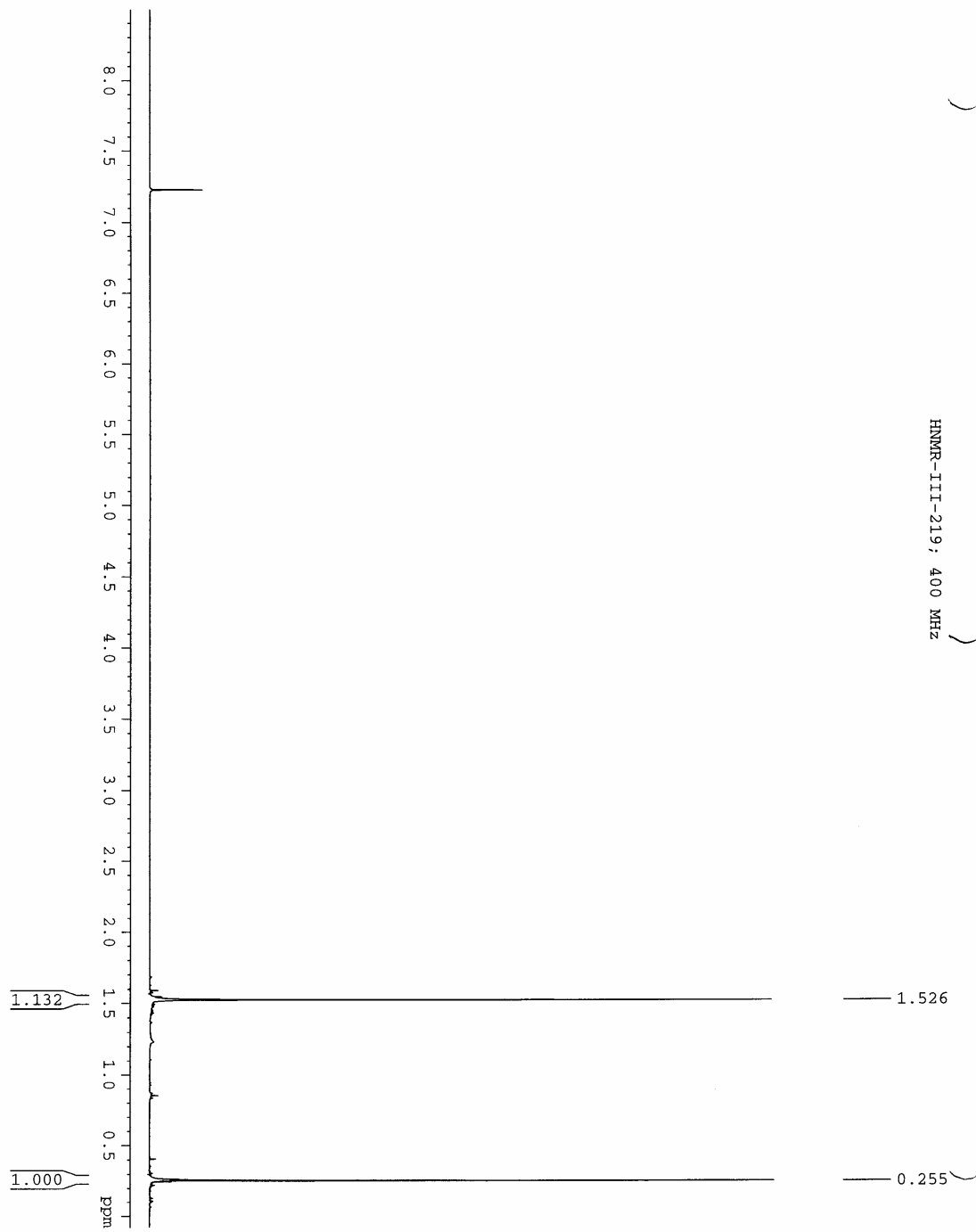
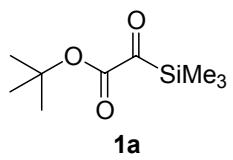
David A. Nicewicz and Jeffrey S. Johnson*

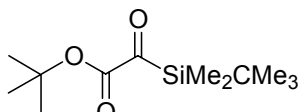
*Department of Chemistry, University of North Carolina at Chapel Hill,
Chapel Hill, North Carolina 27599-3290*

jsj@unc.edu

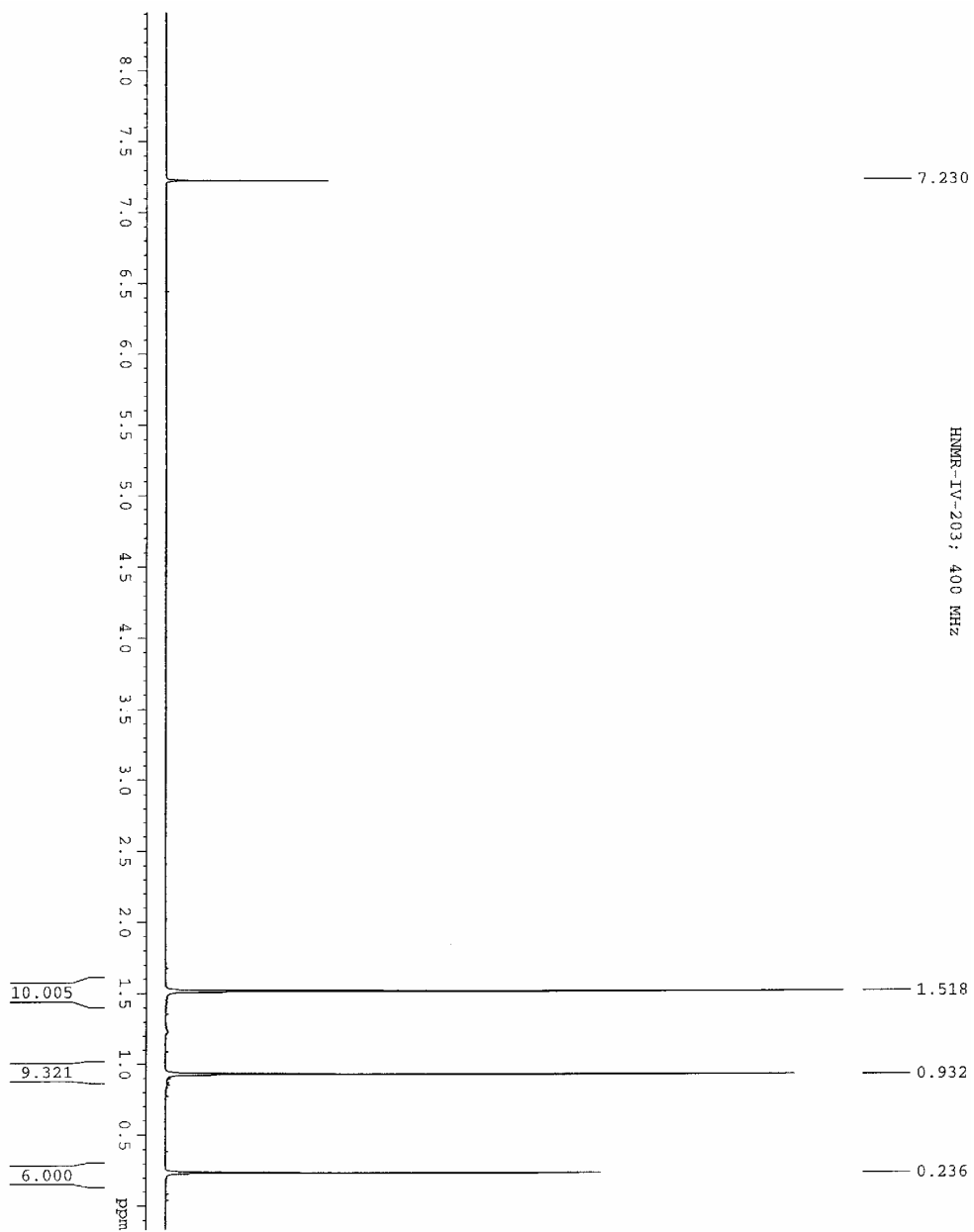
Table of Contents (Spectra Listed in Numerical Order)

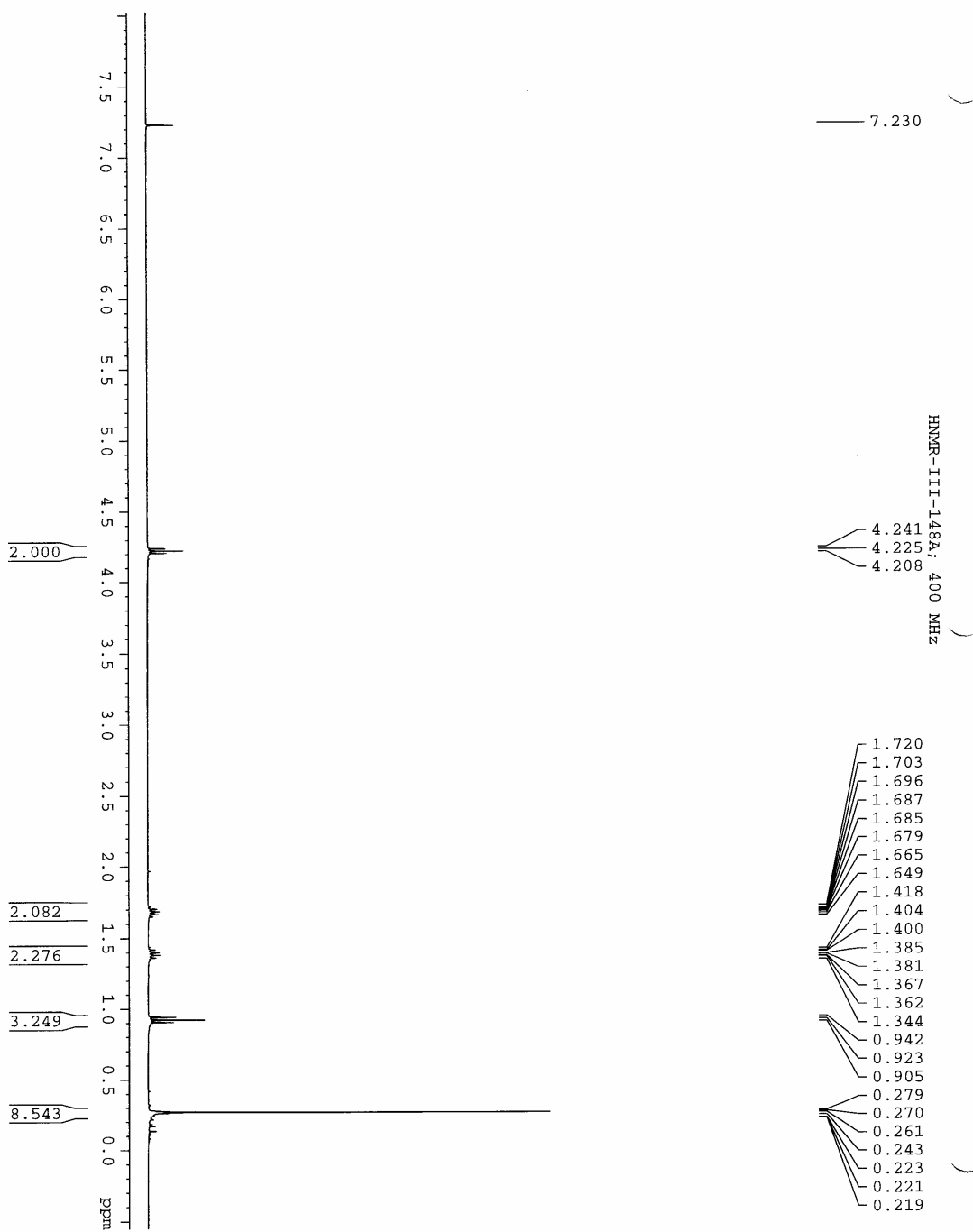
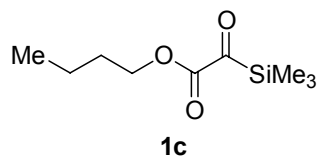
Compounds 1a-1k	S2-S9
Compounds 4a-4e	S9-S14
Compounds 8-9	S15-S16
Compounds 10a-10j	S17-S34
Compounds 12-15	S35-S40

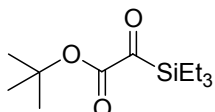




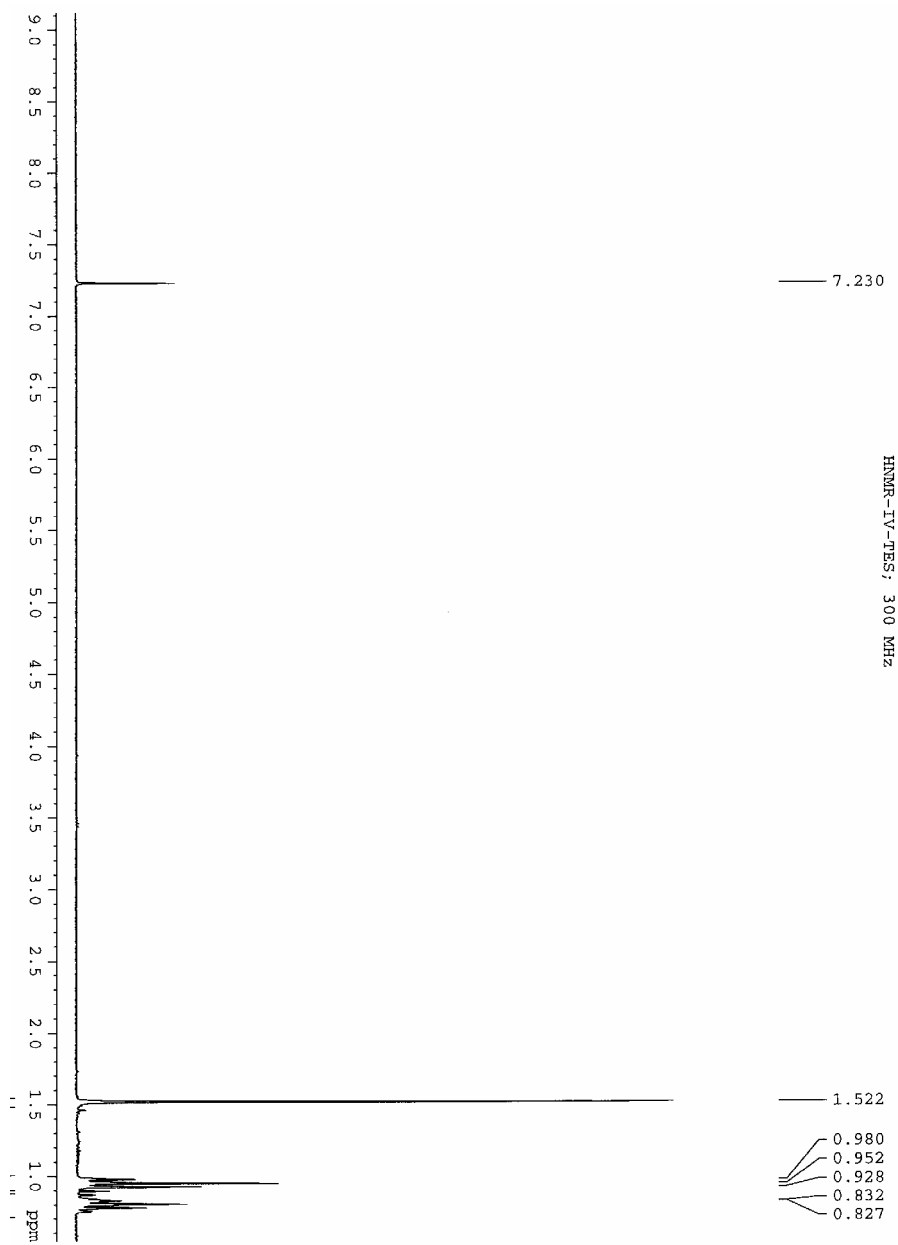
1b

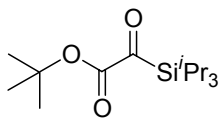




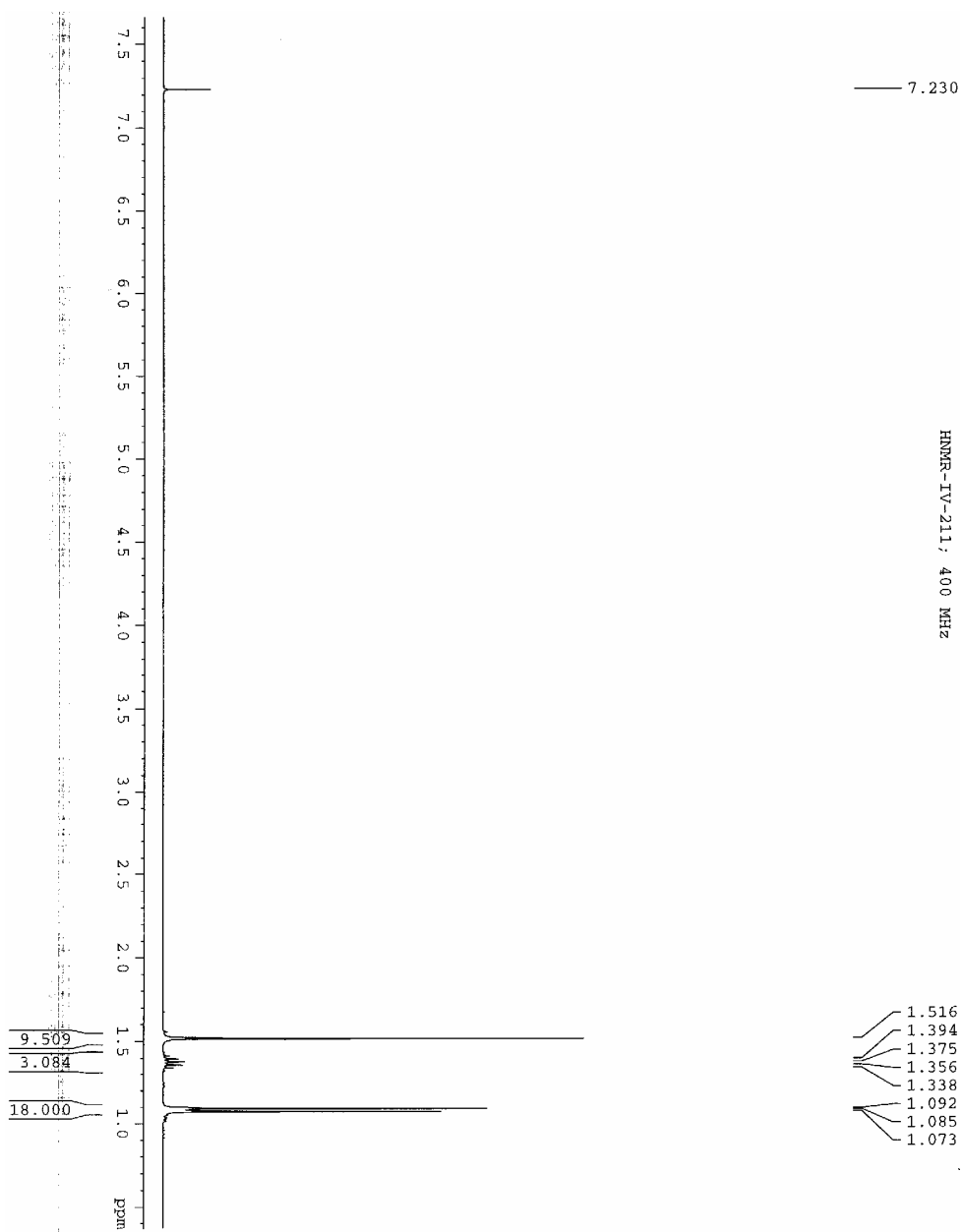


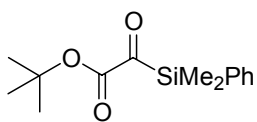
1g



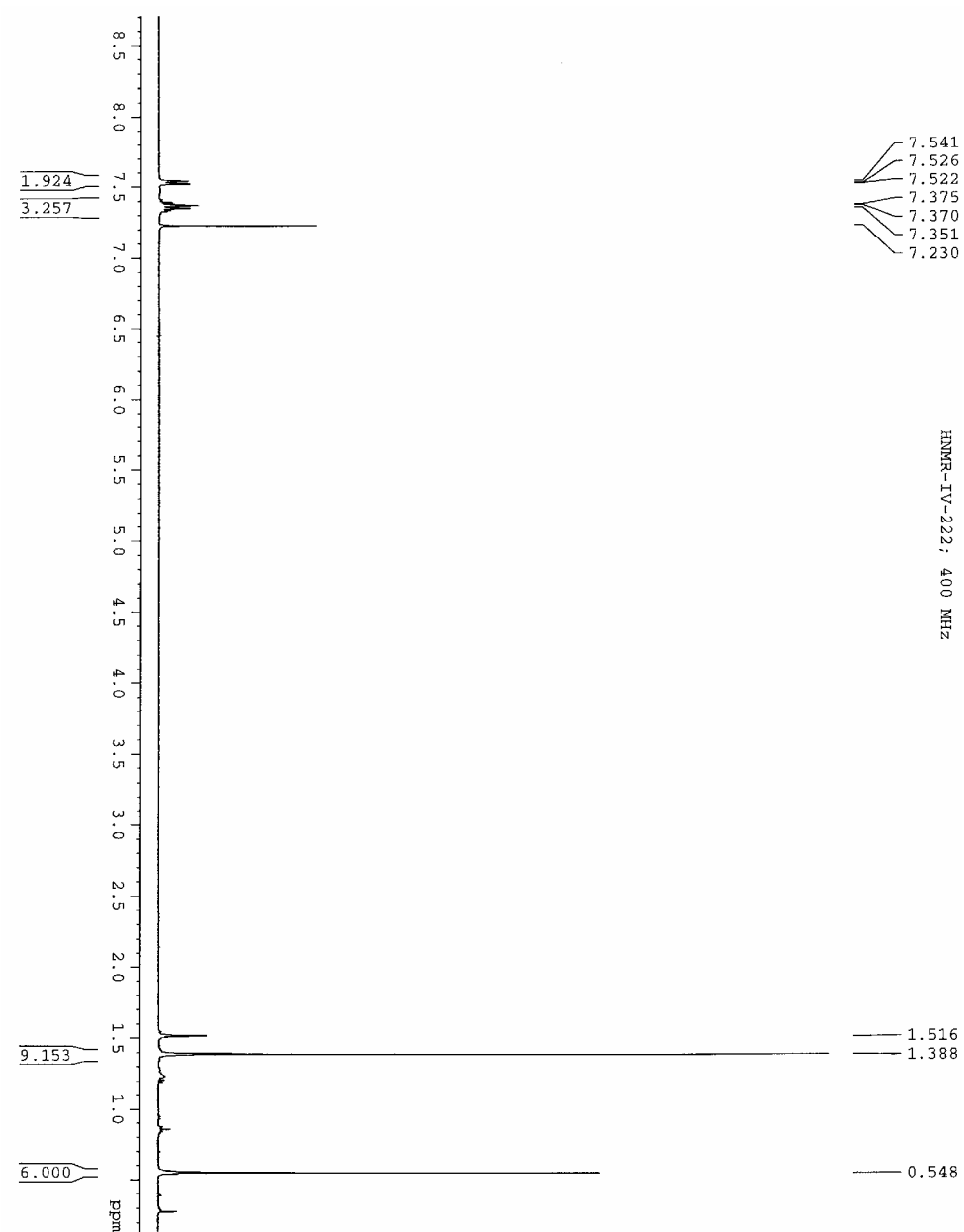


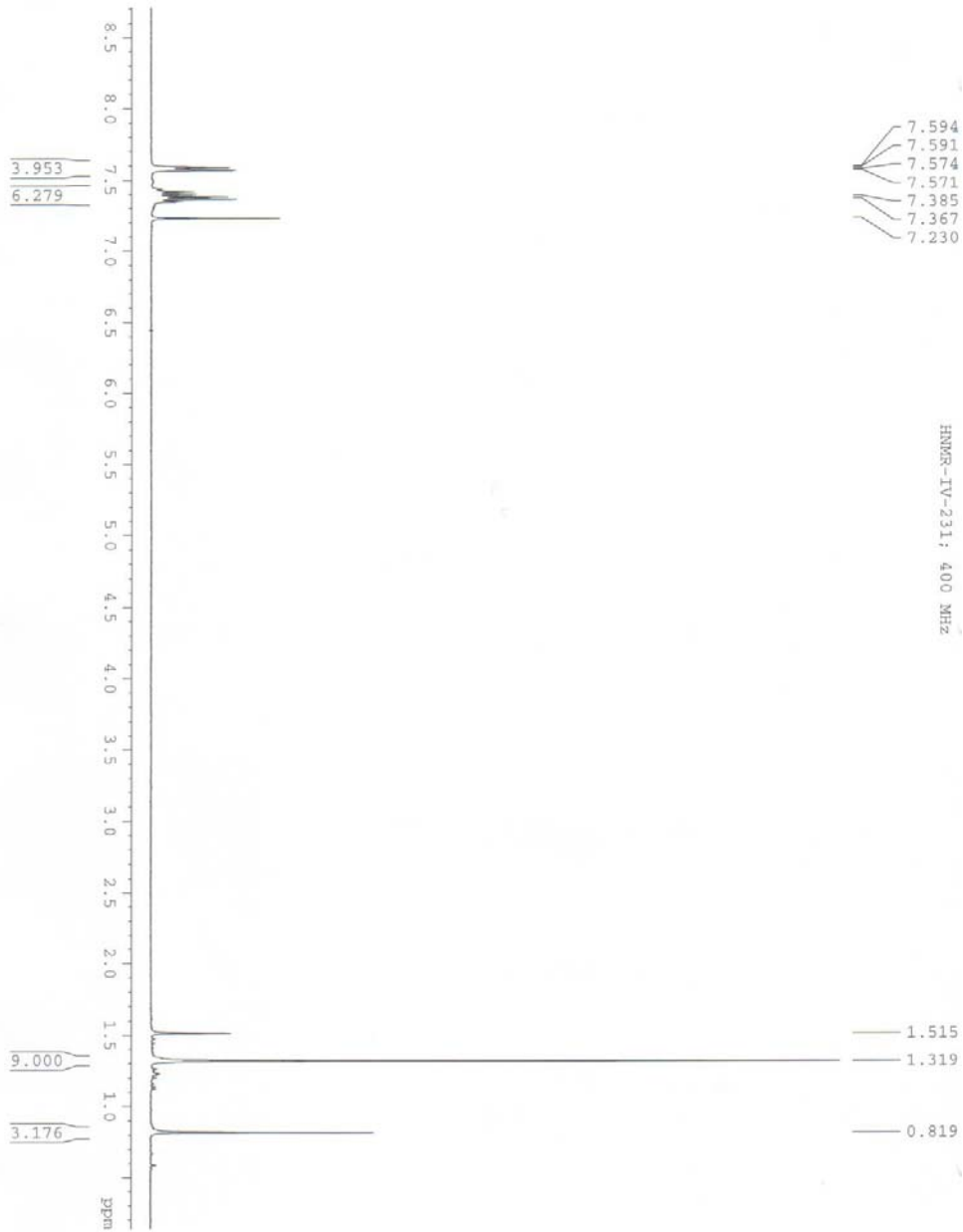
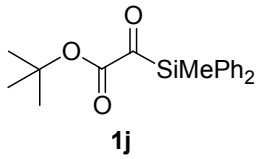
1h

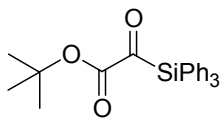




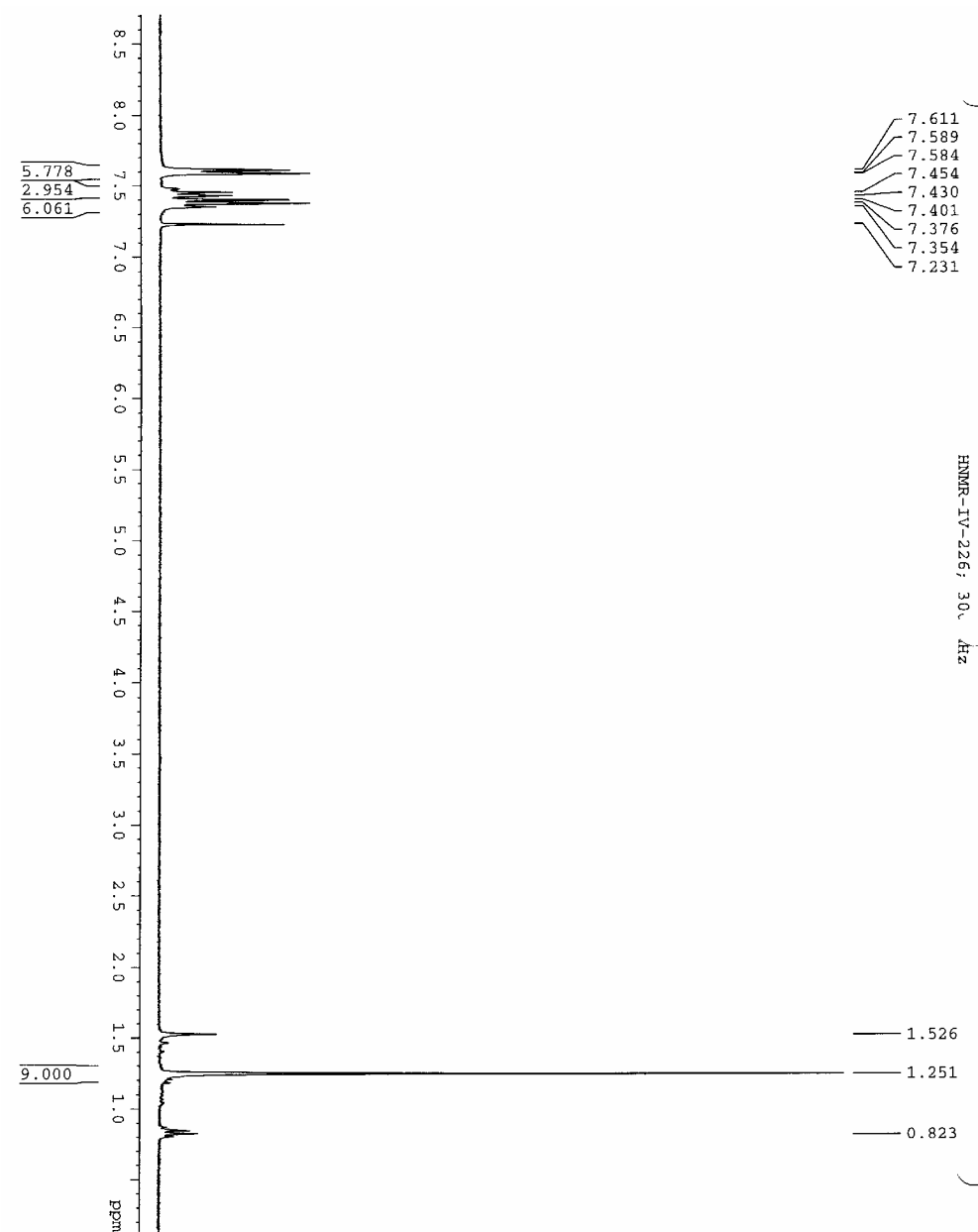
1i

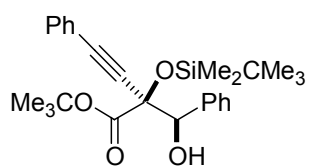




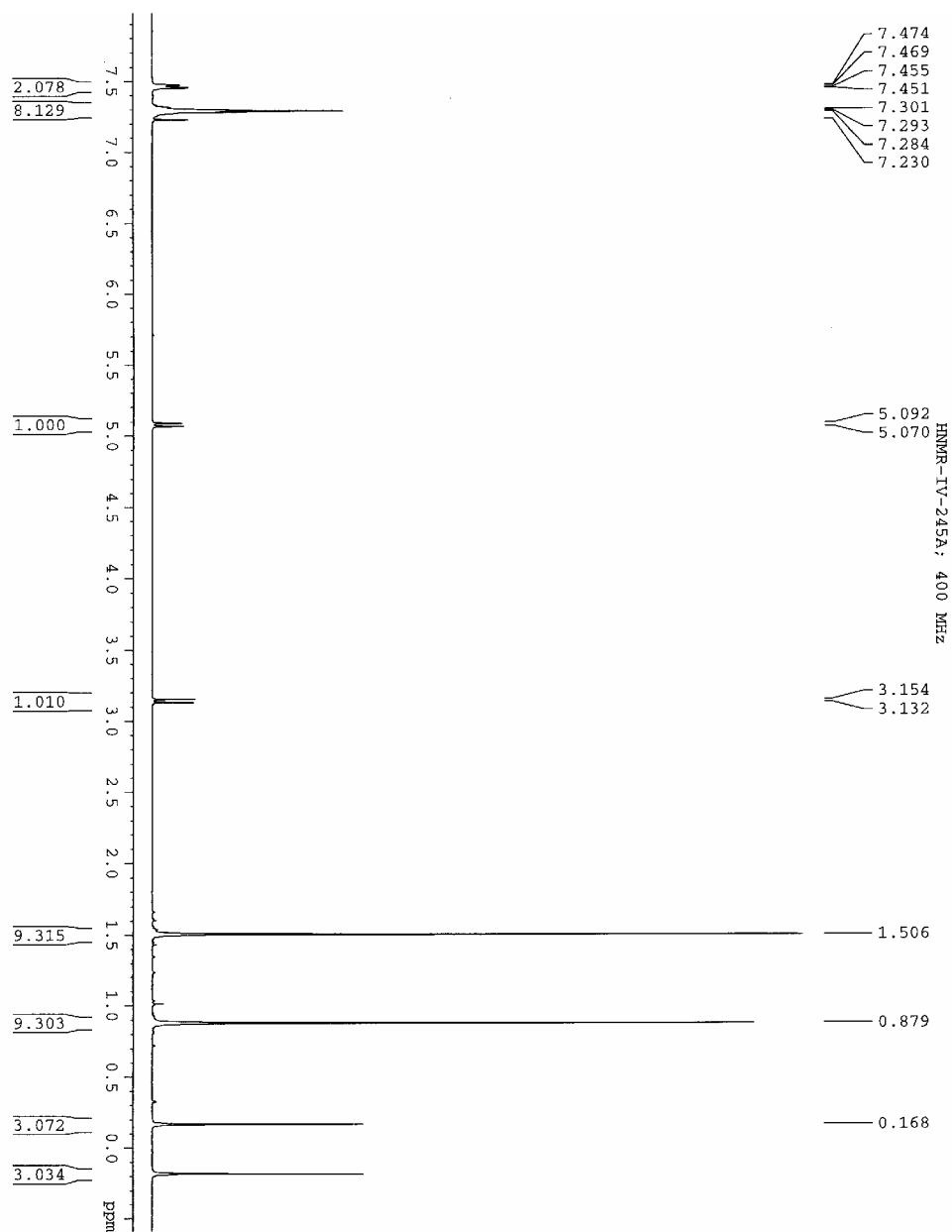


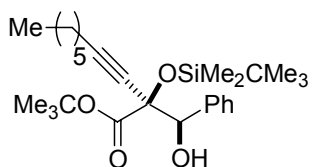
1k



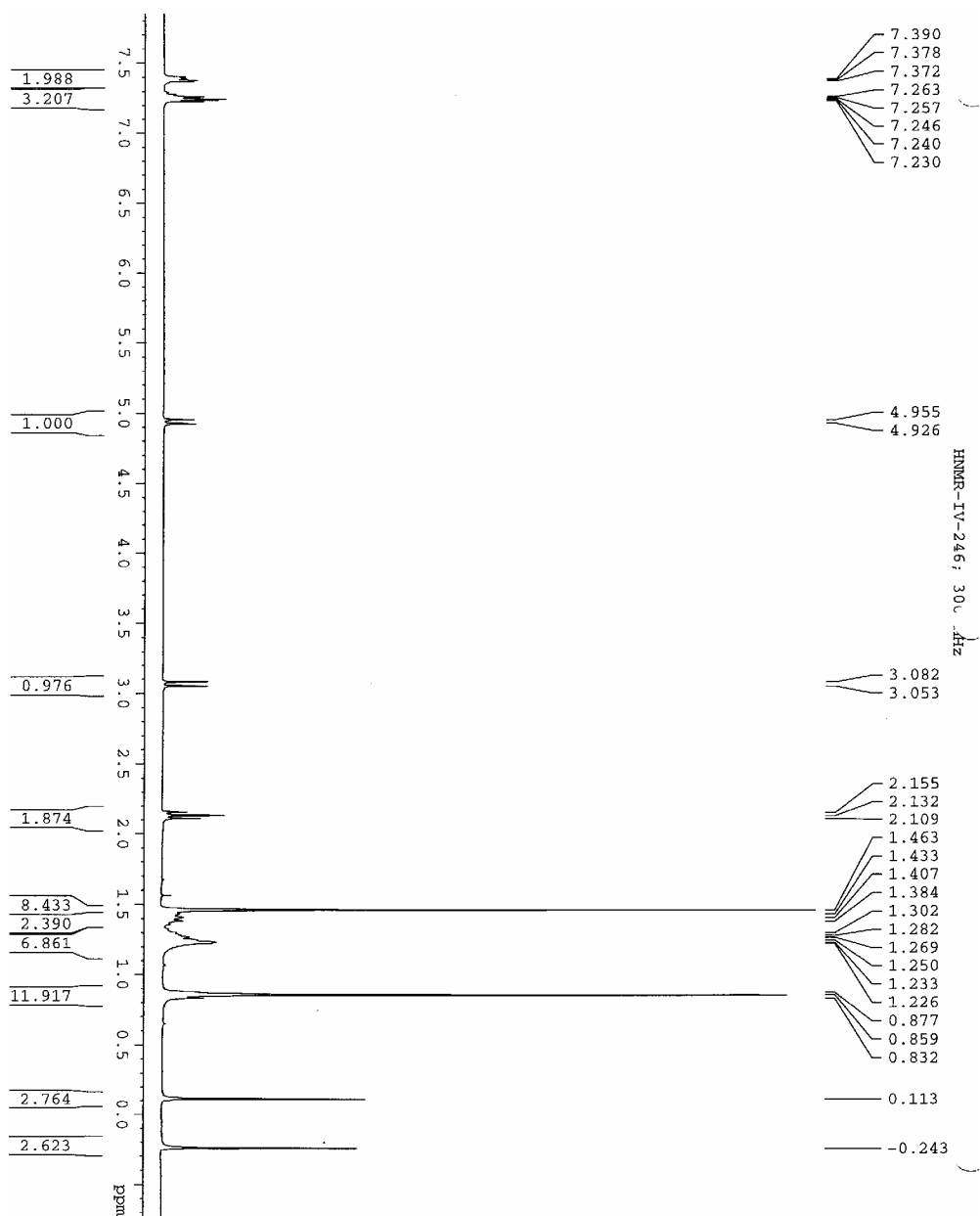


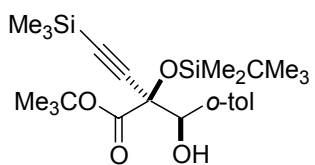
4a



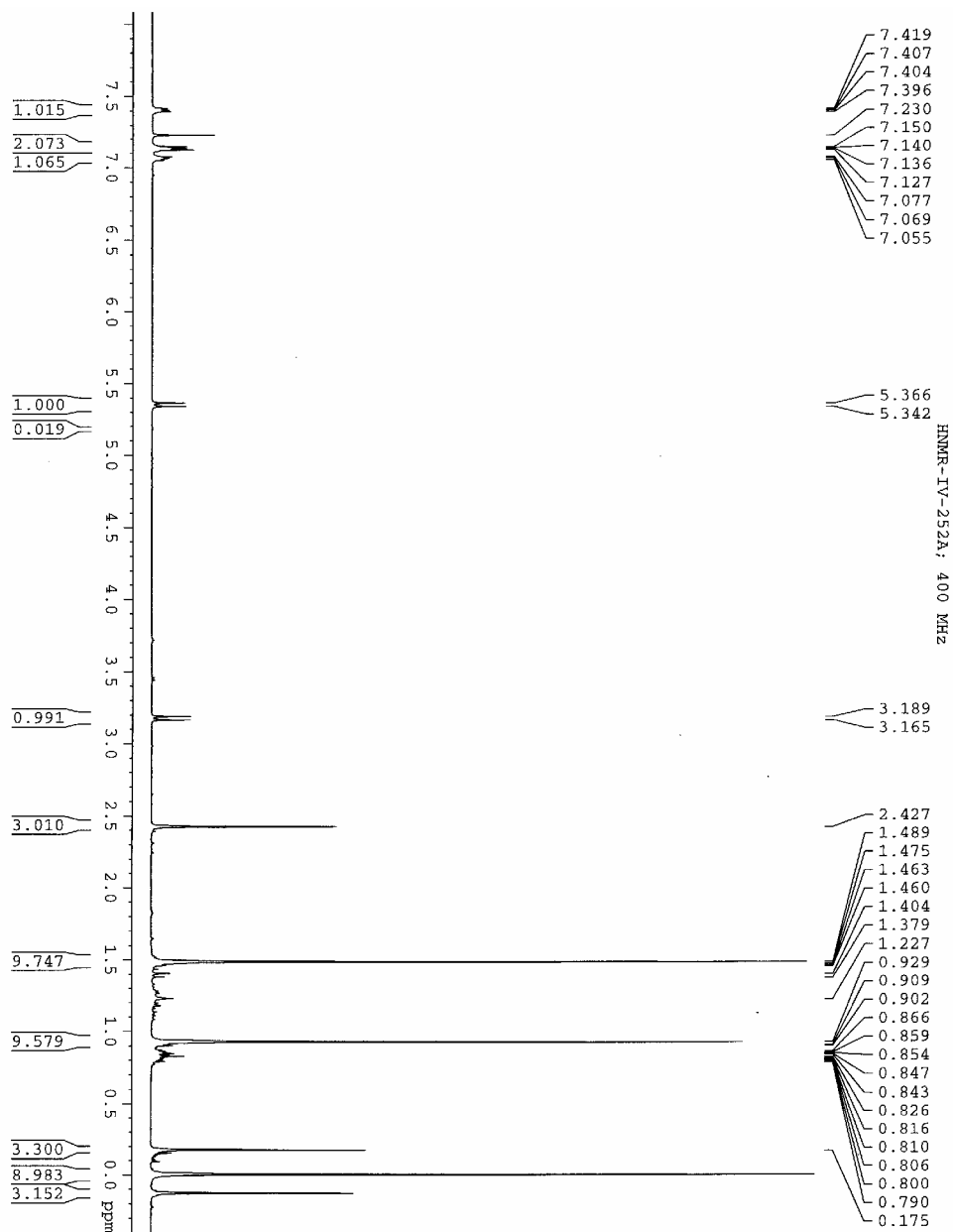


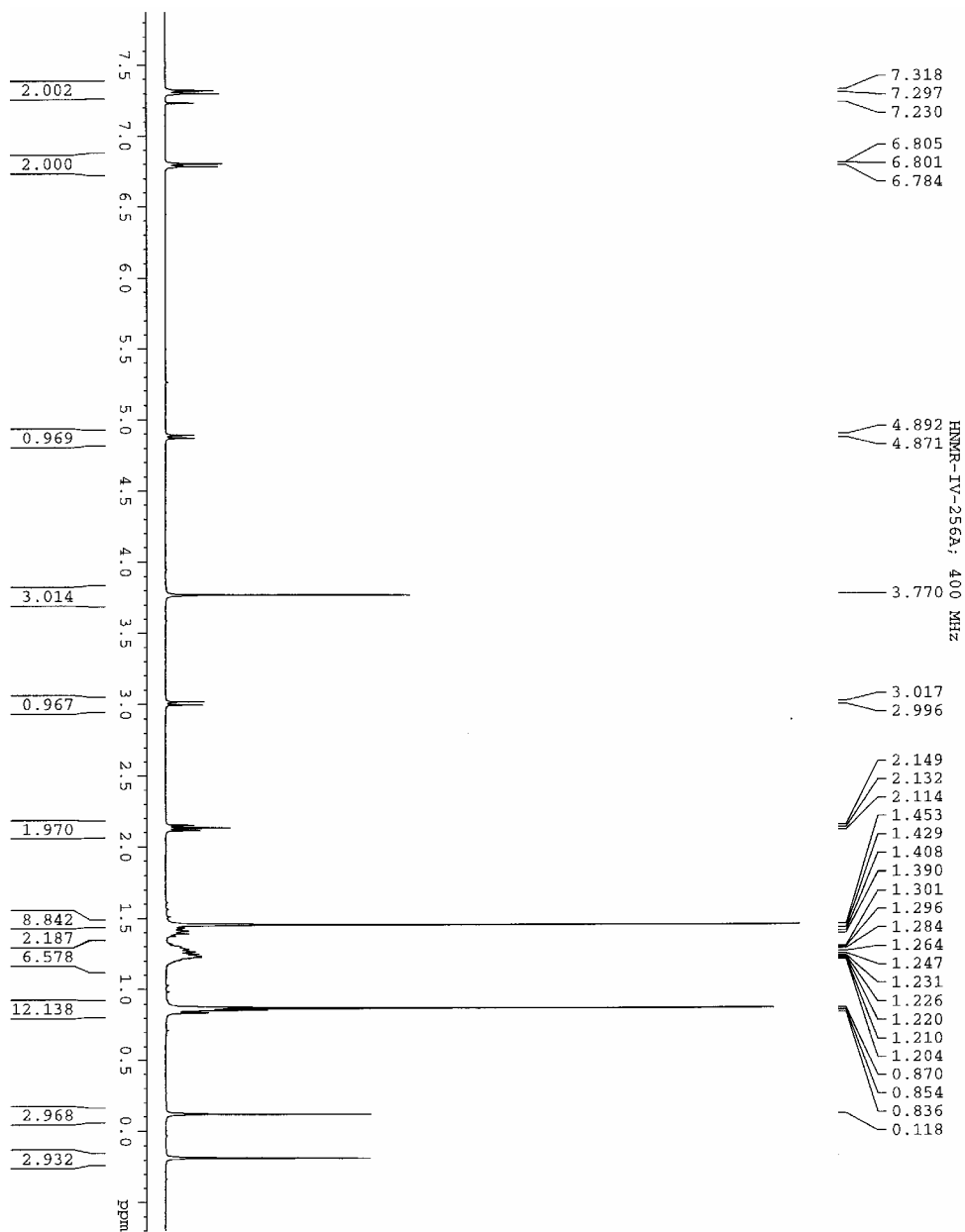
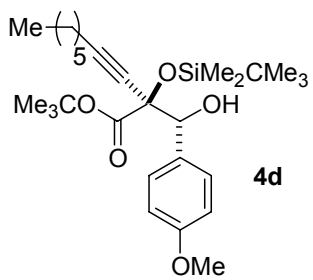
4b

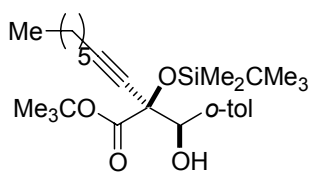




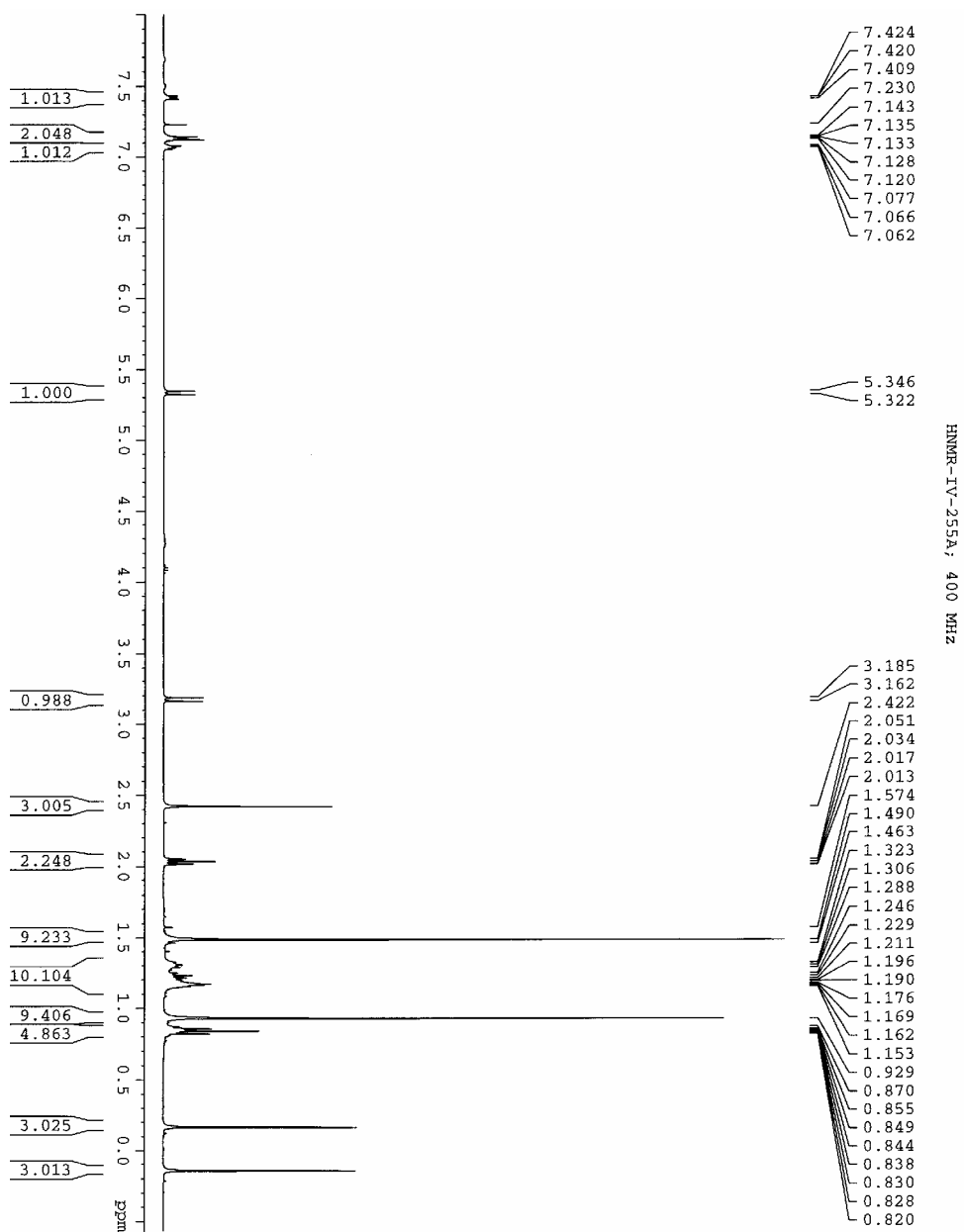
4c

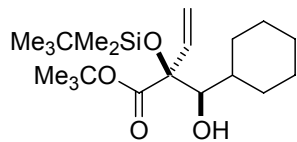




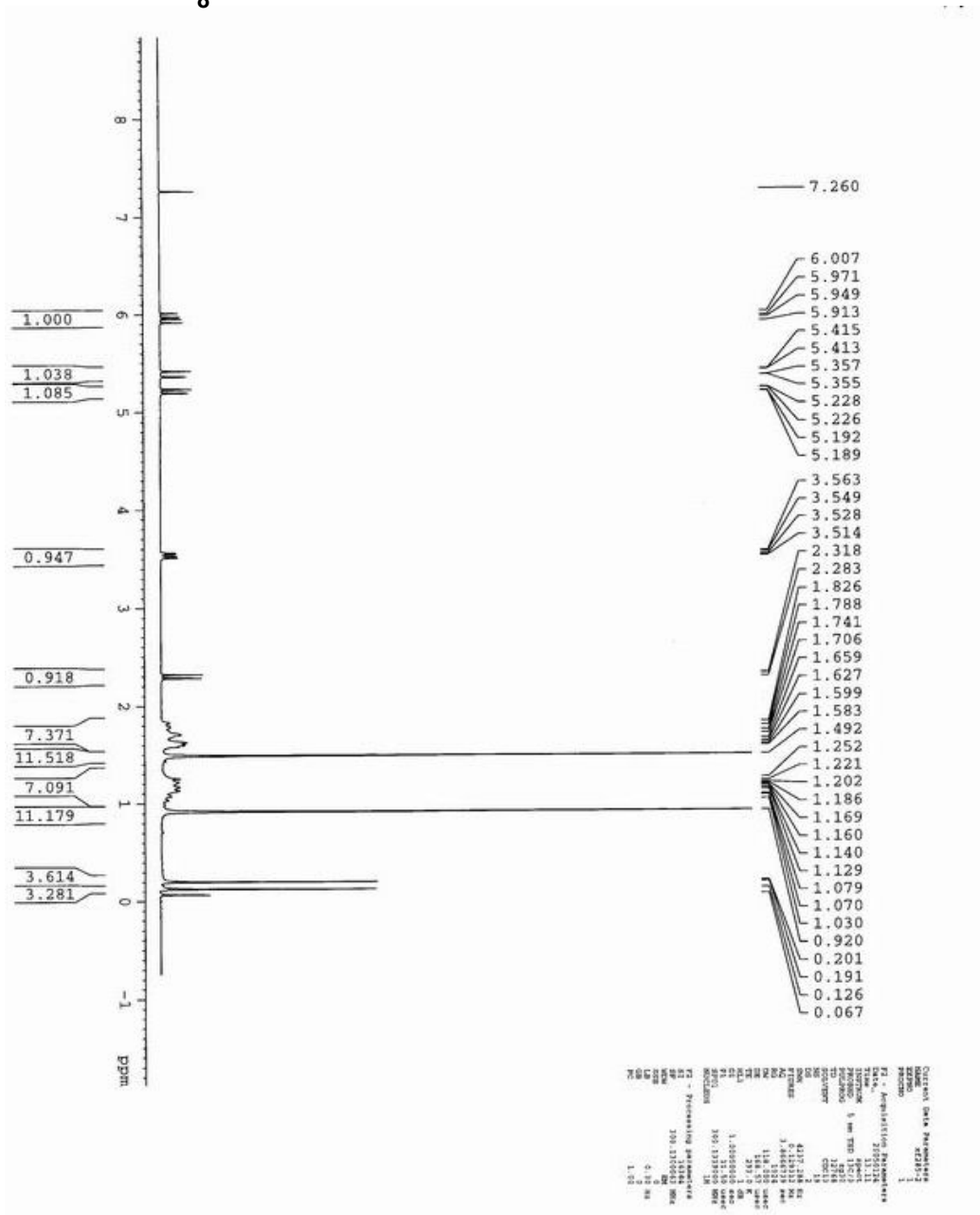


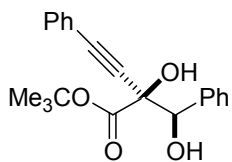
4e



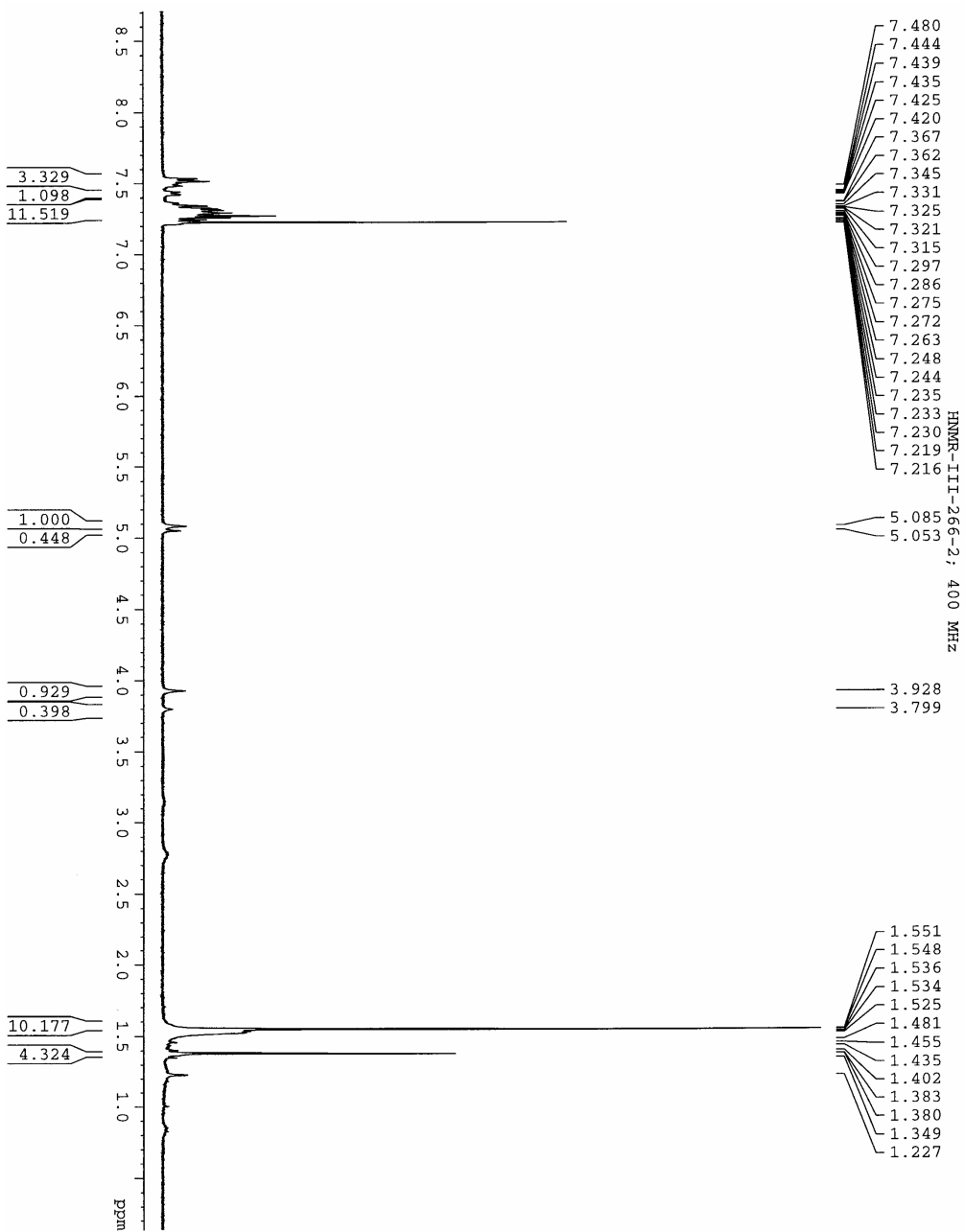


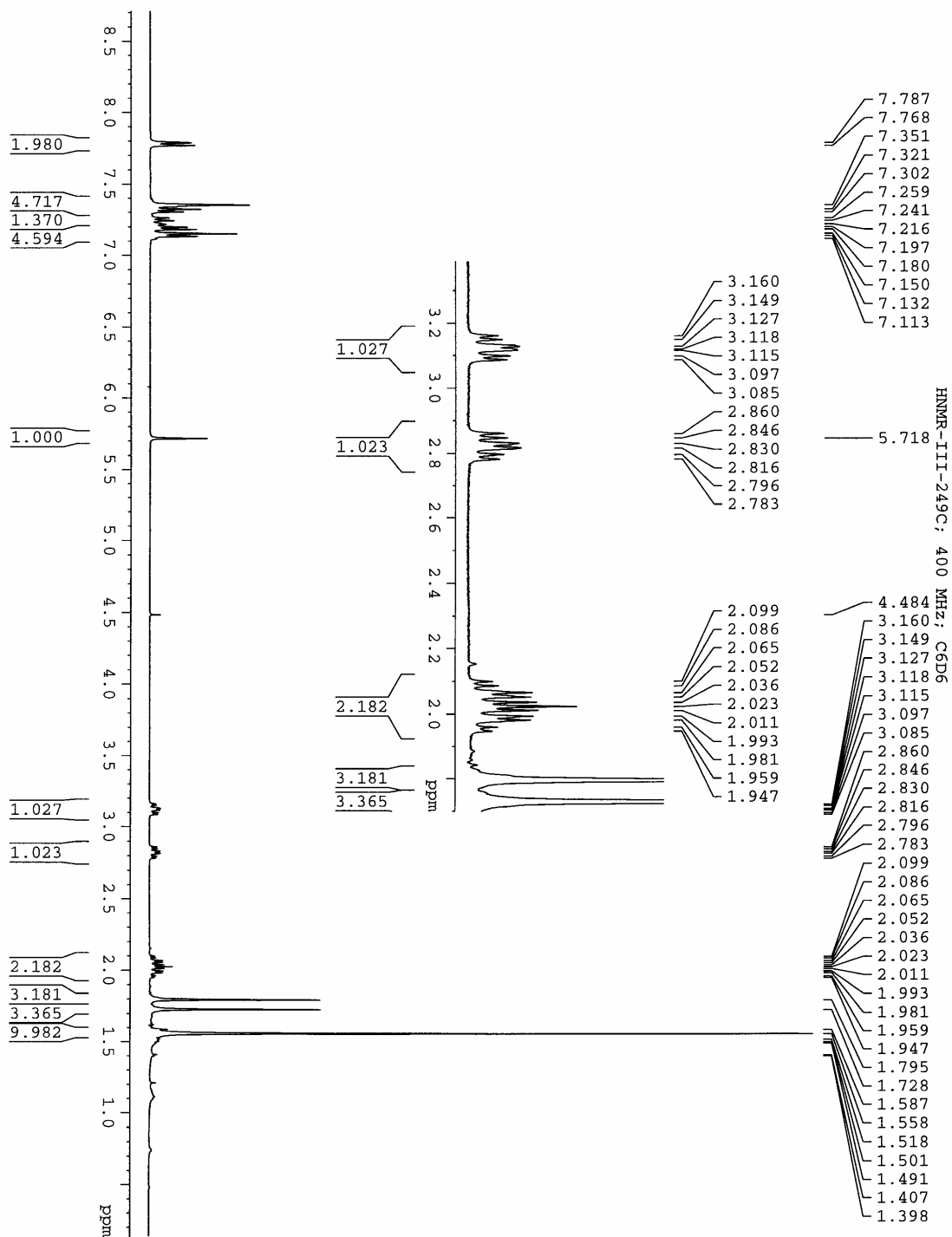
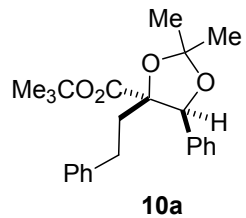
8

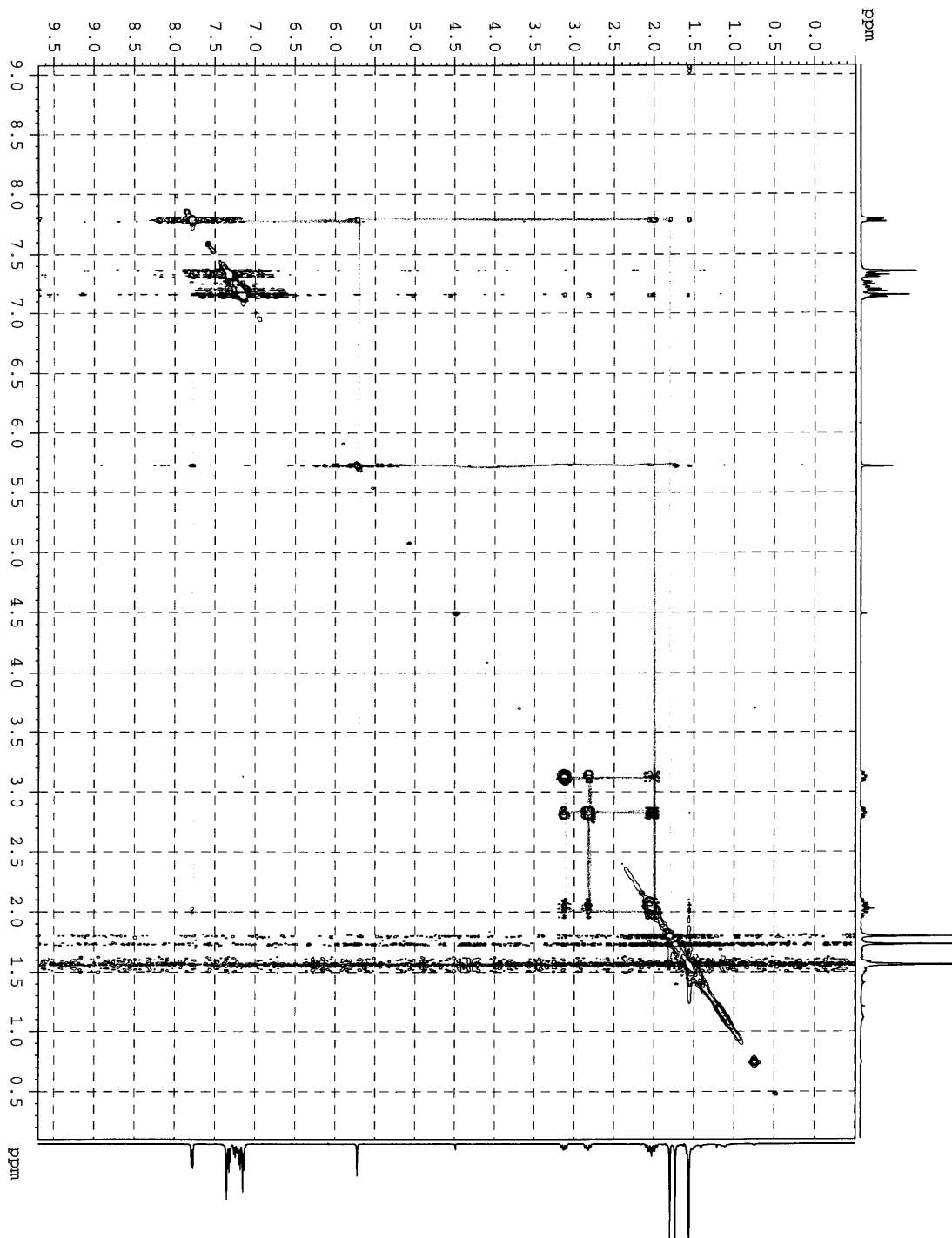
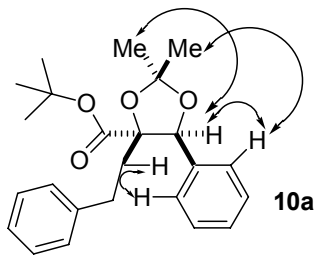


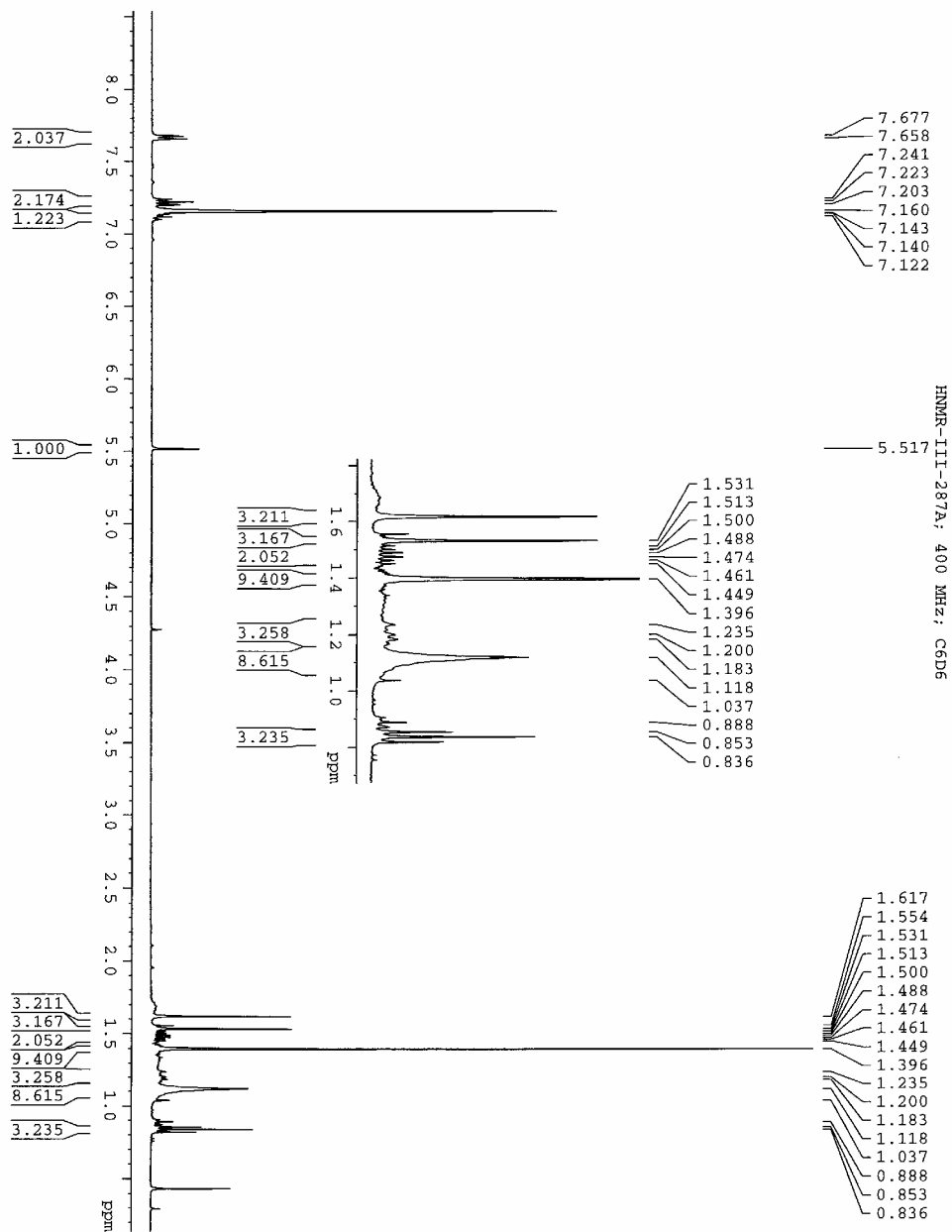
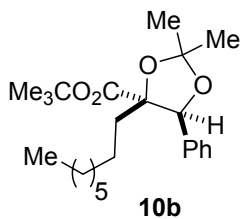


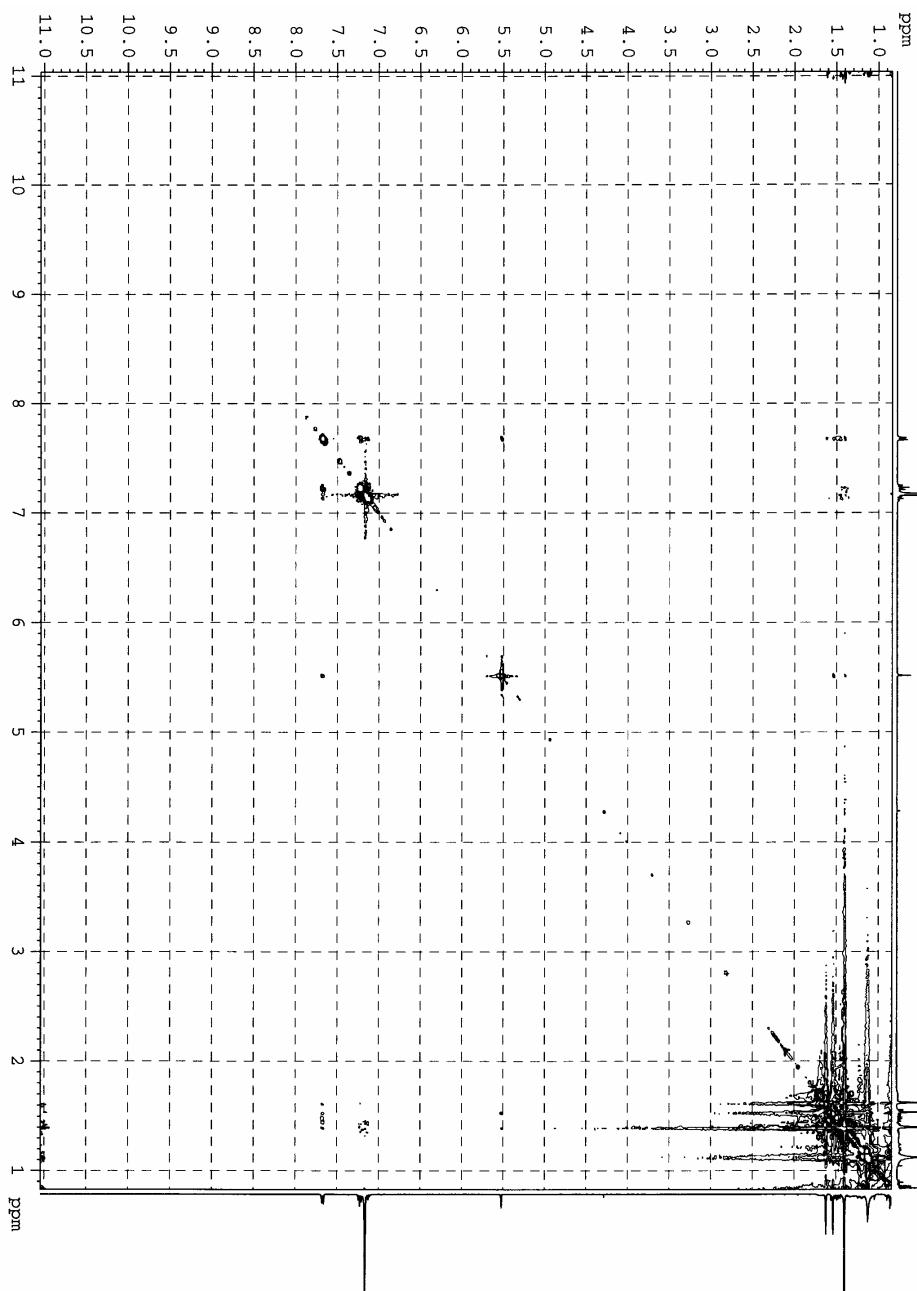
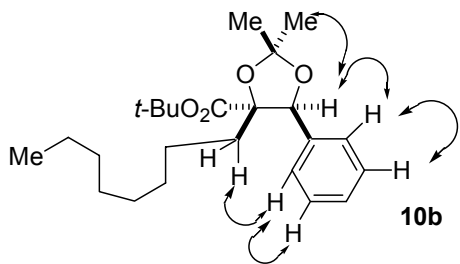
9

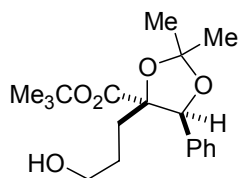




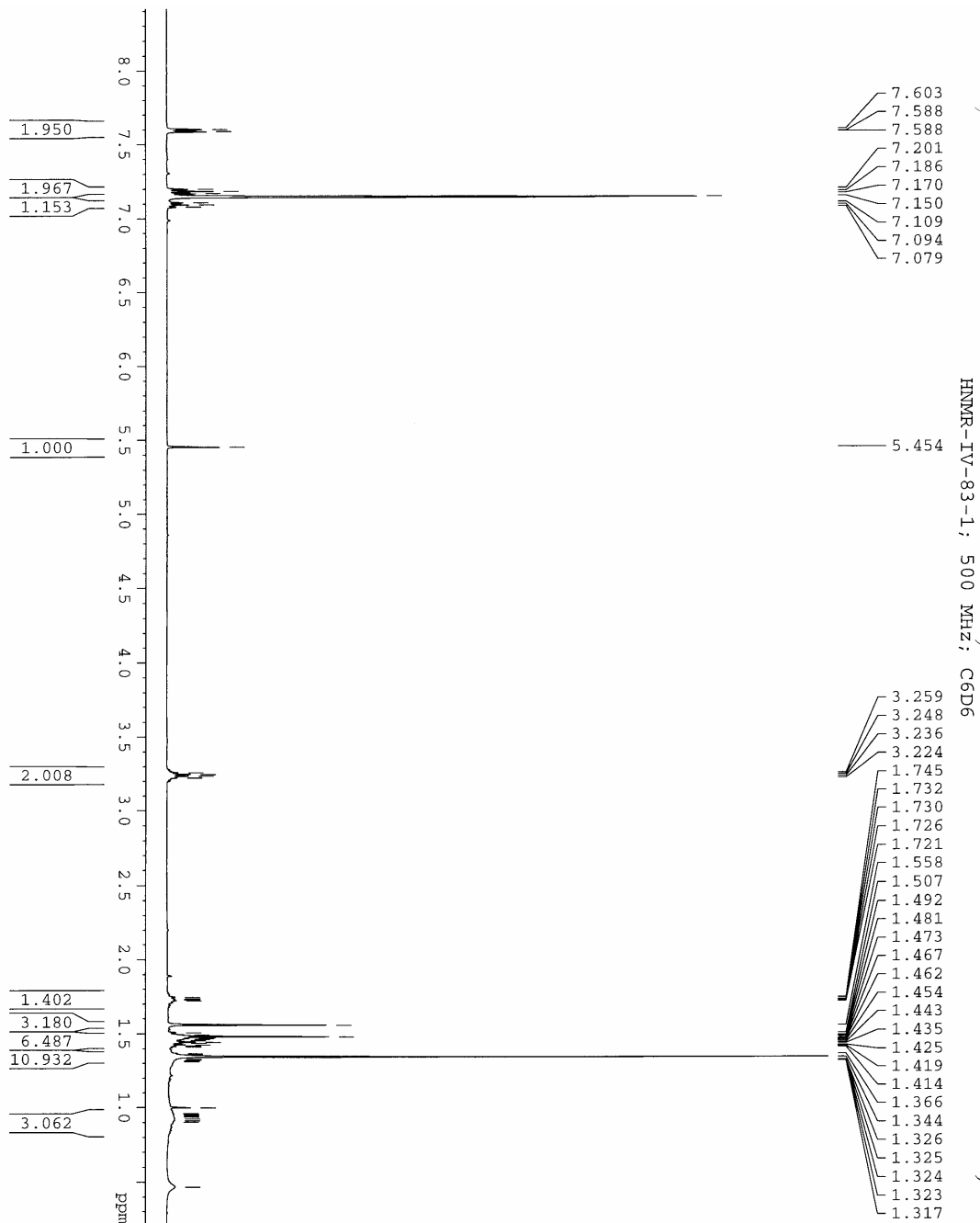


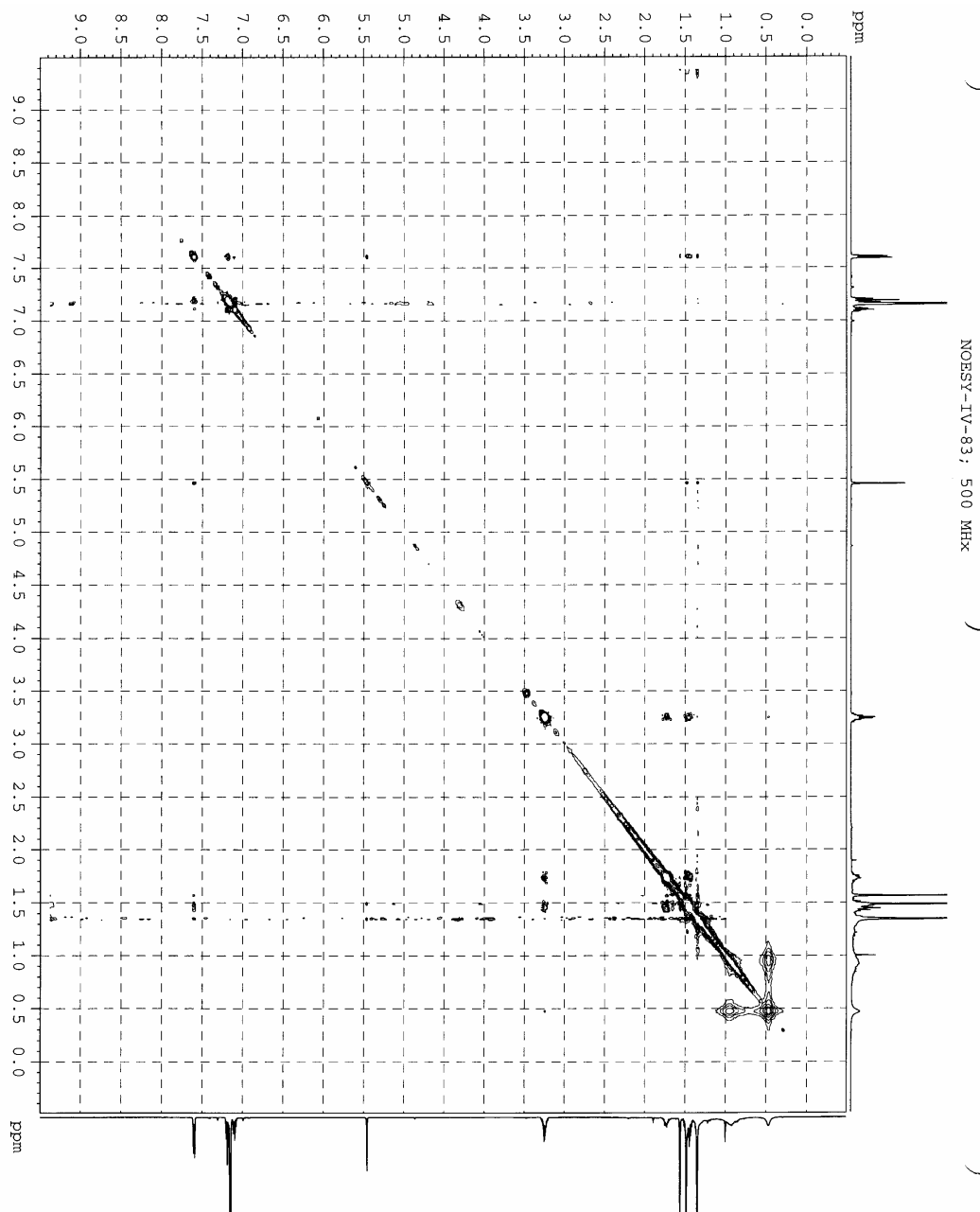
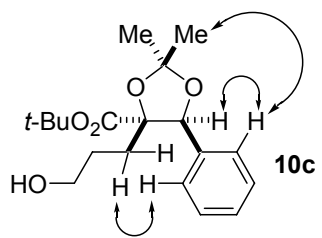


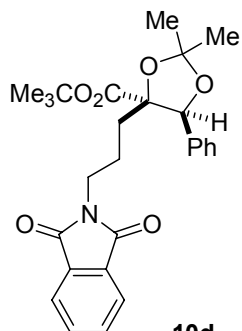




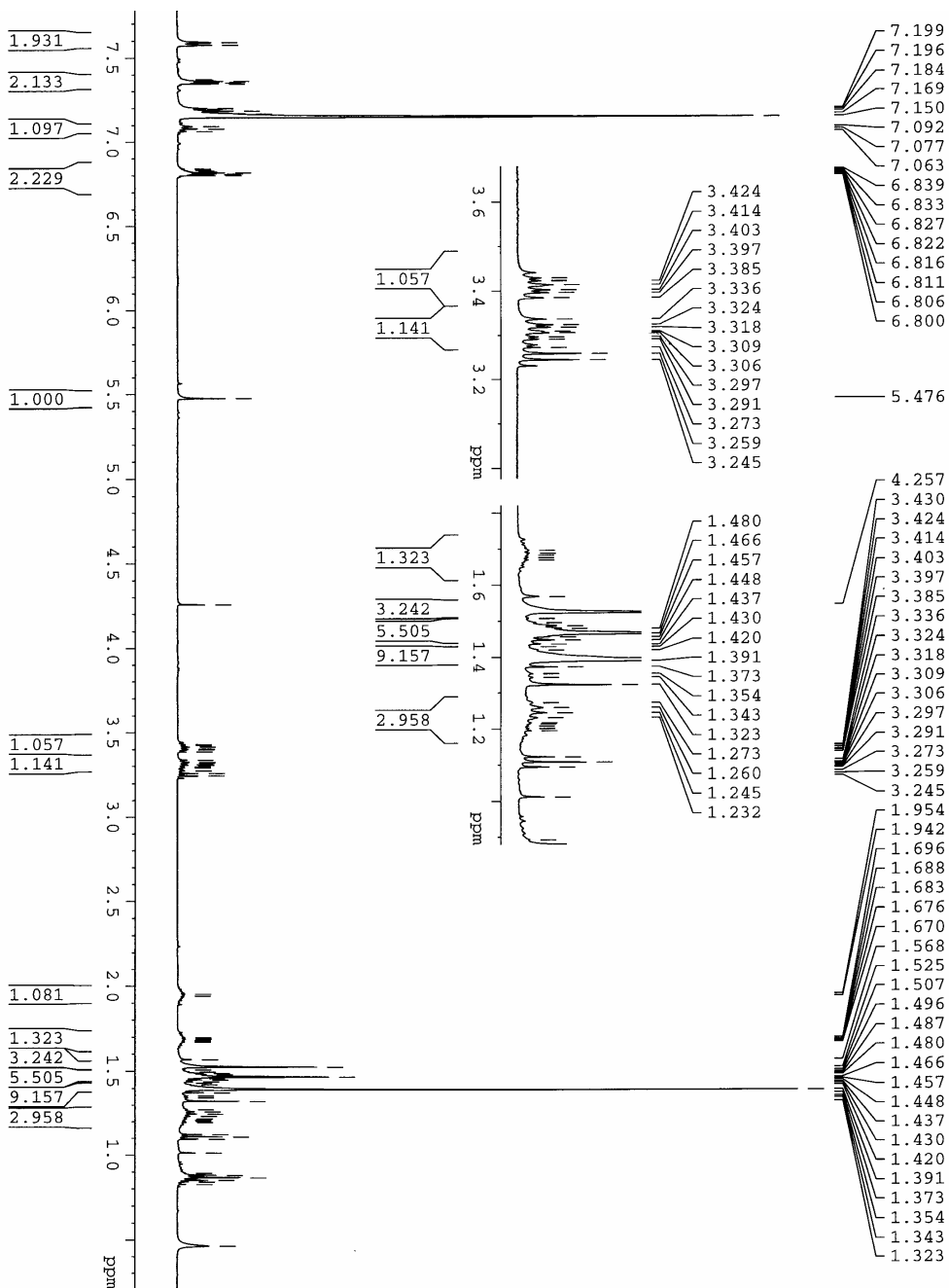
10c



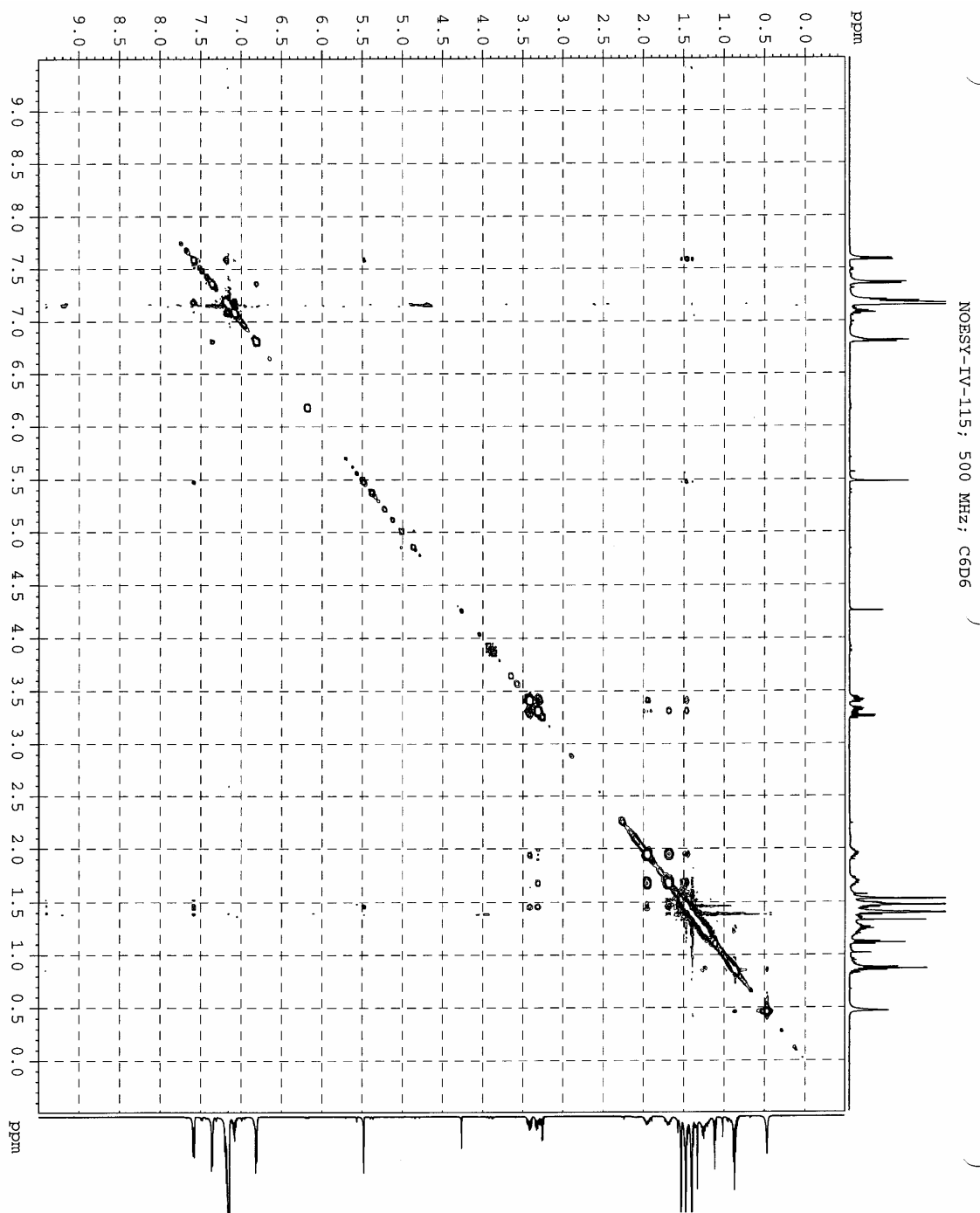
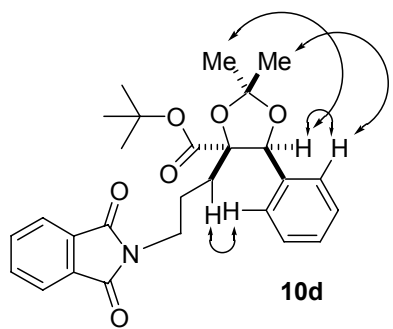


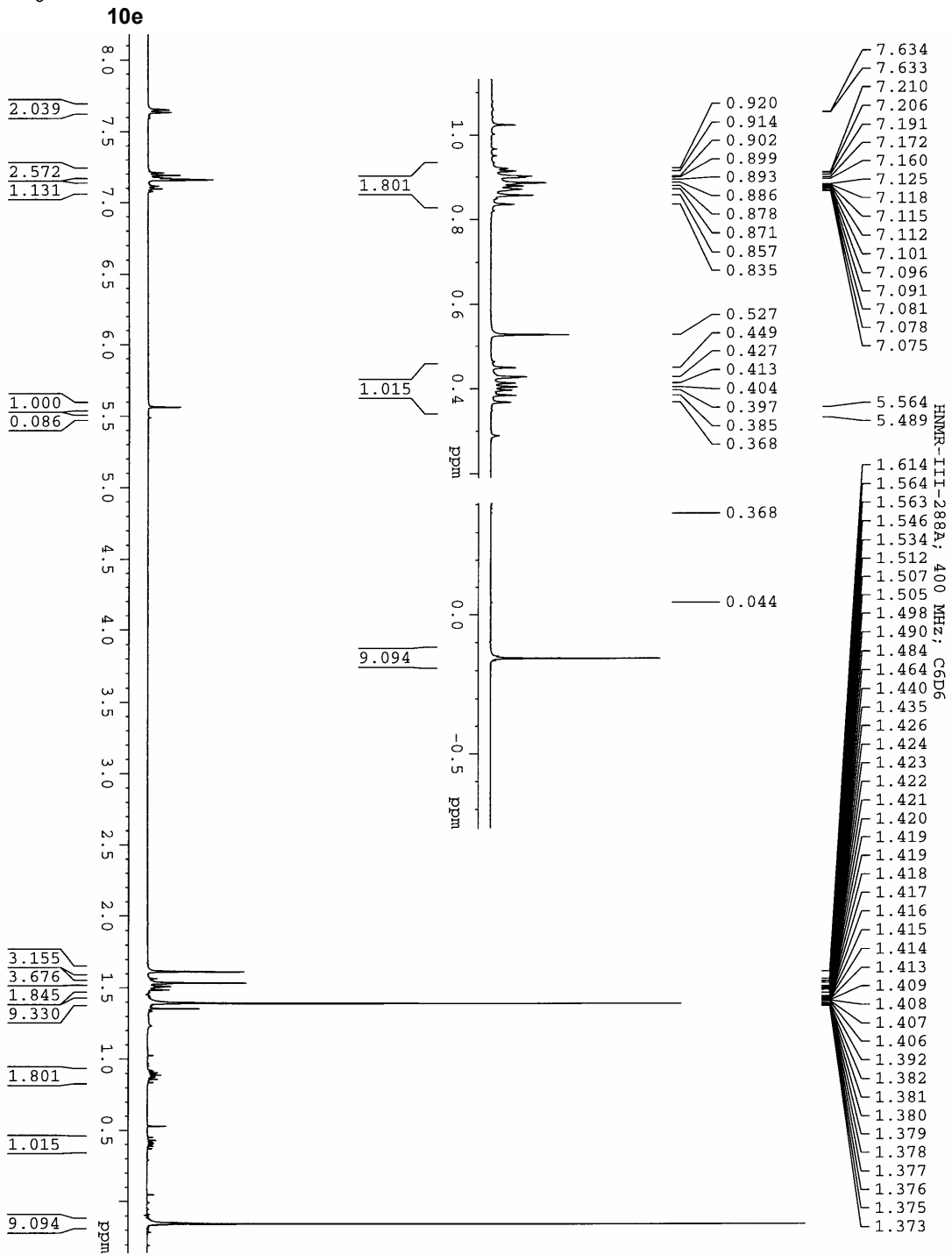
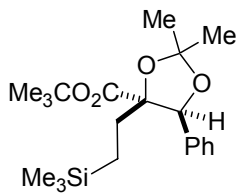


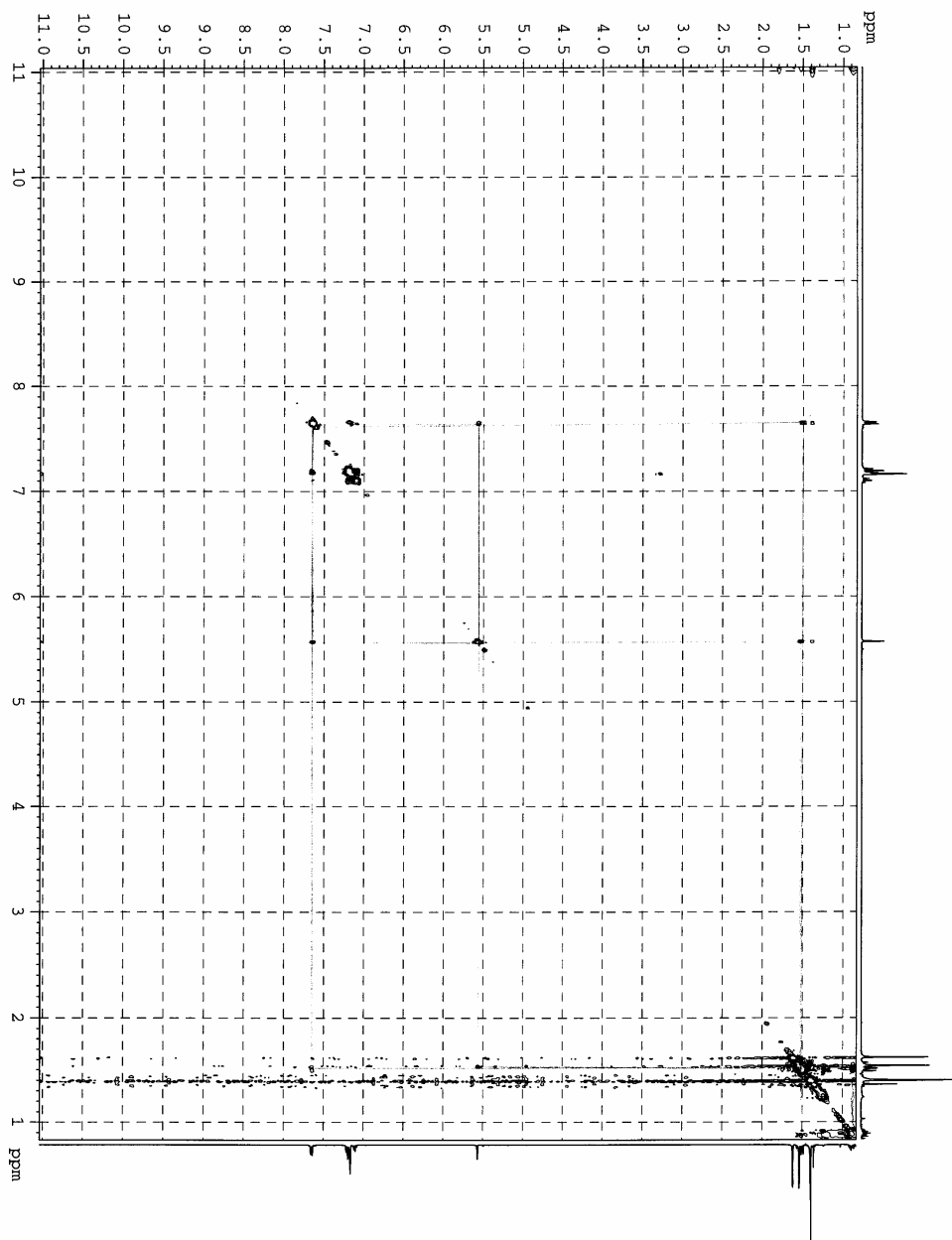
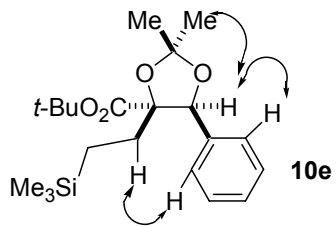
10d

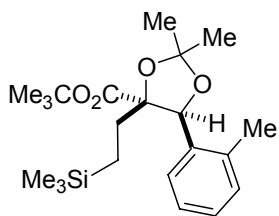


HNMR-IV-115A; 500 MHz; C6D6

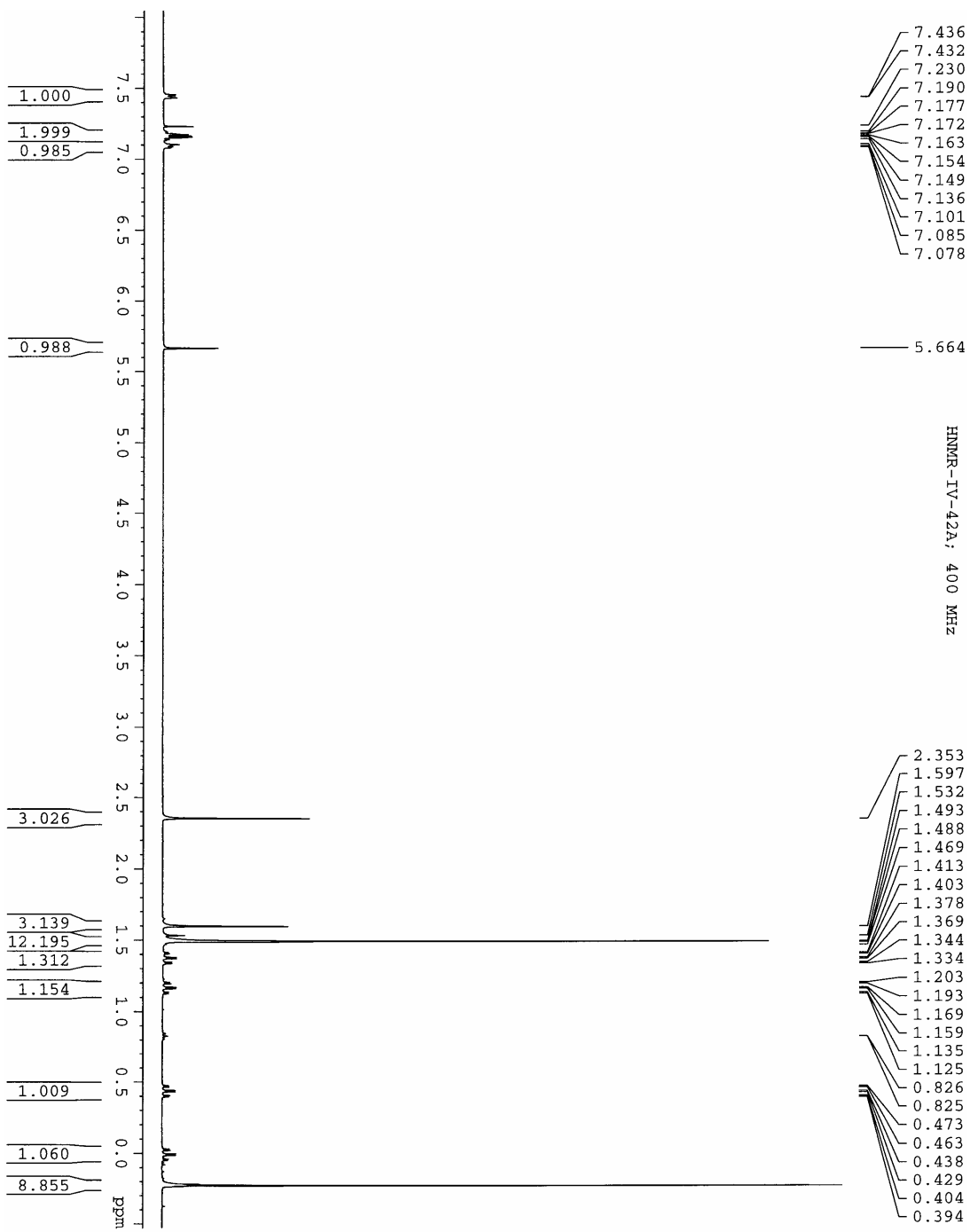


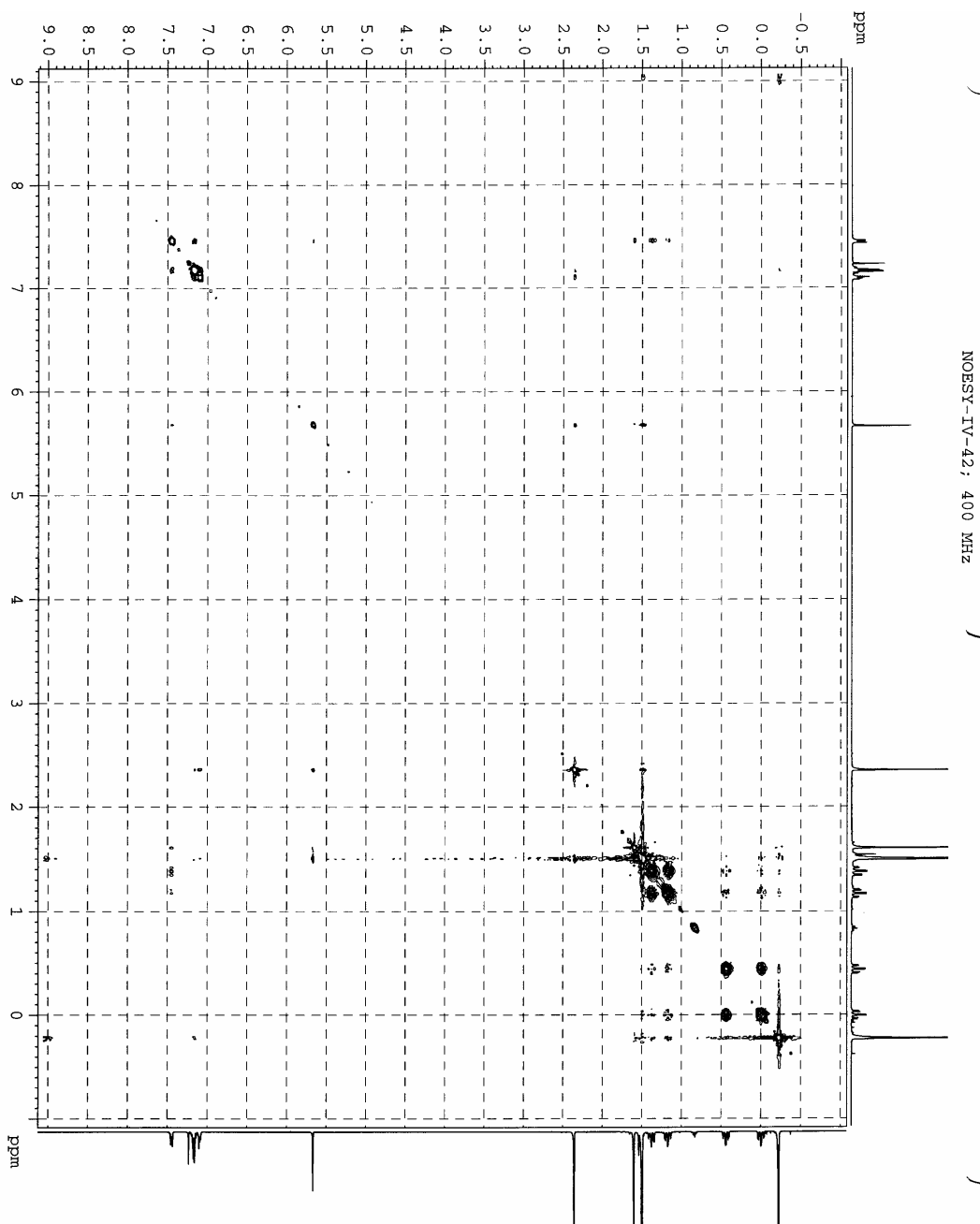
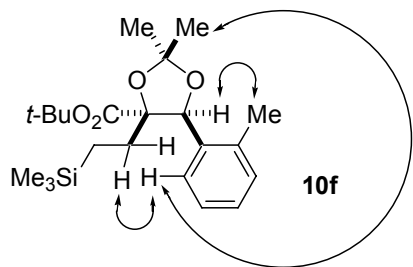


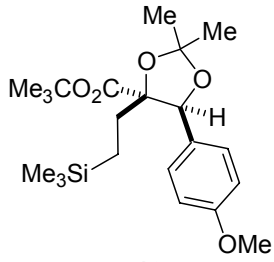




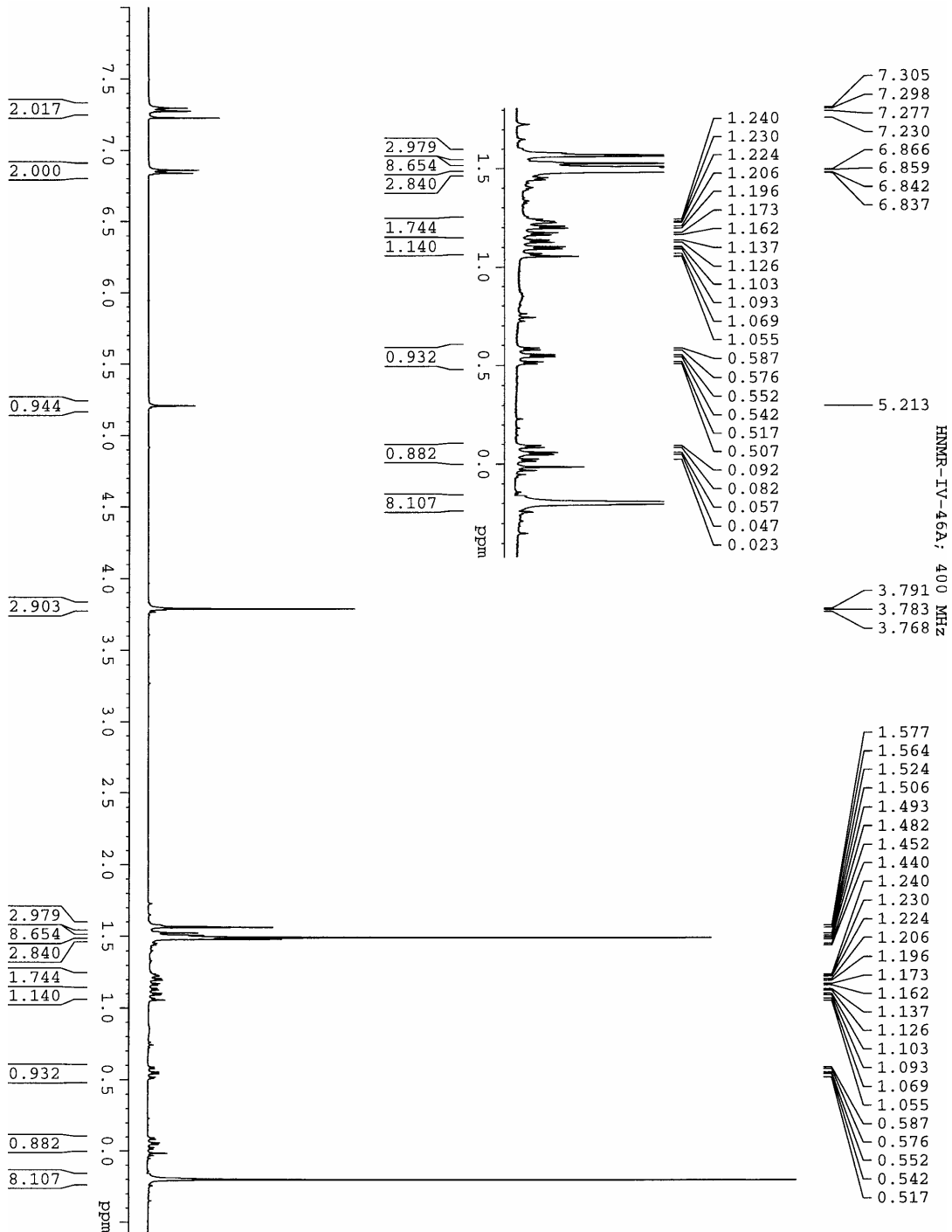
10f

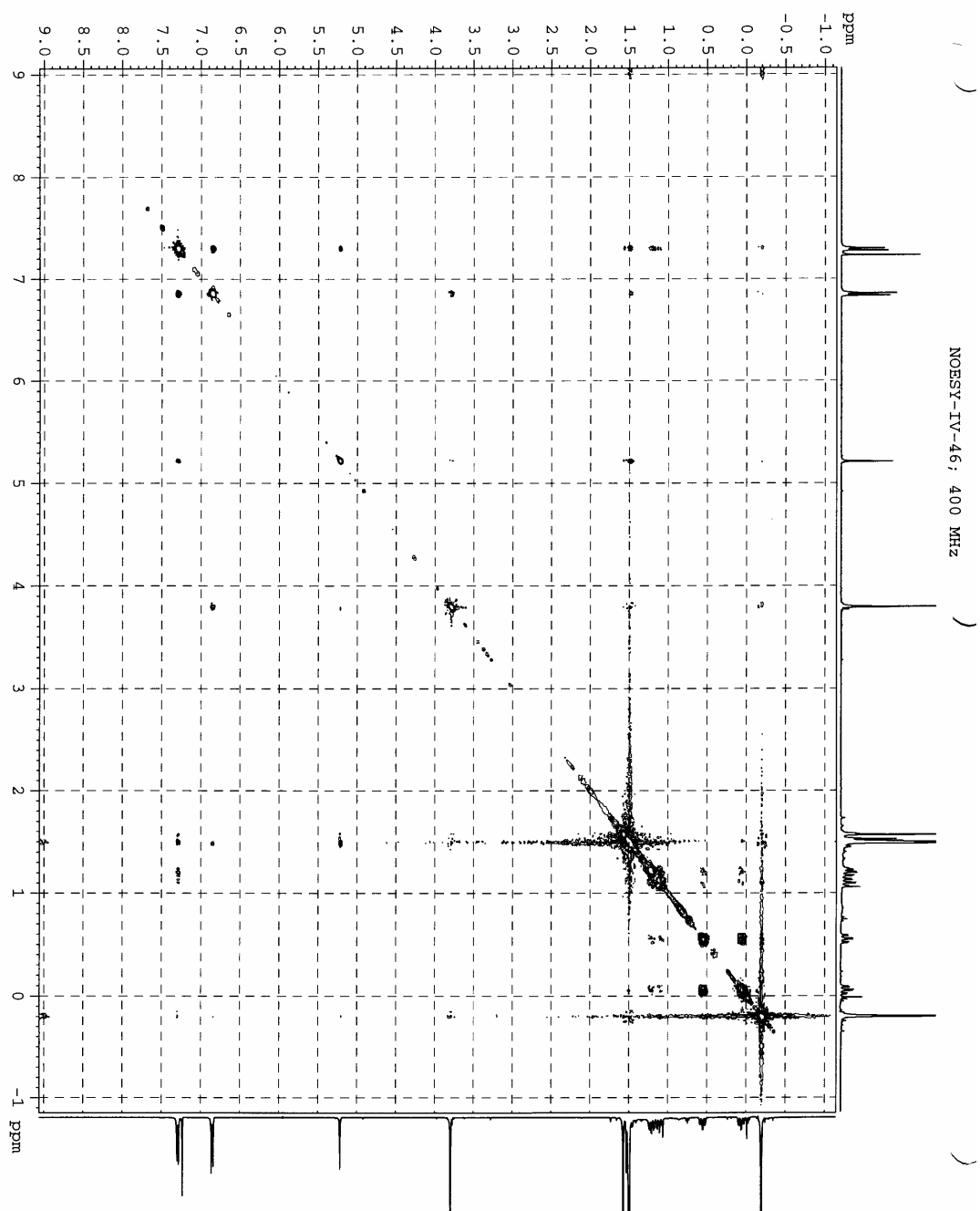
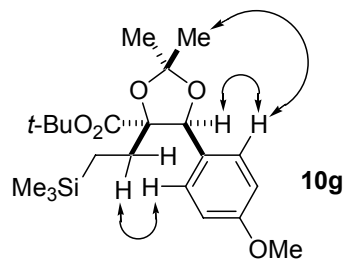


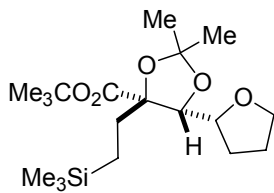




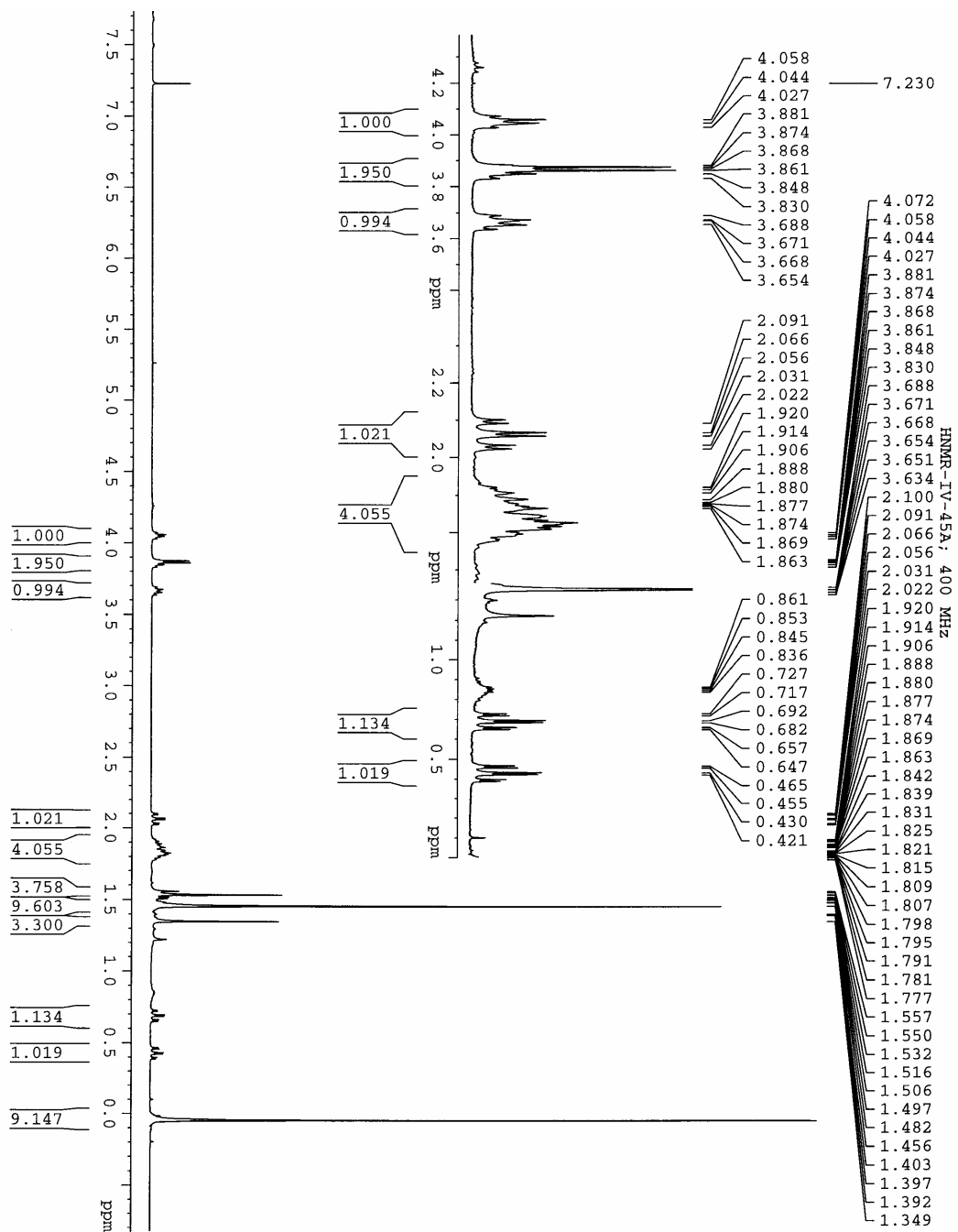
10g

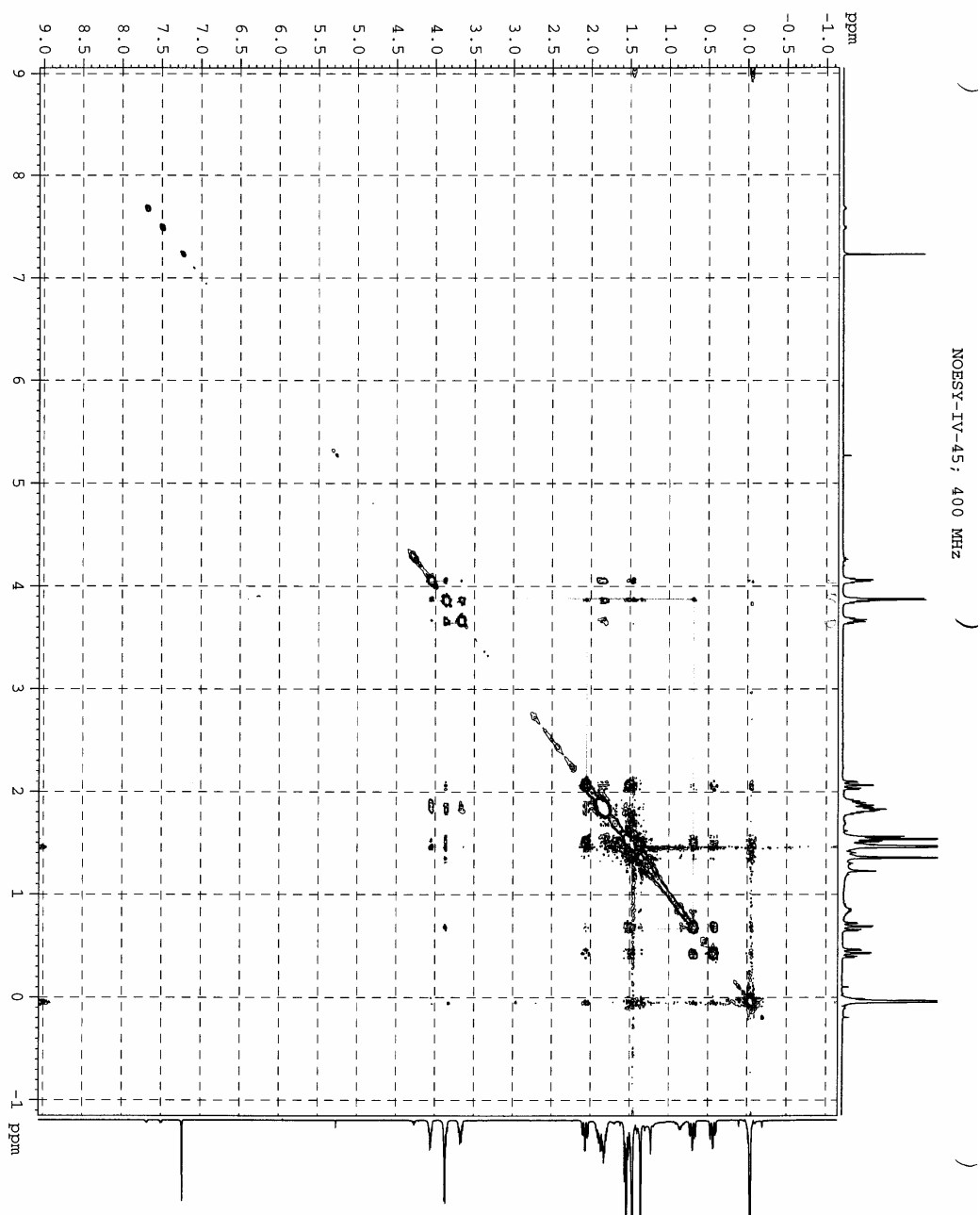
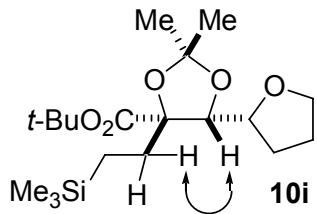


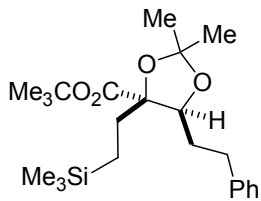




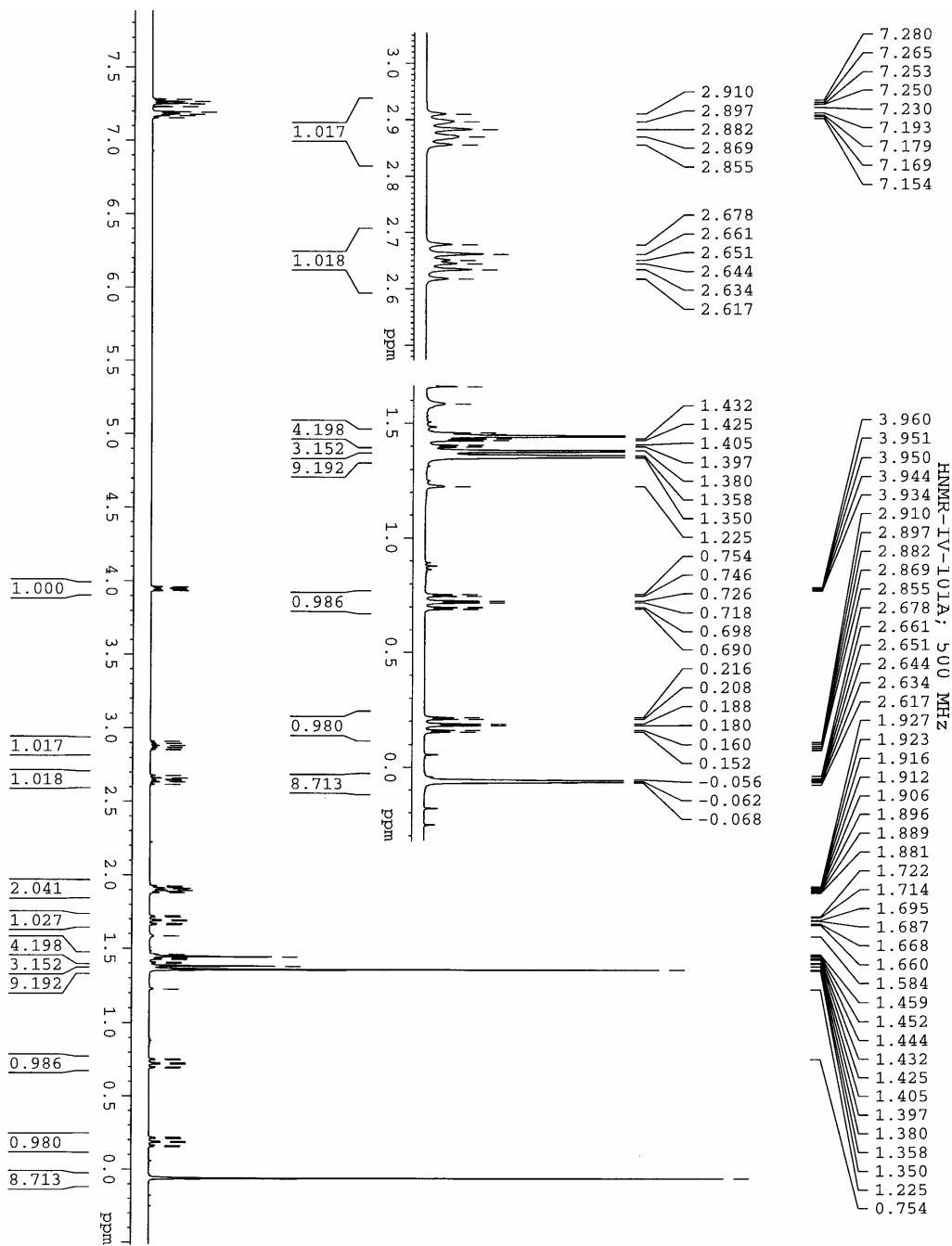
10i

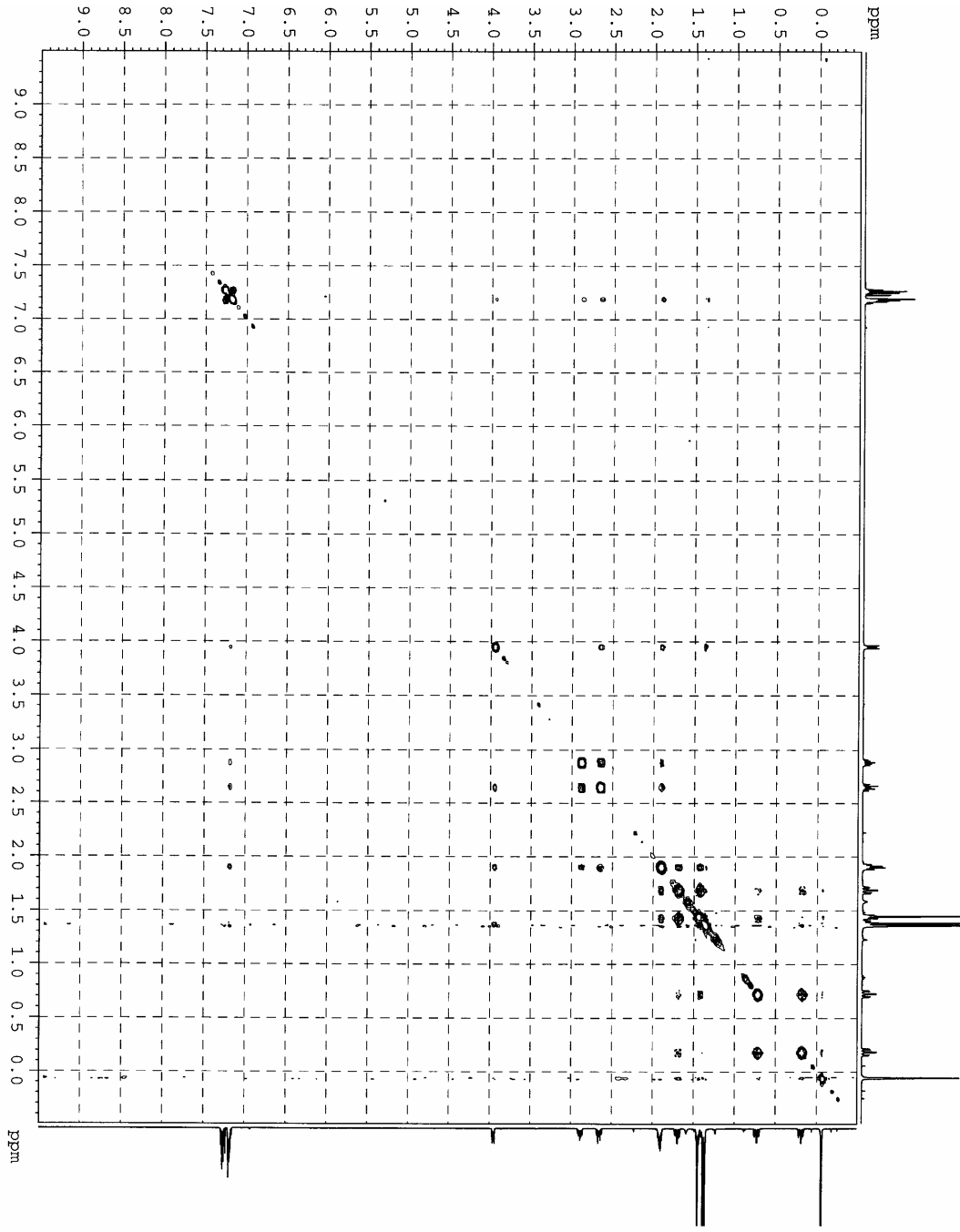
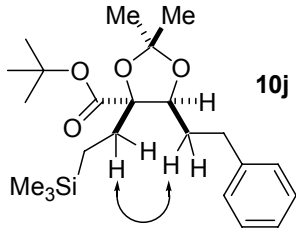


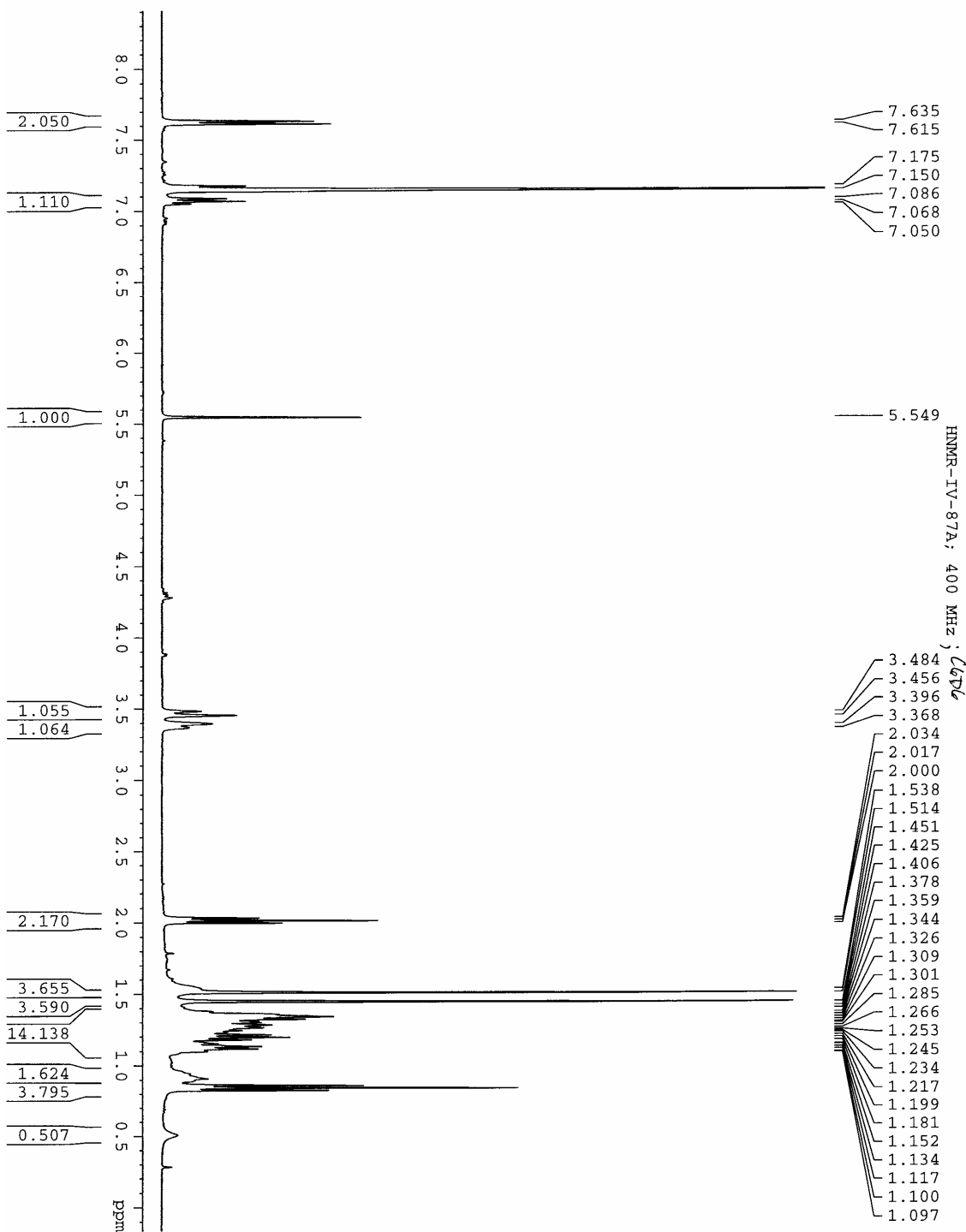
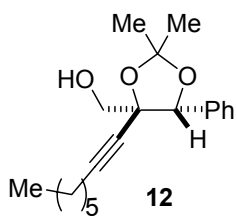


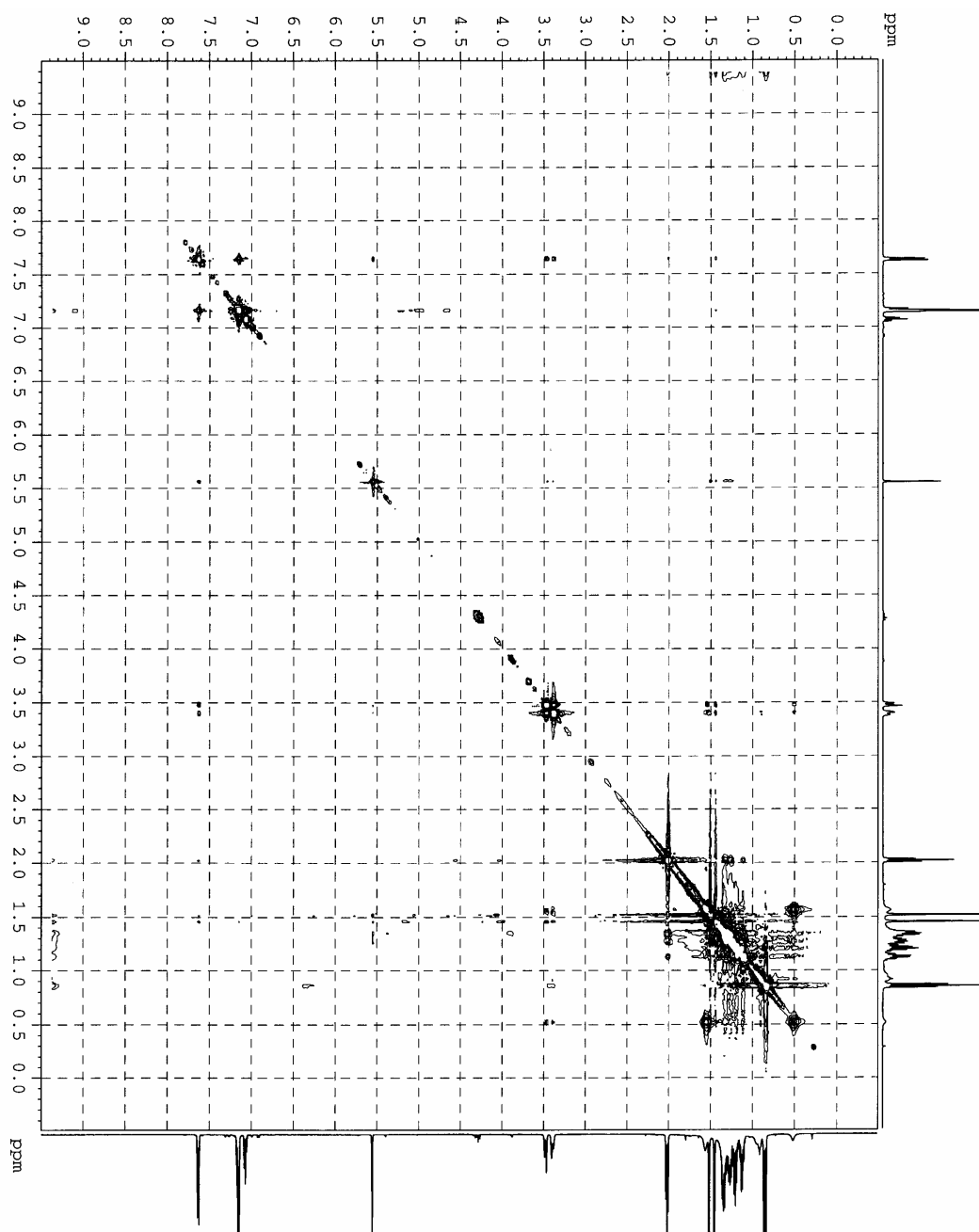
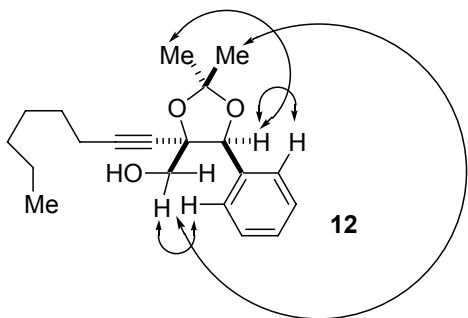


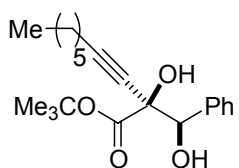
10j



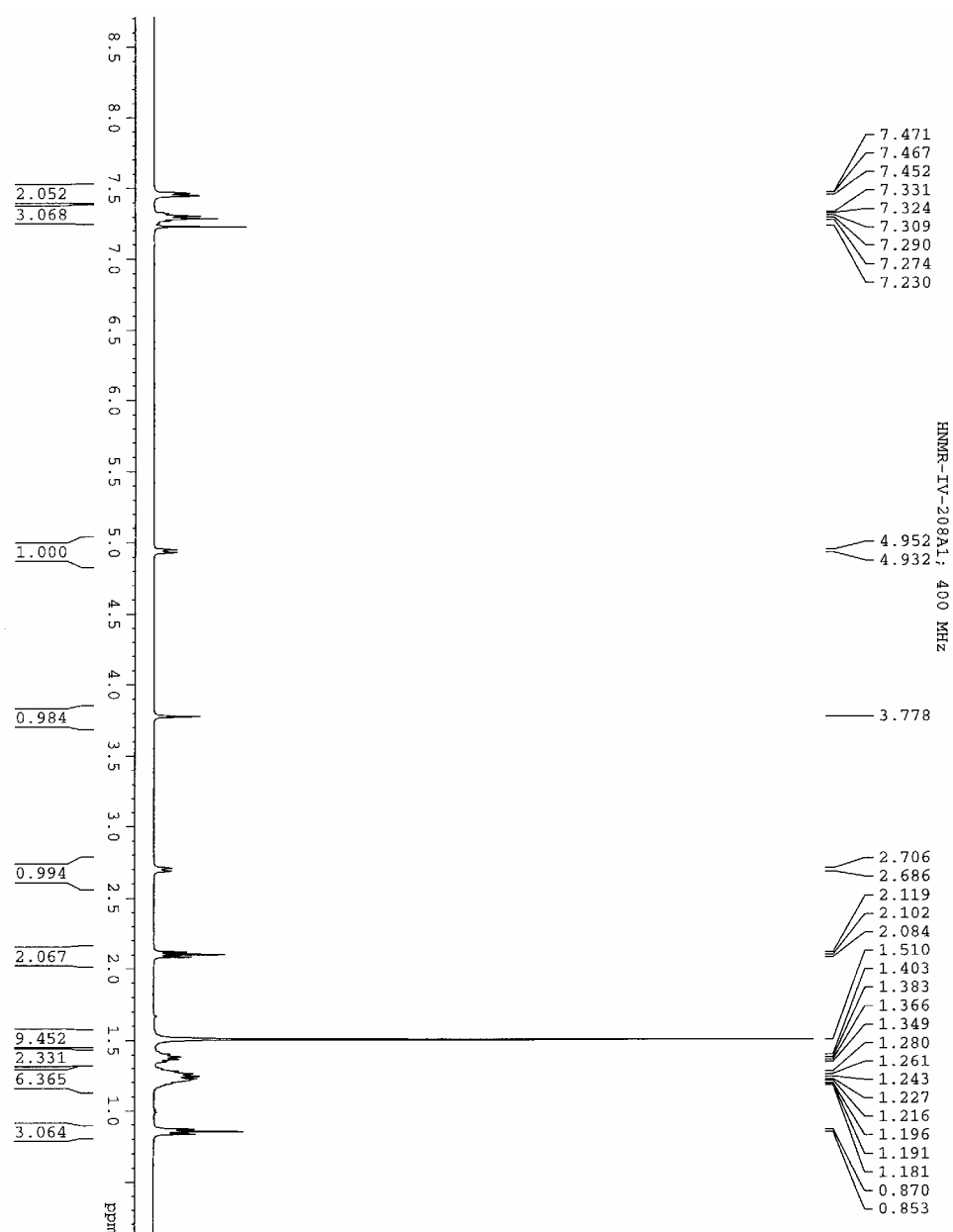


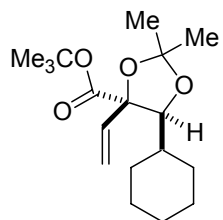




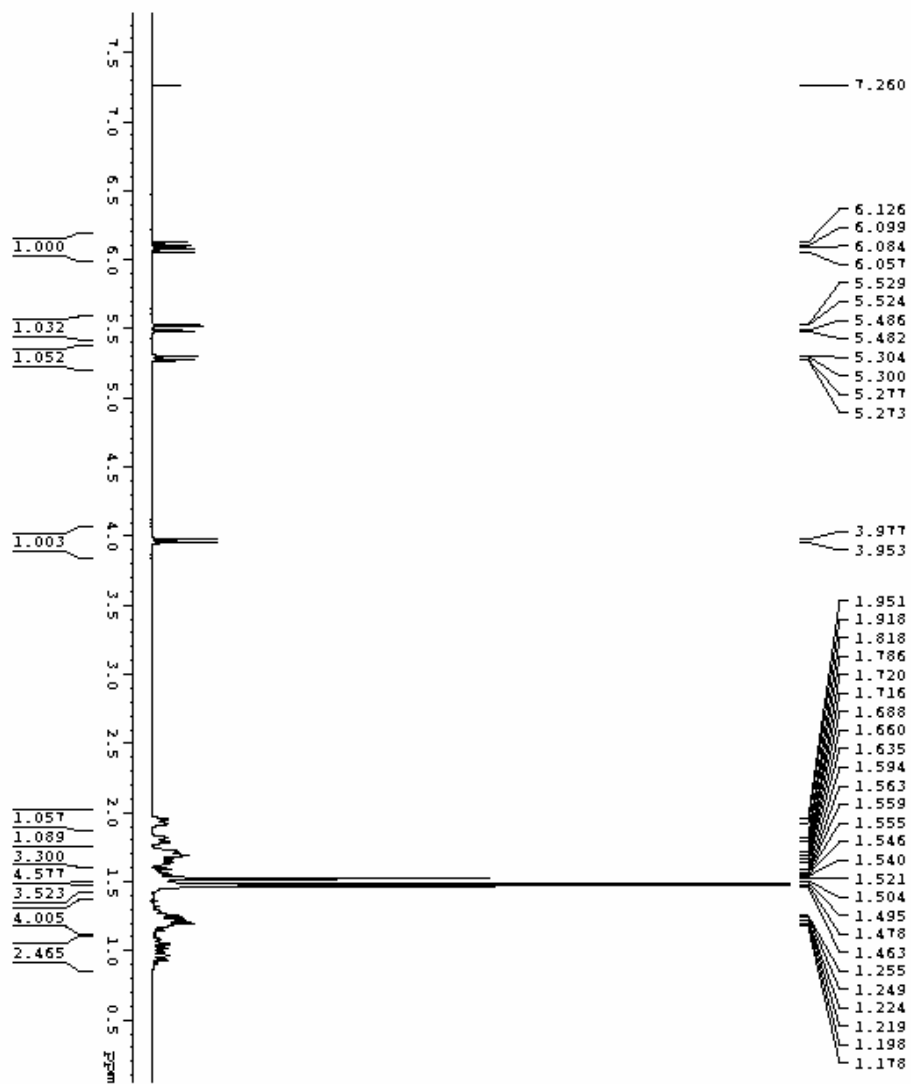


13





15



Current Data Parameters
 Name: 15
 Date_Time: 20080228
 File: 15_01.f2
 F2 - Acquisition Parameters
 Date_Time: 20080228 16:04:00
 File: 15_01.f2
 F2 - Processing parameters
 Date_Time: 20080228 16:04:00
 File: 15_01.f2
 F2 - Reference parameters
 Name: 15
 Date_Time: 20080228 16:04:00
 File: 15_01.f2
 F2 - Integration parameters
 Name: 15
 Date_Time: 20080228 16:04:00
 File: 15_01.f2
 F2 - Peak list
 Name: 15
 Date_Time: 20080228 16:04:00
 File: 15_01.f2
 F2 - Integration list
 Name: 15
 Date_Time: 20080228 16:04:00
 File: 15_01.f2

