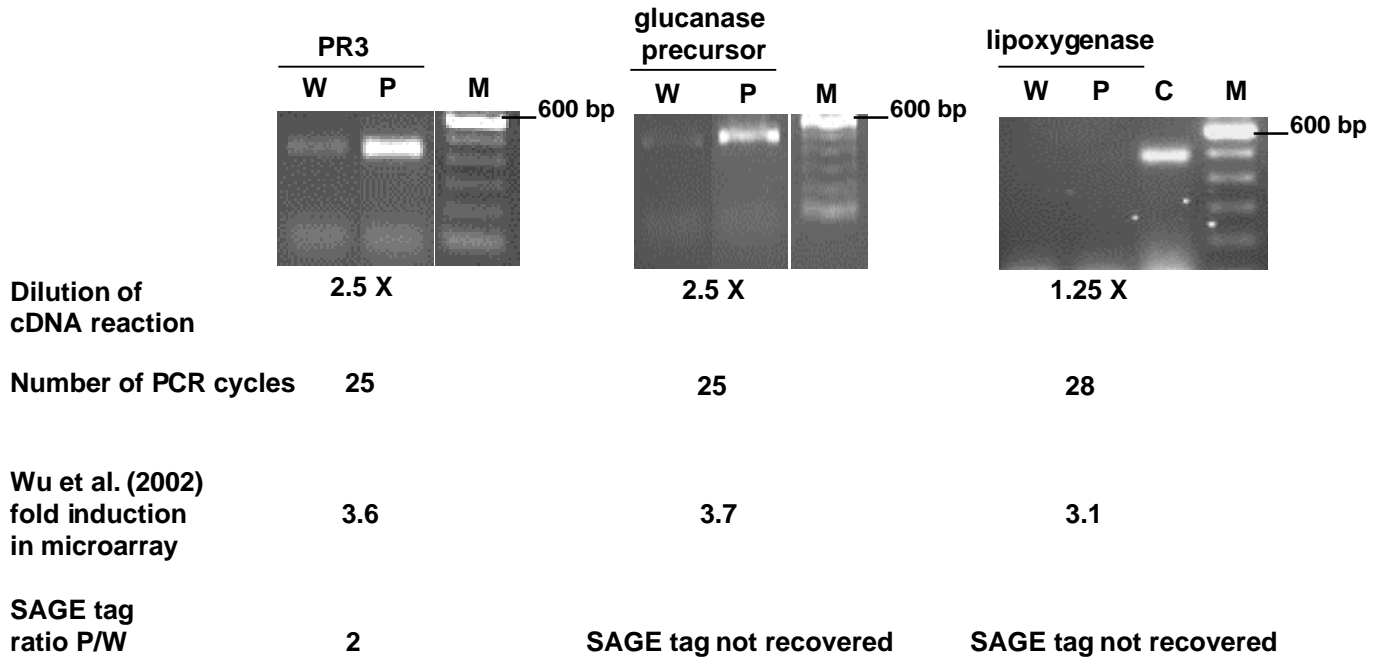


Supplementary Figure S2. Reverse transcription PCR (RT-PCR) of 3 genes from Wu et al. (2002) study.



The induction of 3 genes from the study of Wu et al. (2002) was tested in our Pti4-expressing plants. RT-PCR was performed as described in Methods. The genes tested are shown above each gel picture. PCR products obtained from wild type and Pti4-expressing *Arabidopsis* are indicated by **W** and **P** respectively. The 100 bp DNA ladder (**M**) is labeled for size comparison. **C** indicates the control PCR with genomic DNA for lipoxygenase. The dilution of cDNA used and the number of PCR cycles is shown at the bottom of each gel picture. The induction of the genes as observed by Wu et al., and the SAGE results for the genes is also shown. The sequences of the forward (F) and reverse (R) primers used were: **endochitinase** F caggtagatgggctacag, R ccacgtccacactccaatccac, **glucanase precursor** F acggcggatgatgtgtgct, R tctcttcggtgtcctdgttctc, **lipoxygenase** F gggcttgaggtttgatgctatt, R aacgcctccaacgcttcttct.