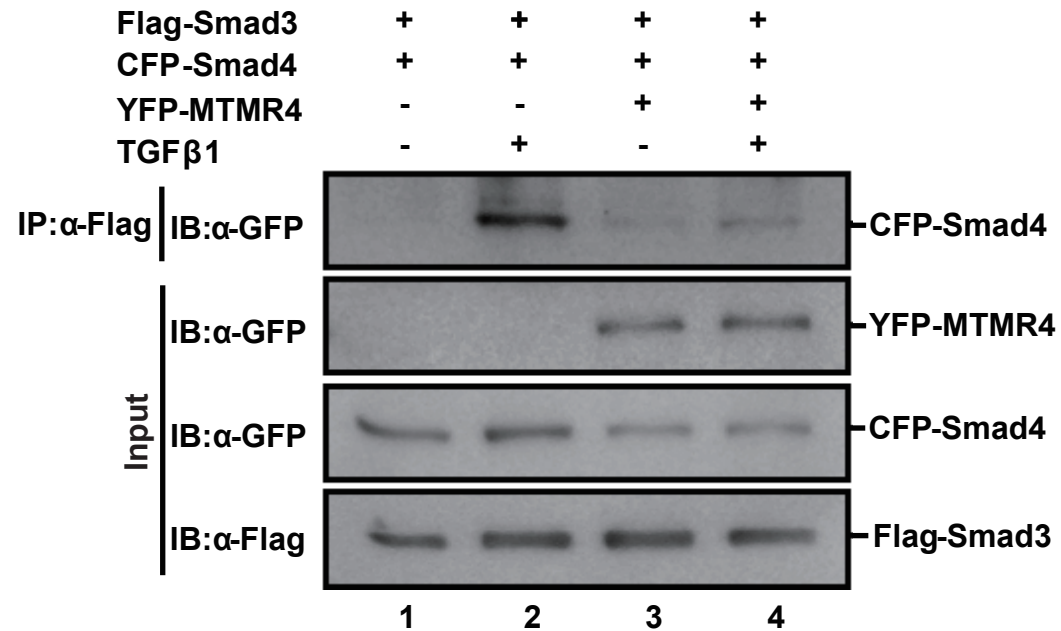


Supplemental figure 1



Supplemental figure 1. MTMR4 reduces Smad3-Smad4 complex formation. 293T cells cotransfected with pYFP-MTMR4 and pXFIF-Smad3 or pECFP-Smad4 (1 μ g each) were treated with or without TGF- β 1 for 2h. Cell lysates were immunoprecipitated with an anti-Flag antibody and interactions between Smad4 and Smad3 were detected by immunoblotting with an anti-GFP antibody (top panel). Protein expression levels of Smad3, Smad4 and MTMR4 were verified using the antibodies as indicated (input).

Supplemental Table 1

The oligonucleotide sequences of primers used to construct plasmids

Primers	DNA Sequences (5'-3')
MTMR4-Forward	CCGCTCGAGCGATGGGTGAGGAGGGGCCCCC
MTMR4-Reverse	CGGGGTACCTCAACTGGAAGCTGTAGCAA
MTMR4-ΔFYVE1-Forward	CCGCTCGAGCGATGGGTGAGGAGGGGCCCCC
MTMR4-ΔFYVE1-Reverse	CGGGGTACCTCAAGTCTCTTTCTTATCAACAG
MTMR4-ΔFYVE2-Forward	CCGCTCGAGCGATGGGTGAGGAGGGGCCCCC
MTMR4-ΔFYVE2-Reverse	CGGGGTACCTCACACTGGGGAAAGGTAAAGA
MTMR4-ΔDSP-Forward	CCGCTCGAGCGATGGGTGAGGAGGGGCCCCC
MTMR4-ΔDSP-Reverse	CGGGGTACCTCAACTCTCCAGTGCCGACAACC
FYVE1-Forward	CCGCTCGAGCGATGCATAGGTTACGGCAAATCGA
FYVE1-Reverse	CGGGGTACCTCAGACTTGAATGTGTTTCGTAAC
FYVE2-Forward	CCGCTCGAGCGATGGAGGTGACTCGCTGGGTTC
FYVE2-Reverse	CGGGGTACCTCAGACTTGAATGTGTTTCGTAAC
MTMR4-C407S-Forward	CCGGCCTGTGCTGGTACACTCTTCAGATGGCTG
MTMR4-C407S-Reverse	CAGCCATCTGAAGAGTGTACCAGCACAGGCCGG
Smad2-Forward	CCGCTCGAGCGATGTCGTCCATCTTGCCATT
Smad2-Reverse	CGGGGTACCTTATGACATGCTTGAGCAAC
Smad3-Forward	CCGCTCGAGCGATGTCGTCCATCCTGCCTTT
Smad3-Reverse	CGGGGTACCCTAAGACACACTGGAACAGC
Smad4-Forward	CCGCTCGAGCGATGGACAATATGTCTATTACG
Smad4-Reverse	CGGGGTACCTCAGTCTAAAGGTTGTGGGT