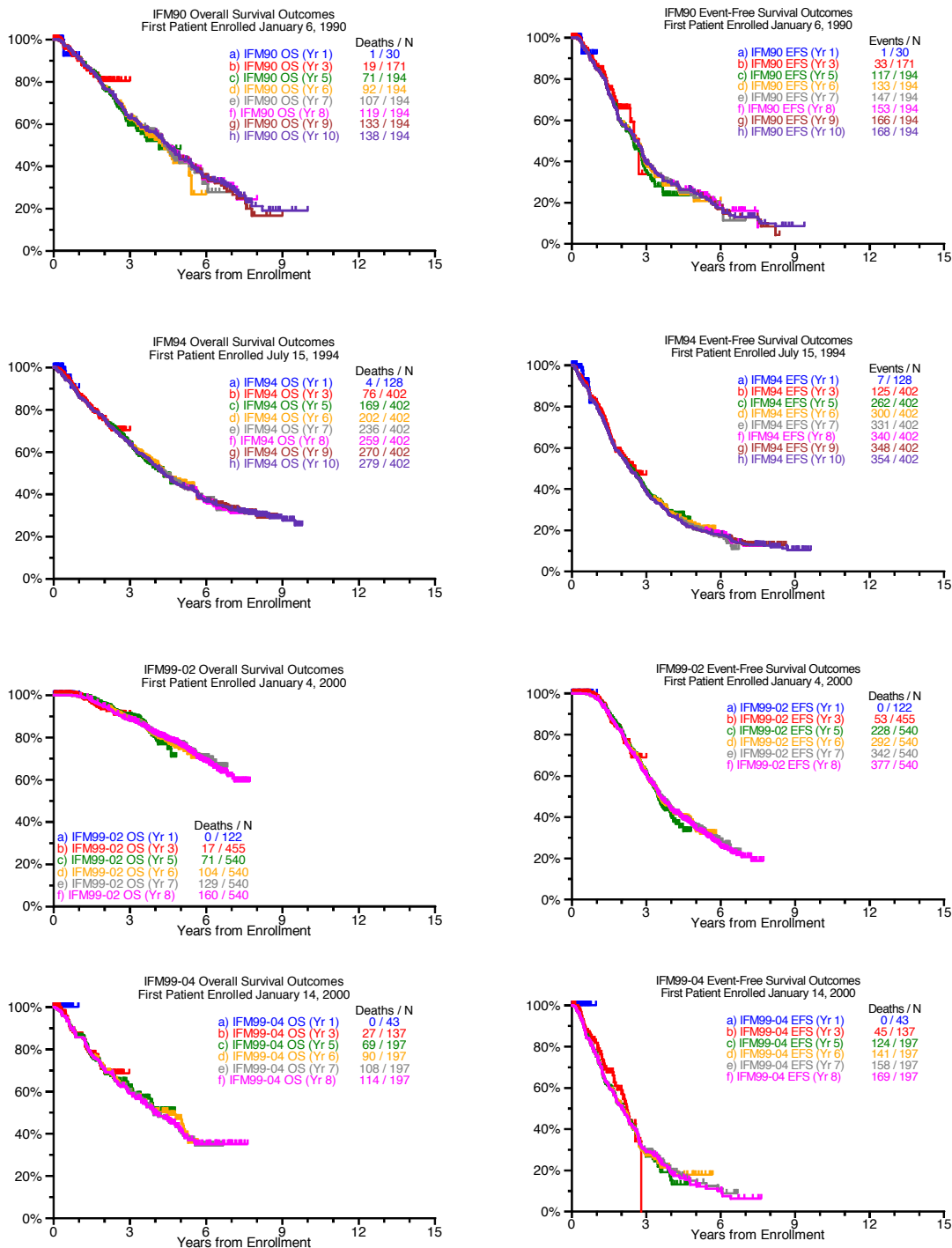


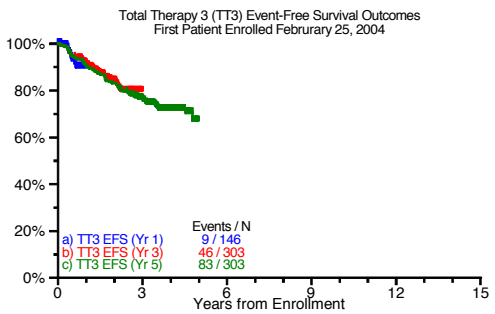
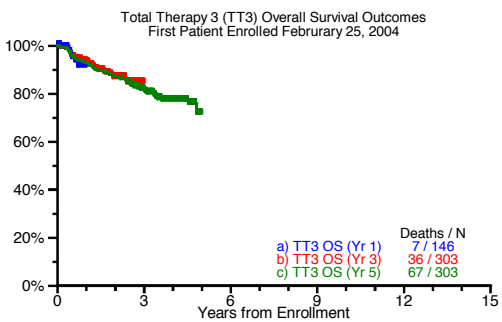
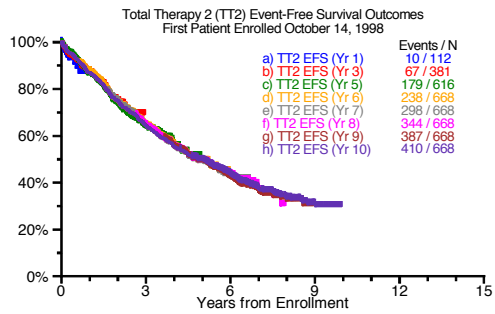
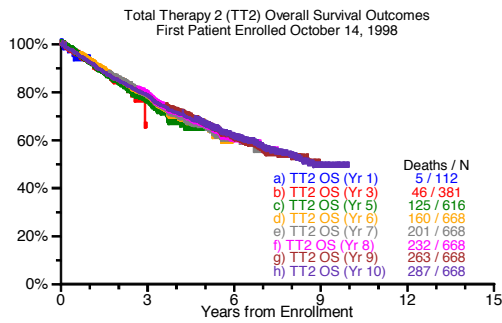
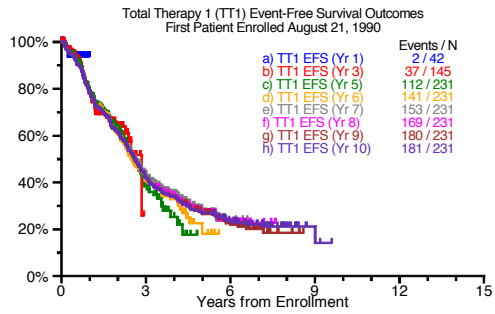
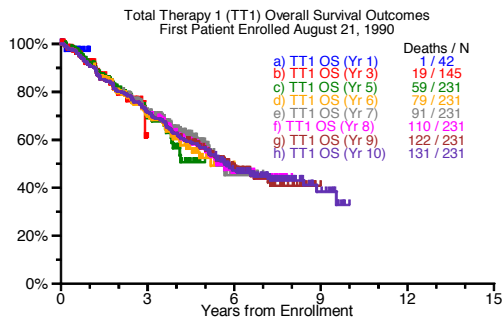
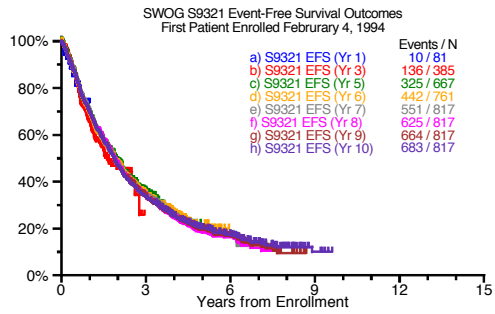
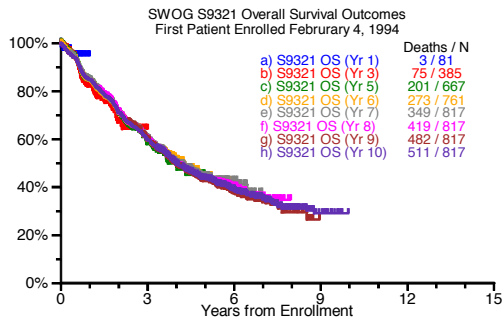
Long-Term Follow-Up of Autotransplant Trials for Multiple Myeloma: Update of Protocols Conducted by the Intergroupe Francophone Du Myelome, Southwest Oncology Group, and University of Arkansas For Medical Sciences

Barlogie et al

Data Supplement Figure 1:
Reiterative Kaplan-Meier analyses applying progressively longer follow-up times



Data Supplement Figure 1 (continued):
 Reiterative Kaplan-Meier analyses applying progressively longer follow-up times



Data Supplement Figure 2: Randomized clinical trial outcomes in terms of overall survival (left panels) and event-free survival (right panels)

Figure 2a: IFM90

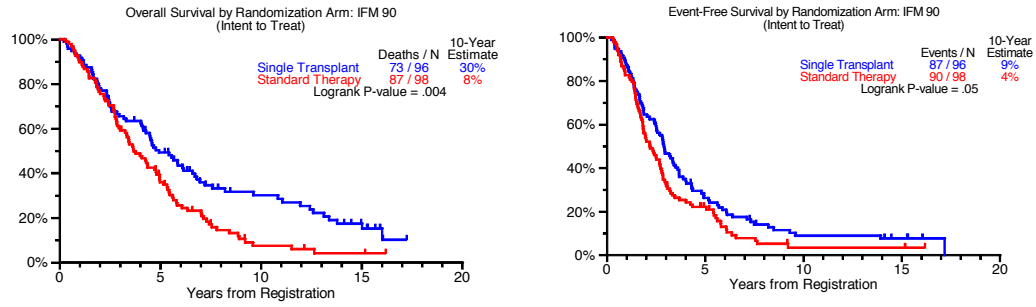


Figure 2b: IFM94

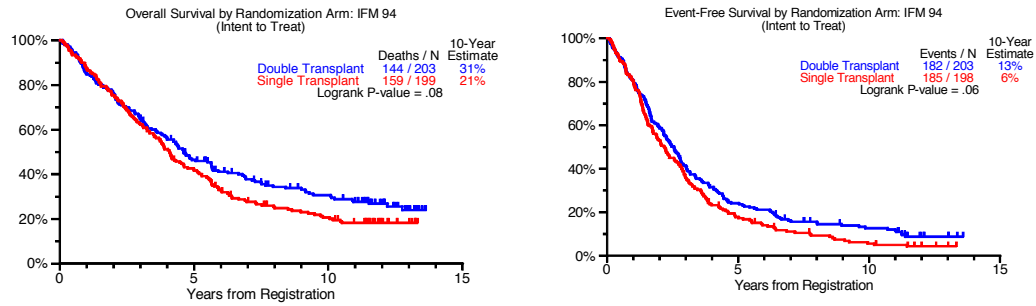


Figure 2c: S9321

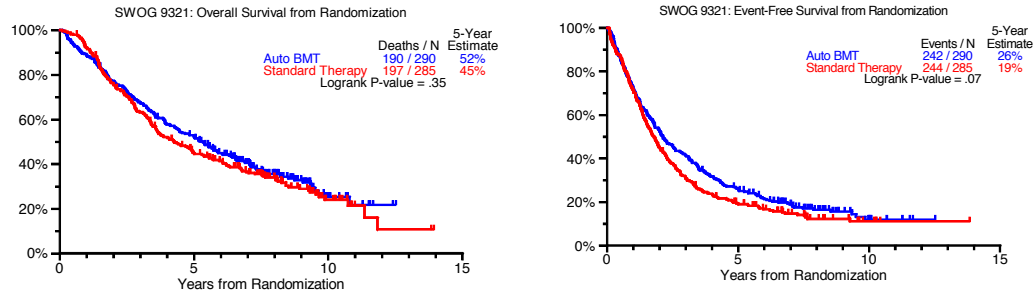


Figure 2d: TT2

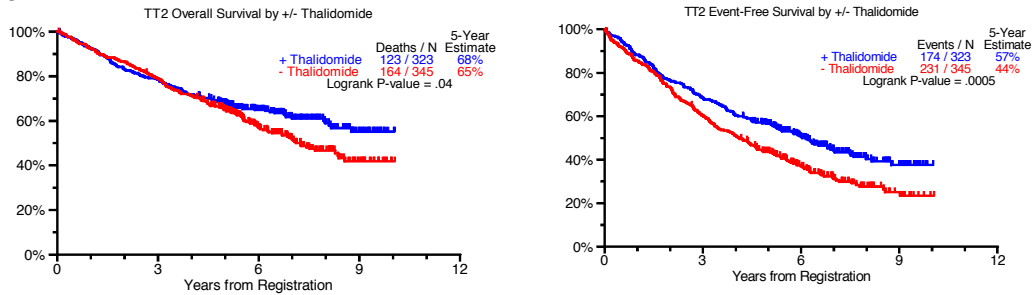
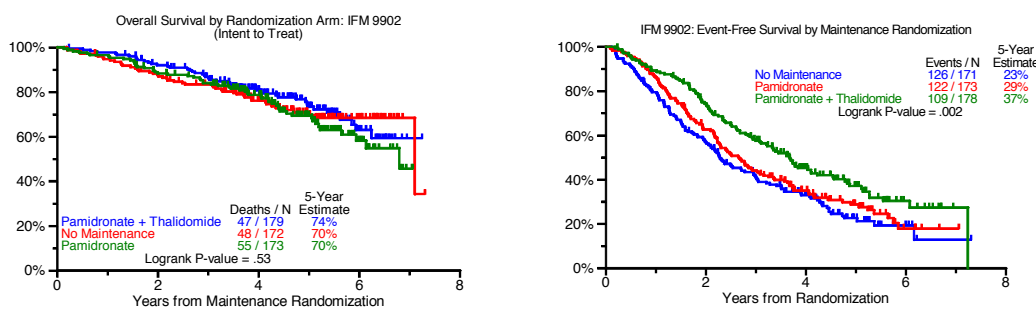


Figure 2e: IFM9902



Data Supplement Table 1: Univariate and multivariate analyses of baseline and treatment features associated with survival outcomes in context of trials grouped together as tandem transplant and tandem transplant plus thalidomide categories:

| | | | Overall Survival | |
|--|---|------------------------|-------------------------|-----------------|
| | Variable | n/N (%) | HR (95% CI) | P-value |
| Univariate | Tandem transplant | 2294/3508 (65%) | 0.56 (0.51,0.61) | <.001 |
| | Tandem transplant with thalidomide | 626/3508 (18%) | 0.56 (0.48,0.65) | <.001 |
| | Age ≥ 60 yr | 985/3508 (28%) | 1.34 (1.21,1.48) | <.001 |
| | Albumin < 3.5 g/dL | 893/3367 (27%) | 1.42 (1.29,1.57) | <.001 |
| | B2M ≥ 3.5 mg/L | 1504/3422 (44%) | 1.80 (1.64,1.97) | <.001 |
| | B2M > 5.5 mg/L | 745/3422 (22%) | 1.94 (1.76,2.15) | <.001 |
| | Hb < 10 g/dL | 1188/3422 (35%) | 1.59 (1.45,1.75) | <.001 |
| | LDH ≥ ULN | 955/3178 (30%) | 1.41 (1.27,1.56) | <.001 |
| Multivariate | <i>Tandem transplant</i> | <i>2033/3077 (66%)</i> | <i>0.61 (0.55,0.68)</i> | <i><.001</i> |
| | <i>Tandem transplant with thalidomide</i> | <i>623/3077 (20%)</i> | <i>0.69 (0.58,0.81)</i> | <i><.001</i> |
| | Age ≥ 60 yr | 862/3077 (28%) | 1.42 (1.27,1.58) | <.001 |
| | Albumin < 3.5 g/dL | 808/3077 (26%) | 1.15 (1.03,1.28) | 0.011 |
| | B2M ≥ 3.5 mg/L | 1320/3077 (43%) | 1.44 (1.30,1.60) | <.001 |
| | Hb < 10 g/dL | 1060/3077 (34%) | 1.19 (1.07,1.32) | 0.002 |
| | LDH ≥ ULN | 924/3077 (30%) | 1.37 (1.24,1.52) | <.001 |
| <p>HR- Hazard Ratio, 95% CI- 95% Confidence Interval, P-value from Wald Chi-Square Test in Cox Regression NS2- Multivariate results not statistically significant at 0.05 level. All univariate p-values reported regardless of significance. Multivariate model uses stepwise selection with entry level 0.1 and variable remains if meets the 0.05 level. A multivariate p-value greater than 0.05 indicates variable forced into model with significant variables chosen using stepwise selection. Variables considered for multivariate model were: Tandem transplant, Tandem transplant with thalidomide, Age ≥ 60 yr, Albumin < 3.5 g/dL, B2M ≥ 3.5 mg/L, Hb < 10 g/dL, LDH ≥ ULN. Tandem transplant includes patients enrolled on TT1, TT2, TT3, IFM 99-02, and IFM 99-04, and those randomized to receive a tandem transplant on IFM 94. Tandem transplant with thalidomide includes patients enrolled on TT3 and the thalidomide arm of TT2.</p> | | | | |