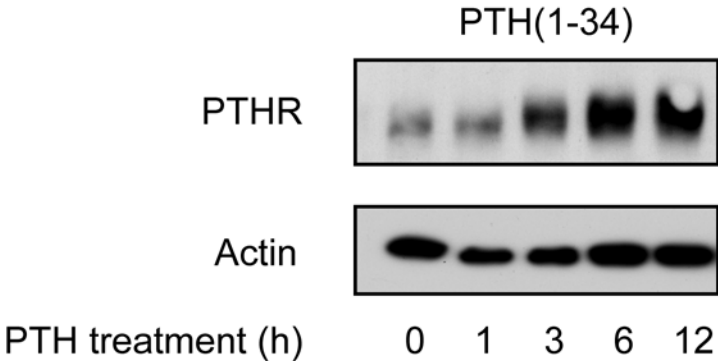


Supplemental Figure 1



CHO cells stably expressing HA-PTHR were incubated with 200 μ M cycloheximide for 2 h and then cells were treated with 100 nM PTH(1-34) for the indicated times in the presence of cycloheximide. Subsequently, cells were lysed and proteins were separated by SDS-PAGE and blotted to PVDF membranes. PTHR was detected in Western blots with an anti-HA antibody.