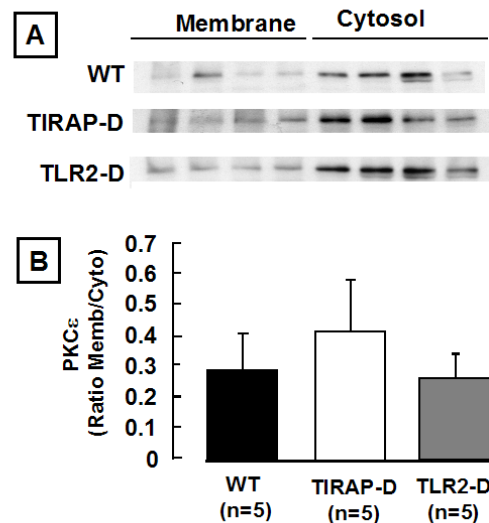


**Data Supplement for "Innate Immunity Mediates Myocardial Preconditioning Through Toll-like Receptor 2 and TIRAP Dependent Signaling Pathways."**



**Figure S-1:** Ratio of membrane to cytosolic to protein kinase C-epsilon (PKCε) at baseline in wild-type (WT), TIRAP deficient (TIRAP-D) and TLR2 deficient (TLR2-D) mice under basal conditions. To determine the degree of PKCε translocation in naive hearts, WT, TIRAP-D and TLR-2 hearts were buffer perfused in a Langendorff apparatus (see manuscript for details), the membrane and cytosolic extracts isolated and Western blot analysis was performed using an anti-protein kinase C-epsilon (PKCε) antibody (see manuscript for details). As shown, the ratio of membrane/cytosolic PKCε was ~ 0.3, 0.4 and 0.3, respectively, in WT, TIRAP-D and TLR2-D mice. There was no significant difference ( $p > 0.05$ ) in the ratio of membrane/cytosolic PKCε between WT, TIRAP-D and TLR2-D mice at baseline.