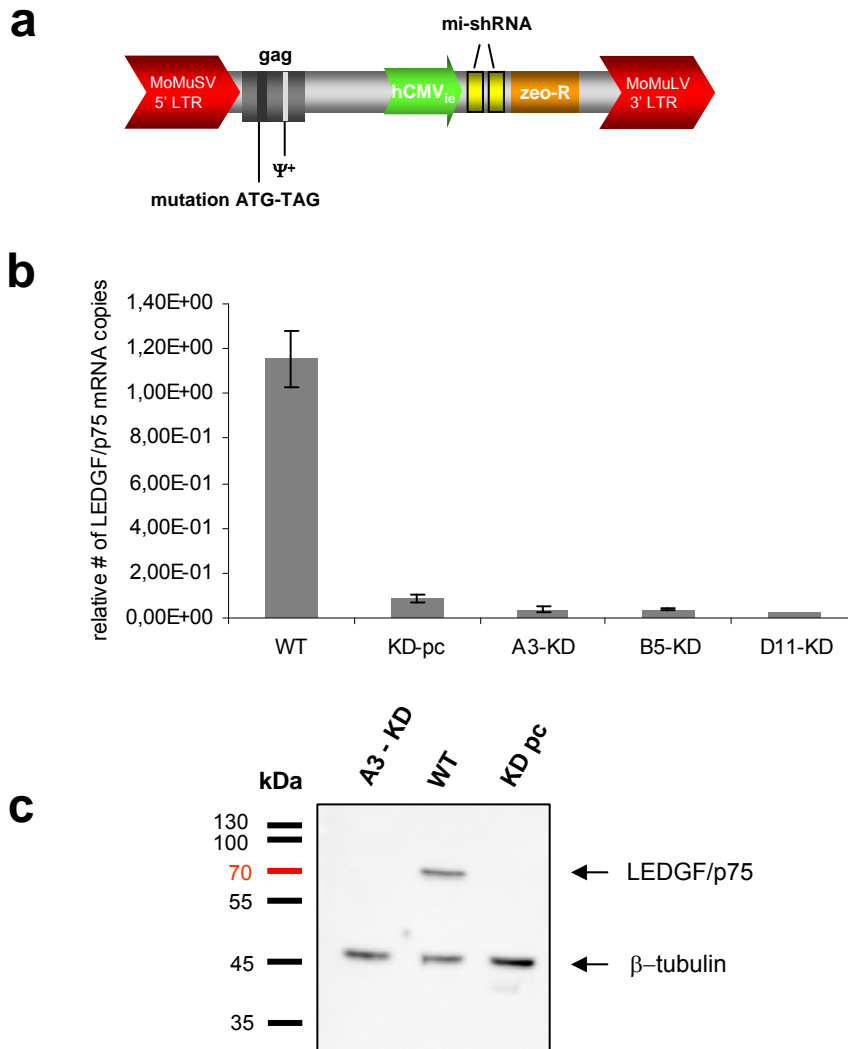
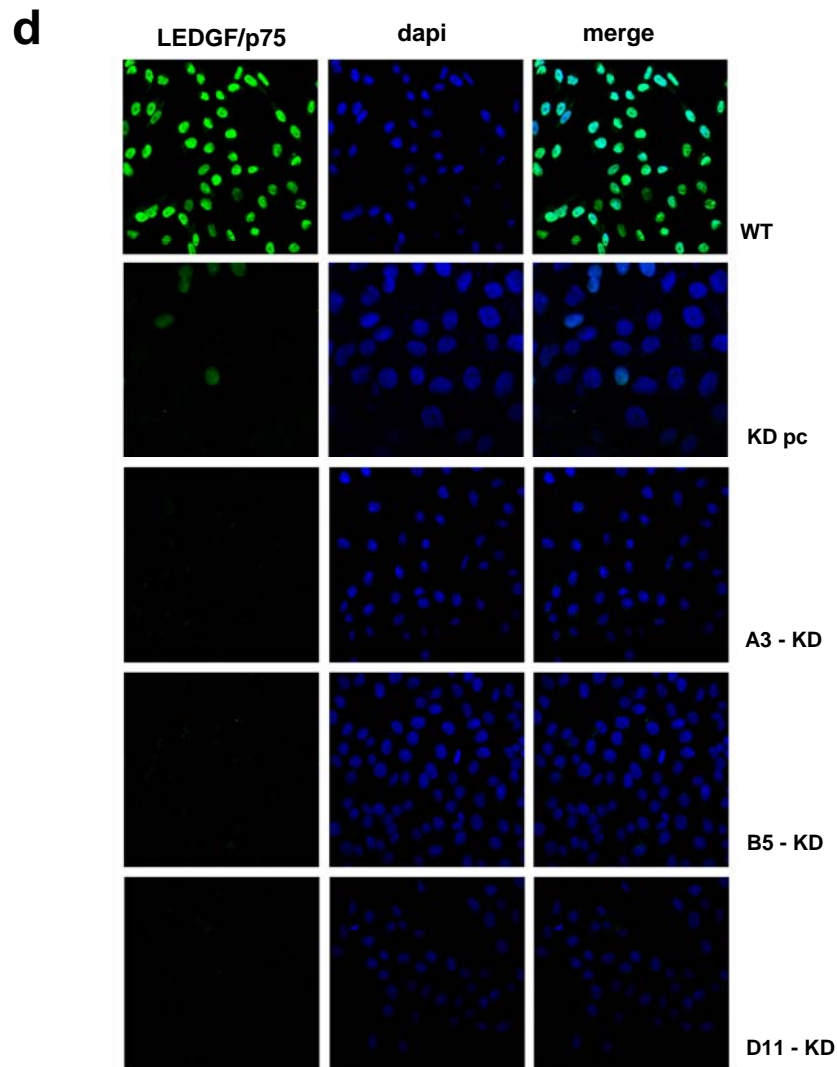


Figure S1



**Figure S1. Generation of LEDGF/p75 depleted HeLaP4 cell lines.** (a), schematic representation of the MoMuLV-based vector to suppress LEDGF/p75. Two identical miRNA-hairpin sequences are encoded downstream of the human  $CMV_{ie}$  promoter, followed by a zeocin selection marker (zeo-R),  $\psi^+$  indicates the packaging signal; (b), LEDGF/p75 knock-down measured by Q RT-PCR. LEDGF mRNA levels are normalised for  $\beta$ -actin. The data are represented as mean  $\pm$  stdev of at least three measurements; (c), Protein expression levels of monoclonal and polyclonal LEDGF/p75 KD cells (A3-KD and KD pc, respectively) compared with wild-type cells (WT). Loading was controlled by  $\beta$ -tubulin.

Figure S1



**Figure S1. Generation of LEDGF/p75 depleted HeLaP4 cell lines (continued).** (d), LSM of LEDGF/p75 KD cell lines. Endogenous LEDGF/p75 was detected using a LEDGF<sub>325-530</sub> specific antibody in WT , KD-pc and three monoclonal lines (A3, B5 and D11). Chromatin was stained with DAPI.