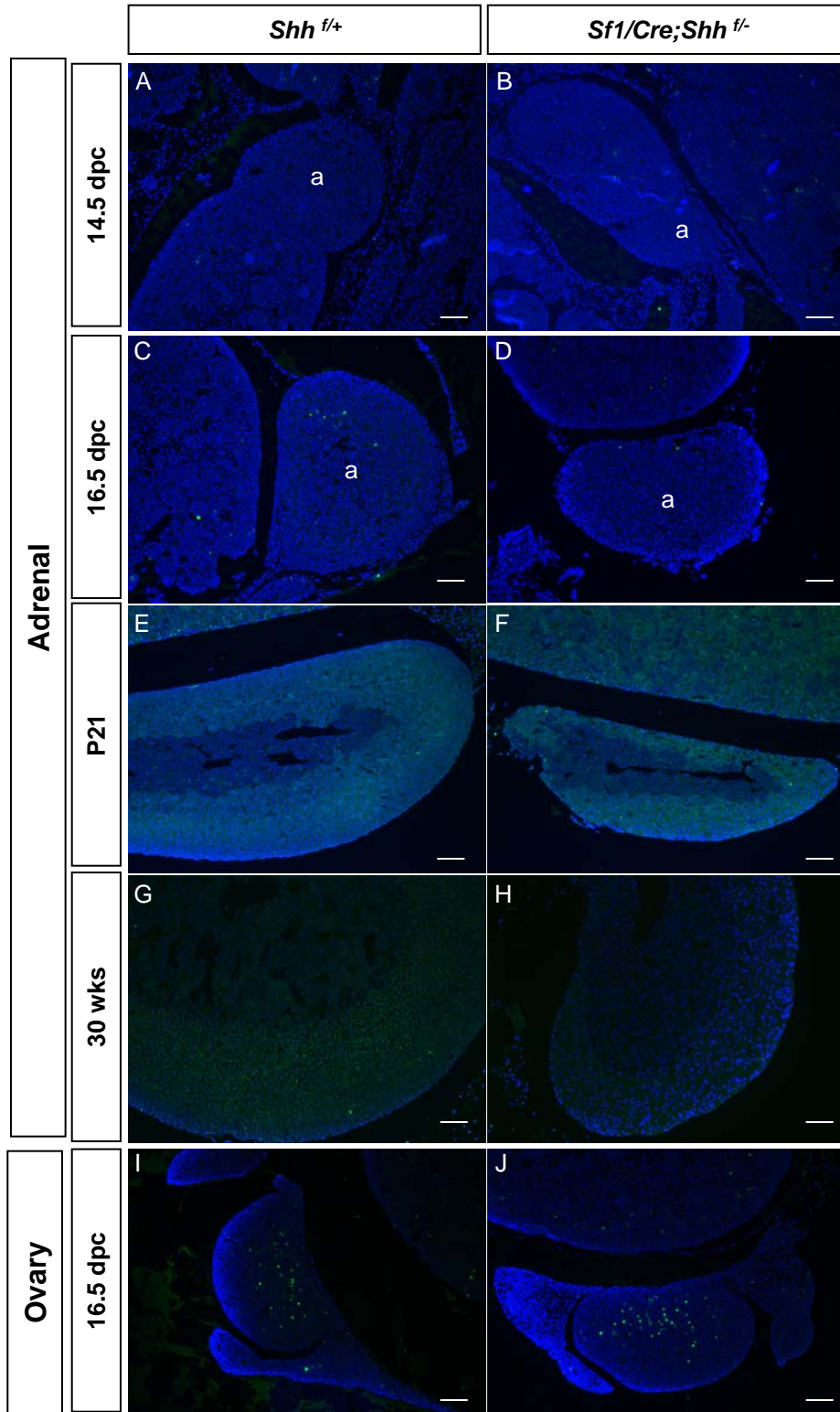


Supplemental Fig. 1: TUNEL assays on control and *Shh* conditional knockout adrenal sections at 14.5 (A & B), 16.5 (C & D), P21 (E & F), and 30 weeks (G & H). 16.5 dpc fetal ovaries as TUNEL-positive tissues (I & J). TUNEL-positive cells were labeled green with blue nuclear DAPI counterstain. 16.5 dpc ovaries were used as a positive control. a = adrenal. *Scale bars*, 100 μ m.

Supplemental Fig. 2: Immunohistochemical analyses of Ki-67 (A-F) and SF1 (G-L) on control and *Shh* conditional knockout adrenal sections at 14.5 dpc, 16.5 dpc, and P5. Brownish/red nuclear staining represented positive staining. *Scale bars*, 50 μ m.

Supplemental Fig. 3: Whole-mount light field microscopic images of the adrenal and kidney from control and *Shh* conditional knockout animals at 1-year old. Arrow = adrenal. R = right. L = left. *Scale bars*, 1 mm.

Huang et al Supplemental Fig. 1



Huang et al Supplemental Fig. 2

