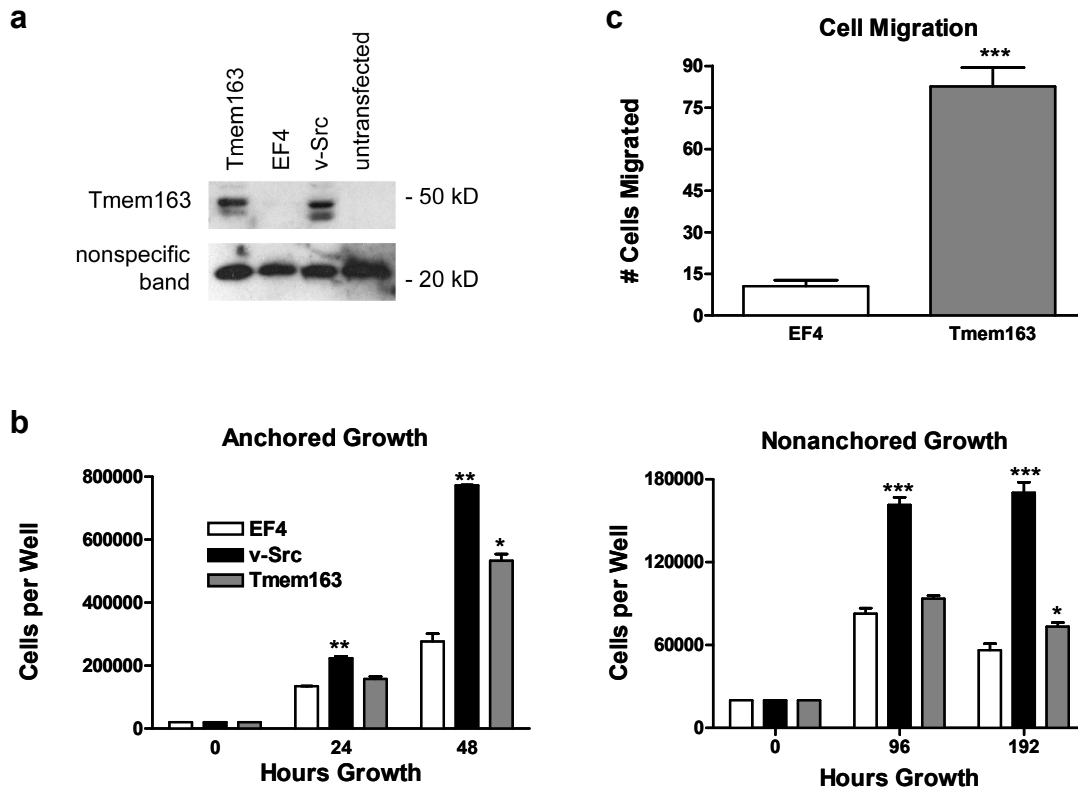
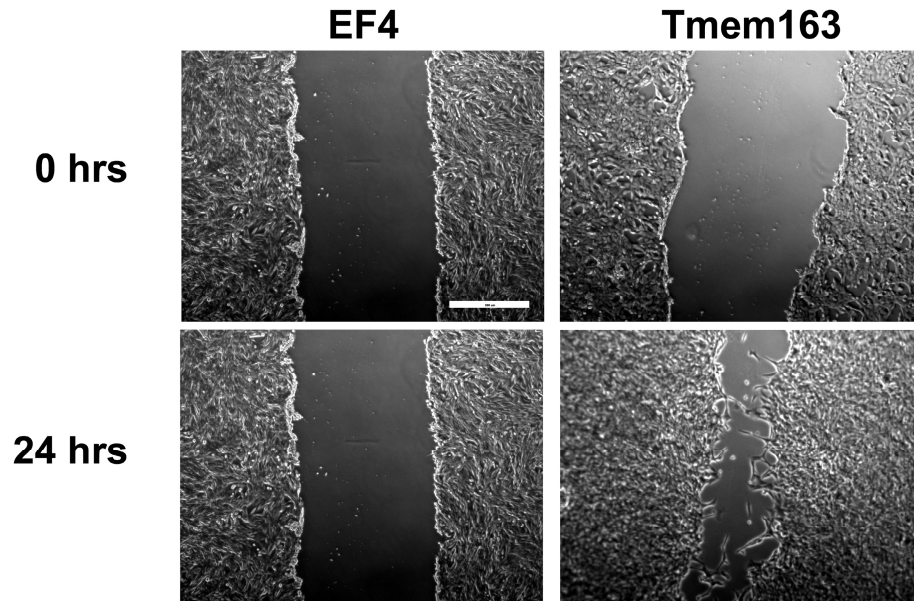


Supplemental Figure 1: Pdpn expression promotes cell migration. Src transformed Cx43Ko or wild type cells were transfected with control siRNA or siRNA directed against Pdpn. Cell migration was analyzed by wound healing and quantitated as the number of cells to enter a 1.8 mm² area in the middle of the wound in 24 hours (bar = 500 microns).



Supplemental Figure 2: Tmem163 expression promotes cell migration.

(a) Tmem163 expression was examined by Western blot analysis of protein (10 μ g/lane) from Cx43Ko cells transfected with Tmem163, v-Src, and the empty parental vector (EF4), as well as untransfected cells. Bands representing Pdpn and a nonspecific band to verify equal loading and transfer are shown as indicated. (b) Cells (20,000 per well) were cultured in anchored or nonanchored conditions and counted at the time points indicated. Data are shown as the number of cells per well (mean+SEM, with n=2 for anchored growth and n=4 for nonanchored growth). (c) Cell migration was analyzed by wound healing and quantitated as the number of cells to enter a 1.8 mm² area in the middle of the wound in 24 hours (mean+SEM, n=4). Single and triple asterisks denote p<0.05 and p<0.0001 compared to control transfectants by t-test, respectively.



Supplemental Figure 3: Tmem163 expression promotes cell migration. Nontransformed Cx43Ko cells were transfected with Tmem163 or the empty parental expression vector (EF4). Cell migration was analyzed by wound healing and quantitated as the number of cells to enter a 1.8 mm² area in the middle of the wound in 24 hours (bar = 500 microns).