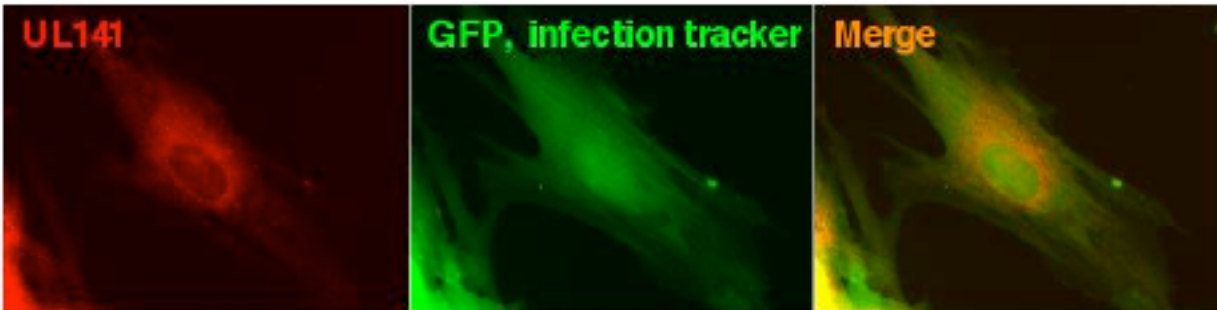


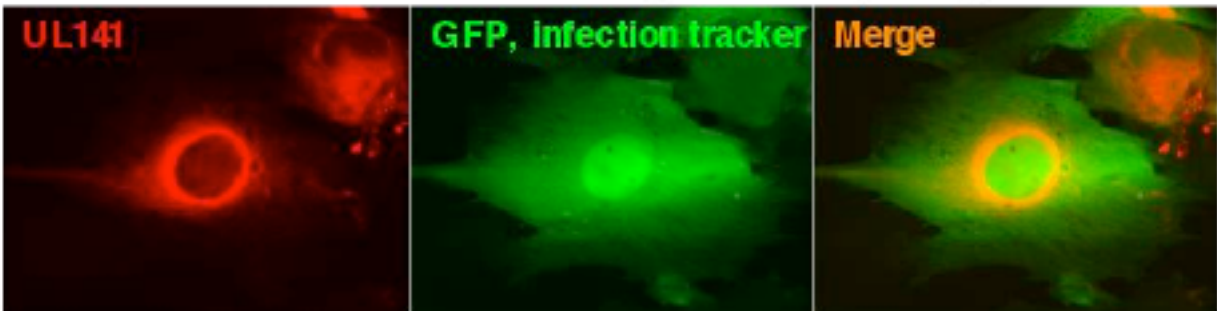
### Supplementary Figure 5

**Analysis of intracellular localisation of gpUL141** HFFF were infected with an adenovirus vector encoding both full length UL141 and GFP (RAd-UL141/GFP) or with HCMV strain Toledo. In immunofluorescence experiments gpUL141 was observed to co-localise with the ER-associated proteins calnexin and concavalin A, but exhibit a different pattern of distribution to GFP (autofluorescence).

RAd-UL141/GFP infected fibroblasts, 'low' UL141 expressing cell



RAd-UL141/GFP infected fibroblasts, 'high' UL141 expressing cell



HCMV infected fibroblasts, UL141 is co-localised with ER markers

