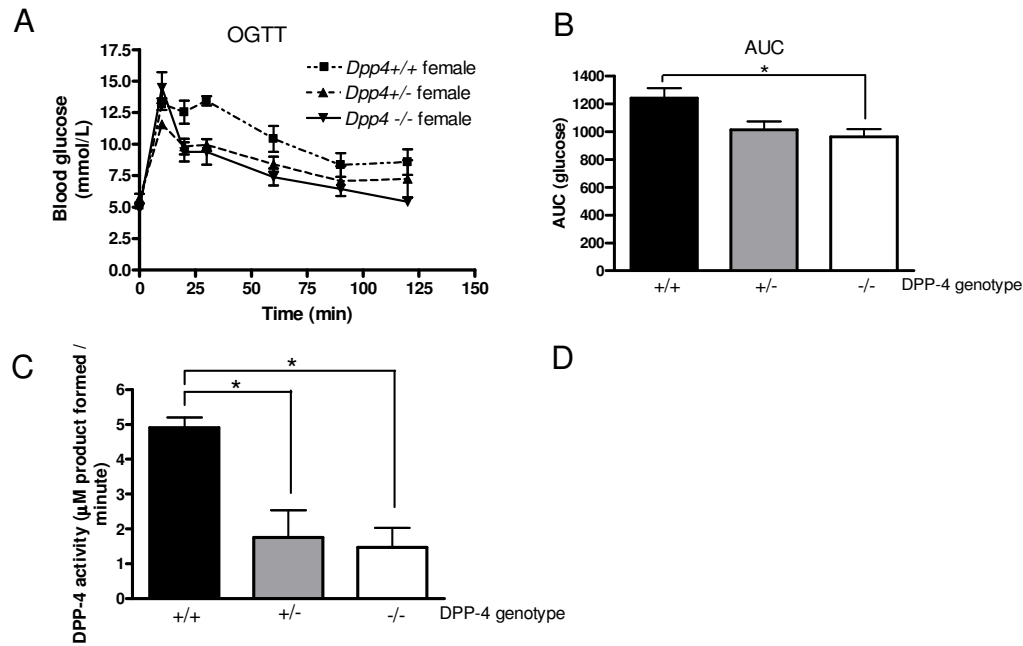


Supplementary Figure 1



Supplementary Figure 1. Genetic disruption of the *Dpp4* gene is associated with decreased plasma DPP-4 activity and significantly improved oral glucose tolerance. Oral glucose tolerance (A&B), was significantly improved in *Dpp4*^{-/-} mice compared with (A&B). Plasma DPP-4 activity is significantly lower in both *Dpp4*^{+/-} and *Dpp4*^{-/-} mice compared to *Dpp4*^{+/+} mice (C). *p<0.05 vs *Dpp4*^{+/+}, n=5 for each genotype for A-C.