

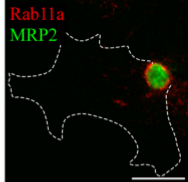
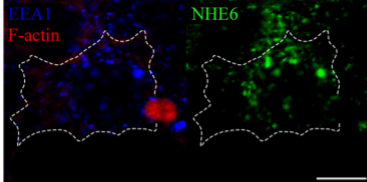
**Supplemental figure 1. Distribution of EEA1- and Rab11a-positive endosomal compartments in NHE6.1 knockdown cells.**

To investigate the distribution of NHE6.1-positive endosomes in knockdown cells, untreated control cells (*Control, upper panels*) and cells treated with siNo.1 (*siRNA, lower panels*) were fixed and stained for NHE6, EEA1, and F-actin (*green, blue, and red, respectively in left panels*) or Rab11a and MRP2 (*red and green, respectively in right panels*). The shape of cells was confirmed by DIC images and indicated with *broken lines*. Bar 10  $\mu\text{m}$ .

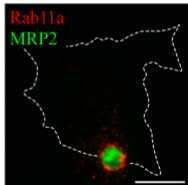
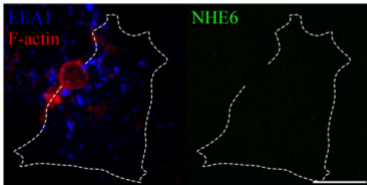
**Supplemental figure 2. Expression of NHE6.1-mCherry in stable HepG2 cell lines.**

Three stable clones of NHE6.1-mCherry were established and isolated as described in “Materials and Methods”. The expression level of NHE6.1-mCherry in clones (*lane 2 to 4, clone 1 to 3*) was characterized in comparison with endogenous NHE6.1 in HepG2 (*lane1, parental HepG2*) by immunoblotting. Different amounts of protein was separated by SDS-PAGE as indicated at the top of the panel (10, 2, and 0.5  $\mu\text{g}$  protein/lane), and probed by anti-NHE6 antibody.

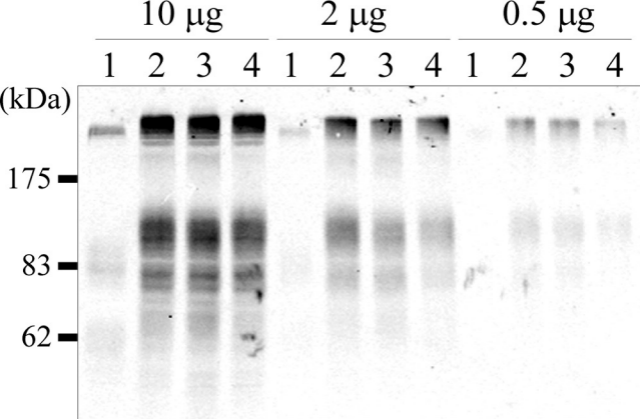
Control



siRNA



Supplementary Figure 1



- 1: Parental HepG2  
2: NHE6.1-mCherry clone1  
3: NHE6.1-mCherry clone2  
4: NHE6.1-mCherry clone3

IB: anti-NHE6

Supplementary Figure 2