

	1	2	3	4
rLOX-PP	+	+	+	+
PNGase F		+	+	
O-glycosidases			+	+

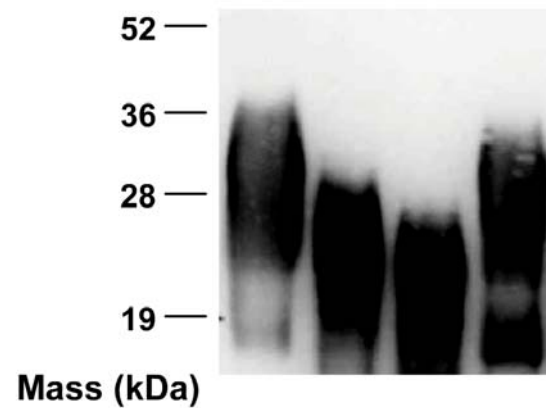


Figure S1. Recombinant LOX-PP contains both O- and N- linked sugars (Western blot). Deglycosylated rLOX-PP samples separated on a 12% SDS PAGE gel (as described in Figure 2) were analyzed by Western blotting using anti-LOX-PP antibody. Lane 1: rLOX-PP, lane 2: rLOX-PP + PNGase F, lane 3: rLOX-PP + PNGase F + O-glycosidases (Neuraminidase and O-glycosidase), lane 4 rLOX-PP + O-glycosidases only (Neuraminidase and O-glycosidase). Molecular weight markers are indicated in kDa.