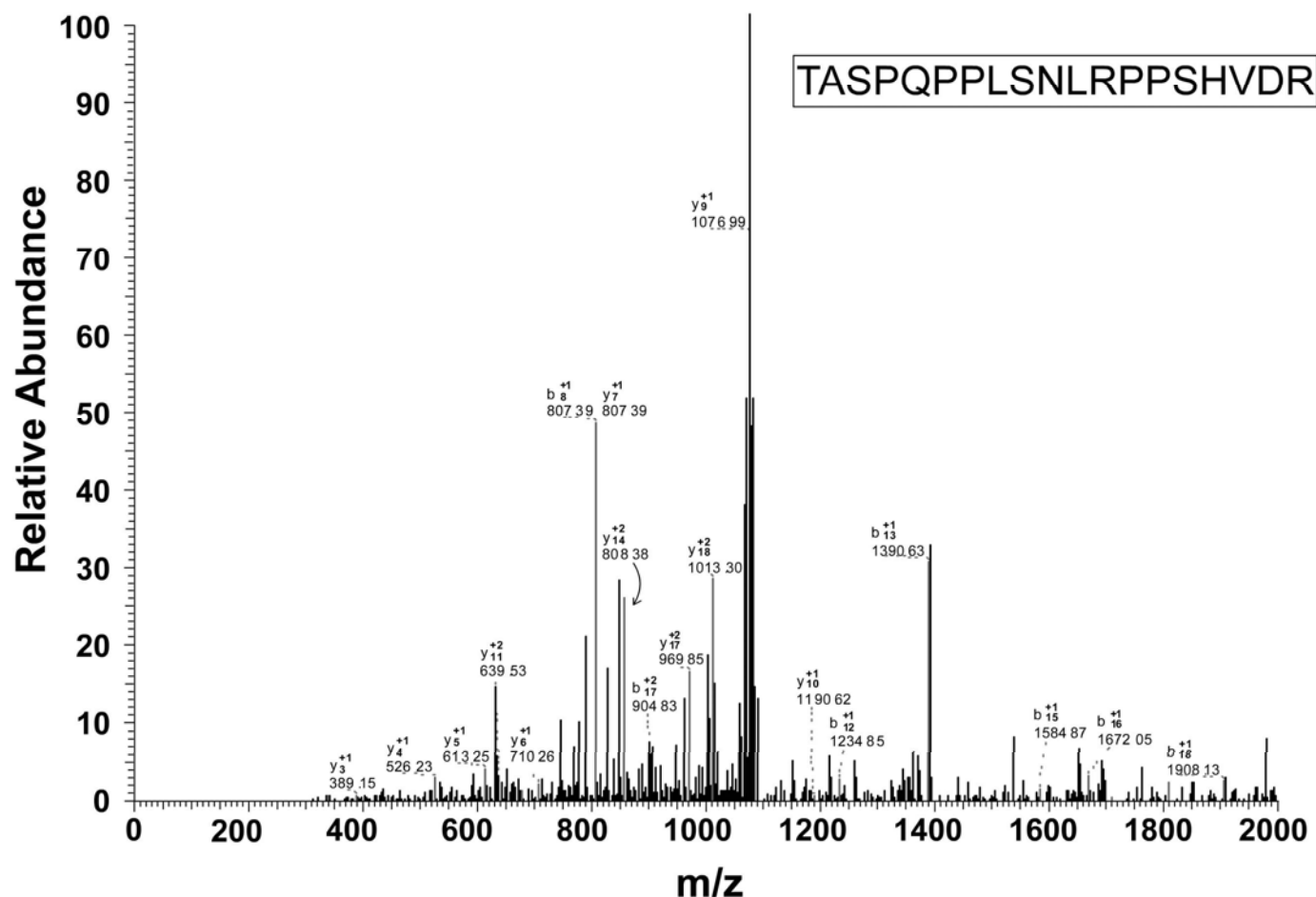


## Ms3 of peptide backbone 733.3 3+



**Figure S2. Identification of the rLOX-PP peptide containing O-linked glycosylation by MS.** Sequential CID of unique ion m/z 1049, z = 3+ found in the tryptic digest of rLOX-PP, results in shifts in peak that correspond to the loss of specific sugar moieties (Figure 4) and residual peaks at m/z = 733.33, z = 3+, 1099, z = 2+. This final MS3 identifies the rLOX-PP peptide TASPQPPLSNLRPPSHVDR.