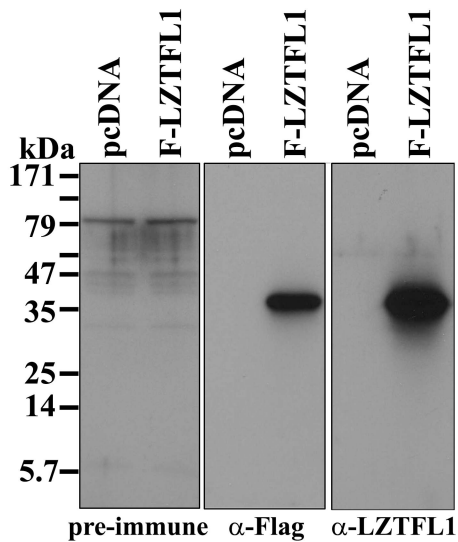
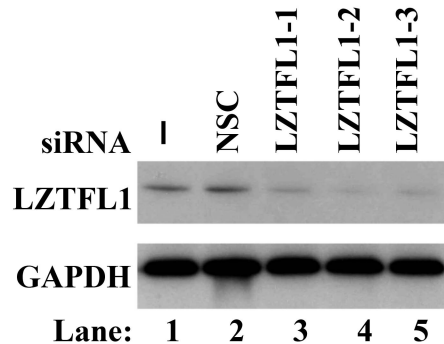
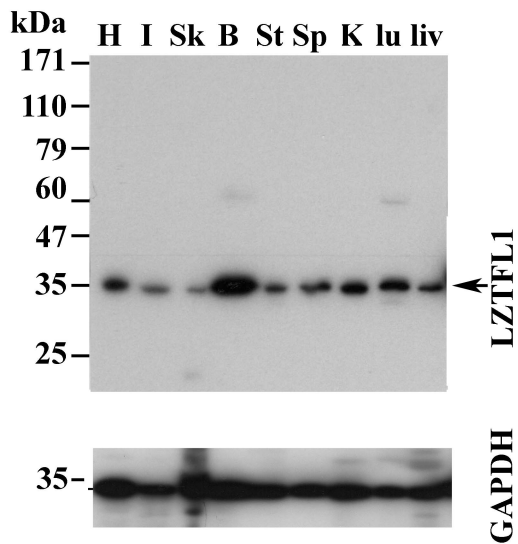


Supplemental Figure 1. Characterization of LZTFL1 specific antibody. (A) MCF-7 cells were transfected with control vector pcDNA and Flag-tagged pcDNA-LZTFL1. Cell lysates were subjected to Western analysis with rabbit pre-immune serum (left panel), antibody against Flag (middle panel), and LZTFL1 (right panel). (B) Lysates from C2C12 cells transfected without (lane 1), with non-specific control (NSC) siRNA (lane 2), and LZTFL1 specific siRNAs (lanes 3-5) were subjected to Western blot analysis using LZTFL1 antibody. GAPDH was used as loading control. (C) Mouse tissue distribution of LZTFL1. LZTFL1 is expressed in the heart (H), intestine (I), skeletal muscle (Sk), brain (B), stomach (St), spleen (Sp), kidney (K), lung (lu), and liver (liv). (D) IHC staining of LZTFL1 in a human gastric tumor sample. An intense dark brown precipitate of LZTFL1 staining is observed in normal epithelial cells (box a, 40x) whereas only diffuse, low levels of LZTFL1 staining are observed in the carcinoma (box b, 40x) that is located within the same histological section of the normal epithelial structure of the same individual. Normal rabbit IgG was used as the negative control (data not shown).

A

supplemental figure 1

B**C****D**