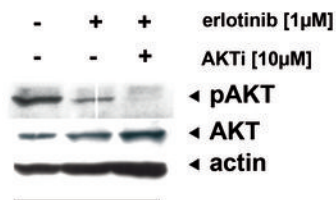


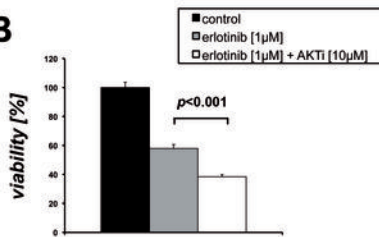
Supplementary Figure 1

A



H1650

B



H1650

Supplemental Table 1: Cell line overview						
Sample Name	Provider	ATCC/DSMZ- Number	Histology	EGFR mutation	Met amplification	IC ₅₀ erlotinib [μM]
A549	ATCC	CCL-185	Carcinoma, not specified	0	0	10
Calu1	ATCC	HTB-54	Epidermoid carcinoma	0	0	10
Calu3	ATCC	HTB-55	Adenocarcinoma	0	0	0.7
Calu6	ATCC	HTB-56	Anaplastic carcinoma	0	0	9.65
H1299	ATCC	CRL-5803	Carcinoma, not specified	0	0	10
H1355	ATCC	CRL-5865	Adenocarcinoma	0	0	3.31
H1395	ATCC	CRL-5868	Adenocarcinoma	0	0	5.05
H1437	ATCC	CRL-5872	Adenocarcinoma	0	0	10
H157			Squamous cell carcinoma	0	0	10
H1648	ATCC	CRL-5882	Adenocarcinoma	0	1	7.77
H1650	ATCC	CRL-5883	Adenocarcinoma, Bronchoalveolar ca.	1	0	2.13
H1666	ATCC	CRL-5885	Adenocarcinoma, Bronchoalveolar ca.	0	0	3.31
H1770	ATCC	CRL-5893	Neuroendocrine carcinoma	0	0	10
H1792	ATCC	CRL-5895	Adenocarcinoma	0	0	10
H1819	ATCC	CRL-5897	Adenocarcinoma	0	0	3.92
H1975	ATCC	CRL-5908	Adenocarcinoma	1	0	10
H1993	ATCC	CRL-5909	Adenocarcinoma	0	1	8.06
H2009	ATCC	CRL-5911	Adenocarcinoma	0	0	10
H2052	ATCC	CRL-5915	Mesothelioma	0	0	8.98
H2087	ATCC	CRL-5922	Adenocarcinoma	0	0	10
H2122	ATCC	CRL-5985	Adenocarcinoma	0	0	10
H2126	ATCC	CCL-256	Adenocarcinoma	0	0	10
H23	ATCC	CRL-5800	Adenocarcinoma	0	0	10
H2347	ATCC	CRL-5942	Adenocarcinoma	0	0	10
H28	ATCC	CRL-5820	Mesothelioma	0	0	10
H2882			Squamous cell carcinoma	0	0	10
H2887			Adenocarcinoma	0	0	10
H3122			Adenocarcinoma	0	0	10
H322			Adenocarcinoma	0	0	2.21
H3255			Adenocarcinoma	1	0	0.02
H358	ATCC	CRL-5807	Bronchioalveolar carcinoma	0	0	1.11
H441	ATCC	HTB-174	Papillary Adenocarcinoma	0	0	3.61
H460	ATCC	HTB-177	Large cell lung cancer	0	0	10
H661	ATCC	HTB-183	Large cell lung cancer	0	0	10
H820	ATCC	HTB-181	Papillary Adenocarcinoma	1	0	10
HCC1171			Adenocarcinoma	0	0	10
HCC1195			Adenosquamous carcinoma	0	0	10
HCC1359			Spindle-giant cell	0	0	10
HCC15	DSMZ	ACC 496	Squamous cell carcinoma	0	0	10
HCC1833			Adenocarcinoma	0	0	10
HCC193			Adenocarcinoma	0	0	10
HCC2279			Adenosquamous carcinoma	1	0	0.01
HCC2429				0	0	10
HCC2450			Adenocarcinoma	0	0	10
HCC2935	ATCC	CRL-2869	Adenocarcinoma	1	0	0.07
HCC366	DSMZ	ACC 492	Adenosquamous carcinoma	0	0	0.99
HCC4006	ATCC	CRL-2871	Adenocarcinoma	1	0	0.04
HCC44	DSMZ	ACC 534	Adenocarcinoma	0	0	10
HCC461			Adenocarcinoma	0	0	9.04
HCC515				0	0	1.85
HCC78	DSMZ	ACC 563	Adenocarcinoma	0	0	10
HCC827	ATCC	CRL-2868	Adenocarcinoma	1	0	0.02
HCC95			Squamous cell carcinoma	0	0	10

"0" absence of mutation; "1" presence of mutation