

FIGURE S1A

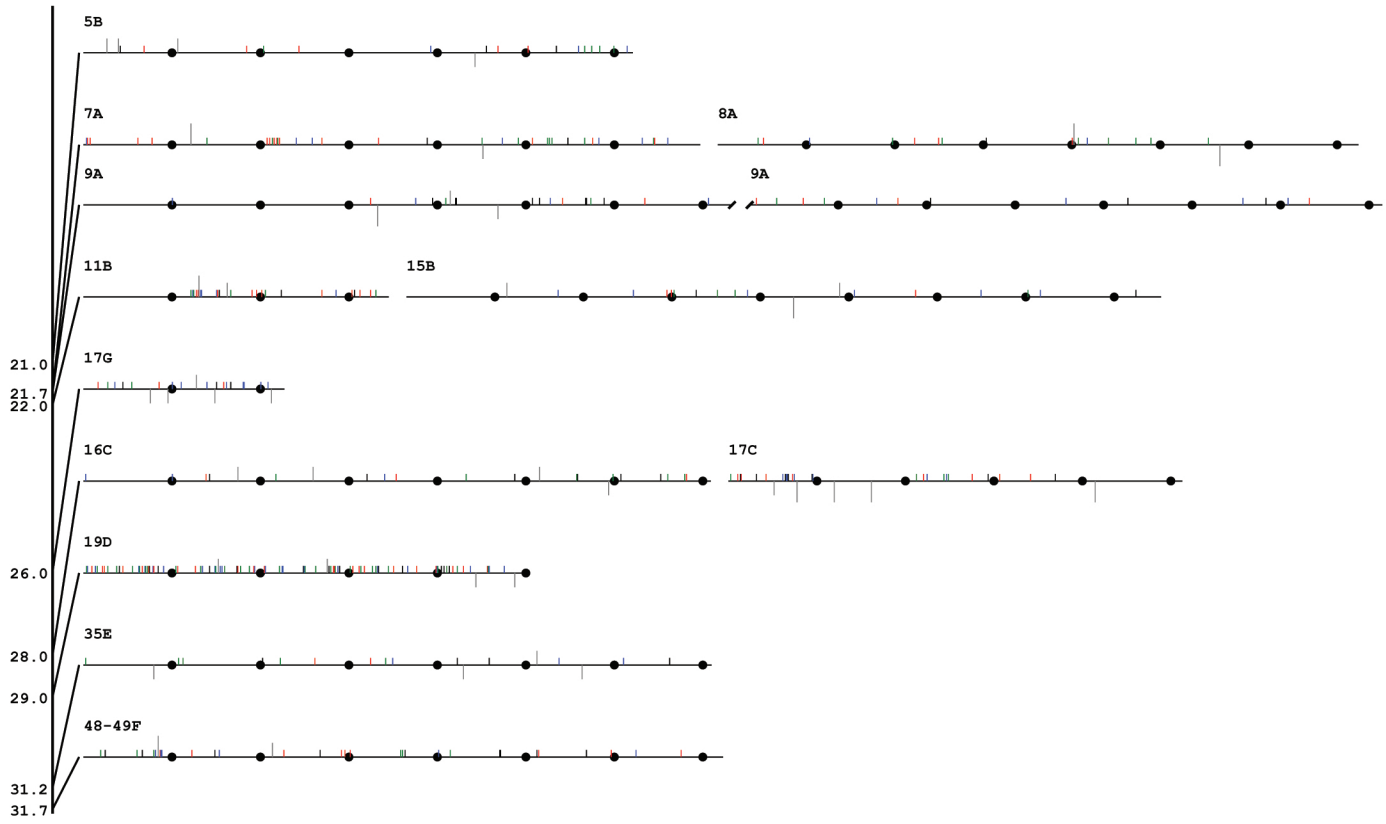


FIGURE S1B

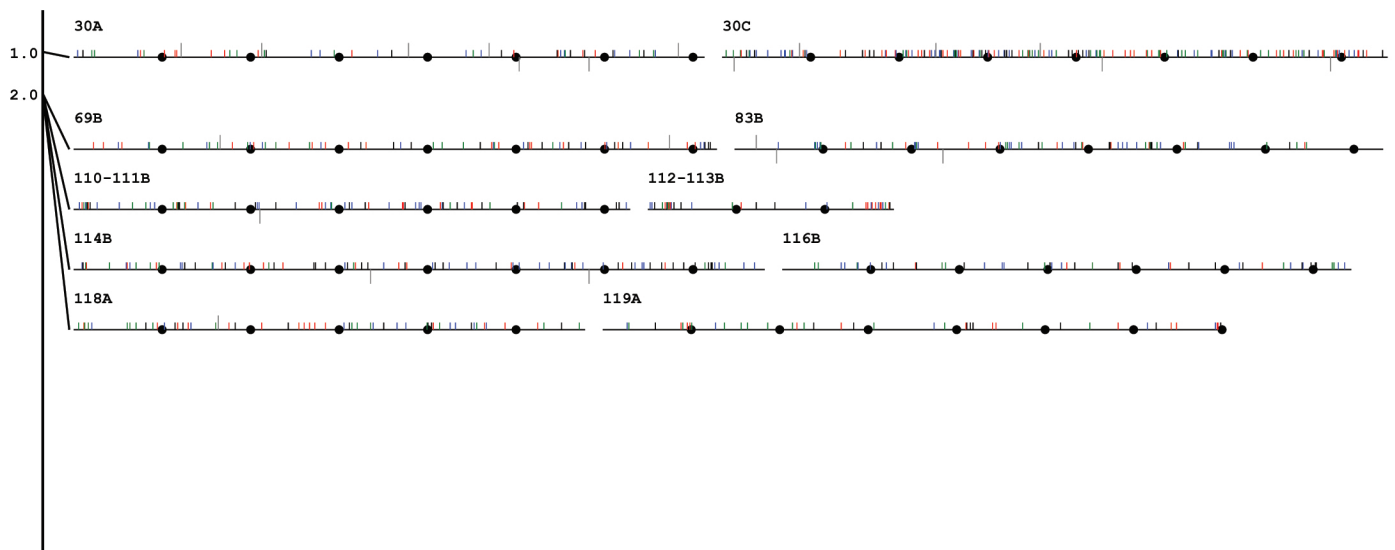


FIGURE S1C

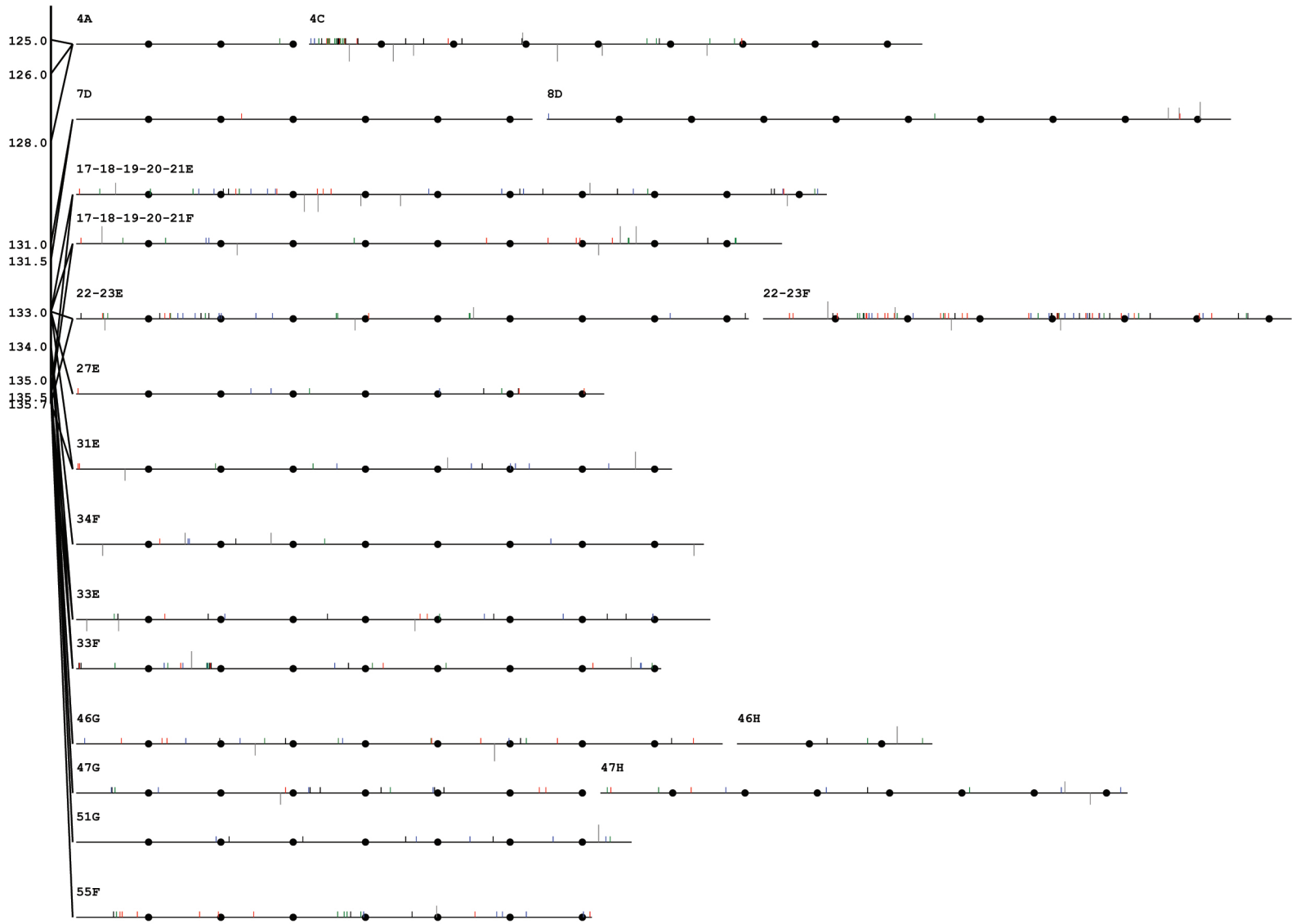


FIGURE S1D

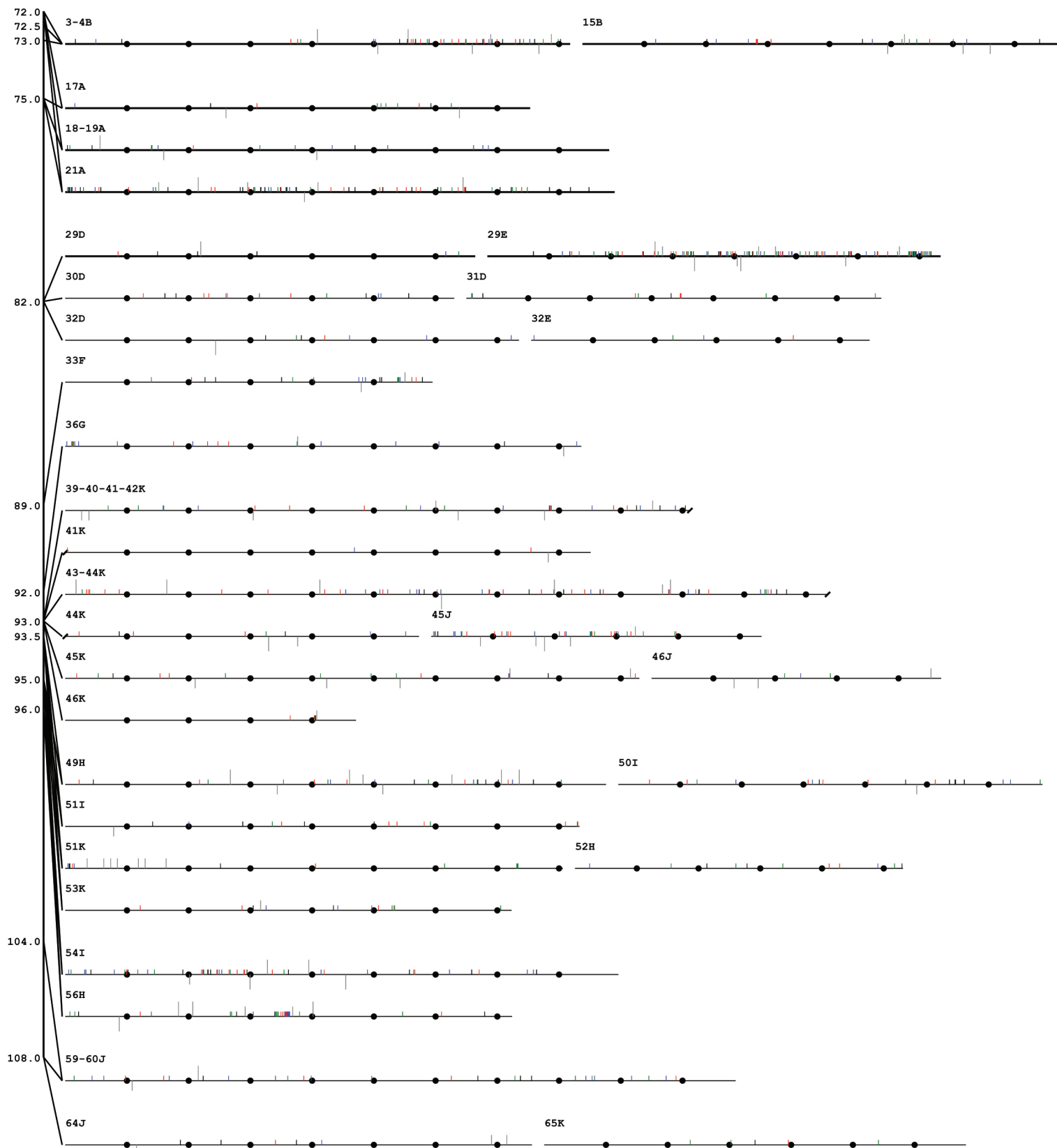


FIGURE S1E

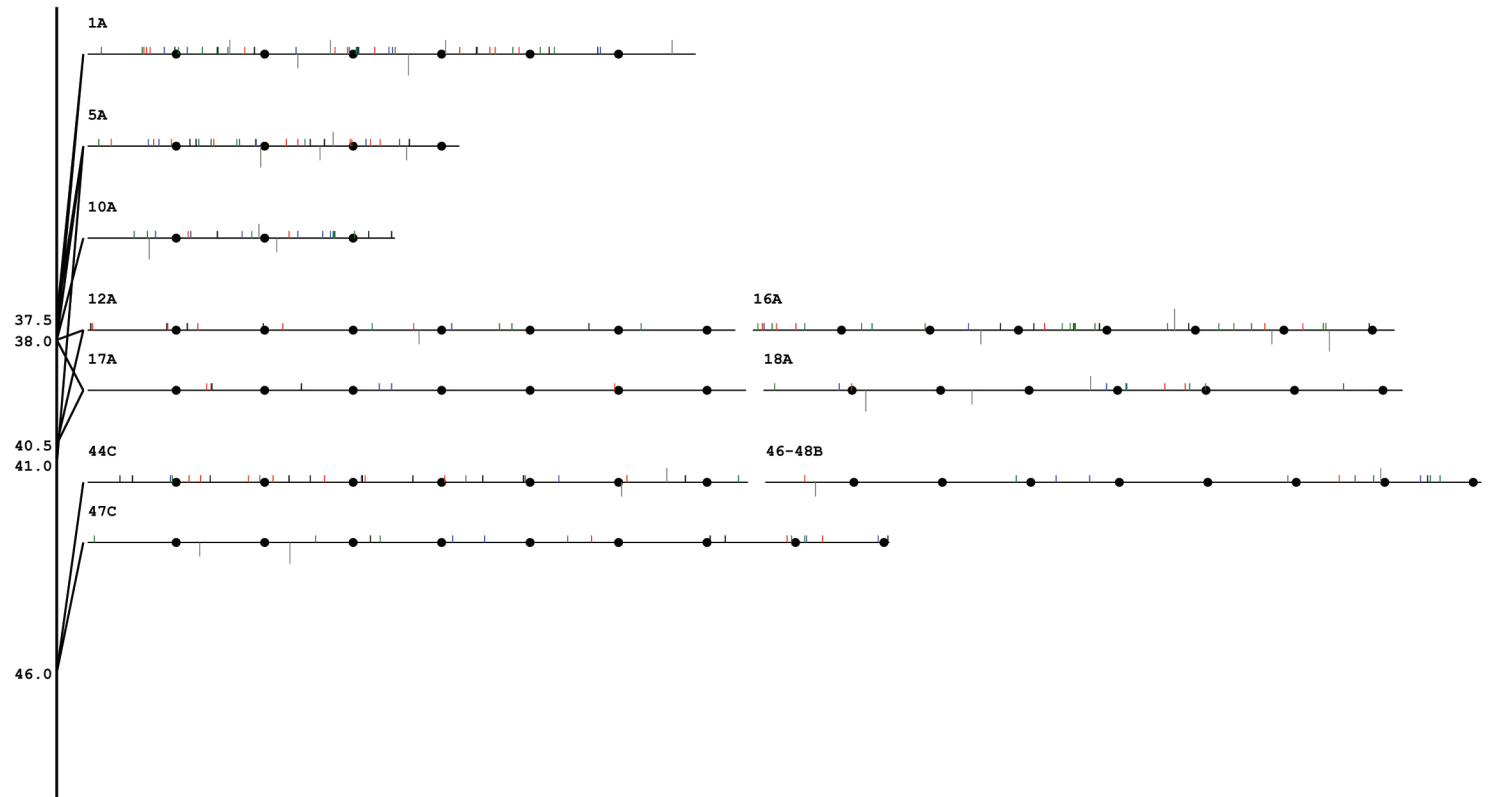


Figure S1. SNPs and InDels mapping. Polymorphisms were analysed in BAC/cosmid end-sequences anchored to BIN 1C (A), 2B (B), 4I (C), 7H (D) and 11C (E) with Seq Scape software (v 2.5). *S. pennellii* substitutions of T (red), G (black), C (blue) and A (green) are indicated by vertical bars. Grey bars above and below the line indicate <3 nt insertions and deletions, respectively. Larger grey bars above and below the line indicate >3 nt insertion and deletion, respectively. Landmarks depicted by black dots on the lines represent 100 nt. Labels above each comparative graph correspond to *S. pennellii* (number) and *S. lycopersicum* (letter) BAC/cosmid as coded in table S2A. Numbers on the left represent map positions of the *S. pennellii* chromosome fragment (according to Tomato-EXPEN 2000 map).