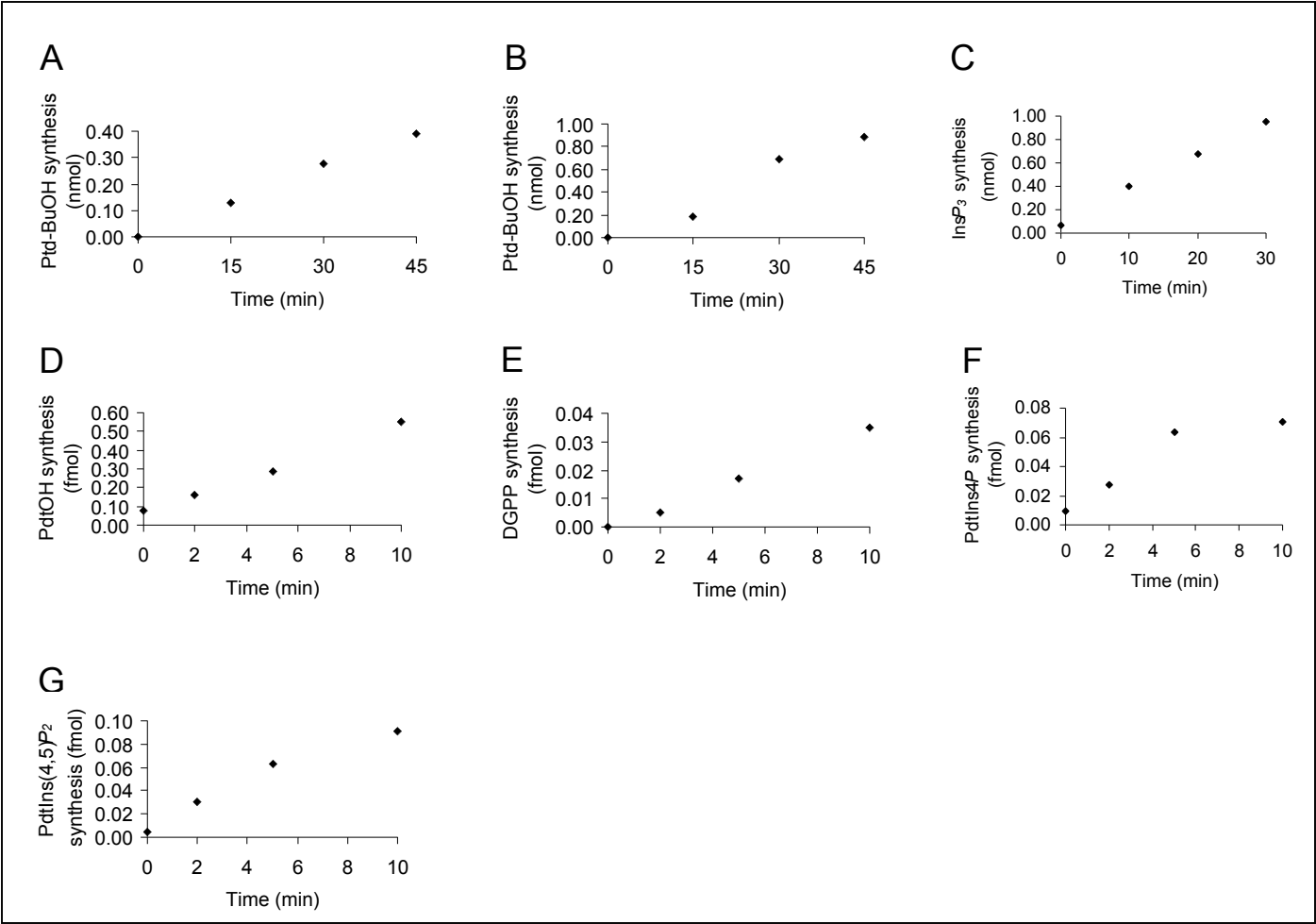
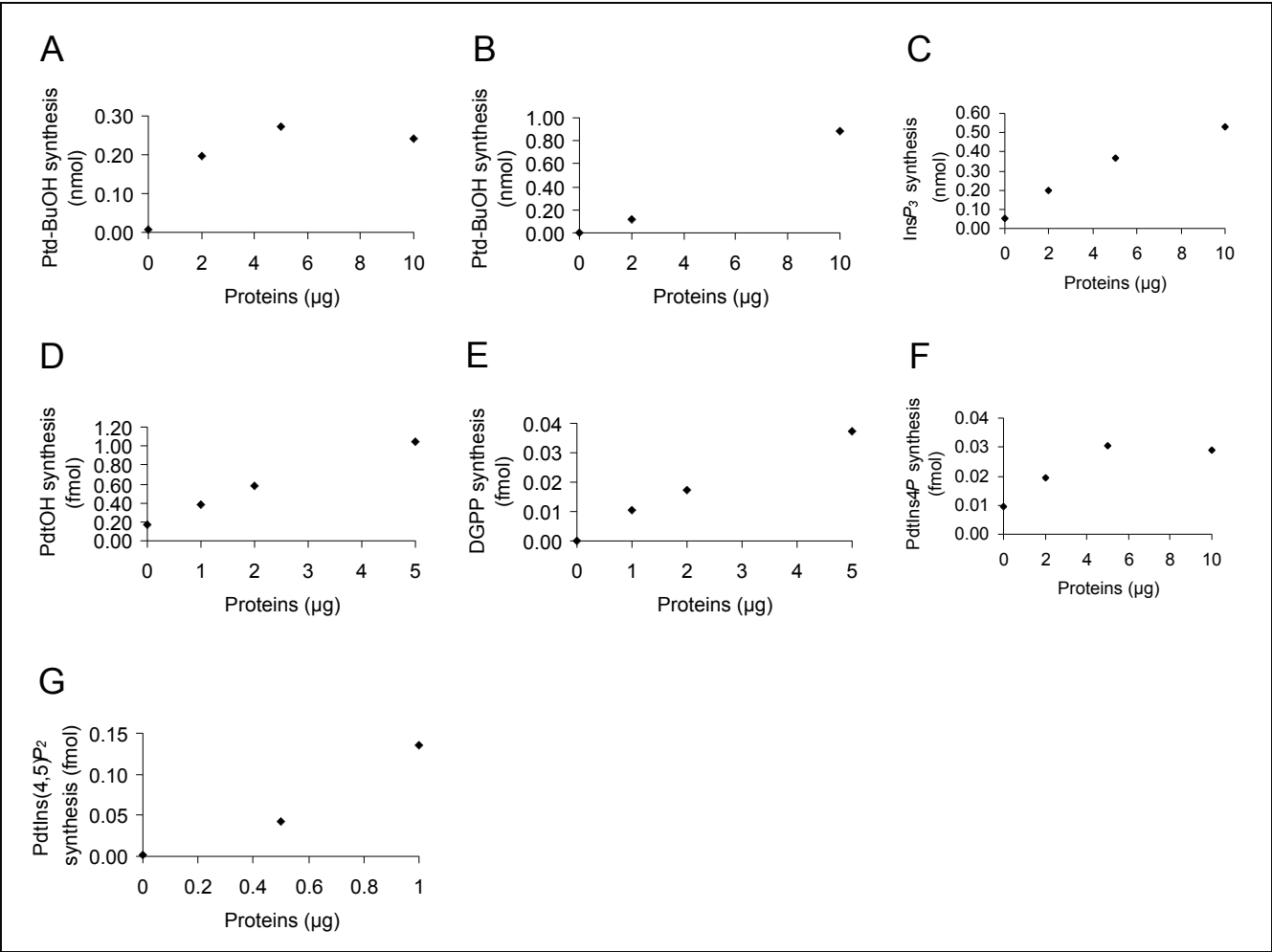


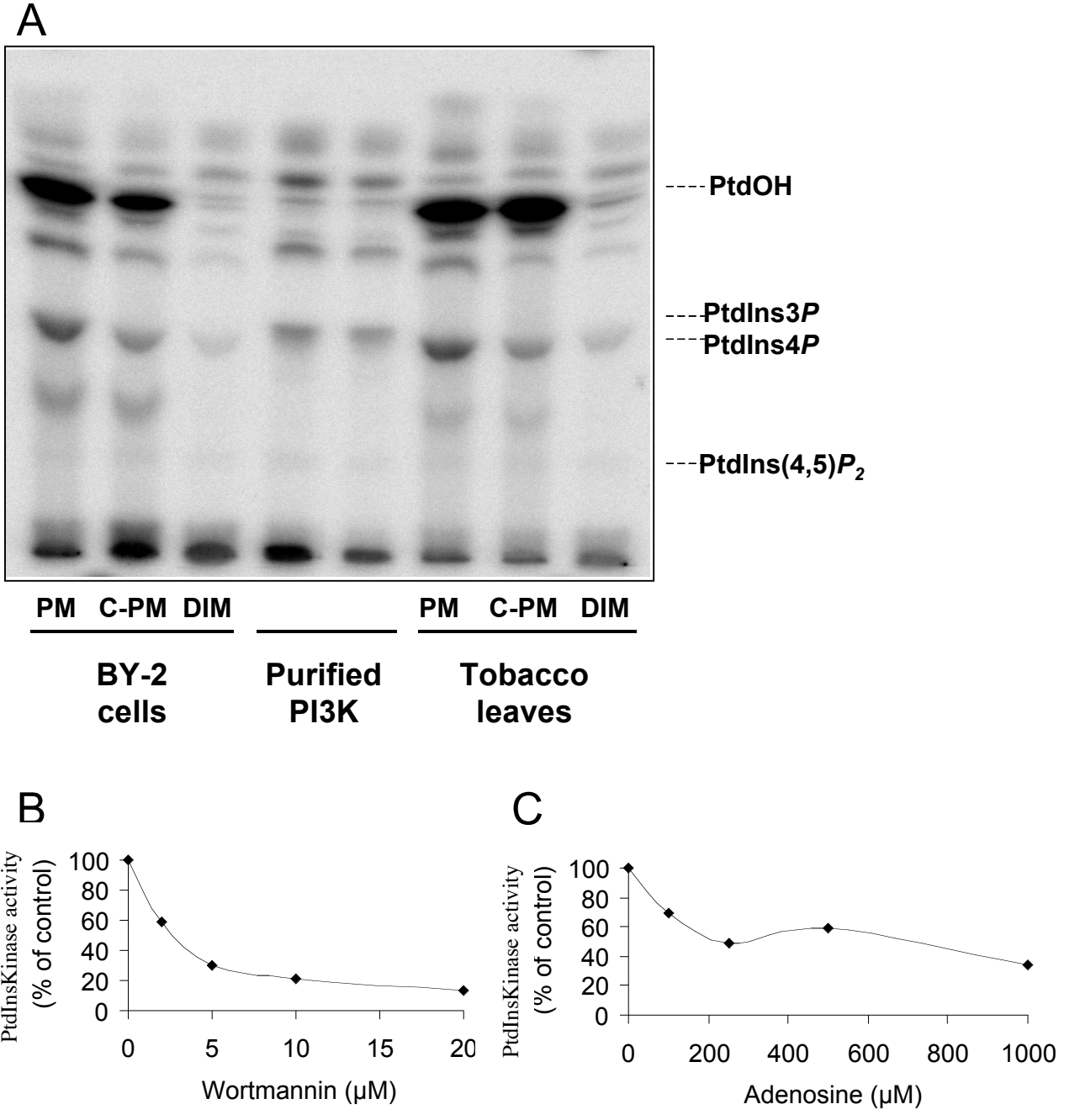
Supplemental data S1



Supplemental data S2

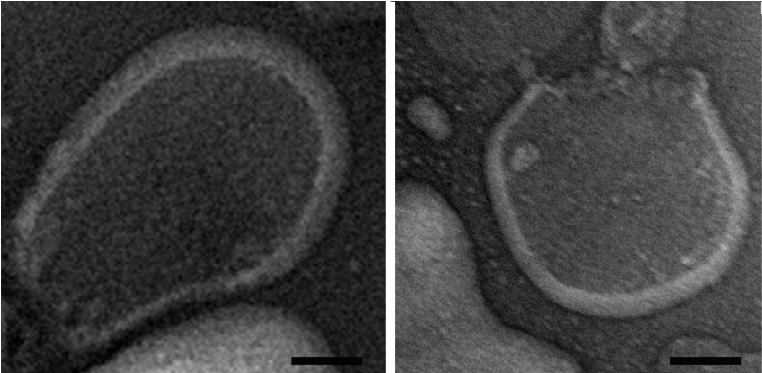


Supplemental data S3

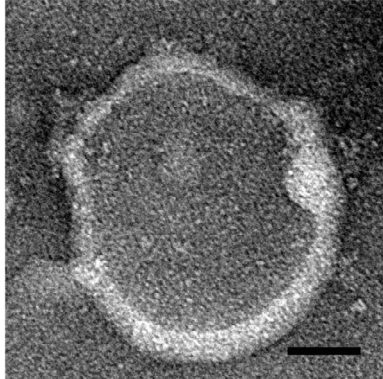


Supplemental data S4

EM controls



REM



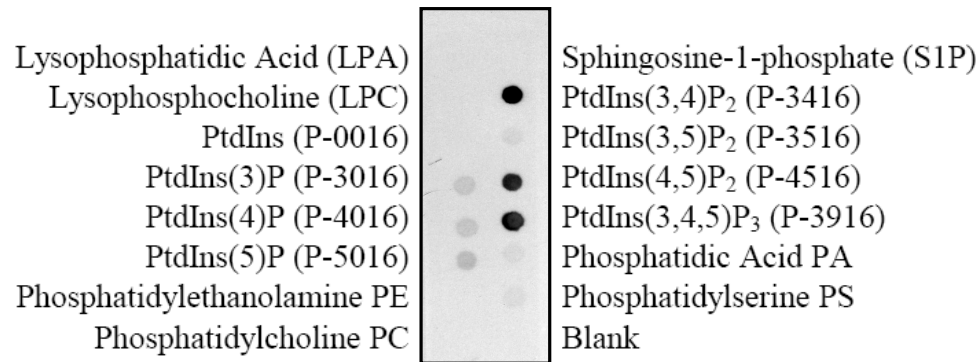
PtdIns(4, 5)P₂

Omission of the primary antibody

Supplemental data S5

« PIP strips »; test of cross reactivity toward other lipids

Monoclonal antibody to PtdIns(4,5)P₂ dilution 1/1,000 ; secondary mouse antibody 1/10,000



Negative control:

secondary mouse antibody 1/10,000 alone

