

Supporting Information

Feuerer et al. 10.1073/pnas.1002006107

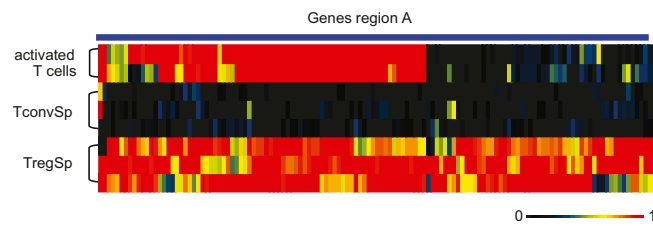


Fig. S1. "SignatureMatch" analysis of genes highlighted as region A in Fig. 1A. Raw expression values were normalized to 1 or 0 for spleen Treg and spleen Tconv, respectively, and displayed as a heat map where red represents the expression value of a gene at the same or a greater level than what was found for spleen Treg, whereas black represents the expression value of a gene that is at the same or a lower level than that of spleen Tconv. Reference groups were compared to in vitro activated CD4 T cells (1).

1. Hill JA, et al. (2007) Foxp3 transcription-factor-dependent and -independent regulation of the regulatory T cell transcriptional signature. *Immunity* 27:786–800.

