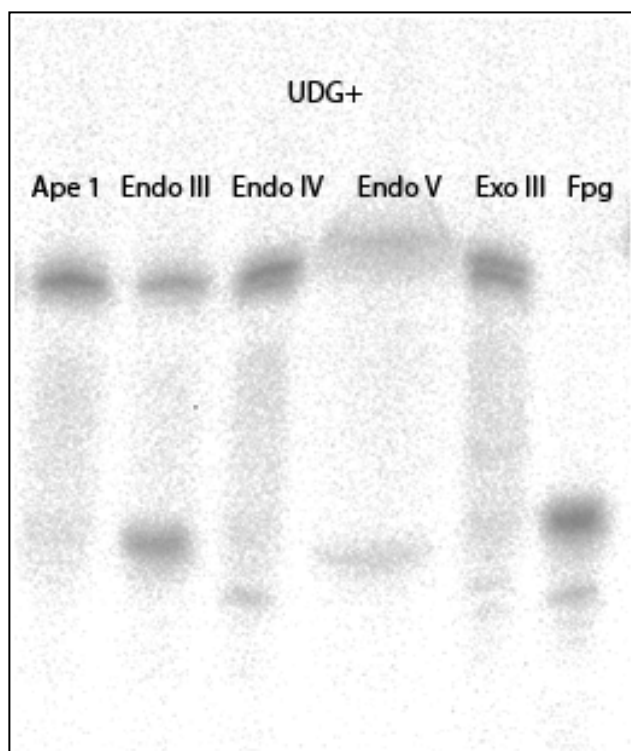


Glycosylases and AP-cleaving enzymes as a general tool for probe-directed cleavage of ssDNA targets

W. Mathias Howell*, Ida Grundberg, Marta Faryna, Ulf Landegren and Mats Nilsson

Supplementary figure 1



Supplementary figure 1. Cleavage of ssDNA substrates by UDG and AP-active enzymes. The gel image depicts single-stranded DNA molecules (containing a U) that were first treated with UDG, then split into tubes containing one of the AP-cleaving enzymes. Endo III showed some activity on ssDNA substrates, however Fpg showed near complete cleavage.