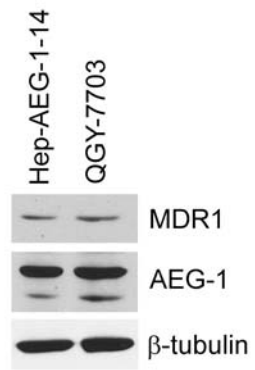
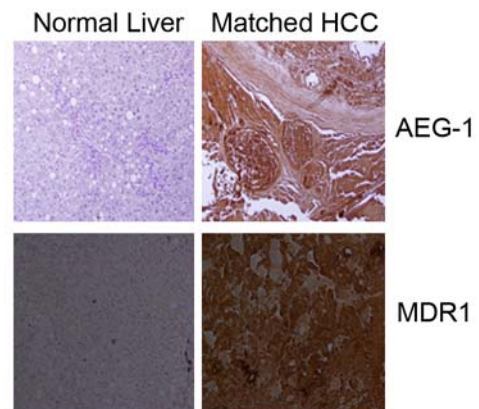
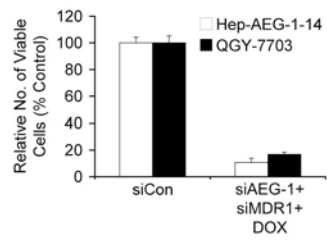


A.



B.





## Legends to Supplementary Figures

Fig. S1. MDR1 expression correlates with AEG-1 expression in human HCC cell lines and patient samples. A. Expression of MDR1, AEG-1 and  $\beta$ -tubulin was detected in Hep-AEG-1-14 and QGY-7703 cells by Western blot analysis. B. Expression of AEG-1 and MDR1 was detected by immunohistochemistry in formalin-fixed paraffin-embedded sections of normal liver and matched HCC. A representative figure from one patient is shown.

Fig. S2. Inhibition of AEG-1 and MDR1 profoundly inhibits viability of both Hep-AEG-1-14 and QGY-7703 cells. The cells were transfected with a combination of siAEG-1 and siMDR1 and treated with 3.4 nM DOX. Cell viability was analyzed 7 days post-treatment. Data represents mean  $\pm$  SEM.