

Figure S1. Orai1 expression in WT10, WT11 and HEK293 cells. Orai1 expression levels were determined by qPCR. Data are presented as % TATA-binding protein (TBP).

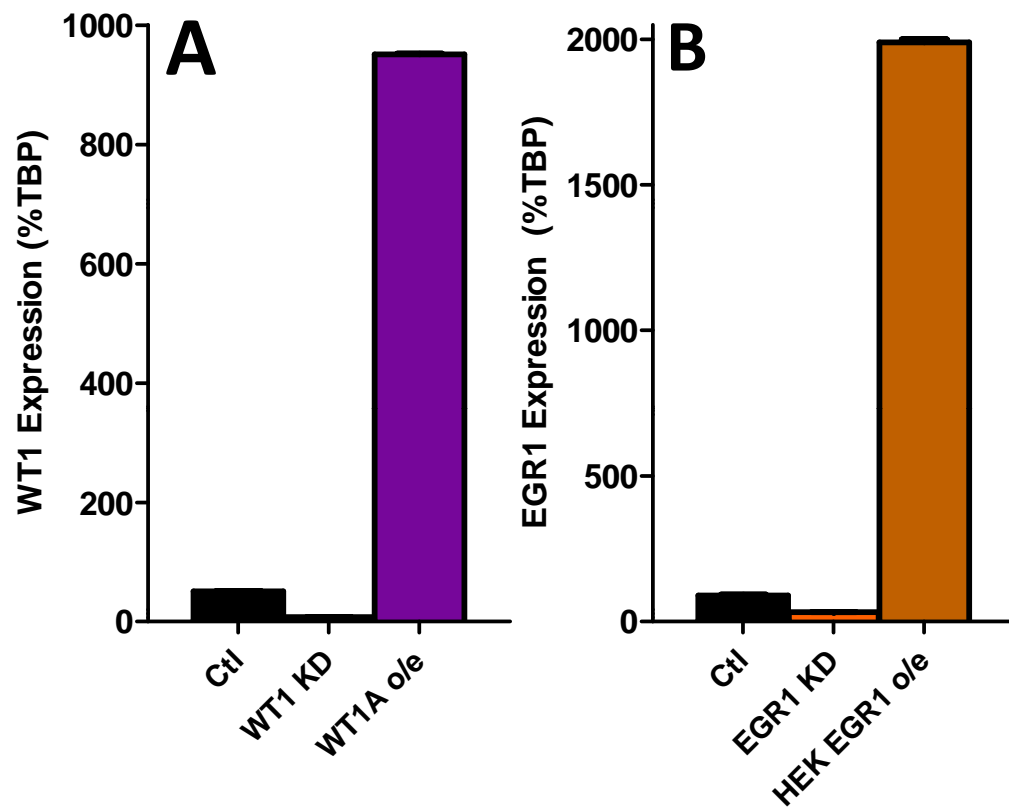


Figure S2. Manipulation of WT1 and EGR1 expression. (a) WT1 expression levels were determined in HEK293 cells by qPCR after transfection with either a WT1A expression vector or WT1 siRNA. (b) EGR1 expression levels were determined in HEK293 cells by qPCR after transfection with either an EGR1 expression vector or EGR1 siRNA. Data are presented as % TATA-binding protein (TBP).

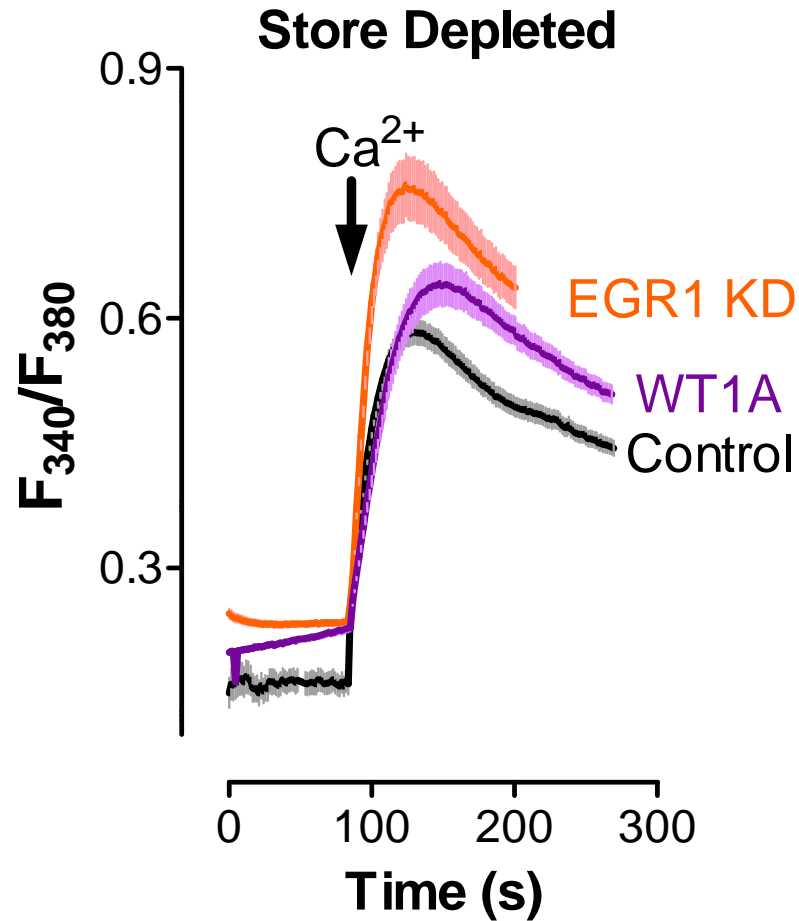


Figure S3. Manipulation of WT1 or EGR1 has no effect on store-operated Ca^{2+} entry in HEK293 cells stably expressing STIM1. HEK293 cells stably expressing STIM1 were transfected with either EGR1 siRNA or a WT1A expression vector. Store-operated Ca^{2+} entry was measured in Fura-2 loaded cells 15 minutes after depletion of Ca^{2+} stores via the addition of thapsigargin.

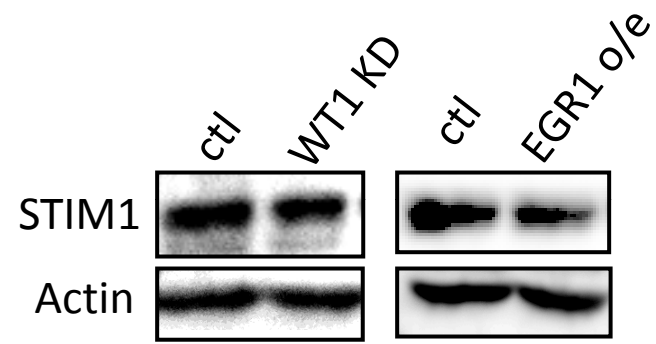


Figure S4. Analysis of STIM1 expression after WT1 knockdown or EGR1 overexpression. HEK293 cells were transfected with WT1 siRNA or an EGR1 expression vector. STIM1 and actin expression were determined by Western analysis.