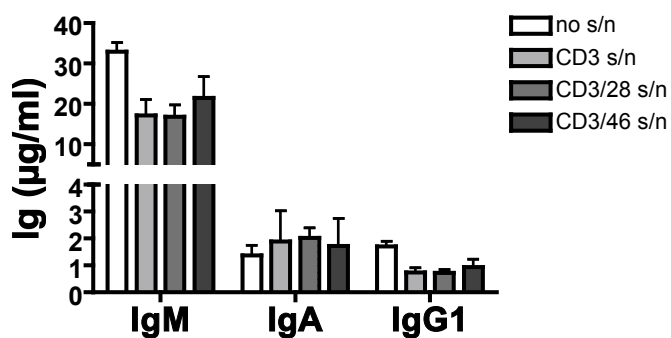
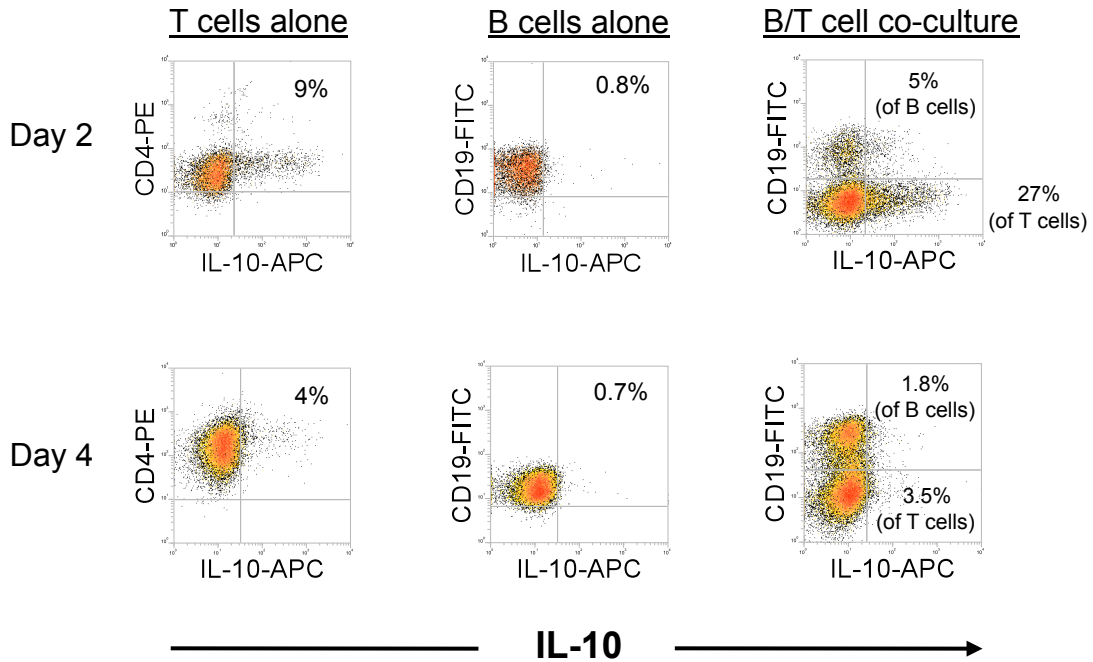


Supplementary Figure 1



Supplementary Figure 1. cTreg-derived cytokines do not affect B cell antibody secretion. (A) CD4⁺ T cells were cultured in the presence of plate-bound antibodies to CD3 or a combination of antibodies to CD3 and either CD28, or CD46. Day 3 supernatants from these CD4⁺ T cell cultures were added then to purified B cells that were stimulated through pansorbin and crosslinking antibodies to CD40. After 10 days, B cell culture supernatants were evaluated for the presence of IgM, IgA and IgG1 by ELISA. Data displayed are from triplicate wells (+/-SD) of one out of four similarly performed experiments.

Supplementary Figure 2



Supplementary Figure 2. cTregs are the major source of IL-10 in B cell/T cell co-cultures. Purified autologous irradiated CD4⁺ T cells and naïve B cells were cultured either alone or co-cultured in the presence of BCR-stimulating Abs and Abs to CD3 and CD46. IL-10 secretion by cells in the cultures was measured at days 2 and 4 post stimulation using the IL-10 Secretion Assay and subsequent FACS analysis. Shown are results from one representative of four similarly performed experiments using four different donors. Experiments performed with non-irradiated T cells gave comparable results (data not shown).