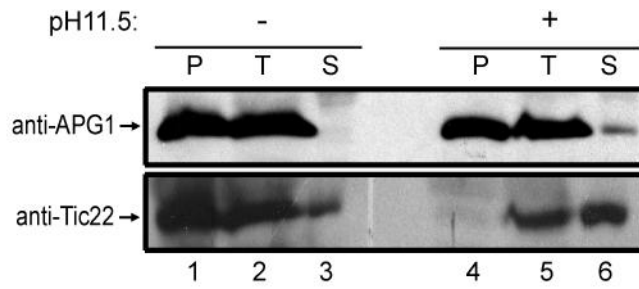


Supplemental Figure 1



Supplemental Figure 1. Controls for alkaline extraction of peripheral membrane proteins from the IEM. Isolated chloroplasts were lysed in the presence (+) or absence (-) of 0.2M Na₂CO₃, pH 11.5 and the total fraction (T) was separated into a membrane pellet (P) and soluble supernatant (S) by differential centrifugation. The samples were resolved by SDS-PAGE and immunoblotted with antisera specific for APG1 or Tic22.