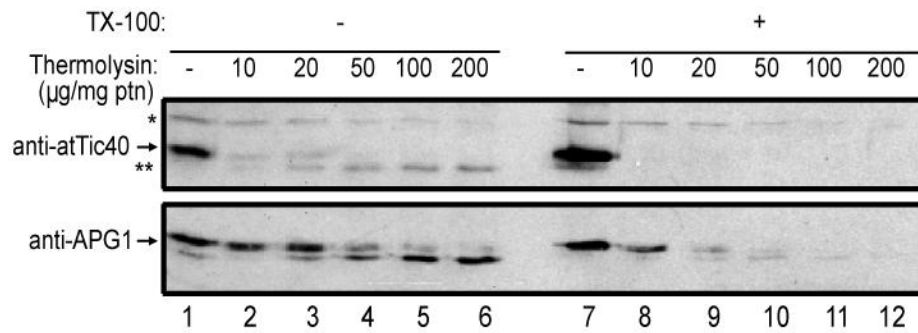


### Supplemental Figure 3



**Supplemental Figure 3.** Protease sensitivity of native atTic40 and APG1 in isolated inside-out IEM vesicles. Inside-out IEM vesicles were isolated from purified chloroplasts and samples (10 µg protein) were treated with increasing concentrations of thermolysin as indicated on ice for 30 min. The samples were resolved by SDS-PAGE and immunoblotted probed with antisera to atTic40 and APG1. The asterisk indicates an anti-atTic40 cross-reactive protein that is converted into smaller fragment (double-asterisk) during the protease treatments. TX-100 indicates the presence of 2% of triton X-100 in the proteolysis reactions.